

Start Here

Please refer to the link on your CD to the full online Reference Manual for instructions on advanced configuration options.

Estimated Completion Time: 20 minutes.

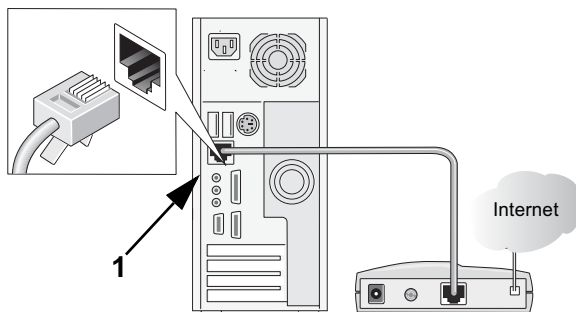
Prepare to Install Your WNR854T

- *For Cable Modem Service:* When you set up the wireless router, be sure to use the computer you first registered with your cable modem service provider.
- *For DSL Service:* You may need information such as the DSL login name and password in order to complete the wireless router setup.

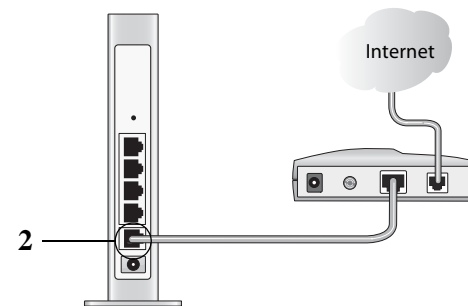
First, Connect the WNR854T

1. Connect the wireless router to your computer and modem

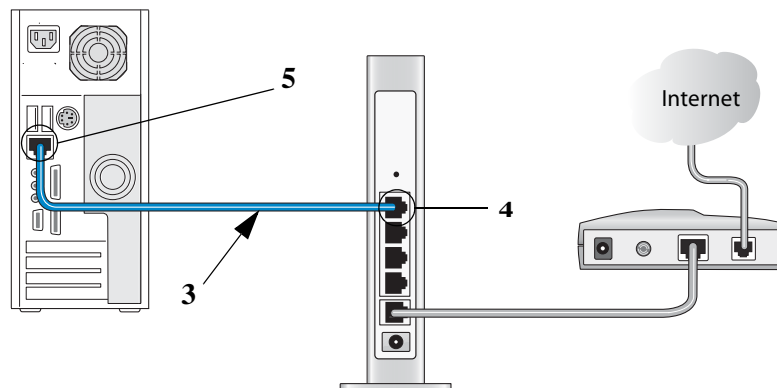
- a. Turn off *and* unplug your cable or DSL modem.
- b. Turn off your computer.
- c. At the computer end only, disconnect the Ethernet cable (point 1 in the illustration) that connects your computer to the cable or DSL modem.



- d. Securely insert the Ethernet cable from your modem into the Internet port of the wireless router (2).



- e. Next, securely insert the Ethernet cable (3) that came with your wireless router into a LAN port on the router such as LAN port 1 (4), and the other end into the Ethernet port of your computer (5).



Your network cables are now connected and you are ready to start your network.

2. Restart your network in the correct sequence

Warning: Failure to restart your network in the correct sequence could prevent you from connecting to the Internet.

- a. First, plug in and turn on the cable or DSL modem. Wait about 2 minutes.
- b. Now, plug in the power cord to your WNR854T and wait about 30 seconds.
- c. Last, turn on your computer.

Note: For DSL customers, if ISP-provided software logs you in to the Internet, *do not* run that software. You may need to go to the Internet Explorer® Tools menu, Internet Options, Connections tab page where you can select the “Never dial a connection” radio button and click Apply.

- d. According to the label on your wireless router, check the status lights and verify the following:
 - *Power:* The power light should be lit. If not, see the Troubleshooting Tips in this guide.
 - *Internet:* The Internet light should be lit. If not, make sure the Ethernet cable is securely attached to the wireless router Internet port and the powered on modem.
 - *Wireless:* The wireless light should be lit. If not, see the Troubleshooting Tips in this guide.
 - *LAN:* A LAN light should be lit.

Now, Configure the WNR854T for Internet Access and Wireless Connectivity

Configure the WNR854T for Internet access and wireless connectivity.

Configure Internet Access

1. Connect to the wireless router by typing **http://192.168.1.1** in the address field of your browser, then click **Enter**.

2. For security reasons, the router has its own user name and password.

A login window like the one shown below opens.

When prompted, enter **admin** for the router user name and **password** for the router password, both in lower case letters. The wireless router will display its home page.

3. Configure the wireless router to use the settings your Internet service provider gave you. If you cannot find these settings, contact settings your Internet service provider.

Follow the instructions in the NETGEAR wireless router online help screens or in the Setup Manual on the NETGEAR CD to complete the configuration of your wireless router for Internet access.

4. Click **Apply**, then **Test** to verify that you have Internet connectivity.



Now, Configure Wireless Connectivity

1. From the main menu on the left, click **Wireless Settings**.
2. Select the correct Country/Region setting from the drop down list so that you are sure to comply with local regulatory requirements.
3. Update the wireless security settings according to the requirements for your network.
 - The wireless security settings will depend on the kinds of wireless equipment your computers use, and how secure you want your network to be.
 - Consult the documentation for the wireless features of your computers, then use the full Reference Manual or online help screens to assist you with securing your wireless network.
4. Be sure to click **Apply** to save your settings.

Verify wireless connectivity. Connect to the the WNR854T from a computer that is configured to match the settings you just applied to your WNR854T. For wireless connectivity problems, see the Troubleshooting Tips below or in the *Setup Manual* button on the CD or the online Reference Manual which you can access via the Reference Manual button on the CD.

Troubleshooting Tips

Here are some tips for correcting simple problems you may have.

Be sure to restart your network in the correct sequence.

Always follow this sequence: 1) Unplug and turn off the modem, WNR854T, and computer; 2) plug in and turn on the modem, wait two minutes; 3) plug in the WNR854T and wait 30 seconds; 4) turn on the computer.

Make sure the Ethernet cables are securely plugged in.

- For each powered on computer connected to the wireless router with a securely plugged in Ethernet cable, the corresponding wireless router LAN port status light will be lit. The label on the bottom of the wireless router identifies the number of each LAN port.
- The Internet port status light on the wireless router will be lit if the Ethernet cable from the WNR854T to the modem is plugged in securely and the modem and wireless router are turned on.

Make sure the computer & router wireless settings match exactly.

The wireless security settings of your computer must match exactly those you configured in the WNR854T, such as the Wireless Network Name (SSID) and the security settings (WEP or WPA).

Make sure the network settings of the computer are correct.

- LAN and wirelessly connected computers *must* be configured to obtain an IP address automatically via DHCP.
- Some cable modem ISPs require you to use the MAC address of the computer registered on the account. If so, in the Router MAC Address section of the Basic Settings menu, select, "Use this Computer's MAC Address." The router will then capture and use the MAC address of the computer that you are now using. You must be using the computer that is registered with the ISP. Click **Apply** to save your settings. Restart the network in the correct sequence.

Check the router status lights to verify correct router operation.

- If the Power light does not turn solid green within 2 minutes after turning the router on, reset the router according to the instructions in the *Setup Manual* on the CD.
- If the Wireless light does not come on, verify that the wireless feature is turned on according to the instructions in the *Setup Manual* on the CD.

Technical Support

Thank you for selecting NETGEAR products.

To register your product, go to: <http://www.NETGEAR.com/register>

Go to <http://www.NETGEAR.com/support> for support information.



201-10849-01

March 2006



This symbol was placed in accordance with the European Union Directive 2002/96 on the Waste Electrical and Electronic Equipment (the WEEE Directive). If disposed of within the European Union, this product should be treated and recycled in accordance with the laws of your jurisdiction implementing the WEEE Directive.

© 2006 by NETGEAR, Inc. All rights reserved. NETGEAR is a registered trademark of NETGEAR, Inc. in the United States and/or other countries. Other brand and product names are trademarks or registered trademarks of their respective holders. Information is subject to change without notice.