



NETGEAR®

54 Mbps Wireless Router WGR614 v3

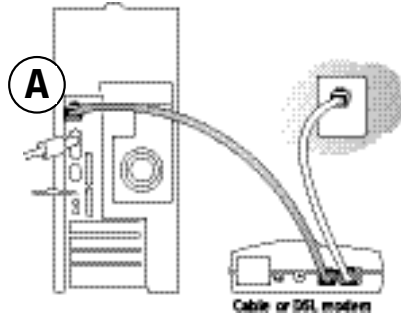
Installation Guide

Follow these quick steps to install your router.

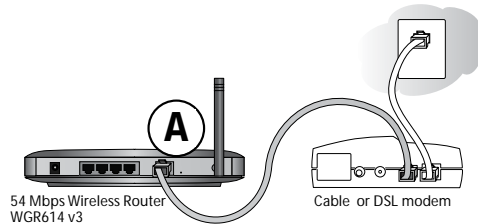
Before you begin, locate the broadband Internet configuration settings from your cable company. You can also consult the Install Assistant on the *Resource CD for 54 Mbps Wireless Router*.

1 Connect the Router

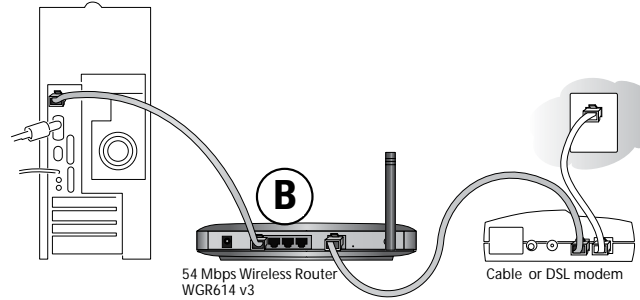
- Turn off your computer and cable or DSL modem.
- Disconnect the Ethernet cable from your computer (A) which connects to your cable or DSL modem.



- Connect the Ethernet cable from your cable or DSL modem to the Internet port (A) on the WGR614 v3.



- Connect the Ethernet cable which came with the router from a Local port on the router (B) to your computer.



- Turn on the cable or DSL modem and wait about 30 seconds for the lights to stop blinking.
- Now, turn on your computer. If software usually logs you in to your Internet connection, do not run that software or cancel it if it starts automatically.
- Verify the following:

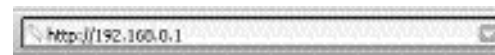
- When you turn the router on, the power light goes on.
- The local lights are lit for any connected computers.
- The Internet light is lit, indicating a link has been established to the cable or DSL modem.

Note: For wireless placement and range guidelines, and wireless configuration instructions, please see the *Reference Manual* on the *Resource CD for 54 Mbps Wireless Router*.

2 Log In to the Router

Note: To connect to the router, your computer needs to be configured to obtain an IP address automatically via DHCP. For instructions on how to do this, please see Appendix C in the *Reference Manual* on the *Resource CD for 54 Mbps Wireless Router*.

- Connect to the router by typing `http://192.168.0.1` in the address field of Internet Explorer or Netscape® Navigator.

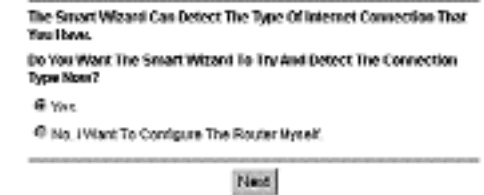


- For security reasons, the router has its own user name and password. When prompted, enter **admin** for the router user name and **password** for the router password, both in lower case letters.

Note: The user name and password are not the same as any user name or password you may use to log in to the Internet.

3 Connect to the Internet

Smart Wizard



- You are now connected to the router. If you do not see the menu above, click the Smart Wizard link on the upper left of the main menu.
- Click Next to follow the steps in the Smart Wizard to input the router configuration settings. See the green ISP Guide for help with identifying your ISP settings.
- At the end of the Smart Wizard, click the Test button to verify your Internet connection and register your product.

Note: If you were unable to connect to the router, please refer to “Basic Functioning” in the “Troubleshooting” chapter of the *Reference Manual* on the *Resource CD for 54 Mbps Wireless Router*.

Technical Support

PLEASE REFER TO THE SUPPORT INFORMATION CARD THAT SHIPPED WITH YOUR PRODUCT.

By registering your product at www.NETGEAR.com/register, we can provide you with faster expert technical support and timely notices of product and software upgrades.

NETGEAR, INC.

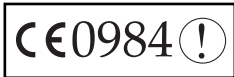
Support Information

Phone: 1-888-NETGEAR (For US & Canada only) - 24 x 7 phone support

See Support information card for other countries.

E-mail: support@NETGEAR.com (24 x 7 online support)

www.NETGEAR.com



Attention: When you configure the wireless settings of this device please make sure to select the correct country settings. Due to EU-law th country settings must be identical to the country where the device is operating (important due to non-harmonized frequencies in the EU).

802.11b Restrictions: European standards dictate minimum radiated transmit power of 100 mW EIRP and frequency range of 2.400 - 2.4835 GHz. In France, the equipment must be restricted to the 2.4465 - 2.4835 GHz frequency range and must be restricted to indoor use.

©2003 NETGEAR, Inc. NETGEAR, the Netgear logo, The Gear Guy and Everybody's Connecting are trademarks or registered trademarks of Netgear, Inc. in the United States and/or other countries. Microsoft and Windows are registered trademarks of Microsoft Corporation in the United States and/or other countries. Other brand and product names are trademarks or registered trademarks of their respective holders. Information is subject to change without notice. All rights reserved.



October 2003