



NETGEAR®

54 Mbps Wireless PCI Adapter WG311 v2

Installation Guide

Follow these quick steps to install your WG311 PCI Adapter.

The basic installation and configuration instructions below assume that your wireless network connection will be to an access point, and you are not using WEP security. Please refer to the *Reference Manual* on the *WG311 54 Mbps Wireless PCI Adapter Resource CD* for detailed instructions on configuring WEP, using Ad-Hoc mode, or using advanced options.

Windows XP Basic Installation

1 First, install the WG311 software.

- Power on your desktop and log into the Windows Operating System
- Insert the *WG311 54 Mbps Wireless PCI Adapter Resource CD* into your CD-ROM drive. The CD main page shown below will load.




- Click the **Install Driver & Utility** link.
- Follow the InstallShield Wizard steps, and click **Finish** when done.

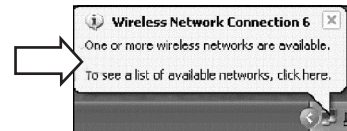
2 Next, install the WG311 Wireless PCI Adapter.

- Shut down the PC and remove the power cord from the PC. Insert the WG311 Wireless PCI Adapter into an available PCI slot. Connect the antenna to the adapter and position the antenna to the up position. Reconnect the power cord and reboot the computer.
- After a short delay, the Found New Hardware Wizard displays.

Note: If a Windows XP logo testing warning appears, click **Continue Anyway** to proceed.

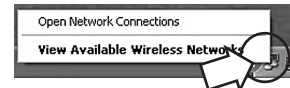
When the installation is complete, you will see the WG311 system tray icon  on the lower right portion of the Windows task bar.

Windows XP will display a Wireless Network Connection message like this one.



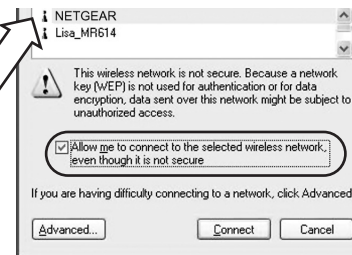
3 Now, configure your WG311

- Right click on the network icon in the Windows XP system tray to open the network options menu.



- Click on the **View**


If there is more than one wireless network in your vicinity, click on the one to which you will connect.



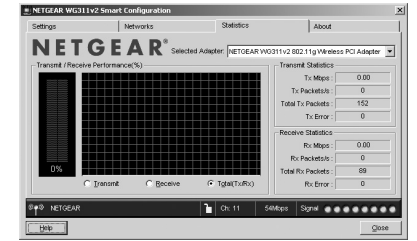
Available Wireless Networks menu item.

- Click on the **Allow me to connect to the selected wireless network even though this is not secure** check box.
- Click **Connect**.

4 Finally, verify wireless network connectivity.

- Open the WG311 utility by clicking on the icon  in the Windows system tray.

Note: When the Windows XP wireless configuration utility is enabled, only the first two tab pages of the Netgear Smart Wireless Settings utility will appear.



To see the full NETGEAR utility, please refer to the *Reference Manual* on the *54 Mbps Wireless PCI Adapter WG311 Resource CD*.

- Verify that your connection information matches your wireless network.
- Verify connectivity to the Internet or network resources.

Note: If you are unable to connect, see the troubleshooting tips in the Basic Installation section of the *Reference Manual* on the *WG311 54 Mbps Wireless PCI Adapter Resource CD*.

Windows 2000, Me/98SE Basic Installation

1 First, install the WG311 software.

- Power on your desktop PC and log into the Windows Operating System.
- Insert the *WG311 54 Mbps Wireless PCI Adapter Resource CD* for the WG311 into your CD-ROM drive. The CD main page shown below will load.




- Click the **Install Driver & Utility** link.
- Follow the InstallShield Wizard steps, and click **Finish** when done.


2 Next, install the WG311 Wireless PCI Adapter.

- Shut down the PC and remove its power cord. Insert the WG311 Wireless PCI Adapter into an available PCI slot. Reconnect the power cord and reboot the computer.
- After a short delay, the Found New Hardware Wizard displays.

Note: If a Windows 2000 displays a Digital Signature Not Found warning, click **Yes** to continue the installation.

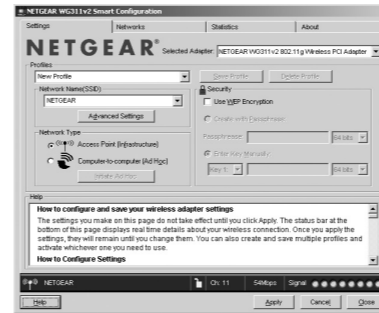
When the installation is complete, you will see the WG311 system tray icon  on the lower right right portion of the Windows task bar.

3 Now, configure your WG311

- Open the WG311 Smart Wireless Settings Utility by clicking on the icon  the Windows system tray. The utility opens to the Settings page.

- Change the Network Name SSID to match your network.

Tip: As an alternative to typing in the SSID, you can use the Network tab to view the available wireless networks, and double click on the desired network.



- Click **Apply** to activate the connection.
- You can also enter a profile name and click on the **Save Profile** button to store current settings.

4 Finally, verify wireless network connectivity.

Note: You can also use the Networks tab to verify the availability of wireless networks and their SSIDs. Please see the *Reference Manual* on the *54 Mbps Wireless PCI Card WG311 Resource CD*.

- Verify that your connection information matches your wireless network.
- Verify connectivity to the Internet or network resources.

Note: If you are unable to connect, see troubleshooting tips in the Basic Installation section of the *Reference Manual* on the *WG311 54 Mbps Wireless PCI Adapter Resource CD*.

Technical Support

PLEASE REFER TO THE SUPPORT INFORMATION CARD THAT SHIPPED WITH YOUR PRODUCT.

By registering your product at www.NETGEAR.com/register, we can provide you with faster expert technical support and timely notices of product and software upgrades.

NETGEAR, INC.

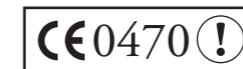
Support Information

Phone: 1-888-NETGEAR (For US & Canada only) - 24 x 7 phone support

See Support information card for other countries.

E-mail: support@NETGEAR.com (24 x 7 online support)

www.NETGEAR.com



Attention: This device may be used throughout the European community. Some restrictions may apply in France and Italy.



2 0 1 - 1 0 0 5 6 - 0 1

December 2003

©2003 NETGEAR, Inc. NETGEAR, the Netgear logo, The Gear Guy, Everybody's connecting, and Auto Uplink are trademarks or registered trademarks of Netgear in the United States and/or other countries. Other brand and product names are trademarks or registered trademarks of their respective holder. Information is subject to change without notice. All rights reserved.