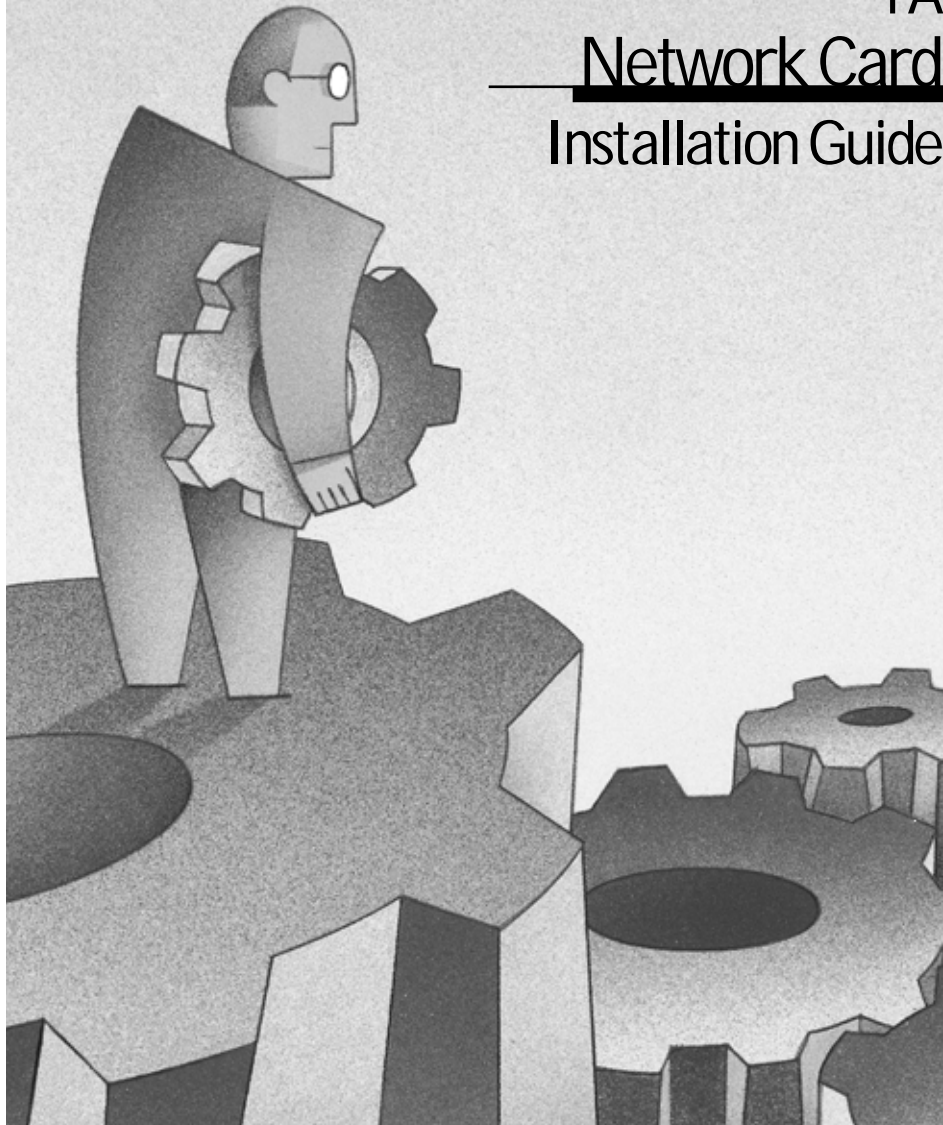


# NETGEAR

MODEL FA 410TX

## Network Card Installation Guide





## Start Here

Instructions in this guide are for users of Windows® 95 who are installing the Model FA410TX Network Card. For instructions on installing and verifying the Windows 95 network driver, refer to “Install the Windows 95 Network Driver” on the other side of this guide.

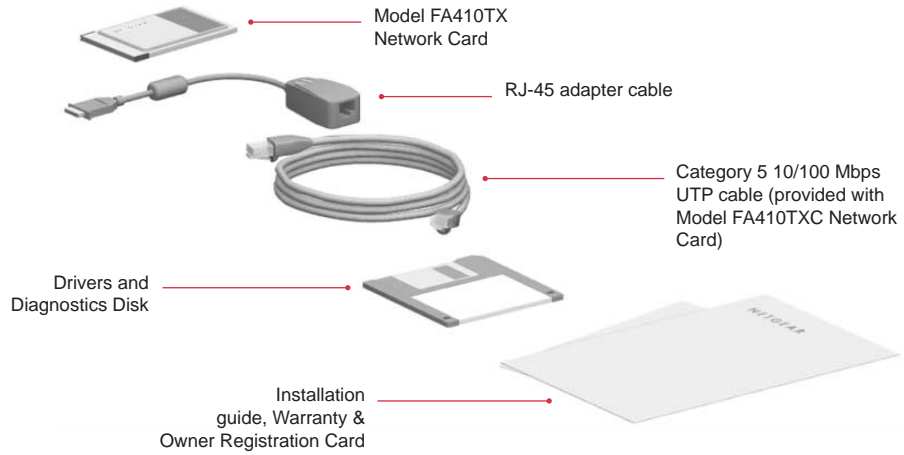
These three easy steps provide information for installing your Model FA410TX Network Card:

1. Verify Package Contents
2. Install the Network Card
3. Connect the Network Cables

As a last step, be sure to fill out and send in your warranty card.

# Verify Package Contents

Unpack the contents of the package and make sure that you have everything.



8085FA

## Verify PC Requirements

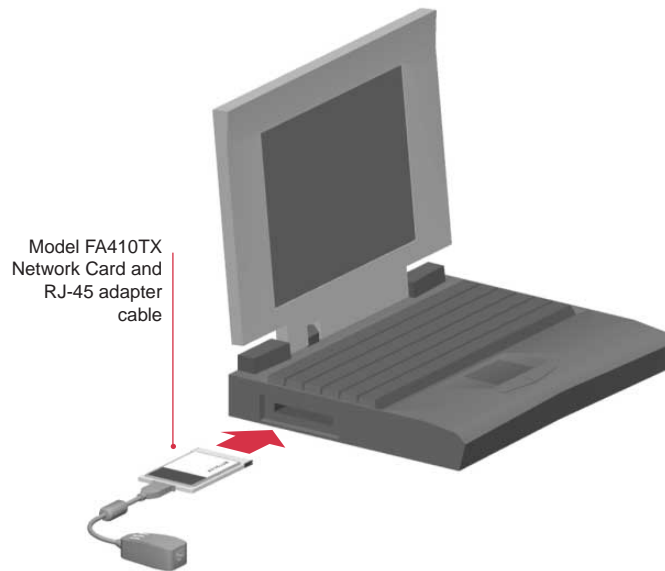
The instructions given in this guide are for using the NETGEAR™ Model FA410TX Network Card in a PC that has a Microsoft® Windows 95 operating system.

## 2

## Install the Network Card

The Model FA410TX Network Card is hot swappable, which means it can be inserted into a PC that is either turned off or powered on.

- 1. Insert the Model FA410TX Network Card into the PCI slot as illustrated in the figure.**  
Some PCs have two PCI slots. The Model FA410TX Network Card can be inserted into either slot.
- 2. Insert the RJ-45 adapter cable into the connector on the edge of the network card.**
- 3. Turn on the power to the PC, if you have chosen to install the card with the power turned off.**



8086FA

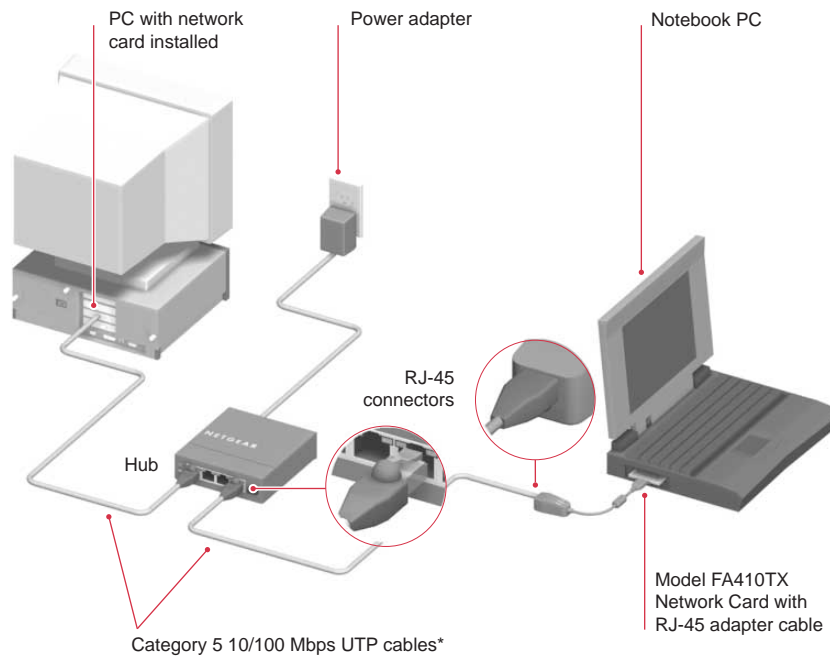
### 3

## Connect the Network Cables

Using the UTP cable that is supplied, connect any port on the hub to the port on the network card.



Note: One of the ports on NETGEAR hubs is switchable between Normal (MDI-X) and Uplink (MDI) with a Normal/Uplink push button. If you are using this switchable port on a NETGEAR hub to connect to a PC or the network card, make sure the Normal/Uplink push button is set to Normal.



\*Use the cable provided or any Category 5 UTP cable.  
Maximum length = 100 meters (300 feet)



## Technical Specifications

Model FA410TX Network Card	
<b>Standards Compatibility</b>	NetWare tested and approved Microsoft Windows, Windows 95, Windows NT <sup>®</sup> compatible IEEE 802.3i, 10BASE-T Ethernet IEEE 802.3u 100BASE-TX Fast Ethernet
<b>Interface Options</b>	RJ-45 connector
<b>IRQ Options</b>	Assigned by Plug-and-Play system
<b>Power Consumption</b>	2.0 W
<b>Physical Specifications</b>	
Dimensions	3.37 by 2.13 in. 8.56 by 5.40 cm
Weight	0.14 lb (63 g)
<b>Environmental Specifications</b>	
Operating temperature	0° to 45° C
Operating humidity	10% to 90% noncondensing
<b>Agency Compliance</b>	CE mark, commercial
	FCC, Part 15, Class B
	EN 55 022 (CISPR 22), Class B
	Canada ICES-003, Class B



## Install the Network Driver

This guide provides you with instructions for installing the Windows 95 Network Driver. All versions of Windows 95 might not respond with the same screens. Therefore, windows that are different than those shown in these instructions might open but prompt you for the same information, and windows might open in a different order than the order of the steps in these instructions.



Note: You must install the network card (instructions on other side of this guide) before installing the network driver.

Before you proceed with the installation steps, decide on a name for your network and for each PC (each name must be only one word). You also need to have the Windows 95 CD-ROM and the FA410TX Drivers and Diagnostics Disk ready to use in the installation process.

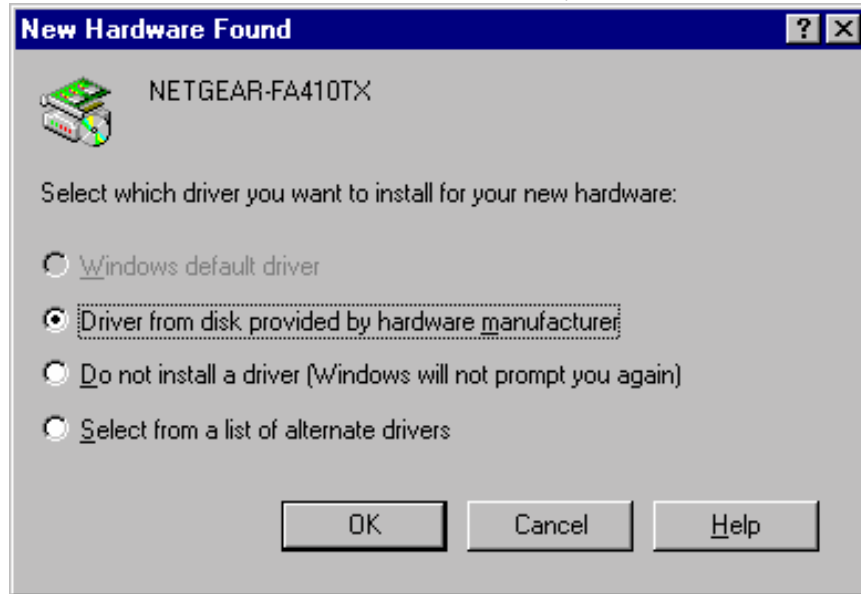


Note: If the "Insert Disk" window opens and the "Please insert the disk labeled Windows 95..." message appears at any time during the installation process, insert the Windows 95 CD-ROM in Drive D (the CD-ROM drive) and click on "OK." Then follow the next step in the instructions.

If you do not have a CD-ROM drive and are using the Windows 95 floppy disks, insert the requested Windows 95 floppy disk in Drive A, click on "OK," and then follow the next step in the instructions.

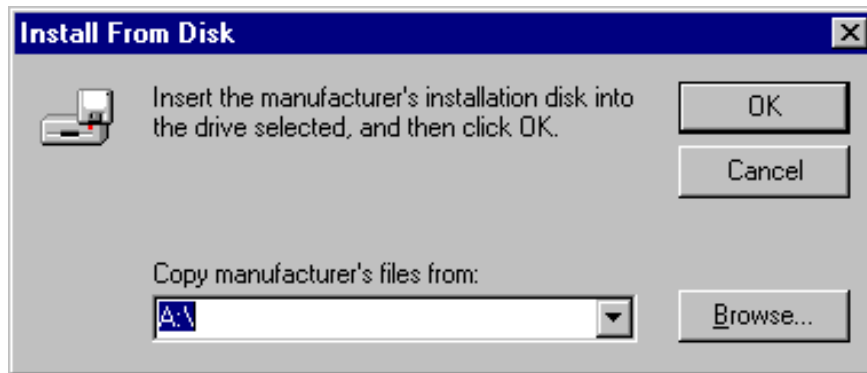
1. Turn on power to the computer and start Windows 95.

The new hardware is found, and the driver is automatically loaded.



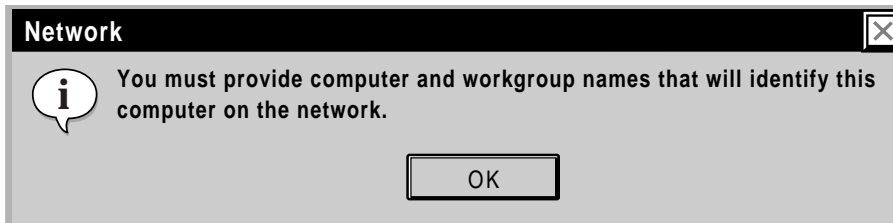
Select “Driver from disk provided by hardware manufacturer;” and then click on “OK.”

- 2.



Make sure Drive A is designated on the prompt line (for example, A:) when the “Copy manufacturer’s files from...” message is displayed. Click on “OK.”

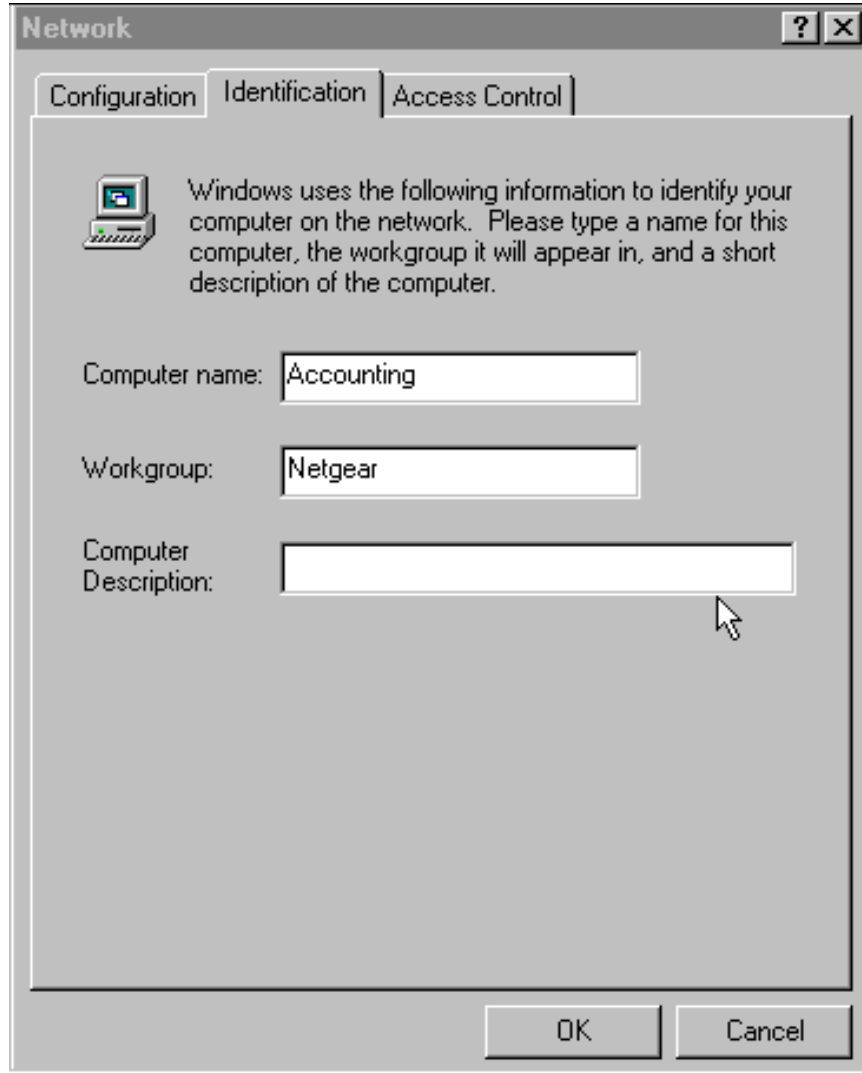
- 3.



Click on “OK.”



4.



Enter a name (different for each computer) in the “Computer name” entry field, enter a workgroup name (the name of your entire network) in the “Workgroup” entry field, and click on “OK” or “Close.” (If you have previously named your computer and network, the options on the window may vary slightly and could be either “OK” or “Close.”)

5.



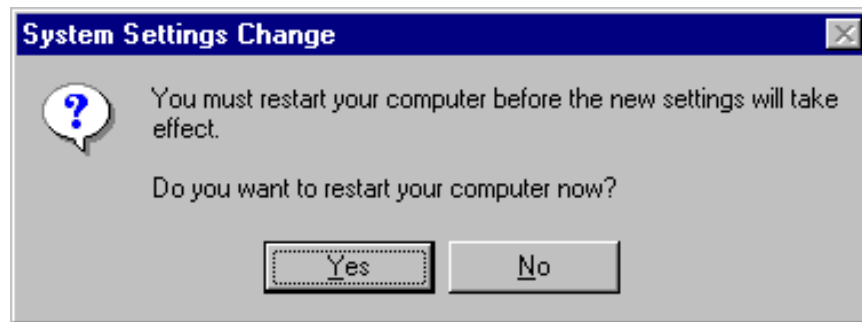
Insert the Windows 95 CD-ROM and click on “OK.”

6.



Make sure Drive D and win95 are designated on the “Copy files from” prompt line (example, D:\win95), and then click on “OK.”

7.

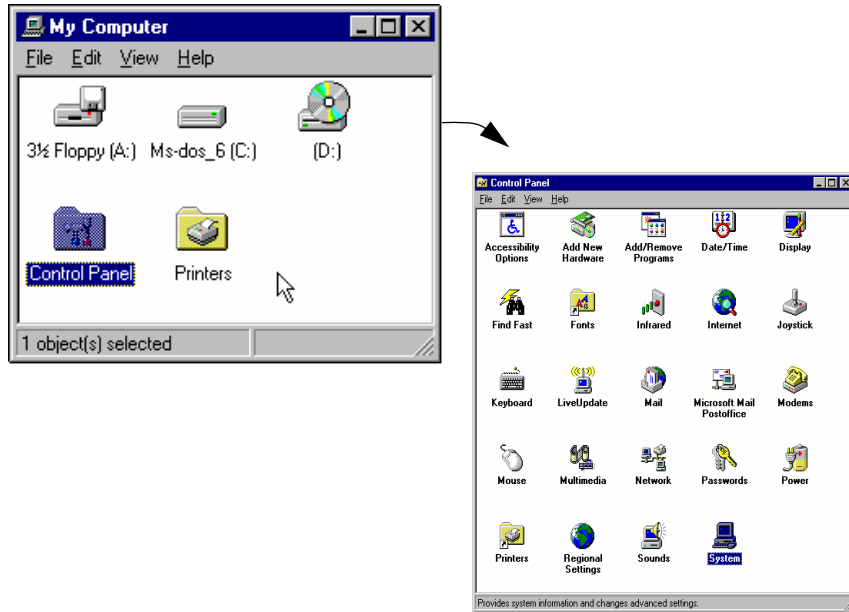


Remove the Drivers and Diagnostics Disk from the floppy drive, remove the Windows 95 CD-ROM from the CD drive, and then click on “Yes.”

8. Proceed to “Verify Installation.”

# ▶ Verify Installation

1.



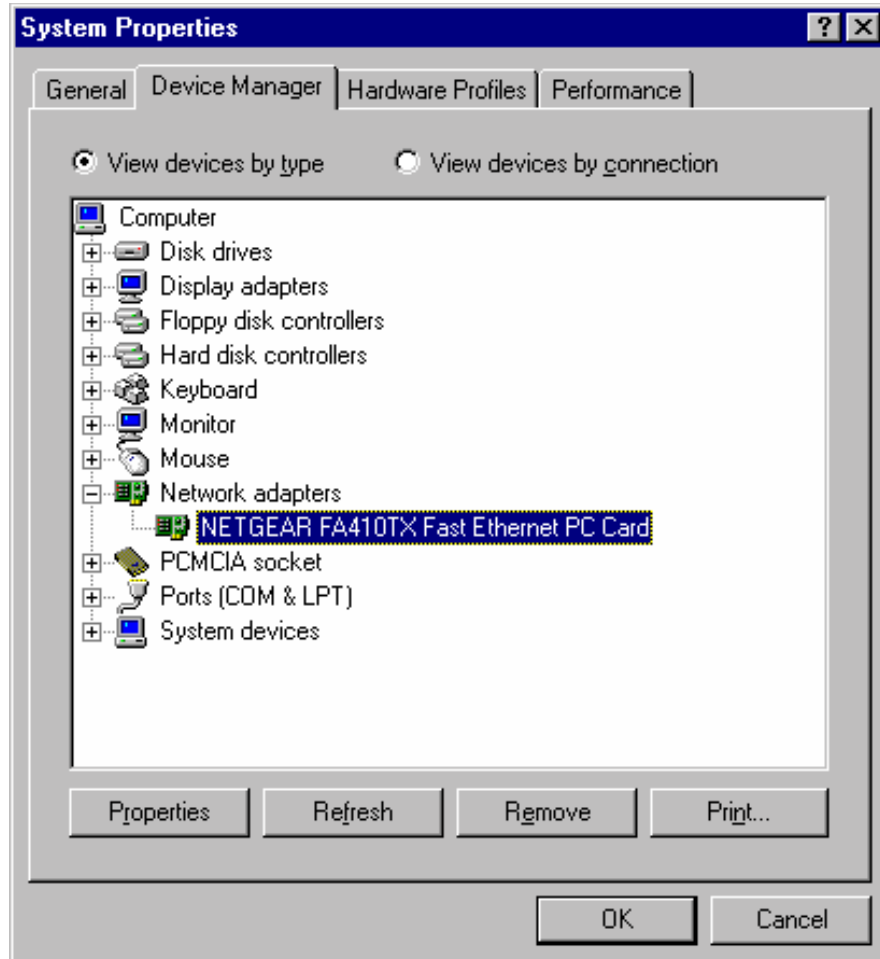
Double-click on “My Computer” on the desktop, double-click on “Control Panel,” and then double-click on “System.”

2.



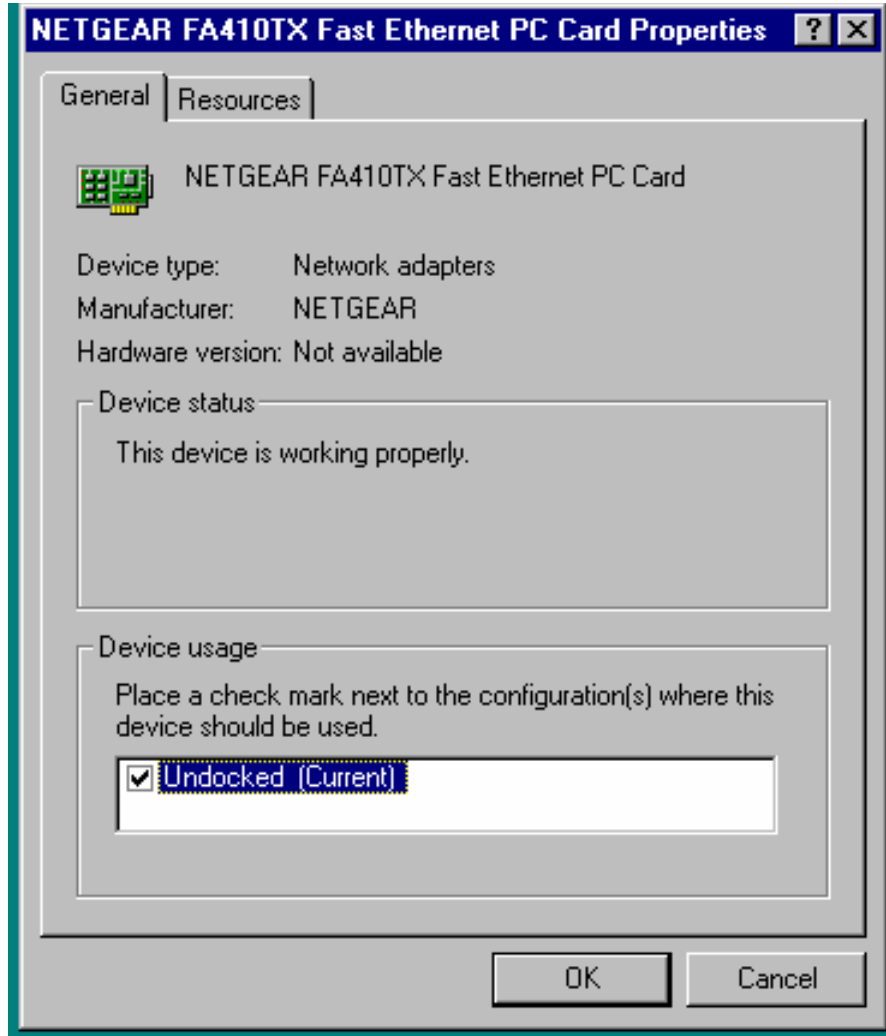
Click on “Device Manager.”

3.



Double-click on “Network adapters,” and then double-click on “NETGEAR FA410TX Fast Ethernet....”

4.



Double-click on “NETGEAR FA410TX Fast Ethernet PC Card” to display a message regarding the status of the device.

If there is a problem with the installation of the driver, an exclamation point appears next to “NETGEAR FA410TX Fast Ethernet PC Card.”

Continue to click on “OK” or click on the “X” in the right hand corner to close any open windows and return to the Windows 95 desktop.

Restart your PC by selecting “Shut- Down” from the Windows 95 startup menu and then selecting “Restart the computer.”

© 2000 by NETGEAR, Inc. All rights reserved.

### Trademarks

NETGEAR™ is a trademark of NETGEAR, INC. WindowsR is a registered trademark of Microsoft Corporation. Other brand and product names are trademarks or registered trademarks of their respective holders. Information is subject to change without notice. All rights reserved.

### Statement of Conditions

In the interest of improving internal design, operational function, and/or reliability, NETGEAR reserves the right to make changes to the products described in this document without notice.

NETGEAR does not assume any liability that may occur due to the use or application of the product(s) or circuit layout(s) described herein.

### Certificate of the Manufacturer/Importer

It is hereby certified that the Model FA410TX Network Card has been suppressed in accordance with the conditions set out in the BMPT-AmtsblVfg 243/1991 and Vfg 46/1992. The operation of some equipment (for example, test transmitters) in accordance with the regulations may, however, be subject to certain restrictions. Please refer to the notes in the operating instructions.

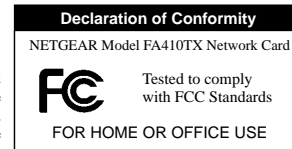
Federal Office for Telecommunications Approvals has been notified of the placing of this equipment on the market and has been granted the right to test the series for compliance with the regulations.

### Federal Communications Commission (FCC) Compliance Notice: Radio Frequency Notice

This device complies with part 15 of the FCC Rules. Operation is subject to the following two conditions:

1. This device may not cause harmful interference.
2. This device must accept any interference received, including interference that may cause undesired operation.

Note: This equipment has been tested and found to comply with the limits for a Class B digital device, pursuant to part 15 of the FCC Rules. These limits are designed to provide reasonable protection against harmful interference in a residential installation. This equipment generates, uses, and can radiate radio frequency energy and, if not installed and used in accordance with the instructions, may cause harmful interference to radio communications. However, there is no guarantee that interference will not occur in a particular installation. If this equipment does cause harmful interference to radio or television reception, which can be determined by turning the equipment off and on, the user is encouraged to try to correct the interference by one or more of the following measures: (1) Reorient or relocate the receiving antenna, (2) Increase the separation between the equipment and receiver, (3) Connect the equipment into an outlet on a circuit different from that to which the receiver is connected, (4) Consult the dealer or an experienced radio/TV technician for help.



### EN 55 022 Statement

This is to certify that the Model FA410TX Network Card is shielded against the generation of radio interference in accordance with the application of Council Directive 89/336/EEC, Article 4a. Conformity is declared by the application of EN 55 022 Class B (CISPR 22).

Compliance is dependent upon the use of shielded data cables.

### Canadian Department of Communications Radio Interference Regulations

This digital apparatus (Model FA410TX Network Card) does not exceed the Class B limits for radio-noise emissions from digital apparatus as set out in the Radio Interference Regulations of the Canadian Department of Communications.

### Règlement sur le brouillage radioélectrique du ministère des Communications

Cet appareil numérique (Model FA410TX Network Card) respecte les limites de bruits radioélectriques visant les appareils numériques de classe B prescrites dans le Règlement sur le brouillage radioélectrique du ministère des Communications du Canada.

# NETGEAR

NETGEAR, Inc.  
4500 Great America Parkway  
Santa Clara, CA 95054  
USA

Phone: 1-888-NETGEAR  
<http://www.NETGEAR.com>



## Customer Support

### Phone

U.S./Canada: 888-NETGEAR  
United Kingdom: 020-7216-0014  
France: 0800-77-17-53  
Germany: 00800-06384327  
Australia: 800-787-638  
New Zealand: 00800-1233-4566  
Korea: 00308-11-0319  
Sweden: 0200-298-298

### Internet/World Wide Web

The NETGEAR web page is at <http://www.NETGEAR.com>.



\* M - F A 4 1 0 T X N A - 1 \*