

Set Up PlayOn™

Installing and Setting Up PlayOn

Installing PlayOn Plugins

Accessing Your PlayOn Content

Related URLs

NETGEAR®

NETGEAR, Inc.
350 E. Plumeria Drive
San Jose, CA 95134 USA

August 2009
208-10533-01
v1.0

Installing and Setting Up PlayOn

To download the PlayOn software, click on the following link. It is free to use for a trial period.

Free Trial Software

If you would like to purchase the PlayOn software, for a limited time NETGEAR Digital Entertainer Express customers will receive a **25% discount** off of the suggested PlayOn retail price. Just enter the coupon code "NETGEAR" in the coupon code section on the PlayOn purchase price web page at the following link (you may also need your MAC address or the serial number of the Digital Entertainer Express found on the back of your unit):

Purchase PlayOn at 25% discount

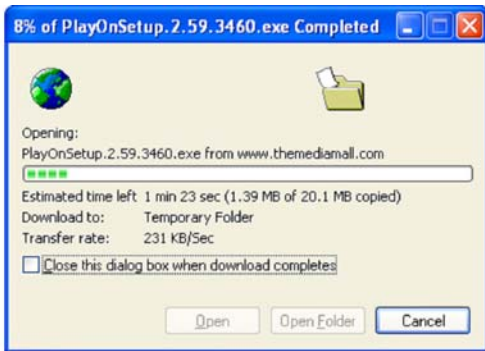
To install and set up PlayOn:

After downloading the PlayOn executable file, you need to install the program and set it up for use with the Digital Entertainer Express.

You have the option of saving the download to a temporary folder or running it directly from the download site. (NETGEAR recommends that you download the program first.)



Click **Save**. The program will begin to download.

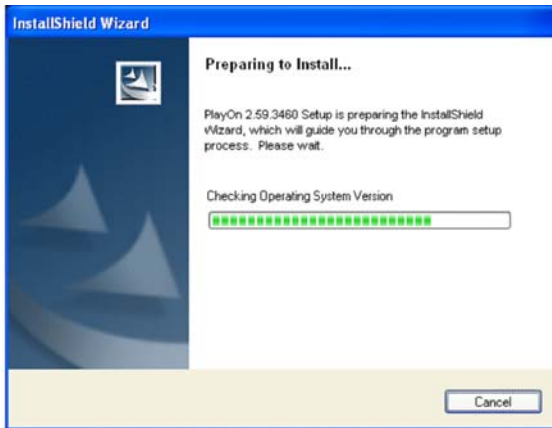


Wait until the program has completed downloading as indicated by the progress bars. When the download is complete, go to the folder where you downloaded the program, and run PlayOn from there.

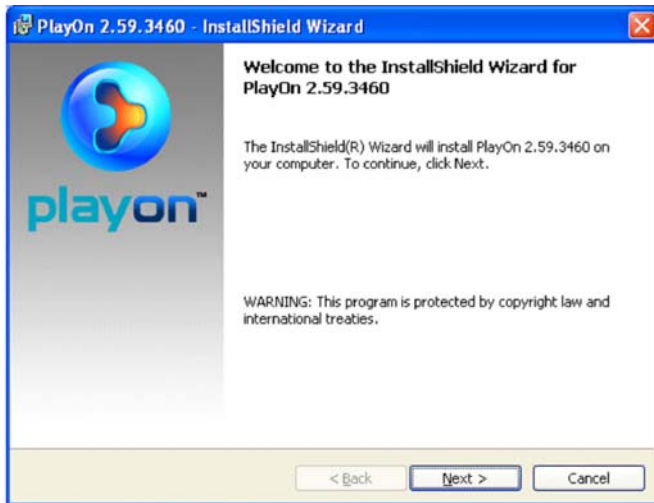
The following screen displays.



Click **Run**. The InstallShield Wizard displays and the installation will begin.



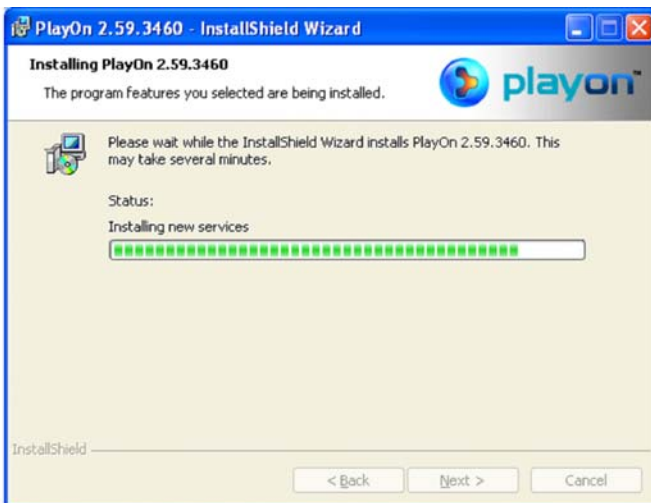
Wait until the installation is complete and the setup initializes, as indicated by the progress bars. When complete, the following PlayOn Installation Wizard displays.



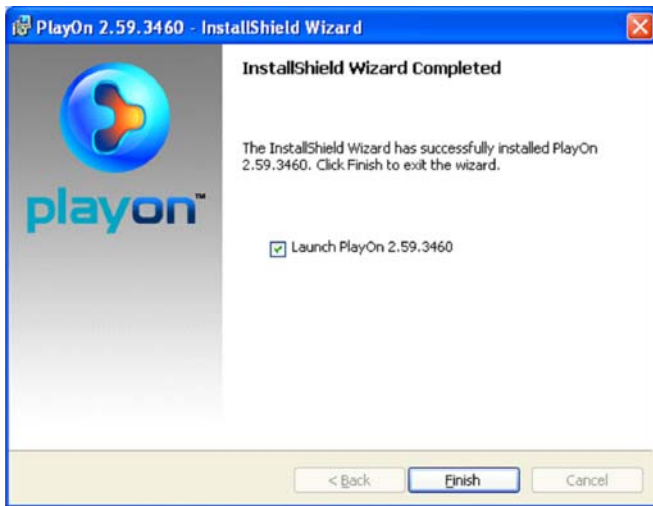
Click **Next**. The License Agreement screen displays.



Select the **I accept the terms....** radio box, and click **Next**. PlayOn will begin to install. This may take several minutes.

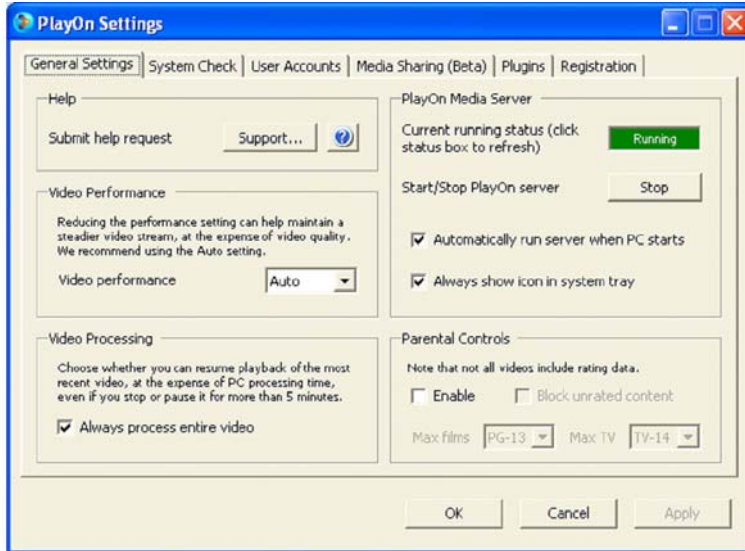


When the PlayOn installation is complete, the following screen displays:

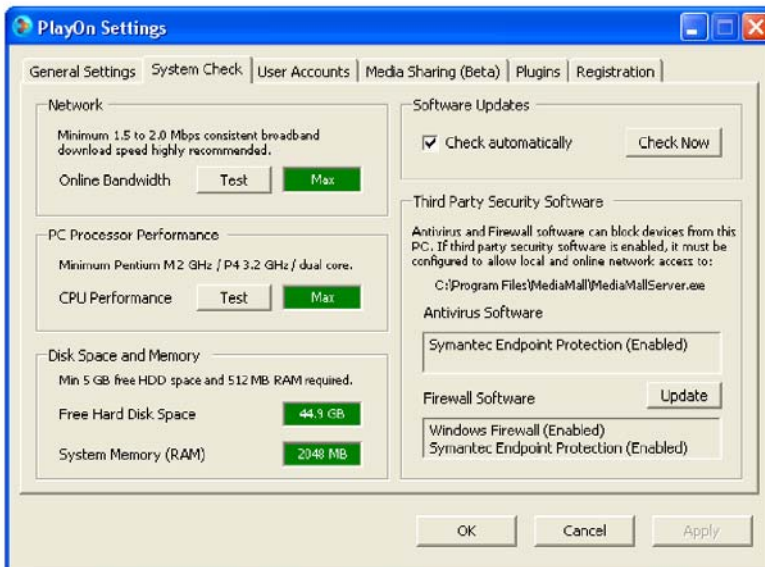


Make sure the **Launch PlayOn** radio box is checked and click **Finish**. The PlayOn Settings screen displays.

The PlayOn UPnP AV server is now available on your network. It will be displayed as PlayOn(<computer name>).



Accept the Default settings and click **Apply** to accept these settings or **OK** to close this window. Before closing the window, you may want to select the System Check tab to check on your Network and PC Processor performance.



Note: For best performance, Online Bandwidth, CPU Performance, Free Hard Disk space and System Memory (RAM) should all be green. If any area is highlighted red, that part of your computer or network may not be able to fully support PlayOn.

Installing PlayOn Plugins

A plugin can be installed into your installed PlayOn software that can give you access to additional content—either for a specific region (for example, UK) or on a specific topic. Following are links to some plugins available on the Internet:

- http://kb.netgear.com/app/answers/detail/a_id/10875
- For a wider selection of Internet plugin sites, see:
<http://www.themediamall.com/playon/plugins>
<http://www.playonplugins.com>

To install the plugin:

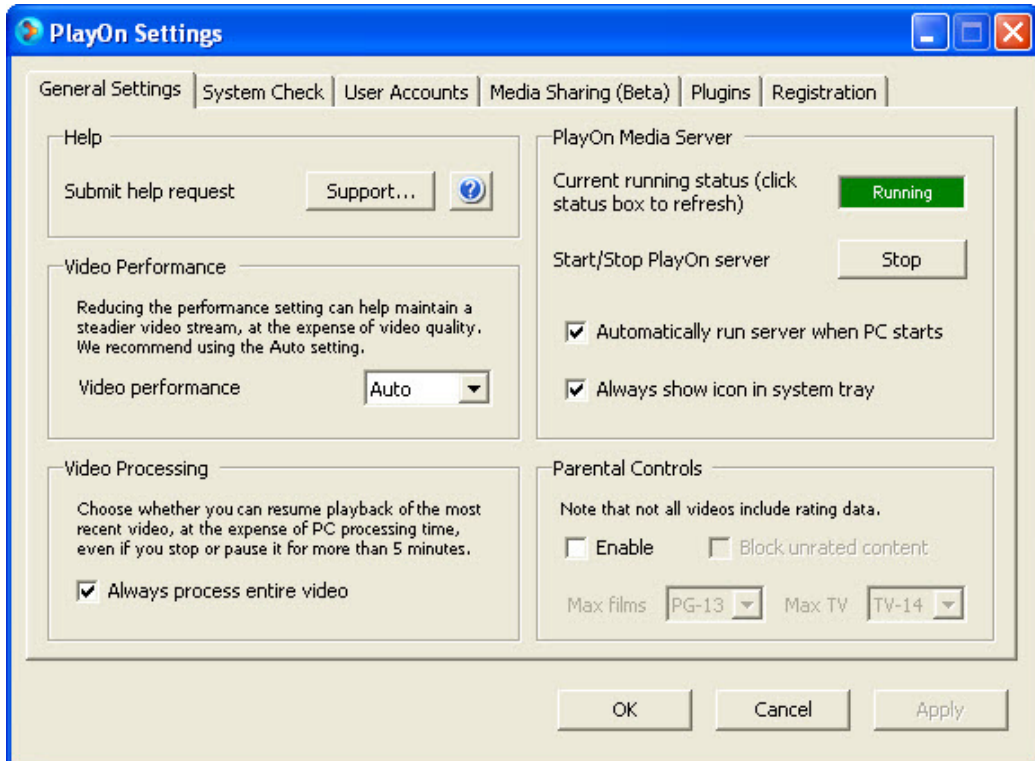
1. Download the PlayOn Plugin.

Some plugins are self-installing and others require that you manually place a **.plugin** file into your **C:\Program Files\MediaMall\plugins** folder. In both cases, after you install the plugin, you must restart the PlayOn software.

2. Double-click the PlayOn icon in your system tray as shown below.



3. In the PlayOn settings screen shown below, click **Stop**. Wait for the status to change and then click **Start**.



4. Click **OK** to close this screen.

If you have any problems installing or using the PlayOn software, please click the following link to access PlayOn support:

<http://www.themediamall.com/support>

Accessing Your PlayOn Content

To access your PlayOn Content:

1. From your TV, switch to the Digital Entertainer Express (EVA9100) input. Then, navigate to the **Internet media** folder.
2. Select **PlayOn (BETA)** to browse the PlayOn contents.
 - If you have multiple PlayOn UPnP AV servers on your network, the first UPnP AV server on your network will be pre-selected. If this is your PlayOn server (for example, PlayOn:Media), click **OK** to browse the PlayOn contents.
 - A list will be displayed for each plugin installed. Select a plugin to navigate through the plugin contents.

Related URLs

Following are important links about PlayOn and PlayOn plugins that can be used with your NETGEAR Digital Entertainer Express (EVA9100).

URL Content	Link
PlayOn Home Page	http://www.themediamall.com/playon
PlayOn free trial download	http://www.themediamall.com/playon/download
PlayOn purchase	http://www.themediamall.com/purchase
NETGEAR Digital Entertainer Express (EVA9100) PlayOn plugins	http://kb.netgear.com/app/answers/detail/a_id/10875
PlayOn plugins development	http://www.playonplugins.com
PlayOn software support	http://www.themediamall.com/support