

## GS108T 8-Port Smart Switch

# Start Here

Follow these instructions to set up your smart switch.

## Prepare to Install Your Smart Switch

- Prepare a PC with an Ethernet adapter and a CD ROM drive.
- Before proceeding with the smart switch installation, familiarize yourself with the contents of the *Resource CD*, especially the manuals that accompany this switch.

## First, Install the Smartwizard Discovery Utility on a PC

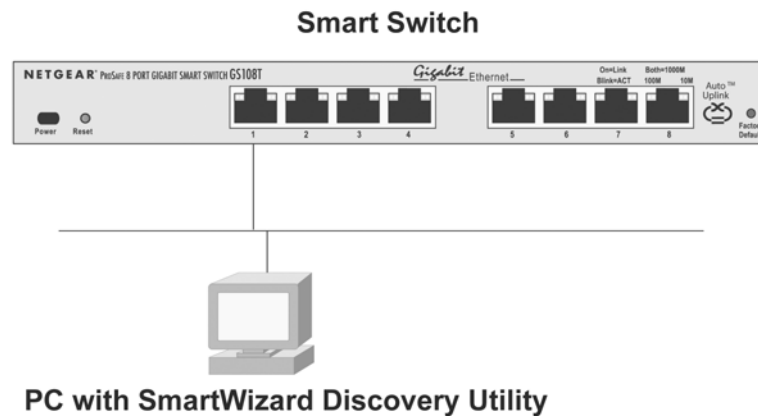
1. Power on your PC, let the operating system boot up, and log in as needed.
2. Insert the Resource CD for the Smart Switch Series into your CD drive. The
3. Run the Setup program to install the Smartwizard Discovery utility. Follow the prompts to complete the installation.
4. Click **OK** when done.

## Next, Connect Your Smart Switch in the Correct Order

These instructions assume you are using DHCP in your network. If you are using static IP addressing in your network, configure the switch IP address before connecting it to your network. In the absence of a DHCP server, the switch will default to 192.168.0.239 for its IP address.

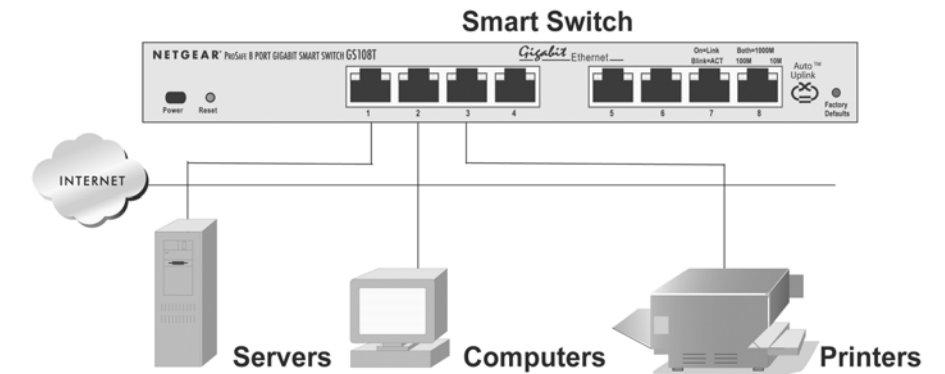
To configure the switch before connecting it to your network:

1. Set up the PC with an IP address in the 192.168.0.x subnet, and connect the PC to the switch.
2. Then, use the Smartwizard Discovery utility to configure the switch.




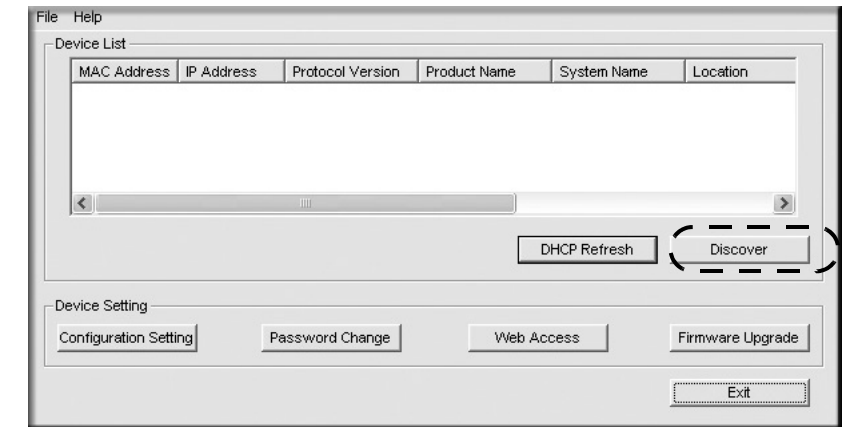
To connect the switch to your network:

1. Connect each device to an network port on the switch front panel.
2. Connect the smart switch to your network.
3. Connect the external power supply and power on the switch.
4. Verify that the PC with the Smartwizard Discovery utility is on the same subnet as the switch.

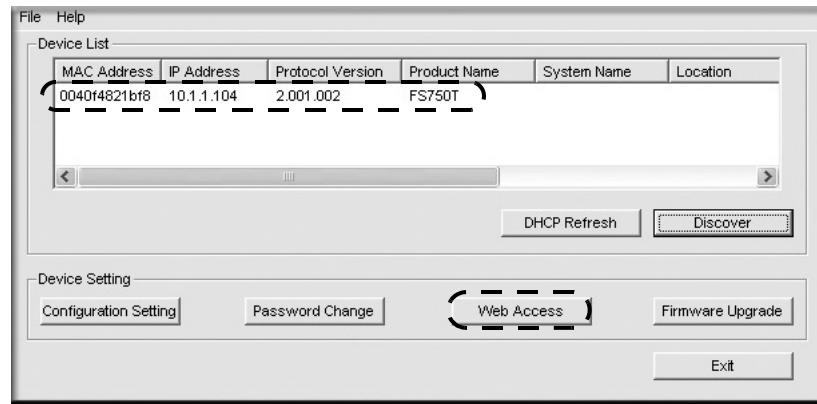


## Now, Configure the Switch with the Smartwizard Discovery Utility

1. Double click the **Smartwizard Discovery** icon  on your desktop or in Windows Start menu Programs to run the utility and view this screen.



2. Click **Discover** to find your switch in the network.



The Smartwizard Discovery utility finds the switch and displays its MAC Address, IP Address, and model number. If you cannot configure your switch, verify that the IP address configuration of the PC is in the same subnet as the switch. If they are not on the same subnet, click **Configuration Setting** and enable DHCP.

- Click to select the line displaying the details of your switch. If there are multiple smart switches in your network, be sure to select the one you want to configure.
- Click Web Access to view the switch Login screen.



201-11199-01

November 2007

- Enter the default password of **password** in lower case letters and click **Login**. The System > Management screen will display. Consult the *Resource CD* or the on-line link to the *Reference Manual* by selecting Help > User Guide for assistance with configuration procedures.



Select from the configuration menu options to configure the switch for your network.

## Troubleshooting Tips

Following are some tips to correct simple problems that might occur.

### Be sure to power on your PC and smart switch in the correct sequence.

Follow this sequence. Turn off the smart switch and computer. First, turn on the smart switch and wait two minutes. Next turn on the computer.

### Make sure the Ethernet cables are securely plugged in.

For each powered on computer connected to the smart switch with a securely plugged in Ethernet cable, the corresponding smart switch LAN port status light will be lit.

### Make sure the network settings of the computer are correct.

In most cases, computers should be configured to obtain an IP address automatically via DHCP.

If your network uses static IP addresses, be sure the switch and computer are configured with valid IP addresses.

## Technical Support

Thank you for selecting NETGEAR products.

After completing setup and configuration, locate the serial number on the bottom label of the Smart Switch and use it to register your product at <http://www.netgear.com/register>.

Registration on the web site or over the phone is required before you can use our telephone support service. The phone numbers for worldwide regional customer support centers are on the Warranty and Support Information card that came with your product.

Go to <http://www.netgear.com/support> for product updates and web support.



This symbol was placed in accordance with the European Union Directive 2002/96 on the Waste Electrical and Electronic Equipment (the WEEE Directive). If disposed of within the European Union, this product should be treated and recycled in accordance with the laws of your jurisdiction implementing the WEEE Directive.