



### Outdoor Access Point

The WND930 Outdoor Access Point is a dual band concurrent 802.11n Outdoor Access Point that combines high power, optimal high gain antennas, and an industrial grade enclosure for optimal outdoor deployment. WND930 Outdoor Access Point is powered by redundant dual Power over Ethernet (PoE) gigabit ports as well as the capability to power other PoE devices. The WND930 Outdoor Access Point operates under harsh environment conditions with its industrial grade IP67 enclosure and an embedded heater to allow the Access Point to operate in below freezing point temperatures. The WND930 Outdoor Access Point is ideal for hotels, resorts, schools, multi-dwelling apartments, and other locations needing high throughput, high capacity outdoor coverages. The WND930 Outdoor Access Point can operate either as a point-to-point mesh link between remote locations or as an Access Point providing coverages for users. As with all NETGEAR wireless products, the WND930 Outdoor Access Point is designed with an easy setup for a reliable, high performance and affordable total cost of ownership.

### Features

#### High powered for super coverage

- Up to 500 mW of RF output power combined with high gain (8 dBi) dual band internal antenna to maximize coverage
- High receive sensitivity (up to -90 dBm) to optimally balance uplink and downlink

#### Industrial grade enclosure to operate in harsh environment

- Ingress Protection marking of IP67 rated to operate in extreme environment
- Embedded heater automatically activates to allow proper operation in below freezing temperature

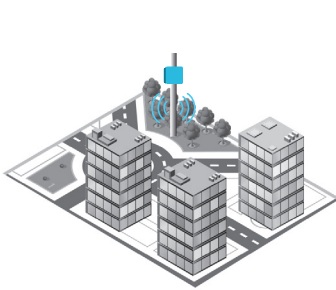
#### Flexible Power over Ethernet choices to maximize redundancy and deployment options

- Dual gigabit Ethernet ports with redundancy to enable the AP to continue to operate in the case of intermittent power failure
- PoE power sourcing (PSE) to power other PoE devices such as surveillance cameras directly from the WND930 Outdoor Access Point

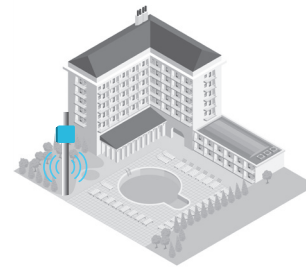
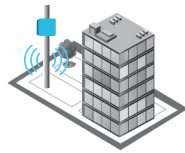
#### Flexible deployment options for a variety of applications

- Flexible deployment models including point to point mesh with embedded high gain directional antenna and access point mode with external antenna option
- Robust wall mounting and pole mounting kits for flexible deployment options

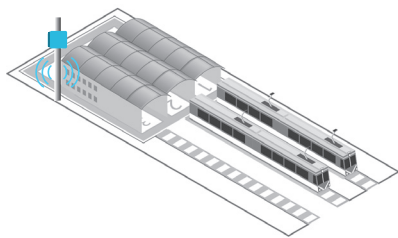
### Target Applications



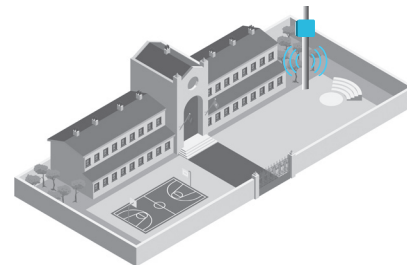
Outdoor coverage around office buildings and meshing to a remote location



Coverage around swimming pools in hotels



Wireless coverage in train stations and other public areas



Wireless coverage for school parking lots and sports complexes



IP67 rated high powered dual band access point



Flexible mounting option with pole mount



WND930 Outdoor Access Point with external antennas to provide hotspot coverage



PoE powered with 2 redundant gigabit port and one PoE (PSE) gigabit port



Wall mounting and pole mounting kit with water-tight Ethernet cable coupler



External omni antennas sold as optional accessory kit

### Technical Specifications

#### Physical Characteristics

##### Power

Power over Ethernet (802.3af or 802.3at)  
2 ports 802.3af or 1 port of 802.3at for AP operation  
2 ports of 802.3at for concurrent AP and PoE PSE operations

##### Physical Dimensions

Dimensions (LxWxH)  
255x225x78mm  
10 x10x3in

##### Weight

1894g (67oz)

##### Mounting

Wall mount/pole mount kit included

#### Interfaces and Indicators

##### Physical Interface

Two (10/100/1000Base-T Ethernet (RJ-45) port with Auto Uplink™ (Auto MDI-X) with PoE PD (Power over Ethernet In)  
One (10/100/1000Base-T Ethernet (RJ-45) port with Auto Uplink™ (Auto MDI-X) with PoE PSE (Power over Ethernet Out)

##### External Antenna Connectors

Two connectors for 2.4GHz antennas  
Type N connector (female)  
Two connectors for 5GHz antennas  
Type N connector (female)

##### LEDs

Power, Activity, 2.4GHz, 5GHz, Heater

##### Default Reset Button

#### Environmental Conditions

##### Operating Temperature

-4° to 140°F  
(-20° to 60°C)

##### Storage Temperature

-40° to 176°F  
(-40° to 80°C)

#### Operating Relative Humidity

Minimum 10%  
Maximum 90%

#### Storage Humidity

Minimum 5%  
Maximum 95%

#### MTBF

@ 25°C > 10,45K hours  
@ 60°C > 290,000 hours

#### Ingress Protection Marking

IP67 rated

#### Power Consumption

15.2 W max (heater off, no PoE out)  
25.1 W max (heater on, no PoE out)  
33.9 W max (heater off, PoE out)  
43.8 W max (heater on, PoE out)

#### Number of wireless clients supported

128

#### RF Characteristics

##### Standards

IEEE 802.11n 2.0 specification  
IEEE 802.11g  
IEEE 802.11b  
IEEE 802.11a

##### Frequency Band

2.4GHz and 5GHz dual band  
concurrent operation

##### Maximum RF Power Output (country dependent)

27dBm (500 mW) 2.4GHz  
26dBm (400 mW) 5GHz

##### Maximum Theoretical Throughput

300Mbps (2.4GHz)  
300Mbps (5GHz)

##### Antenna Gain

8dBi (2.4GHz)  
8dBi (5GHz)

##### Network Management

Standalone  
Centralized management (future)

#### Advanced Wireless Modes

WDS Point-to-point wireless bridge mode  
Wireless Access point mode

#### Security

Wired Equivalent Privacy (WEP) Encryption  
WiFi Protected Access Pre-shared Key (WPA-PSK, WPA2-PSK)  
MAC address filtering  
1 BSSID

#### 802.11e WMM

Wireless multimedia mode for QoS

#### Package Contents

- Outdoor High Power Wireless N Access Point
- Wall mounting bracket
- Pole mount clamps
- Weatherproof cable glands
- Installation guide
- Warranty/support information card

#### Warranty and Support

##### Warranty\*

NETGEAR 2-year warranty

##### Safety Certification

ITU-T K.21

##### Optional Support

PMB0351: 5 years OnCall 24x7  
PMB0331: 3 years OnCall 24x7  
PMB0311: 1 year OnCall 24x7

#### Product Ordering Information

- WND930-10000S  
High Powered Dual Band Outdoor 802.11n Wireless Access Point
- WND930-100NAS  
High Powered Dual Band Outdoor 802.11n Wireless Access Point (US)
- ANT24501B-10000S  
External antenna bundles (2 x 2.4GHz and 2 x 5GHz)

\* 2-Year Warranties cover hardware, fans, and internal power supplies - not external power supplies or software. Warranty is only valid for the original purchaser, and modifications to product may void the warranty. See <http://www.netgear.com/about/warranty/> for details. Basic phone support for 90 days from purchase and lifetime online chat support when purchased from a NETGEAR authorized reseller.

NETGEAR and the NETGEAR logo are trademarks and/or registered trades of NETGEAR, Inc. and/or its subsidiaries in the United States and/or other countries. Other brand names mentioned herein are for identification purposes only and may be trademarks of their respective holder(s). Information is subject to change without notice. © 2018 NETGEAR, Inc. All rights reserved.