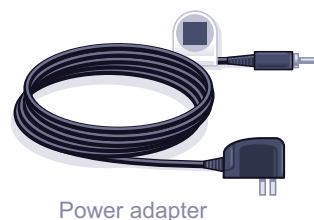
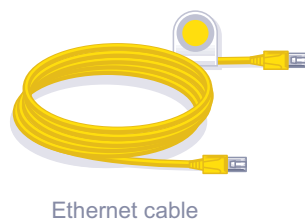
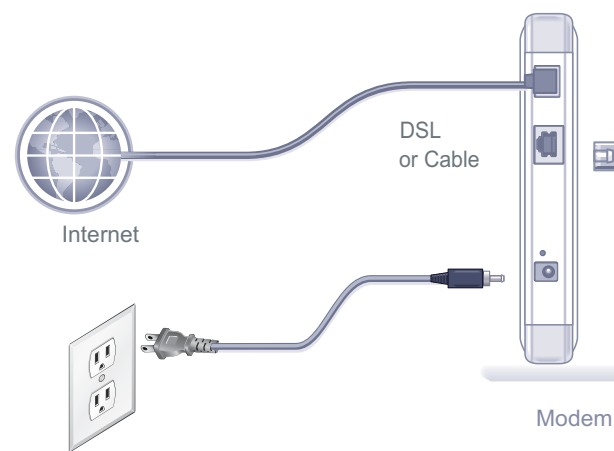


N300 Wireless Router WNR2000v3

Package Contents:



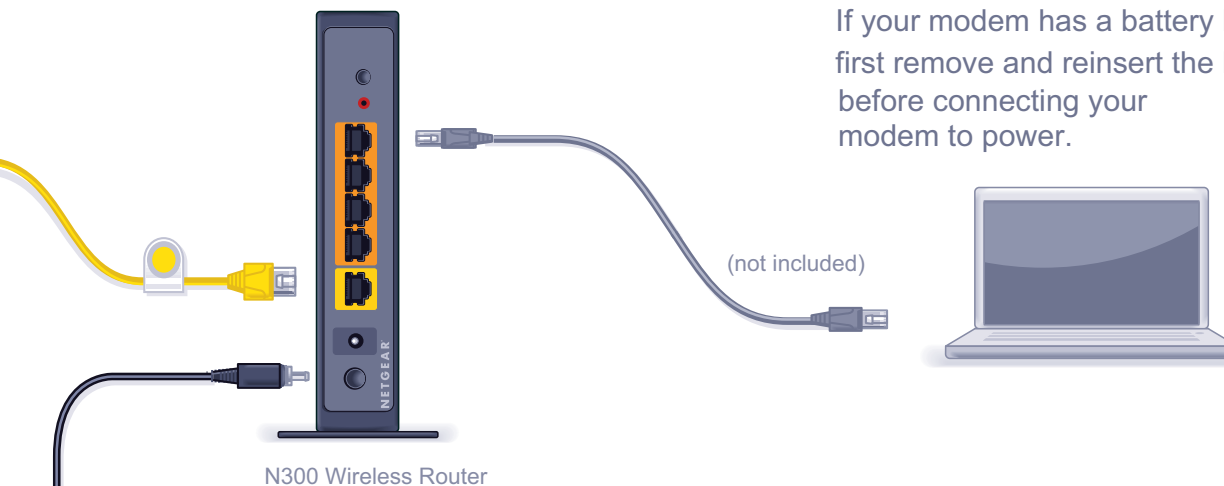
Step 1:
Unplug the power
to turn off your modem.



Step 4:
Connect the power adapter to the
router, then plug it into an outlet.
Wait until the wireless LED turns
solid green.

If none of the LEDs turn on, make sure that the Power On/Off button is in the ON position (pushed in).

Step 2:
Connect one end of the yellow
Ethernet cable (●) to your modem,
and the other end to the Internet port
on your router.



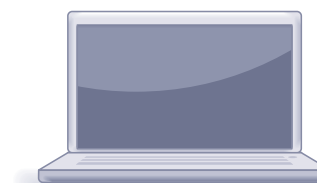
Step 5:
Connect the router
to your computer.
Use another Ethernet cable to establish
a wired connection as shown in this diagram.
Optionally, connect wirelessly by using the
preset wireless security settings
located on the bottom label.

Step 3:
Plug in, then turn on your modem.



Wait approximately 2 minutes
until your modem turns on.

If your modem has a battery backup,
first remove and reinsert the battery
before connecting your
modem to power.

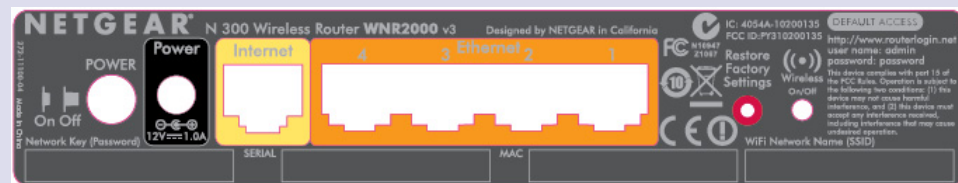


Step 6:
Open a browser.
If the Web page does not display,
close and re-open the browser
and enter <http://routerlogin.net>
in the address bar, or check the
“Troubleshooting” section on
the back of this installation guide.

Preset Wireless Security

This product has a unique Wi-Fi network name (SSID) and network key (password). The default SSID and network key (password) are uniquely generated for every device (like a serial number), to protect and maximize your wireless security. This information is located on the label on the bottom of the product.

NETGEAR recommends that you do not change the preset Wi-Fi network name (SSID) and network key (password). If you do change the settings, the information on the bottom of the product does not apply.



Find the preset Wireless Settings on your router and record them here:

Wi-Fi Network Name (SSID) _____

Network Key (Password) _____

If you change the preset wireless settings, record it here:

Wireless Network Name (SSID) _____

Network Key (Password) _____

If necessary to retrieve or update your password, type <http://www.routerlogin.net> in a Web browser and log in using the default user name (**admin**) and password (**password**).

Select **Wireless Settings** to locate your wireless password.



201-12701-04



June 2011

Connect Wireless Devices to Your Router

Choose either the manual or Wi-Fi Protected Setup (WPS) method to add wireless computers, and other devices to your wireless network.

Manual Method


1. Open the software utility that manages your wireless connections on the wireless device that you want to connect to your router (iPhone, laptop, computer, gaming device). This utility scans for all wireless networks in your area.
2. Look for the preset NETGEAR wireless network name (SSID), and select it. The preset Wi-Fi network name (SSID) is located on the product label on the bottom of the router.

Note: If you changed the name of your network during the setup process, look for that network name.

3. Enter the preset password (or your custom password if you changed it), and click **Connect**.
4. Repeat steps 1–3 to add other wireless devices.

WPS Method

If your wireless device supports WPS (Wi-Fi Protected Setup)—NETGEAR calls this method Push 'N' Connect—you might be prompted to press the WPS button on the router instead of entering a password. If this happens:

1. Press the **WPS** button  on the router.
2. Within 2 minutes, press the **WPS** button on the client device, or follow the WPS instructions that came with your wireless device to complete the WPS process. The device will then be connected to your router.
3. Repeat this process to add other WPS wireless devices.

Note: WPS does not support WEP security. If you try to connect a WEP client to your network using WPS, it will not work.

Troubleshooting

The browser cannot display the Web page.

- Make sure that the PC is connected to one of the four LAN Ethernet ports, or wirelessly to the router.
- Make sure that the router is fully up and running. Its wireless LED should turn on.
- Close and re-open the browser to make sure that the browser does not cache the previous page.
- Browse to <http://routerlogin.net>.
- If the PC is set to a static or fixed IP address (this is uncommon), change it to obtain an IP address automatically from the router.

Safety Information

The socket-outlet shall be installed near the equipment and shall be easily accessible.

For complete DoC please visit the NETGEAR EU Declarations of Conformity website at: http://kb.netgear.com/app/answers/detail/a_id/11621.

For GNU General Public License (GPL) related information, please visit http://kbserver.netgear.com/kb_web_files/open_src.asp.

Other Features

For additional features, including Live Parental Controls, Traffic Metering, Guest Access, and others, please log into your router at <http://routerlogin.net>.



Download the free NETGEAR Genie

Automatically fix common network problems and easily manage your home network connections.

<http://www.NETGEAR.com/genie>

© 2011 by NETGEAR, Inc. All rights reserved. NETGEAR and the NETGEAR logo are registered trademarks of NETGEAR, Inc. in the United States and/or other countries. Other brand and product names are trademarks or registered trademarks of their respective holders. Information is subject to change without notice.