

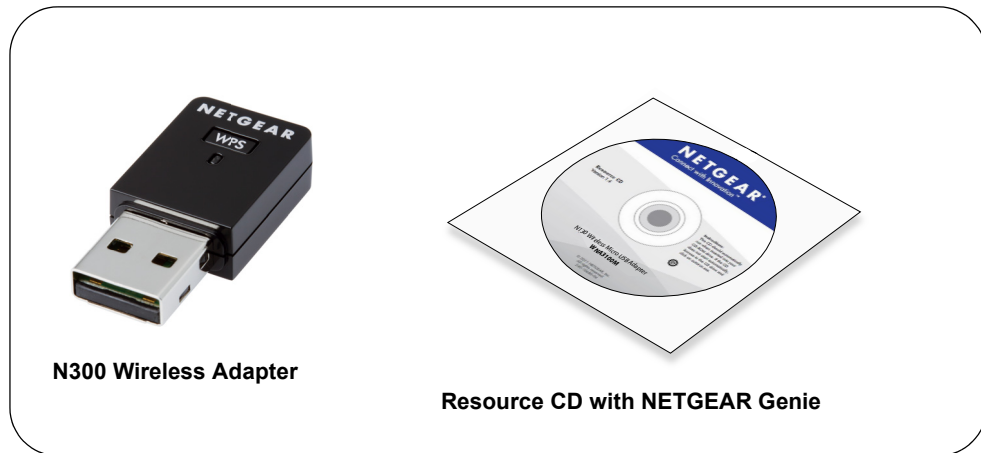


Connect with Innovation™

N300 WiFi USB Mini Adapter

Model WNA3100M

Package Contents

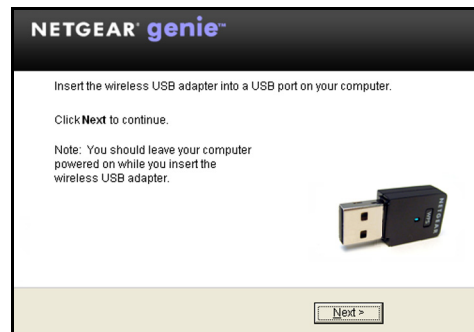


Installation

Estimated completion time: 10 minutes.

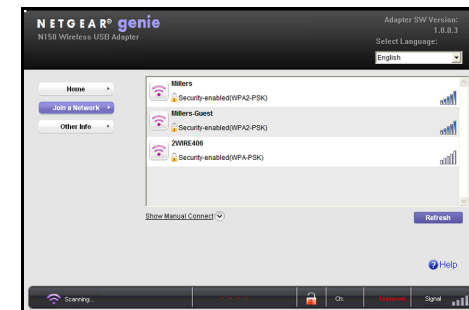
1. Insert the *Resource CD* in your computer's CD drive. If the CD main screen does not display, browse the files on the CD, and double-click **Autorun.exe**.
2. Click **Setup**.
The Software Update Check screen displays.
3. If you are connected to the Internet, click **Check for Updates**. If not, then click **Install from CD**.
4. Click **I agree** to accept the license agreement, and then click **Next**.

A message displays asking you to wait while software is installed. This might take a few minutes. Then you are prompted to insert your adapter.



5. Insert the adapter into a USB port on your computer.
Note: For best results, put the wireless adapter at least 4 feet (1 meter) away from your router.
6. Click **Next**.

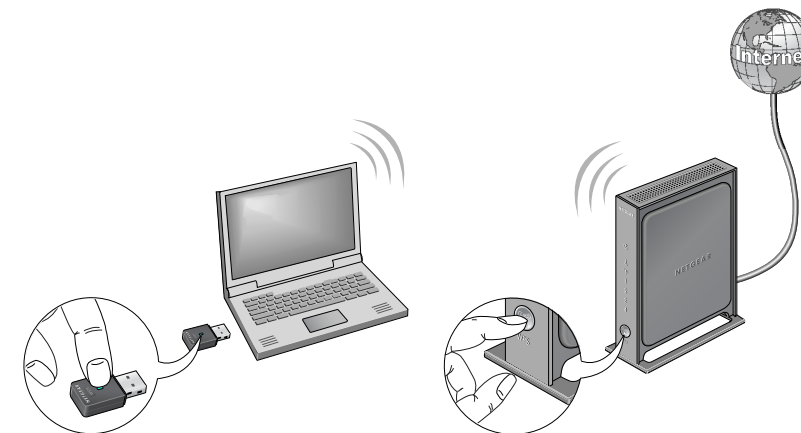
NETGEAR Genie displays a list of wireless networks in your area.



Join a Wireless Network

You can join a wireless network from this NETGEAR Genie screen, or you can use Wi-Fi Protected Setup (WPS) if your wireless network supports it.

- **NETGEAR Genie:** Click your wireless network to select it from the list, and then click **Connect**. If the network is secure, enter its password or network key.
- **WPS:** Press and hold the **WPS** button on the side of the adapter for 2 seconds. Within 2 minutes, press the **WPS** button on your wireless router or gateway.




The adapter joins the network, which can take a few minutes. Your settings are saved in a profile.

Check Your Connection Status

When you install your adapter, the adapter's **NETGEAR genie** icon displays in the Windows system tray and on the desktop. You can double-click this icon to open NETGEAR genie to make changes or connect to a different WiFi network. The color of the icon indicates the strength of your WiFi connection:

 **White.** Strong connection

 **Yellow.** Weak connection

 **Red.** No connection

If you remove your adapter, NETGEAR genie is not available, so the icon does not display. When you insert the adapter again, the icon returns.

Support

Thank you for purchasing this NETGEAR product.

After installing your device, locate the serial number on the label of your product and use it to register your product at <https://my.netgear.com>.

You must register your product before you can use NETGEAR telephone support. NETGEAR recommends registering your product through the NETGEAR website. For product updates and web support, visit <http://support.netgear.com>.

NETGEAR recommends that you use only the official NETGEAR support resources.

You can get the user manual online at <http://downloadcenter.netgear.com> or through a link in the product's user interface.

For the current EU Declaration of Conformity, visit http://support.netgear.com/app/answers/detail/a_id/11621/.

For regulatory compliance information, visit <http://www.netgear.com/about/regulatory/>.

See the regulatory compliance document before connecting the power supply.



201-14153-03

October 2014

NETGEAR, Inc.
350 East Plumeria Drive
San Jose, CA 95134, USA

NETGEAR, the NETGEAR logo, and Connect with Innovation are trademarks and/or registered trademarks of NETGEAR, Inc. and/or its subsidiaries in the United States and/or other countries. Information is subject to change without notice. © NETGEAR, Inc. All rights reserved.