

# NETGEAR® Installation Guide

## 54 Mbps Wireless USB 2.0 Adapter WG111

# Start Here

These basic setup instructions assume that you will connect to an access point, and you are not using WEP security. Please refer to the online help and the *Reference Manual* on the *Resource CD* for instructions on configuring WEP, Ad-Hoc mode, or advanced options.

Estimated Completion Time: 5-15 minutes for each notebook PC.

## Determine Placement of the USB Adapter

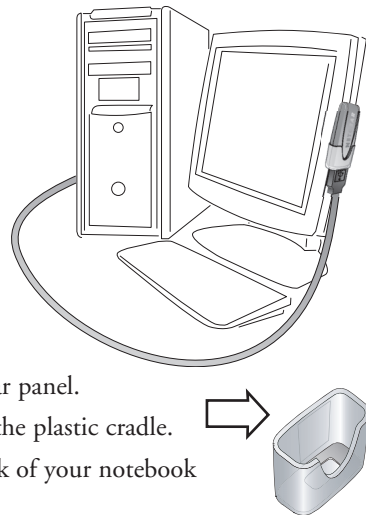
You can attach the WG111 54 Mbps Wireless USB 2.0 Adapter directly to a USB port on your computer, or use the USB cable to extend the range and obtain better wireless reception.

Follow these instructions to use the USB cable, plastic cradle, and velcro provided in the package for better USB Adapter placement on a notebook computer:

1. The WG111 54 Mbps Wireless USB 2.0 Adapter comes with 3 pieces of velcro. Locate the one that has a prickly side and attach it to the plastic cradle on the middle of the outside rear panel.
2. Insert the WG111 Wireless USB 2.0 Adapter in the plastic cradle.
3. Place one of the other pieces of velcro on the back of your notebook monitor near the top for better reception.

**Note:** The last piece of velcro can be placed on the side of your desktop PC monitor nearest your wireless access point, if you are using the USB Adapter with a desktop PC.

4. Join the pieces of velcro to attach the USB Adapter in the plastic cradle to the notebook or desktop monitor.
5. See the installation instructions for your operating system before attaching the USB cable to the USB Adapter and your computer.



## Windows XP

### 1 First, Install the WG111 Software

- a. Power on your PC, let the operating system boot up completely, and log in as needed.
- b. Insert the Resource CD for the WG111 into your CD-ROM drive. The CD main page shown below will load.



- c. Click the **Install Driver & Utility** link.
- d. Follow the InstallShield Wizard steps. You will be prompted to choose the country you are located in.
- e. Click **Finish** when done, and if prompted restart your computer.

### 2 Next, Install the WG111 54 Mbps Wireless USB 2.0 Adapter

- a. Locate an available USB port on your PC. Connect the USB cable to the WG111 and insert the other end of the cable into the USB slot on your PC.
- b. After a short delay, the Found New Hardware Wizard displays. Select Install the software automatically (Recommended) and click **Next**.



**Note:** If a Windows XP logo testing warning appears, click **Continue Anyway** to proceed.


- c. Next you will be prompted to enable the NETGEAR Smart Wireless Settings Utility configuration utility.




Click **Yes** to accept this option.

If you choose **No**, you must read the Windows XP documentation for an explanation of how to use the Windows XP wireless network configuration utility.

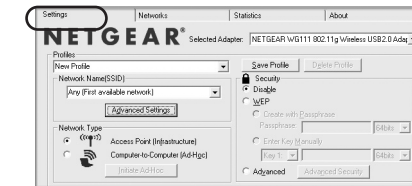
You will also be prompted to choose the country you are located in. Select your location from the list.

- c. Click **Finish** to complete the installation. You will see the WG111 system tray icon  on the lower right portion of the Windows task bar.

### 3 Now, Configure Your WG111 and Save the Profile

- a. Click the icon  in the Windows system tray to open the WG111 Smart Wireless Settings Utility.

The utility opens to the **Settings** tab page.




- b. Change the Network Name SSID to match your network.

**Tip:** To view the available wireless networks, use the drop-down list or the Networks tab and choose the one you want.

- c. Click **Apply** to activate the connection.

**Tip:** Create *work* and *home* profiles. Then, activate whichever one you need for your current location.

## 4 Finally, Verify Wireless Network Connectivity

- Verify that the status monitor information at the bottom of the utility matches your wireless network.
- Check the color of the WG111 icon  in the Windows system tray: green or yellow indicates a working connection; red indicates no connection.
- Check the WG111 LED: blinking means attempting to connect; solid indicates a good connection; off means the WG111 is not plugged in.
- Verify connectivity to the Internet or network resources.

**Note:** If you are unable to connect, see the Troubleshooting Chapter of the *Reference Manual* on the *Resource CD*.

## Windows 2000, Me, or 98SE

### 1 First, Install the WG111 Software

**Note:** Windows 2000 may require you to be logged on with administrator rights.

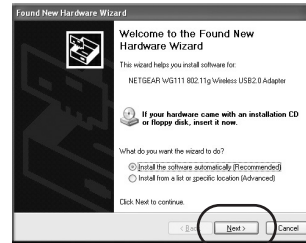
- Power on your PC, let the operating system boot up completely, and log in as needed.
- Insert the *Resource CD* for the WG111 into your CD-ROM drive. The CD main page shown below will load.



- Click the **Install Driver & Utility** link.
- Follow the InstallShield Wizard steps. You will be prompted to choose the country you are located in.
- Click **Finish** when done, and if prompted restart your computer.


### 2 Next, Install the WG111 54 Mbps Wireless USB 2.0 Adapter

- Locate an available USB port on your PC. Connect the USB cable to the WG111 and insert the other end of the cable into the USB slot on your PC.
- After a short delay, the Found New Hardware Wizard displays. Select Install the software automatically (Recommended) and click **Next**.



**Note:** If Windows 2000 displays a Digital Signature Not Found warning, click **Yes** to continue the installation.

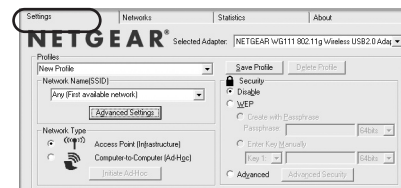
- Follow the Found New Hardware Wizard steps, click **Finish** when done, and if prompted, restart your computer.
- Next, you will be prompted to choose the country where you are located. Select your location from the list.

You will now see the WG111 system tray icon  in the lower right area of the Windows task bar.

### 3 Now, Configure Your WG111 and Save the Profile

- Open the WG111 Smart Wireless Settings Utility by clicking on the icon in the Windows system tray.

The utility opens to the Settings tab page.



- Change the Network Name SSID to match your network.


**Tip:** To view the available wireless networks, use the drop-down list or the Networks tab and choose the one you want.

- Click **Apply** to activate the connection.

**Tip:** Create *work* and *home* profiles. Then, activate whichever one you need for your current location.

**Note:** The status bar at the bottom of the utility reports the speed of your connection. 108 Mbps speed is only possible when your wireless network has a 108 Mbps access point such as in the NETGEAR WGT624 108 Mbps Wireless Firewall Router.

## 4 Finally, Verify Wireless Network Connectivity

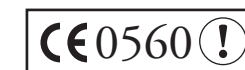
- Verify that the status monitor information at the bottom of the utility matches your wireless network.
- Check the color of the WG111 icon  in the Windows system tray: green or yellow indicates a working connection; red indicates no connection.
- Check the WG111 LED: blinking means attempting to connect; solid indicates a good connection; off means the WG111 is not plugged in.
- Verify connectivity to the Internet or network resources.

**Note:** If you are unable to connect, see the Troubleshooting Chapter of the *Reference Manual* on the *Resource CD*.

## Technical Support

PLEASE REFER TO THE SUPPORT INFORMATION CARD THAT SHIPPED WITH YOUR PRODUCT.

By registering your product at [www.NETGEAR.com/register](http://www.NETGEAR.com/register), we can provide you with faster expert technical support and timely notices of product and software upgrades.



**Attention:** This device may be used throughout the European community. Some restrictions may apply in France and Italy.



201-10153-01

May 2004

©2004 NETGEAR, Inc. NETGEAR, the Netgear logo, Everybody's connecting, ProSafe and Auto Uplink are trademarks or registered trademarks of Netgear, Inc. in the United States and/or other countries. Microsoft and Windows are registered trademarks of Microsoft Corporation in the United States and/or other countries. Other brand and product names are trademarks or registered trademarks of their respective holders. Information is subject to change without notice. All rights reserved.