



Declaration of Conformity
 For the complete EU Declaration of Conformity, visit
http://support.netgear.com/app/answers/detail/a_id/11621/

Warning: Choking hazard with small parts.
 Keep out of reach of small children.

VueZone Features

Camera Sync button
 Automatically connects all your VueZone cameras.

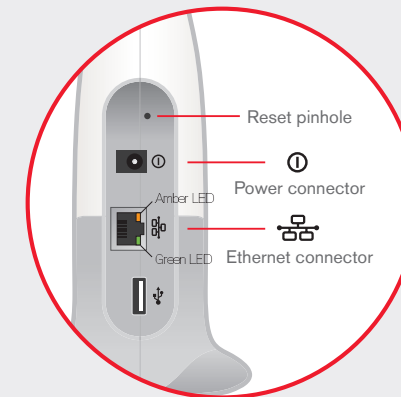
Sync LED

VueZone Base Station

Power LED
 Confirms your base station is powered on.

Internet LED
 Confirms a valid connection to the Internet.

Vue Status LED
 Indicates VueZone system activity.



VueZone Cameras

Sync LED

Motion sensor

Battery door latch and on/off switch (on camera bottom)



What's in the box

Welcome!
 Thank you for choosing VueZone. Now let's get started...it's easy!

Expand your view at VueZone.com

- Add-On Cameras
- Outdoor Shell
- Window Mounts
- Table & Ceiling Mounts
- Wall Mounts

Expand your VueZone.
 It's easy to add cameras and mounts so you can see more locations!



Visit VueZone.com to learn more.

For support information about VueZone products, visit <http://support.netgear.com>

NETGEAR, Inc.
 350 East Plumeria Drive
 San Jose, CA 95134 USA

© 2013 NETGEAR, Inc. All rights reserved.
 NETGEAR, VueZone, and the NETGEAR VueZone logo are trademarks or registered trademarks of NETGEAR, Inc. and/or its subsidiaries in the United States and/or other countries. Other brand and product names are registered trademarks or trademarks of their respective holders.



Quick Install Guide

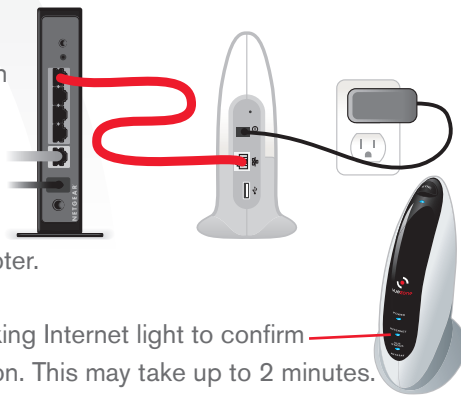
1 Connect your VueZone system to the Internet

Connect the base station to your router with the Ethernet cable.

Plug base station in with included AC power adapter.

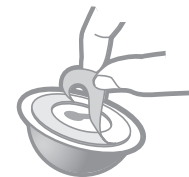
Wait for continuous blinking Internet light to confirm a valid Internet connection. This may take up to 2 minutes.

Note: if Internet light is not blinking after 3 minutes, please contact Customer Support before proceeding to Step 2.



4 Install cameras (wall mount shown)

Peel.



Remove strip from adhesive backing on mount. Do not remove if hanging mount on a screw.

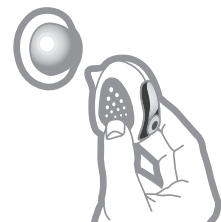
Mounts for windows and tabletops/ceilings are also available.

Stick.



Press mount firmly on a flat surface or hang from a screw.

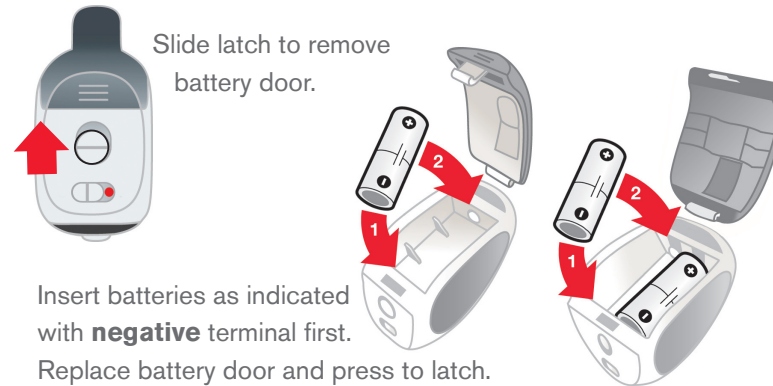
Position.



Place the camera on the magnetic mount and aim.

2 Install camera batteries

Same instructions apply for all VueZone camera models.



Insert batteries as indicated with **negative** terminal first. Replace battery door and press to latch.

Note: DO NOT turn on camera power switch yet.

5 Register your VueZone system

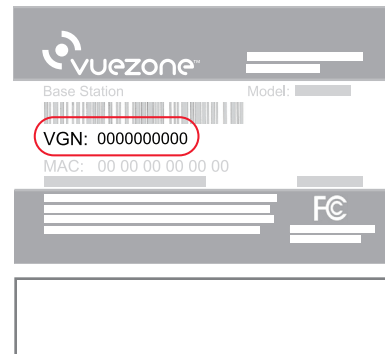
Go to VueZone.com/register

Follow the on-screen instructions.

When prompted, enter your VGN (Serial Number).

Your VGN (Serial Number) is located on the box and the bottom of the base station.

Write your VGN number here:

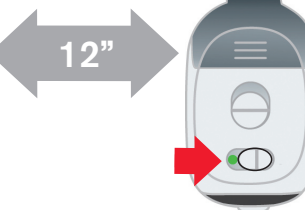


3 Sync cameras to base station

Click the Sync button on top of base station.

Blue Sync light will turn on.

Note: if camera syncing operation is not completed in 60 seconds, press Sync button again.



Hold camera within 12 inches of the base station and slide power switch ON (green dot showing).

Blue light on camera front will blink for 5 seconds to confirm sync – camera is ready to view.

Tip: each time power is turned ON, the VueZone motion detection cameras require 1 minute for the sensor to warm up and operate.

6 Get VueZone Mobile apps

Check in from anywhere! Download the free VueZone Mobile app for your iPhone or Android. During installation, you can conveniently use your phone to aim cameras.

Here are two ways to get VueZone Mobile:

Search for **VueZone** where you download apps



or

Simply scan this QR code directly from your phone



? We're here to help

Go to <http://support.netgear.com> for product updates and web support. Here you will also find installation assistance and comprehensive user guides for your VueZone product.

You can also access support by clicking the **Help** link when logged into your account at my.VueZone.com

Free phone support is available within 90 days of date of purchase. Online email support is available anytime.