

# Quick Start

## FlexPower ONVIF Wire-Free IP Camera

Model VNC4030-111PAS



NETGEAR®

### Package Contents



FlexPower  
Camera



Rechargeable  
battery



Power cable



Power adapter



Outdoor mount



Outdoor  
mount plate



Magnetic wall  
mount



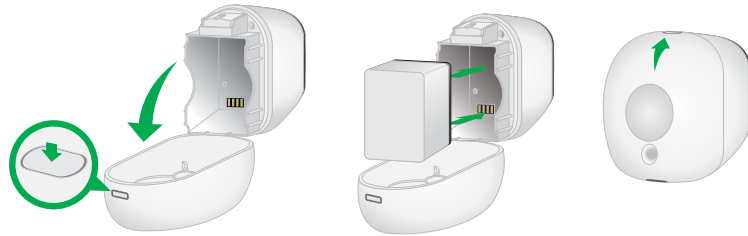
Mounting screws  
(2 sets of 2)



Drywall anchors

### Step 1: Insert the Battery

1. Unlock the battery compartment by pressing and holding the latch.
2. Gently pull the battery door back to open the compartment.



3. Align the battery contacts.
4. Insert the battery.
5. Close the battery door.

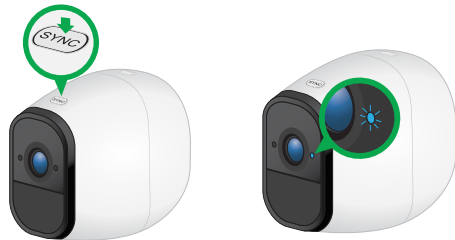
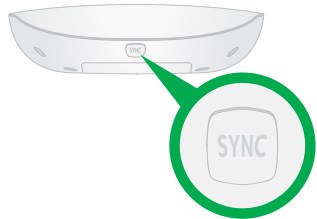
### Camera LED Guide

Camera State	LED Behavior
General	<b>Blinks blue once.</b> The camera was powered on. <b>Blinking blue and amber.</b> A firmware update is in progress. Do not turn off the camera. <b>Off.</b> The camera is either powered off or is powered on and is synced to a base station.
Syncing	<b>Slow blinking blue.</b> The camera is attempting to sync to a base station. <b>Fast blinking blue.</b> The camera is syncing with a base station. <b>Fast blinking amber.</b> The camera did not sync.
Charging	<b>Fast blinking blue.</b> The camera is connected to power and is charging. <b>Solid blue.</b> The camera is powered on and the battery is fully charged. <b>Slow blinking amber.</b> The camera battery charge is low. <b>Fast blinking amber.</b> The power connection failed.

### Step 2: Sync Your Camera With the Base Station

You must install the base station before you can sync the cameras.

1. Bring the camera within 2 to 4 feet (60 to 120 cm) of the base station.
2. Press the **Sync** button on the front of the base station for about two seconds and release the button.  
The base station camera LED blinks green.
3. Press the **Sync** button on top of the camera for about two seconds and release the button.



The camera LED blinks blue. When the camera is synced to the base station, the camera LED blinks rapidly to confirm sync.

**Note:** The camera LED blinks amber if the sync is not successful. You must repeat the sync process.

© NETGEAR, Inc., NETGEAR and the NETGEAR Logo are trademarks of NETGEAR, Inc. Any non-NETGEAR trademarks are used for reference purposes only.

**NETGEAR INTL LTD**  
Building 3, University Technology Centre  
Curraheen Road, Cork, Ireland

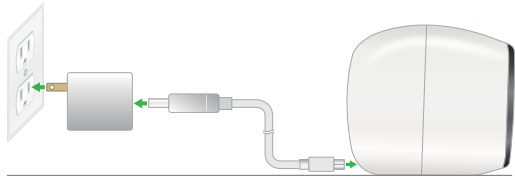
**NETGEAR, Inc.**  
350 East Plumeria Drive  
San Jose, CA 95134, USA



## Charge the Camera Battery

The rechargeable battery is fully charged when it leaves the factory.

1. Place the camera indoors.  
If you are using the camera outdoors, bring it inside while charging the battery.
2. Connect the power adapter cable to the camera power adapter.  
You must use the power adapter and cable that came with the camera.



3. Connect the other end of the adapter cable to the camera.
  4. Plug the power adapter into an electrical outlet.
- The camera LED lights solid blue when the camera battery is fully charged.

## Access the Base Station Camera Feeds

1. Connect your computer or mobile device to the same LAN as the base station.  
If you are unable to connect to the same LAN using WiFi, use an Ethernet cable to connect a computer to the same router or switch as the base station.
2. Do one of the following:
  - **Windows-based computer.** Open a folder and then click **Network** or **Network Places**. Look for a **FlexPowerBS-xxx** icon. It might appear in the other devices category.
  - **Mac, Linux, or mobile device.** Open a web browser and enter **http://FlexPowerBS-xxx/** (replace xxx with the last 3 digits of the base station serial number). The serial number is on the base station label.
  - **IP address.** Use your router's admin web interface or a network scan tool to look up the IP address for the base station and then type the IP address into your browser address bar.
3. Enter the password.  
The default password is **password**. The base station web page displays the cameras that are linked to the base station.
4. To test the camera feed, tap or click the **Snapshot** button to refresh the camera image for each camera.

## Add Your Camera to an ONVIF-Compliant VMS

**Note:** We recommend that the camera and the VMS hardware are on the same LAN and subnet.

1. Log in to the base station.  
The base station web page displays.
2. Tap or click the gear icon near the camera.
3. Note the IP address next to Network.
4. Open your VMS software.
5. Follow the instructions provided by your VMS vendor to discover an ONVIF camera.  
If the automatic discovery process does not work, you might need this information to manually add the camera to your VMS:
  - **IP address found in Step 3.**
  - **Port.** HTTP: 80, RTSP:554
  - **The camera's login credentials.** The camera user name is **admin** and the default password is **password**. (The camera password might be different from the base station's admin password.)
6. Select **ONVIF** or **Generic ONVIF** as the device type.
7. For best performance, select **h.264** for video.  
After you add the camera to the VMS, you can select one of three default streaming profiles or create your own custom profile.
8. Adjust the bitrate as needed for your network environment.  
Reduce the bitrate in environments with high 2.4 Ghz interference or if the camera must be placed far away from the nearest base station.
9. Select no more than 24 frames per second as the frame rate.

**Note:** For information about wall-mounting the camera indoors or outdoors, see the *Wall-Mounting the FlexPower Camera* guide that came with your camera.

## Support

Thank you for purchasing this NETGEAR product. You can visit [www.netgear.com/support](http://www.netgear.com/support) to register your product, get help, access the latest downloads and user manuals, and join our community. We recommend that you use only official NETGEAR support resources.

Si ce produit est vendu au Canada, vous pouvez accéder à ce document en français canadien à <http://downloadcenter.netgear.com/other/>.

(If this product is sold in Canada, you can access this document in Canadian French at <http://downloadcenter.netgear.com/other/>.)

For the current EU Declaration of Conformity, visit [http://support.netgear.com/app/answers/detail/a\\_id/11621/](http://support.netgear.com/app/answers/detail/a_id/11621/).

For regulatory compliance information, visit <http://www.netgear.com/about/regulatory/>.

See the regulatory compliance document before connecting the power supply.