


NETGEAR®

ReadySHARE Printer User Manual

March 2017
202-11578-04

350 East Plumeria Drive
San Jose, CA 95134
USA



Support

Thank you for purchasing this NETGEAR product. You can visit www.netgear.com/support to register your product, get help, access the latest downloads and user manuals, and join our community. We recommend that you use only official NETGEAR support resources.

Conformity

For the current EU Declaration of Conformity, visit http://kb.netgear.com/app/answers/detail/a_id/11621.

Compliance

For regulatory compliance information, visit <http://www.netgear.com/about/regulatory>.

See the regulatory compliance document before connecting the power supply.

Trademarks

© NETGEAR, Inc., NETGEAR and the NETGEAR Logo are trademarks of NETGEAR, Inc. Any non-NETGEAR trademarks are used for reference purposes only.

Contents

Chapter 1 Set Up ReadSHARE Printer

Supported NETGEAR Routers	5
Install the Printer Driver and Set Up the Printer	5
Download and Install the ReadySHARE Printer Utility	5

Chapter 2 Use NETGEAR USB Control Center

Print Using the NETGEAR USB Control Center	9
View or Change the Status of a Printer	10
Use the Scan Feature of a Multifunction USB Printer	11
Change NETGEAR USB Control Center Settings	12
Turn Off Automatic Startup for NETGEAR USB Control Center	13
Change the Language in NETGEAR USB Control Center	14
Specify the Time-Out for NETGEAR USB Control Center	15

Set Up ReadySHARE Printer

1

The ReadySHARE Printer utility lets you share a USB printer that is connected to a USB port on your router. You can share this USB printer among the Windows and Mac computers on your network.

This chapter contains the following sections:

- *Supported NETGEAR Routers*
- *Install the Printer Driver and Set Up the Printer*
- *Download and Install the ReadySHARE Printer Utility*

For more information about the topics covered in this manual, visit the support website at <http://support.netgear.com>. For more information about ReadySHARE features, visit www.netgear.com/readyshare.

Supported NETGEAR Routers

To determine if your NETGEAR router supports ReadySHARE Printer, see your router's user manual, which is available at <http://downloadcenter.netgear.com>.

Install the Printer Driver and Set Up the Printer

Some USB printer manufacturers (for example, HP and Lexmark) request that you do not connect the USB cable until the installation software prompts you to do so.

➤ **To install the printer driver and set up the printer:**

1. Connect your computer to the router's network.
2. Install the USB printer driver software on each computer on your network that shares the USB printer.

If you cannot find the printer driver, contact the printer manufacturer to find and download the most recent printer driver software.

3. Make sure that your computer can connect to the USB printer and print.
4. Connect the USB printer to a USB port on the router using the USB printer cable.

Download and Install the ReadySHARE Printer Utility

You must install the ReadySHARE Printer utility on each computer that will share the printer. After you install it, the utility displays as NETGEAR USB Control Center on your computer.

➤ **To download and install the ReadySHARE Printer utility:**

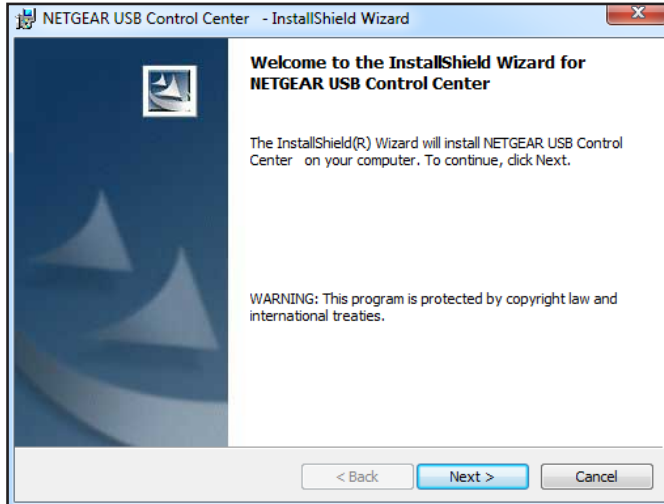
1. Visit <http://support.netgear.com/product/ReadySHARE%2bUSB%2bPrinter>.
2. In the Downloads section, download the ReadySHARE Printer utility for either Windows or Mac computers.

The file downloads to your computer.

3. If necessary, unzip the ReadySHARE Printer utility setup file you downloaded.

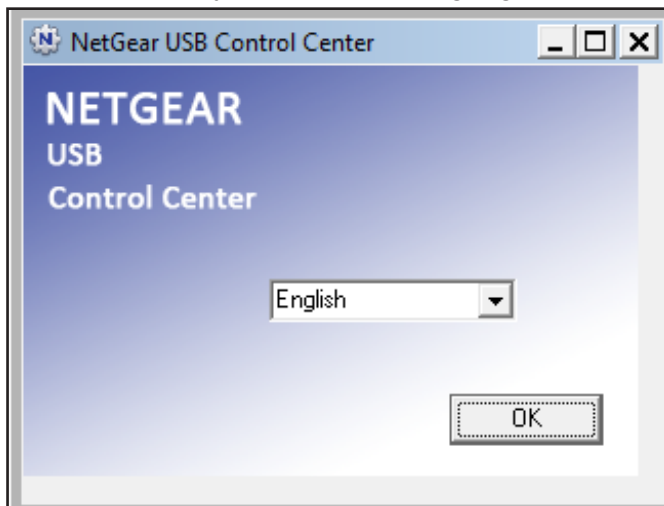
ReadySHARE Printer

4. Double-click the ReadySHARE Printer utility setup file that you downloaded.

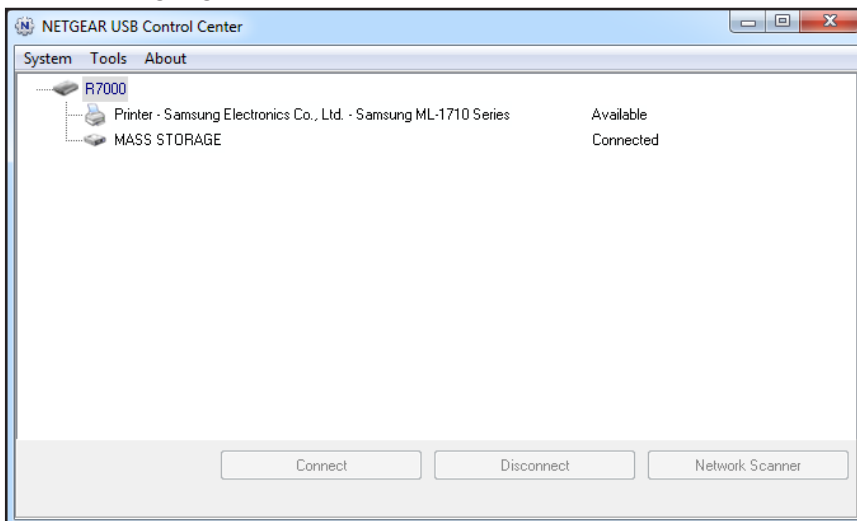


5. Follow the wizard instructions to install NETGEAR USB Control Center.

After the InstallShield Wizard completes the installation, the NETGEAR USB Control Center prompts you to select a language:



6. Select a language from the menu and click the **OK** button.



The USB printer connected to the router displays in the NETGEAR USB Control Center window.

Note: Some firewall software, such as Comodo or Norton, blocks NETGEAR USB Control Center from accessing the USB printer. If you do not see the USB printer displayed in the utility, you can disable the firewall temporarily to allow the utility to work.

2 Use NETGEAR USB Control Center

2

After you install the ReadySHARE Printer utility, the utility displays as NETGEAR USB Control Center on your computer.

This chapter contains the following sections:

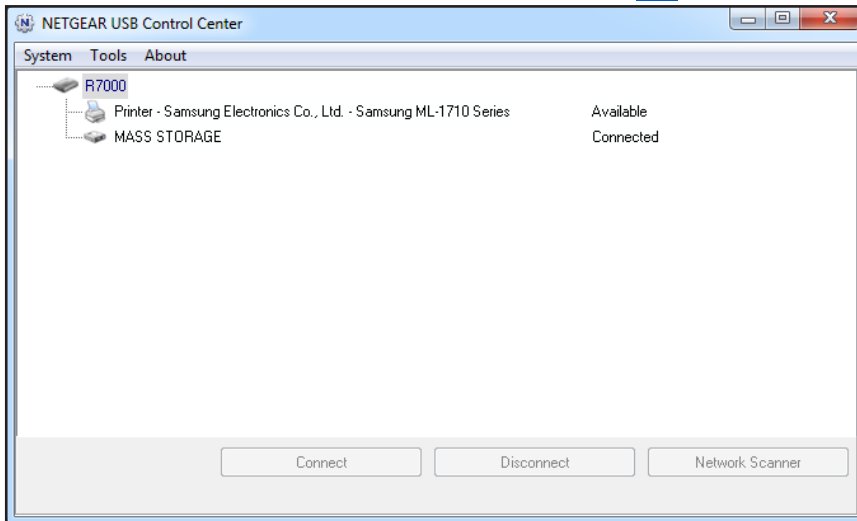
- *Print Using the NETGEAR USB Control Center*
- *View or Change the Status of a Printer*
- *Use the Scan Feature of a Multifunction USB Printer*
- *Change NETGEAR USB Control Center Settings*

Print Using the NETGEAR USB Control Center

For each computer, after you click the **Connect** and **Disconnect** buttons once, the utility automatically manages the printing queue and handling. By default, the utility starts automatically whenever you log on to Windows and runs in the background.

➤ **To print a document using the NETGEAR USB Control Center:**

1. Click the **NETGEAR USB Control Center** icon .



2. Select a printer and click the **Connect** button.

The printer status changes to *Manually connected by Mycomputer*. Now only the computer you are using can use this printer.

3. Use the print feature in your application to print your document.

The NETGEAR USB Control Center automatically connects your computer to the USB printer and prints the document. If another computer is already connected to the printer, your print job goes into a queue to wait to be printed.

4. If your document does not print, use the NETGEAR USB Control Center to check the printer status.

For more information, see [View or Change the Status of a Printer](#) on page 10.

5. To release the printer so that all computers on the network can use it, click the **Disconnect** button.

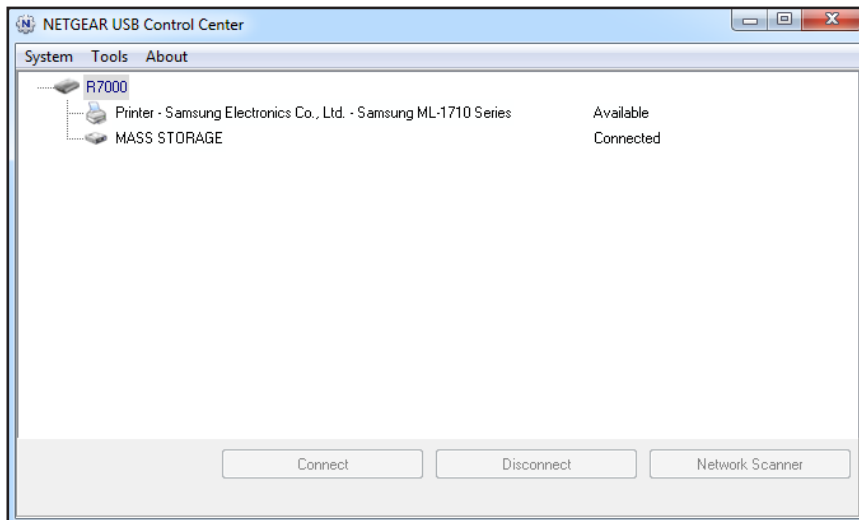
The status changes to *Available*. Now any computers on the network can use the printer.

6. To exit the utility, select **System > Exit**.

View or Change the Status of a Printer

➤ To view or change the status:

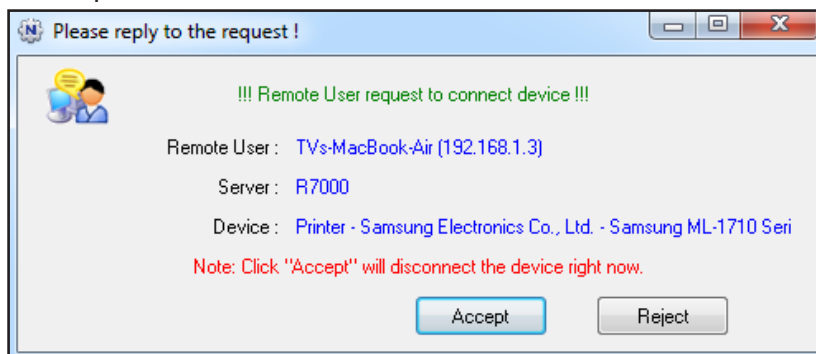
1. Click the **NETGEAR USB Control Center** icon .



The Status column shows the status for each device:

- **Available.** No print jobs are in progress. You can use the USB printer from any computer in the network.
 - **Connected.** Your computer is connected to the printer and will be released when your print job is done.
 - **Manually Connected by.** Only the connected computer can use the printer.
 - **Waiting to Connect.** Your computer is not connected to the shared printer yet.
2. To print from your computer when the printer status shows Manually connected by *another computer*, do the following:
 - a. Click the **Connect** button on your computer.

On the other user's computer, a message displays that another user wants to connect to the printer.



- b. On the other user's computer, click the **Accept** button.

The printer is released from the connection and the printer status on your computer changes to Available.

- 3. To print from your computer when the status shows Waiting to Connect, do the following:

- a. Click the **Connect** button.

The printer status changes to Manually connected by *Mycomputer*. Now only your computer can use the printer.

- b. To allow the printer to be shared, click the **Disconnect** button.

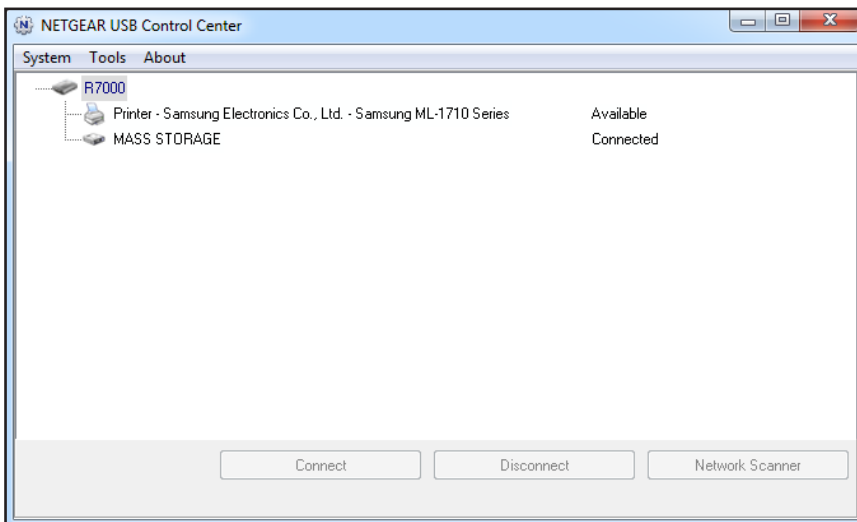
The printer is released from the connection and the status changes to Available.

Use the Scan Feature of a Multifunction USB Printer

If your USB printer supports scanning, you can also use the USB printer for scanning.

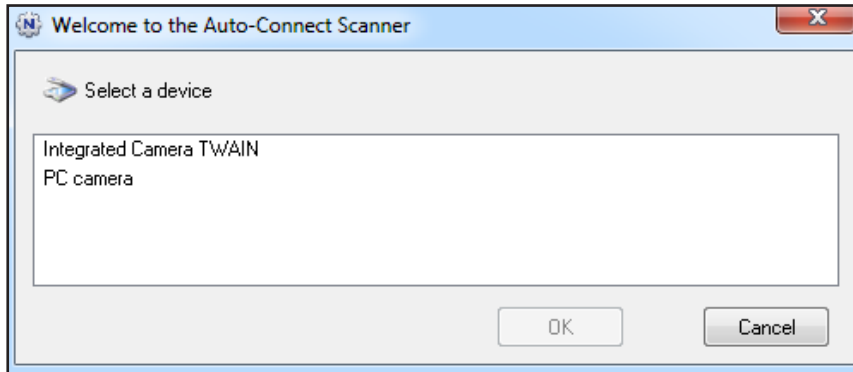
- **To use the scan feature of a multifunction USB printer:**

- 1. Click the **NETGEAR USB Control Center** icon .

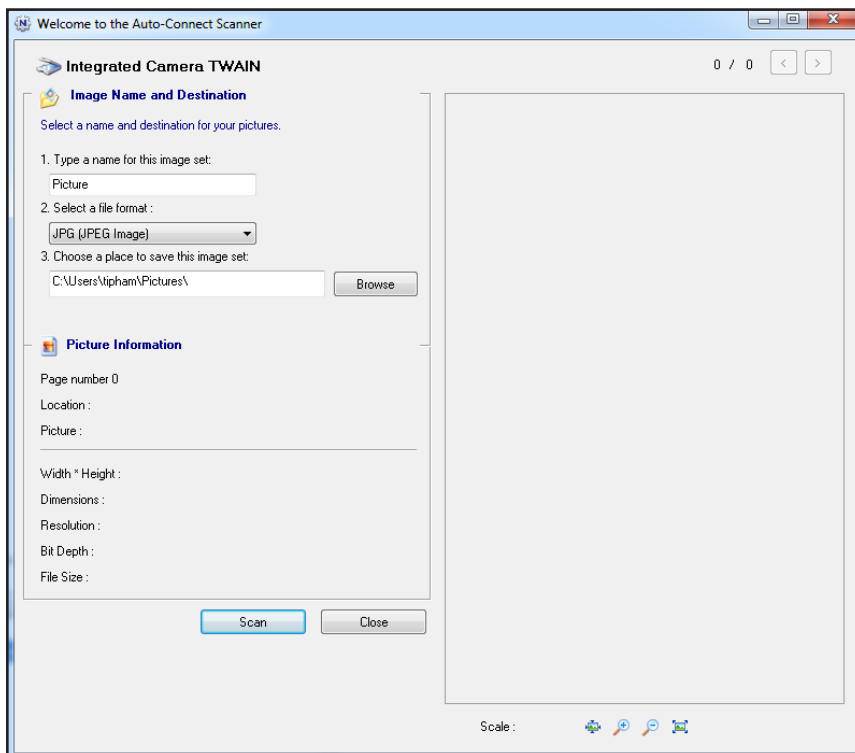


- 2. Make sure that the printer status shows as Available.
- 3. Click the **Network Scanner** button.

4. If a Select a Device window displays, select the scanner and click the **OK** button.



The scanner window displays so that you can use the USB printer for scanning.



Change NETGEAR USB Control Center Settings

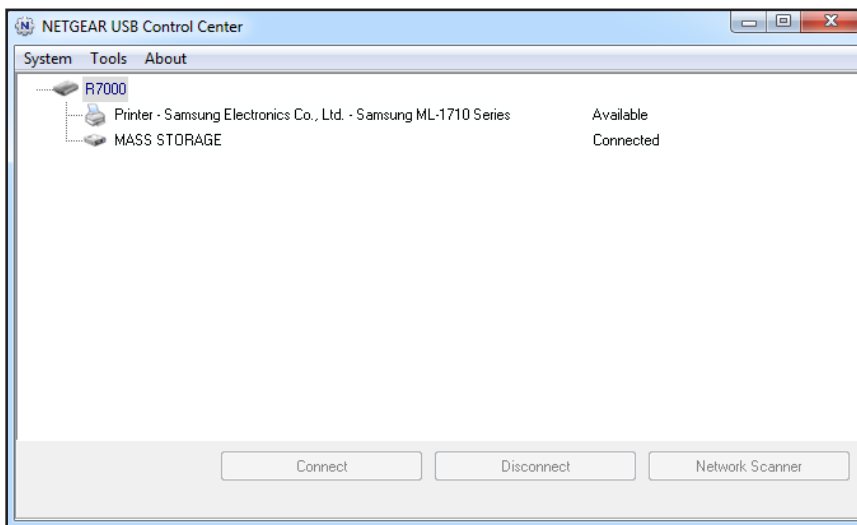
You can stop the NETGEAR USB Control Center from starting automatically when you log in to Windows. You can also change the language and specify the time-out to release the printer connection.

Turn Off Automatic Startup for NETGEAR USB Control Center

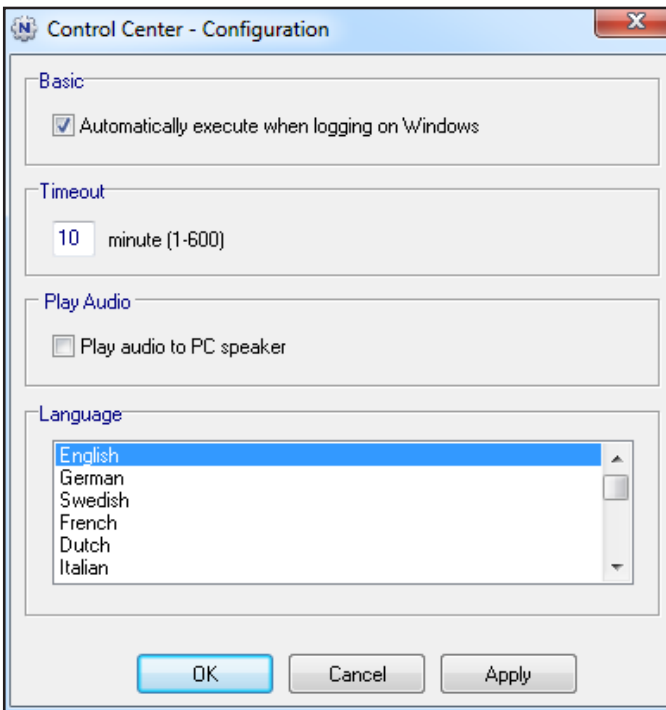
You can stop the NETGEAR USB Control Center from starting automatically when you log in to Windows.

➤ **To turn off automatic NETGEAR USB Control Center startup:**

1. Click the **NETGEAR USB Control Center** icon .



2. Select **Tools > Configuration**.



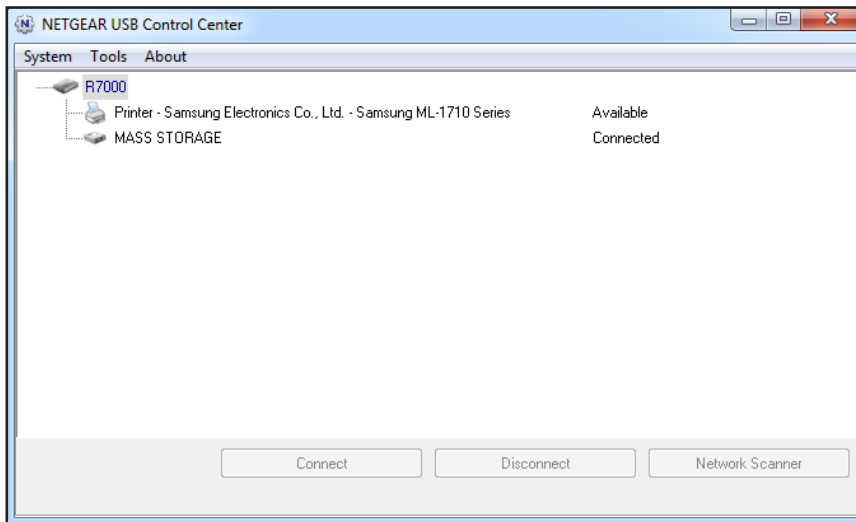
3. Clear the **Automatically execute when logging on Windows** check box.
4. Click the **OK** button.

Your settings are saved.

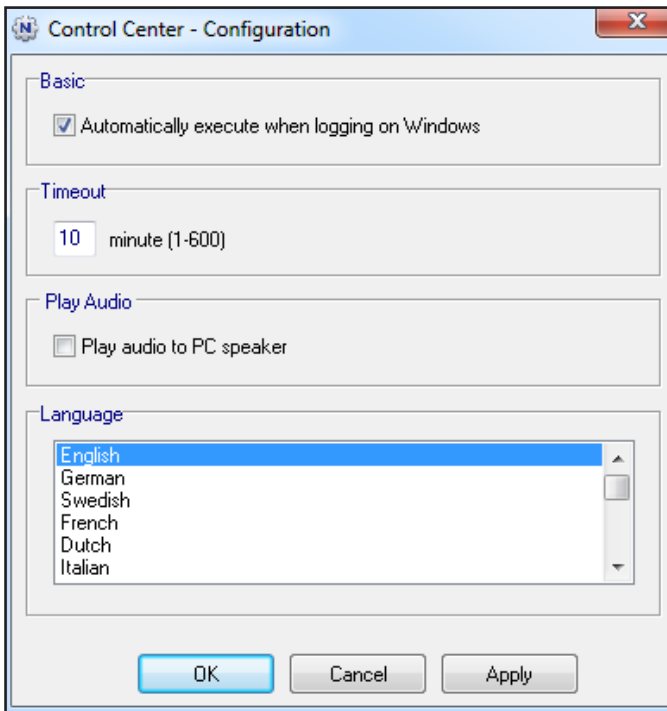
Change the Language in NETGEAR USB Control Center

➤ To change the language:

1. Click the **NETGEAR USB Control Center** icon .



2. Select **Tools > Configuration**.



3. In the **Language** menu, select a language.
4. Click the **OK** button.

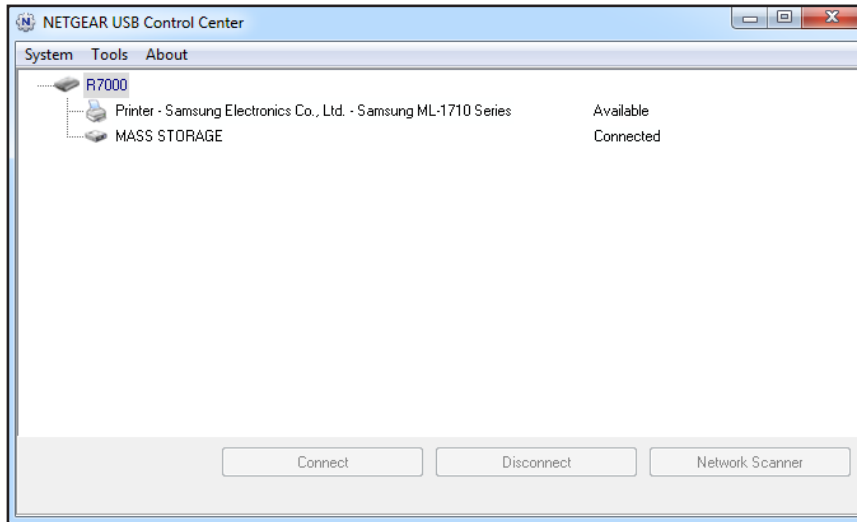
The next time NETGEAR USB Control Center starts, the language changes.

Specify the Time-Out for NETGEAR USB Control Center

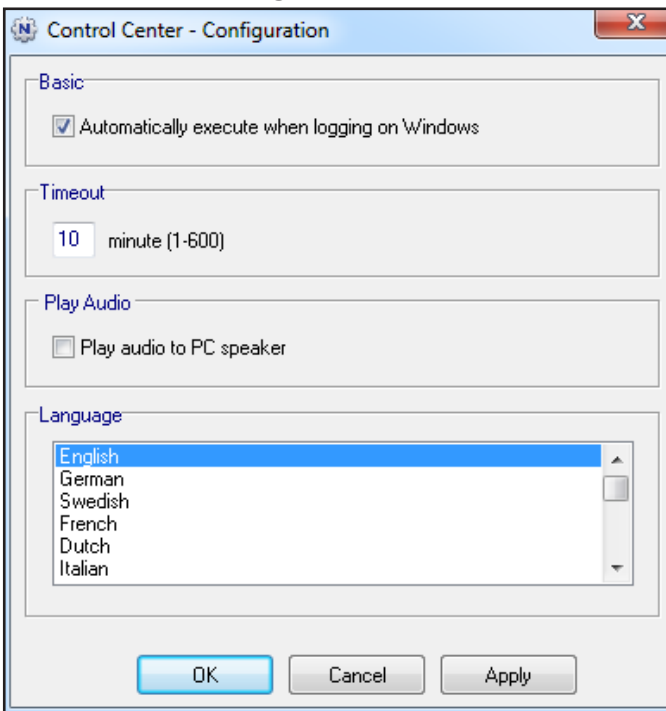
Specify the time-out to release the printer connection.

➤ **To specify the time-out:**

1. Click the **NETGEAR USB Control Center** icon .



2. Select **Tools > Configuration**.



3. In the **Timeout** field, type the number of minutes.

The time-out is the number of minutes that a computer holds its connection to the printer when the connection isn't being used.

4. Click the **OK** button.

Your settings are saved.