

Easy Internet Sharing for DSL or Cable Modems



Fast Internet Access Gateway Router

RT311

NETGEAR's RT311 Gateway Router provides the dynamic Internet connection you need for maximum productivity. Usable to 253 clients at a time, this power-packed router conducts your Internet connection so that multiple PCs can use your DSL or cable modem. Share data locally or through the Internet. You'll pay for only one IP hookup for shared broadband access, yet you can also limit Internet availability, PC by PC. On top of that, the multi-functional RT311 can be configured as a DHCP server or client. And with web-based configuration capability, getting your system up and running is a snap!

You can breathe easy—*network address translation* protects your internal network from hacker invasions. And NETGEAR's renowned engineering ensures smooth-running usability.

VERSATILE

Provides you with DSL or cable modem connection for high-speed Internet access.

ECONOMICAL

Only one Internet address is required for all your computers to share at the same time.

SECURE

NAT technology safeguards your online activities to prevent hackers from attacking your network.

ALL-INCLUSIVE

Everything you need for setup, including cables, is provided—all in one box.

FAST & EASY

Web browser-based setup gets you connected in minutes.



Help is there when you need it!

NETGEAR provides free, 24x7

telephone and e-mail technical

support in English, with selected

local language support during

office hours.

www.NETGEAR.com

NETGEAR™

NETGEAR Inc.
4500 Great America Parkway
Santa Clara, CA 95054
USA

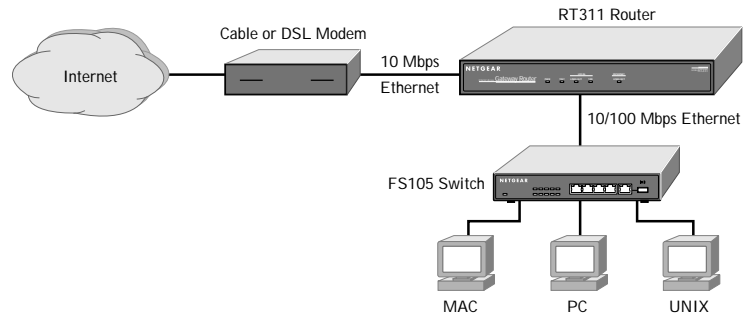
Phone: 1-888-NETGEAR
E-mail: support@NETGEAR.com
www.NETGEAR.com

In Country Phone Support
(24x7 phone support in English, local language support during office hours.)

Australia	1800-787-638	Korea	00308-11-0319
Austria	00800-06384327 (00800-0-NETGEAR)	Netherlands	0800-023-0981
Canada	1-888-NETGEAR	New Zealand	00800-1233-4566
Denmark	808-82179	Norway	800-12041
France	0800-77-17-53	Singapore	001-800-1233-4566
Germany	00800-06384327 (00800-0-NETGEAR)	Sweden	0200-298-298
Hong Kong	001-800-1233-4566	Switzerland	00800-0638-4327 (00800-0-NETGEAR)
Japan	0120-66-5402	United Kingdom	020-7216-0014
		United States	1-888-NETGEAR
		All Other Countries	+1 801-236-8499

NETGEAR™ is a trademark of NETGEAR, Inc. Windows® is a registered trademark of Microsoft Corporation. Other brand and product names are trademarks or registered trademarks of their respective holders. Information is subject to change without notice. All rights reserved.

October 2000



TECHNICAL SPECIFICATIONS

Routing Protocols

TCP/IP, RIP-1, RIP-2, DHCP, NAT,
PPTP, PPPoE

Power Adapter

12 V DC 1.2A
Localized plug for North America, Japan,
UK, Europe, Australia

Dimensions

W 253 mm (9.95")
D 181 mm (7.1")
H 35 mm (1.4")

Environmental Specifications

Operating temperature: 0 to 40°C
Operating humidity: 90% maximum relative
humidity, noncondensing

Electromagnetic Emissions

FCC Part 15 Class B
VCCI Class B
EN 55 022 (CISPR 22), Class B

Interface Specifications

LAN: 10BASE-T or 100BASE-T, RJ-45
WAN: 10BASE-T, RJ-45
Manager: RS-232, DB9F

PACKAGE CONTENTS

RT311 router unit
Power adapter
Category 5 cable (white)
Crossover cable (red)
User guide
Resource CD
Warranty card
Support card

SYSTEM REQUIREMENTS

Cable or DSL modem and Internet service
Hub or switch (10 or 10/100 Mbps)
Network card for each PC
Network software (e.g., Windows)
Internet Explorer 4.0 or higher OR
Netscape 4.0 or higher



www.NETGEAR.com

NETGEAR™