

Follow these instructions to install your NETGEAR® ReadyNAS 1500. Once installed, consult the *ReadyNAS 1500 User Manual* for instructions on configuring and operating your unit. A link to the *ReadyNAS 1500 User Manual* is on the Resource CD and on the NETGEAR support site at <http://kbserver.netgear.com>.

Note: These instructions assume the unit is using the factory default X-RAID2 disk configuration.

Estimated completion time: 20 minutes.

Note: A diskless unit requires installing disks and initializing RAID before proceeding. Go to <http://kbserver.netgear.com> for a list of supported disks. Refer to the *ReadyNAS 1500 User Manual* for instructions on installing disks and configuring RAID.

Install the RAIDar Utility

Install the RAIDar utility from the product *Resource CD*. Installation options for Windows, MAC and Linux versions of RAIDar are provided.

Connect the Unit

Connect the Ethernet cable from the LAN1 Ethernet port on the ReadyNAS 1500 to your network, and turn it on. It takes about a minute for the unit to get the IP address from the DHCP server.

Note: After it boots, the IP address assigned to the unit displays in the status area.

Log in to the Unit

1. Run the RAIDar utility. It will detect the unit.

Tip: In your DHCP server, reserve the IP address assigned for your ReadyNAS so that it always gets this address. This helps assure that mapped drives work consistently on any operating system.

2. Click **Setup** to open the FrontView management console and launch the login screen.

- Enter the default user name: **admin**
- Enter the default password: **netgear1**.

The FrontView configuration utility home page displays.



Setup Wizard Basic Configuration

The Setup Wizard guides you through setting up basic file sharing.

Note: If you choose to bypass the Setup Wizard, be sure to configure and alerts email address, change the admin password, and provide a password recovery question. Refer to the *ReadyNAS 1500 User Manual* for these instructions and on configuring additional options such as backup, streaming media servers, printers, VLAN, or user accounts and quotas.

1. In the factory default state, when logged in to the unit, Setup Wizard is enabled. Click **Next** to proceed with the wizard.
2. On the Clock tab page, modify or accept the default timezone, time, and NTP options. Click **Next** to proceed.
3. On the Alerts tab page, provide at least one email address for system alerts. Click **Next** to proceed.



4. On the Ethernet tab page, accept or change the IP address settings.

Click **Next** to proceed.

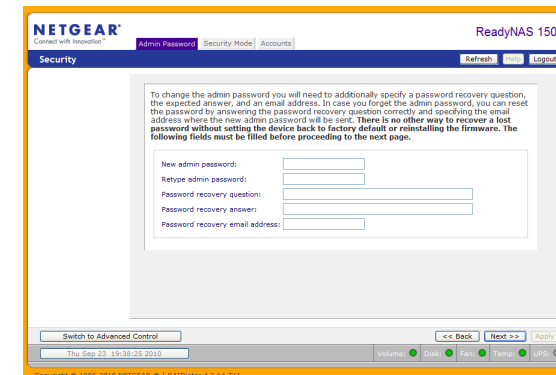
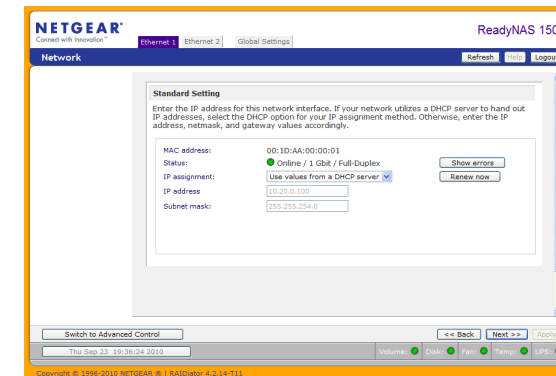
5. On the Global Settings tab page, you can modify the unit's hostname. Also, if you will use a static IP configuration, you will need to configure the gateway and DNS settings (you do not have to change these settings if you use the unit in its default DHCP configuration). Click **Next** to proceed.

6. On the Admin Password page, change the system login password, and provide a recovery question, answer, and email address. Note these changes. Click **Next** to proceed.

7. On the Security Mode tab page, accept the default option of "User" which controls access to shares based on user or group accounts. FrontView will attempt to use the first workgroup name it discovers in the network. Otherwise, it will default to "VOLUME" as the workgroup name. Specify the workgroup name you want the unit to join. Refer to the *ReadyNAS 1500 User Manual* for ACS setup instructions. Click **Next** to proceed.

8. On the Accounts page, click **Add User**. Add a new user and user password. Click **Next** to finish the wizard. Refer to the *ReadyNAS 1500 User Manual* for full instructions on setting up accounts.

This completes the basic setup. Next, you will verify that you can access shares on your ReadyNAS.



Accessing Your Shared Storage

Follow the steps below to access shares on the ReadyNAS.

Refer to the *ReadyNAS 1500 User Manual* for instructions on accessing shares from Linux or Unix workstations, drive mapping, and other file sharing options, including unique language support for file names such as those that use unicode or ideographic characters.

Note: CIFS, HTTP/S and AFP (Bonjour and ATP) file sharing protocols are enabled by default. Also supported are FTP, NFS, and Rsync, however they must be manually enabled.

Accessing Shares from a Windows PC

1. To see a share listing in Windows, either click Browse in RAIDar, or enter `\\<ip_address>` or `\\<hostname>` in the Windows Explorer address bar.

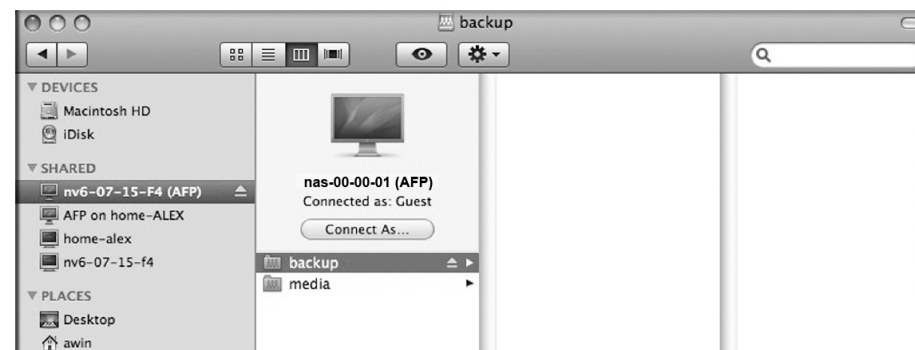


2. When prompted, enter the user name and password to connect to the ReadyNAS.. Windows Explorer will display the contents of the ReadyNAS share.



Accessing Shares from MAC OS X

1. To access the same share over AFP with OS X, open Finder and locate the ReadyNAS hostname in the SHARED section.
2. Click the hostname to display the shares.



Technical Support

After installing your device, locate the serial number on the label of your product and use it to register your product at <http://www.NETGEAR.com/register>. Registration is required before you can use the telephone support service. Registration via our website is strongly recommended.

Go to <http://kbserver.netgear.com> for product updates and Web support.

For additional information about setting up, configuring, and using your ReadyNAS, see the *User Manual*. For complete DoC please visit the NETGEAR EU Declarations of Conformity website at: http://kb.netgear.com/app/answers/detail/a_id/11621/.

Operating Tips and Precautions

Power Up/Down

Powering up the unit could take about a minute. Power down the unit by pressing the power button on the front twice. This assures an orderly shutdown. For other power down and disk spin-down options, refer to the *ReadyNAS 1500 User Manual*.

Ventilation

Four large capacity high speed disks can produce considerable heat. Be sure to install the unit so that the fan exhausts are unobstructed.

Using a UPS

An uninterruptible power supply protects your unit, and can enable automatic shut down in an orderly fashion when there is an interruption in power. The *ReadyNAS 1500 User Manual* provides instructions on using a UPS.

Redundancy and Expansion

A one-disk device has no redundancy and provides no protection from a disk failure. However, if and when you feel the need for redundancy, simply hot-add a new disk with at least the capacity of the first disk (there's no need to power off the unit). Depending on the size of the disk, within a few hours, your data volume will be fully redundant. The process occurs in the background, so access to the unit is not interrupted. Additionally, as your storage requirement grows, you can hot add more disks for "horizontal" expansion, or replace your disks with larger capacity ones, and X-RAID2 automatically and incrementally expands your storage "vertically." X-RAID2 lets you do this without reformatting your disks and shuffling your data back and forth.



This symbol was placed in accordance with the European Union Directive 2002/96 on the Waste Electrical and Electronic Equipment (the WEEE Directive). If disposed of within the European Union, this product should be treated and recycled in accordance with the laws of your jurisdiction implementing the WEEE Directive.



201-13041-01



September 2010

©2010 by NETGEAR, Inc. All rights reserved. NETGEAR and the NETGEAR logo are registered trademarks of NETGEAR, Inc. in the United States and/or other countries. Other brand and product names are trademarks or registered trademarks of their respective holders. Information is subject to change without notice.