

## NETGEAR® ReadyNAS™ 3200

Follow these instructions to install your NETGEAR® ReadyNAS™ 3200. Then, consult the *ReadyNAS 3200 User Manual* for instructions on configuring and operating your unit. A link to the *ReadyNAS 3200 User Manual* is on the *Resource CD* and on the NETGEAR support site at <http://kbserver.netgear.com>. The ReadyNAS Community forum at <http://www.readynas.com/> is a valuable resource for accessing software updates, tips, use case guidelines, and more. The instructions in this guide assume the unit is using the factory default X-RAID2 disk configuration.

Estimated completion time: 20 minutes.

**Note:** A diskless unit requires installing disks and initializing RAID before proceeding. Go to <http://kbserver.netgear.com> for a list of supported disks. Refer to the *ReadyNAS 3200 User Manual* for instructions on installing disks and configuring RAID.

## Basic Setup

Follow these steps to set up the unit. Depending on the disks installed, the unit can weigh over 80 pounds (36 kg). Get assistance as needed for moving the unit.

### First, Install the RAIDar Utility

Install the RAIDar utility from the product *Resource CD*. Windows, MAC and Linux versions of RAIDar are provided.

### Next, Connect the Unit

For initial setup, connect the LAN1 Ethernet port of the ReadyNAS to your network, and turn it on. It takes about a minute to boot. By default it get its IP address via DHCP.

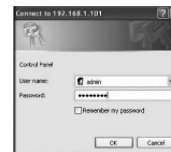
### Log in to the Unit

1. Run the RAIDar utility. It will discover units on the same subnet.

**Tip:** In your DHCP server, reserve the IP address assigned for your ReadyNAS so that it always gets this address. This helps assure that mapped drives work consistently on any operating system.

2. Click the RAIDar **Setup** button to open a FrontView browser session with the unit. The login screen will display. The default user name is **admin** and the password is **netgear1**.

The FrontView configuration utility home page displays.



## Use the Setup Wizard for Basic Configuration

The Setup Wizard will guide you through basic setup. Refer to the *ReadyNAS 3200 User Manual* for instructions on configuring options like backup, VLAN, or user accounts and quotas.

**Note:** If you choose to bypass the Setup Wizard, be sure to configure and alerts email address, change the admin password, and provide a password recovery question.



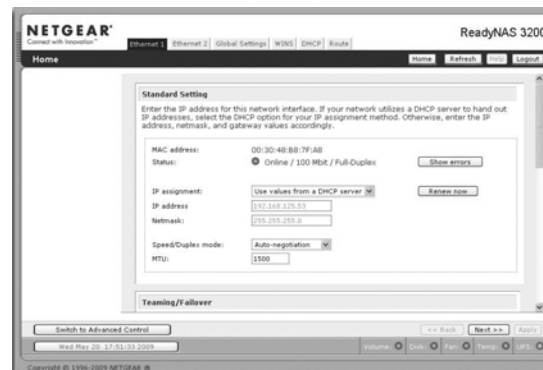
1. In the factory default state, when logged in to the unit, Setup Wizard is enabled. Click **Next** to proceed with the wizard.

2. On the Clock tab page, modify or accept the default timezone, time, and NTP options. Click **Next** to proceed.

3. On the Alerts tab page, provide at least one email address for system alerts. Click **Next** to proceed.

4. On the Ethernet 1 tab page, accept or change the IP address settings.

Click **Next** to proceed.



5. On the Global Settings tab page, you can modify the unit's hostname. Also, if you will use a static IP configuration, you will need to configure the gateway and DNS settings (you do not have to change these settings if you use the unit in its default DHCP configuration). Click **Next** to proceed.

6. On the Admin Password page, change the system login password, and provide a recovery question, answer, and email address. Note these changes. Click **Next** to proceed.



7. On the Security Mode tab page, accept the default option of “User” which controls access to shares based on user or group accounts. FrontView will attempt to use the first workgroup name it discovers in the network. Otherwise, it will default to “VOLUME” as the workgroup name. Specify the workgroup name you want the unit to join. Refer to the *ReadyNAS 3200 User Manual* for ADS setup instructions. Click **Next** to proceed.

8. On the Accounts page, click **Add User**. Add a new user and user password. Click **Next** to finish the wizard. Refer to the *ReadyNAS 3200 User Manual* for full instructions on setting up accounts.

This completes the basic setup. Next, you will verify that you can access shares on your ReadyNAS.

## Accessing Your Shared Storage

Follow the steps below to access shares on the ReadyNAS.

Note that, by default, these file sharing protocols are enabled: CIFS, AFP (advertised over both Bonjour and AFP), HTTP/S. FTP, NFS, iSCSI and Rsync are supported but are not enabled by default.

Refer to the *ReadyNAS 3200 User Manual* for instructions on accessing shares from Linux or Unix workstations, drive mapping, and other file sharing options, including unique language support for file names such as those that use unicodic or ideographic characters.

## Accessing Shares from a Windows PC

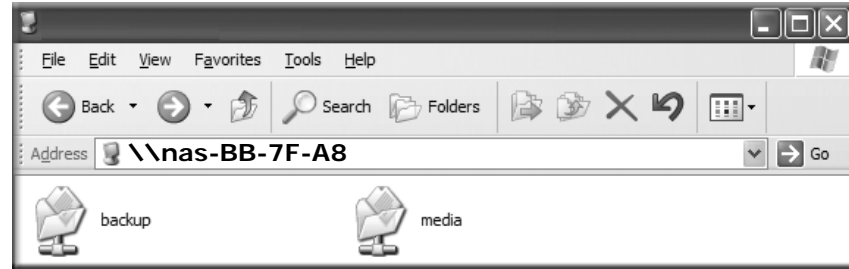
1. To see a share listing in Windows, either click Browse in RAIDar or enter `\\<ip_address>` or `\\<hostname>` in the Windows Explorer address bar.



- When prompted, enter the user name and password to connect to the ReadyNAS.



The Windows Explorer will display the contents of the ReadyNAS share.



## Accessing Shares from MAC OS X

- To access the same share over AFP with OS X, open Finder and locate the ReadyNAS hostname in the SHARED section.



- Click on the hostname to display the shares.

## Operating Tips and Precautions

Follow these guidelines to get the best performance and trouble-free operation from your unit.

## Power Up/Down

Powering up the unit could take about a minute. Power down the unit by pressing the power button on the front twice. This assures an orderly shutdown. For other power down options, refer to the *ReadyNAS 3200 User Manual*.

## Ventilation

Twelve large capacity high speed disks can produce considerable heat. Be sure to install the unit so that the fan exhausts are unobstructed.

## Using a UPS

An uninterruptible power supply protects your unit, and can enable automatic shut down in an orderly fashion when there is an interruption in power. The *ReadyNAS 3200 User Manual* provides instructions on using a UPS.

## Viewing Status Information in FrontView

The bottom row of the FrontView configuration utility provides color coded status indicators of workgroup connections, disks, the fan, temperature, and UPS (if used).



Double-click on a status light to view details about that item.

## Redundancy and Expansion

A one-disk device has no redundancy and provides no protection from a disk failure. However, if and when you feel the need for redundancy, simply hot-add a new disk with at least the capacity of the first disk (there's no need to power off the unit). Depending on the size of the disk, within a few hours, your data volume will be fully redundant. The process occurs in the background, so access to the unit is not interrupted. Additionally, as your storage requirement grows, you can hot add more disks for "horizontal" expansion, or replace your disks with larger capacity ones, and X-RAID2 automatically and incrementally expands your storage "vertically." X-RAID2 lets you do this without reformatting your disks and shuffling your data back and forth.

## Technical Support

Locate the serial number on the bottom label of your product, and use it to register your product at <http://www.NETGEAR.com/register>.

Registration on the website or over the phone is required before you can use our telephone support service. The phone numbers for worldwide regional customer support centers are on the Warranty and Support Information card that came with your product.

Go to <http://www.netgear.com/support> for product updates and Web support.



This symbol was placed in accordance with the European Union Directive 2002/96 on the Waste Electrical and Electronic Equipment (the WEEE Directive). If disposed of within the European Union, this product should be treated and recycled in accordance with the laws of your jurisdiction implementing the WEEE Directive.

© 2008, 2009 by NETGEAR, Inc. All rights reserved. NETGEAR and the NETGEAR logo are registered trademarks of NETGEAR, Inc. in the United States and/or other countries. Other brand and product names are trademarks or registered trademarks of their respective holders. Information is subject to change without notice.



201-11777-01

May 2009