



### Introducing the NETGEAR RBS1830 - Adjustable Rear Bracket Support for Select M4250 and M4350 Switches (18"-30" Rack Depths)

- Provides sturdy 4-post rack support for select M4250 and M4350 switch models
- Designed to accommodate switch depths from 350 to 432 mm (13.78 to 17 in)
- Compatible with both circular and square rack-mounting holes (#10-32 and #12-24 thread types)
- Fits rack depths ranging from 18 to 30 inches
- Single SKU (RBS1830-10000S) supports 22 different switch models across the M4250 and M4350 families
- Includes a 16-piece, multi-segment kit for robust 4-post rack installation
- Can be installed from the front of the rack alone; side and rear installation possible when accessible
- Straightforward setup with clear instructions provided in the Hardware Installation Guide (QR code included in the box)
- Hardware Installation Guide also available online: <https://www.netgear.com/support/enterprise>
- Prevents heavier switches from sagging at the rear in stationary rack deployments
- Secures equipment during transport or mobile use in OB vans, road cases, flight cases, and similar environments

## Compatible Switches

---

### M4250 Series

- M4250-26G4F-PoE++ (GSM4230UP) and M4250-26G4XF-PoE+ (GSM4230PX)
- M4250-40G8F-PoE+ (GSM4248P) and M4250-40G8XF-PoE+ (GSM4248PX)
- M4250-40G8XF-PoE++ (GSM4248UX)

### M4350 Series

- M4350-24G4XF (GSM4328) and M4350-48G4XF (GSM4352)
- M4350-16M4V (MSM4320) and M4350-24M4X4V (MSM4332)
- M4350-44M4X4V (MSM4352) and M4350-24F4X (MSM4328F)
- M4350-8X8F (XSM4316) and M4350-12X12F (XSM4324)
- M4350-24X4V (XSM4328CV) and M4350-24F4V (XSM4328FV)
- M4350-36X4V (XSM4340CV) and M4350-24X8F8V (XSM4340V)
- M4350-32F8V (XSM4340FV) and M4350-16V4C (VSM4320C)
- M4350-40F4C (XSM4344FC) and M4350-40X4C (XSM4344C)
- M4350-16C (CSM4316)

## Warranty

---

- NETGEAR RBS1830 is covered under NETGEAR Enterprise 5-year Hardware Warranty

## Technical Specifications

### List of Compatible Switches

#### M4250 Series

M4250-26G4F-PoE++ (GSM4230UP)  
 M4250-26G4XF-PoE+ (GSM4230PX)  
 M4250-40G8F-PoE+ (GSM4248P)  
 M4250-40G8XF-PoE+ (GSM4248PX)  
 M4250-40G8XF-PoE++ (GSM4248UX)

#### M4350 Series

M4350-24G4XF (GSM4328)  
 M4350-48G4XF (GSM4352)  
 M4350-16M4V (MSM4320)  
 M4350-24M4X4V (MSM4332)  
 M4350-44M4X4V (MSM4352)  
 M4350-24F4X (MSM4328F)  
 M4350-8X8F (XSM4316)  
 M4350-12X12F (XSM4324)  
 M4350-24X4V (XSM4328CV)  
 M4350-24F4V (XSM4328FV)  
 M4350-36X4V (XSM4340CV)  
 M4350-24X8F8V (XSM4340V)  
 M4350-32F8V (XSM4340FV)  
 M4350-16V4C (VSM4320C)  
 M4350-40X4C (XSM4344C)  
 M4350-40F4C (XSM4344FC)  
 M4350-16C (CSM4316)

### Compatible Racks

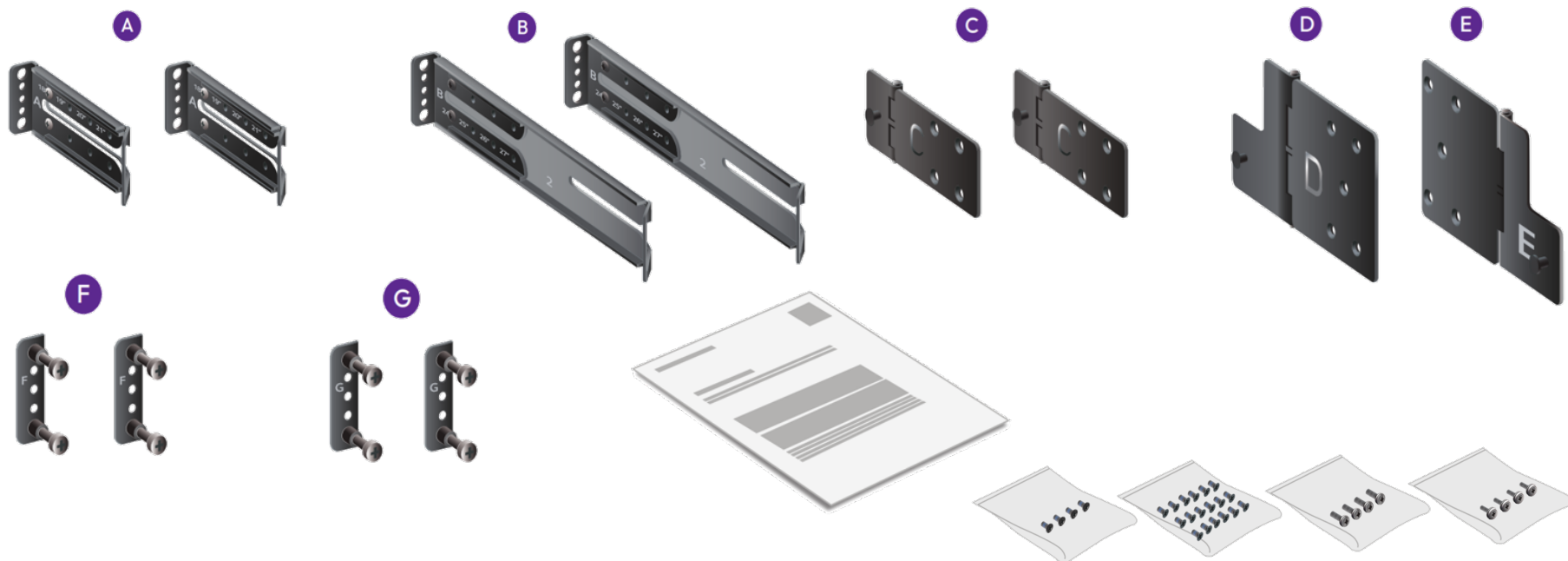
#### Racks

Circular and square rack mounting holes (#10-32 and #12-24 threaded)  
 Depth dimensions of 18 to 30 inches deep  
 Racks with front access only  
 Racks with side or rear access

# Technical Specifications

## Package Content

RBS1830 Accessory Kit	Name	Label	Use	Quantity
	Adjustable short support bracket, pre-assembled at 18 in. (45.7cm)	A	For 18-24 in. (45.7-61 cm) racks	2
	Adjustable long support bracket, pre-assembled at 24 in. (61cm)	B	For 24-30 in. (61-76.2 cm) racks	2
	1U torsion hinge	C	Left and right hinges for the 1U switches	2
	2U left torsion hinge	D	Left hinge for the 2U switches	1
	2U right torsion hinge	E	Right hinge for the 2U switches	1
	Front mount plate for #10-32 UNF thread type	F	For the rack with #10-32 screw threads (cage nuts or pre-threaded racks)	2
	Front mount plate for #12-24 UNC thread type	G	For the rack with #12-24 screw threads (cage nuts or pre-threaded racks)	2
	Mounting screws #10-32 when rear access		For securing the support bracket to #10-32 racks with rear access	4
	Mounting screws #12-24 when rear access		For securing the support bracket to #12-24 racks with rear access	4
	Small flat head black screws with blue thread locker		For securing the torsion hinges to the switch	18
	Small black screws		For securing the front mount plates to the support brackets	4



## Technical Specifications

### Selection Matrix Switch and Rack

Use the following table to select the correct parts:	Rack Depth	Switch Height	Adjustable Support Brackets	Hinges	Front Mount Plates
	18-24 in. (45.7-61 cm)	1RMU	A (you can set the desired length from 18 to 24 in.)	C	F or G (front access)
	24-30 in. (61-76.2 cm)	1RMU	B (you can set the desired length from 24 to 30 in.)	C	F or G (front access)
	18-24 in. (45.7-61 cm)	2RMU	A (you can set the desired length from 18 to 24 in.)	D + E	F or G (front access)
	24-30 in. (61-76.2 cm)	2RMU	B (you can set the desired length from 24 to 30 in.)	D + E	F or G (front access)

### Hardware Installation Guide

You can download the guide here: <https://www.netgear.com/support/enterprise>

### NETGEAR Enterprise Warranty and Support

NETGEAR Enterprise Warranty	5-year
Support	Free chat support, and Fast RMA Replacement once the faulty unit is received

### Ordering Information

NETGEAR RBS1830 - Adjustable Rear Bracket Support for Select M4250 and M4350 Switches used in 18"-30" Rack Depths

Worldwide	RBS1830-10000S
-----------	----------------

NETGEAR, the NETGEAR Logo are trademarks of NETGEAR, Inc. in the United States and/or other countries. Other brand names mentioned herein are for identification purposes only and may be trademarks of their respective holder(s). Information is subject to change without notice. © 2026 NETGEAR, Inc. All rights reserved.

NETGEAR, Inc., 1-888-NETGEAR (638-4327), E-mail: info@NETGEAR.com, www.NETGEAR.com

DS-RBS1830-8Apr26