

# Quick Start

## NIGHTHAWK® M5

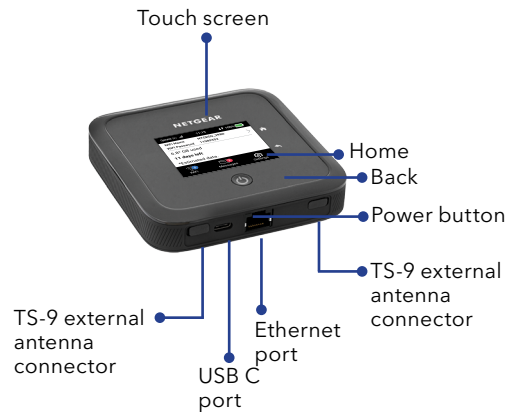
5G Mobile Router

**NETGEAR®**

### What's in the box

- Nighthawk M5 5G Mobile Router
- Battery cover
- Battery
- USB Type-C cable
- Quick Charge AC power adapter
- Quick Start Guide

### Get to know your Mobile Router



### Install the SIM card and battery

Your mobile router requires a SIM card to connect to your mobile provider's network. To get a valid and provisioned SIM card, contact your mobile provider. For information about contacting mobile providers and information you might need to provide your mobile provider, use the QR code or visit <https://www.netgear.com/mobile-setup>.

Do not use a tool, pen, or paperclip to insert or remove the SIM card. Doing so might cause damage to your mobile router that is not covered by the warranty.



1. Gently insert the SIM card into the slot.
  2. Insert the battery.
  3. Install the back cover.
- The battery is partially charged. To fully charge

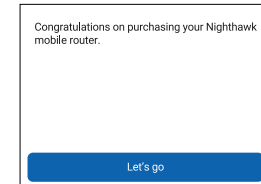


it, connect the USB cable to the mobile router and then plug it into either a laptop or the provided Quick Charge AC power adapter

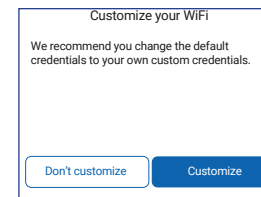
### Set up your Mobile Router

1. Press and hold the **Power** button for two seconds.

To better safeguard your network, the first time you turn on your mobile router, you are asked to set up your login credentials.

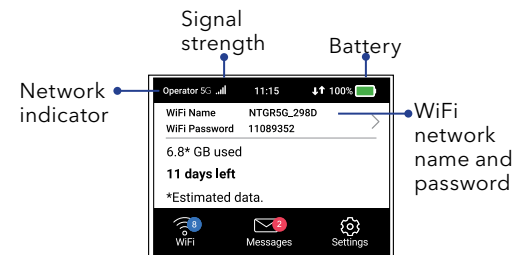


2. Follow the onscreen instructions to customize your mobile router settings.



### Home screen

The Home screen displays the mobile router's WiFi network name and password. The network indicator lets you know which wireless network you are connected to.



**Note:** The appearance of your home screen depends on the model.

May 2022



201-26415-03

#### NETGEAR INTERNATIONAL LTD

Floor 1, Building 3,  
University Technology Centre  
Curraheen Road, Cork,  
T12EF21, Ireland

#### NETGEAR, Inc.

350 East Plumeria Drive  
San Jose, CA 95134, USA

© NETGEAR, Inc., NETGEAR and the NETGEAR Logo are trademarks of NETGEAR, Inc. Any non-NETGEAR trademarks are used for reference purposes only.

## Connect to the Internet

**Note:** The mobile router's Home screen displays the WiFi network name and password. The screen goes dark to save power. Press and release the **Power** button to wake the screen.

### On your laptop or other WiFi device

1. Open your WiFi network connection manager.
2. Find your mobile router's WiFi network name (NTGR-XXXX) and connect.
3. Enter your mobile router's WiFi password.
4. Launch your Internet browser.

**Note:** The battery and the mobile router might become warm during operation. This is normal. If you use your device as a fixed wireless router, remove the battery and power the router using the provided Quick Charge AC power adapter. This prolongs battery life and reduces heating.

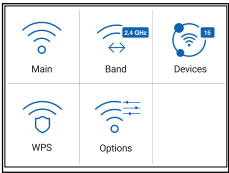
ONLY use the provided Quick Charge AC power adapter for using the mobile router without a battery.

## LCD WiFi Manager

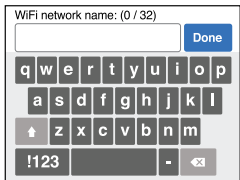
You can manage the WiFi network and change the WiFi settings from the LCD screen.

### Change the WiFi network name and password

1. On the home screen, tap the **WiFi** icon.



2. Tap **WiFi** and then select from the available WiFi networks.



3. Tap **WiFi Name** and enter your changes.
4. Tap **WiFi Password** and enter your changes.

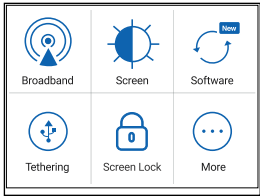
### Change the WiFi band

1. On the home screen, tap the **WiFi** icon.
2. Tap **Band**.
3. Select the 2.4 GHz, 5 GHz, or dual WiFi band.

## LCD Settings

### View or change the settings

On the home screen, tap the **Settings** icon.



## WiFi Manager

You can use a browser to view and change the mobile router settings.

### Log In

1. On your mobile router, go to the LCD Settings screen, tap the **More** icon. Then tap **Device Information** and look for the WiFi Manager URL.
2. On the WiFi device that is connected to your mobile router, type the WiFi Manager URL in the browser bar.
3. Log in as administrator. The default login is printed on the product label.



## Support and Community

Visit [netgear.com/support](https://netgear.com/support) to get your questions answered and access the latest downloads.

You can also check out our NETGEAR Community for helpful advice at [community.netgear.com](https://community.netgear.com).

For the best experience, we recommend using only the NETGEAR battery, USB type-C cable, and AC power adapter that came with your mobile router.

## Regulatory and Legal

For regulatory compliance information including the EU Declaration of Conformity, visit <https://www.netgear.com/about/regulatory/> to access the full user manual and to download firmware updates.

See the regulatory compliance document before connecting the power supply.

For NETGEAR's Privacy Policy, visit <https://www.netgear.com/about/privacy-policy/>.

By using this device, you are agreeing to NETGEAR's Terms and Conditions at <https://www.netgear.com/about/terms-and-conditions/>. If you do not agree, return the device to your place of purchase within your return period.

## Download the NETGEAR Mobile app



Use the NETGEAR Mobile app to change your WiFi network name and password. You can also use it to play and share media, and enable the travel router feature.

1. Connect your mobile device to the Internet.
2. To download the NETGEAR Mobile app use the QR code. The link takes you to the app in the Apple Store or Google Play Store, depending on your mobile device.

