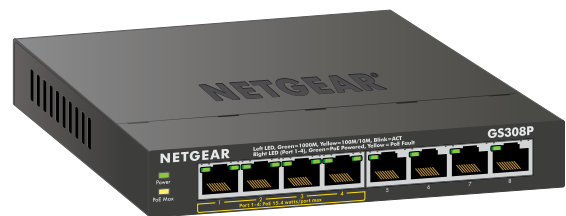


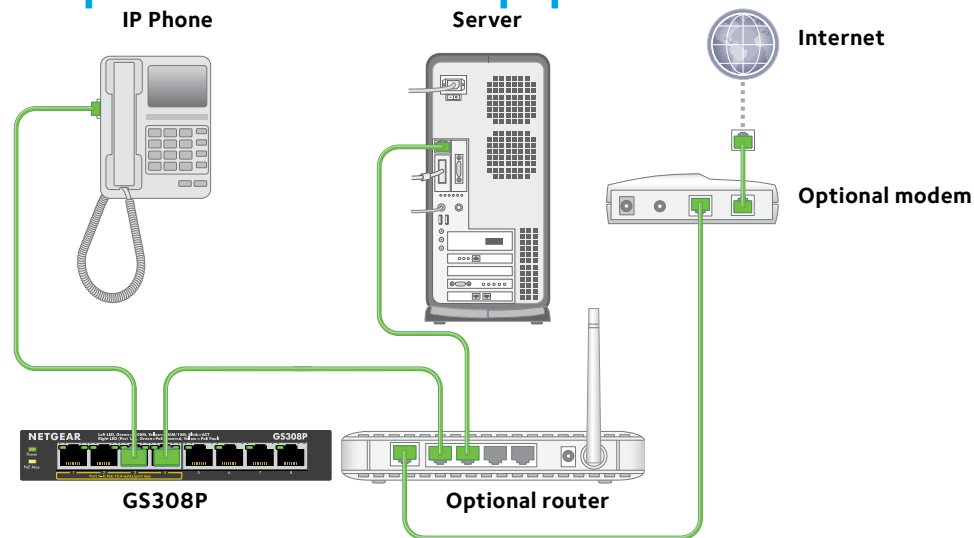
# Installation

## 8-Port Gigabit Switch with 4-Port PoE

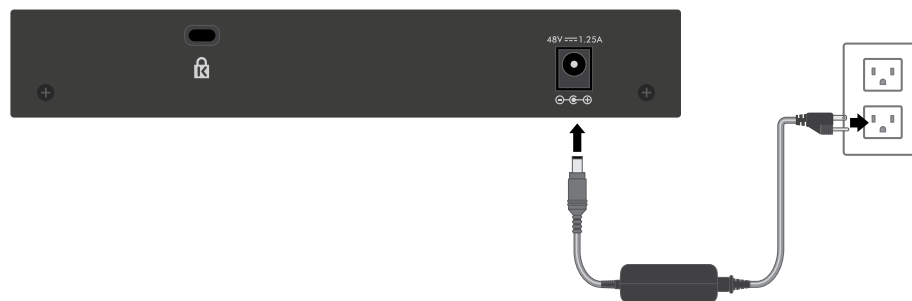
GS308P



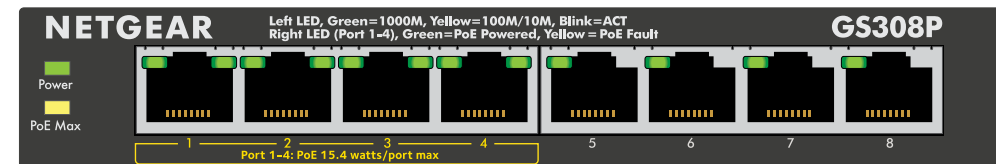
### Step 1. Connect the equipment.



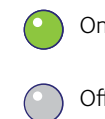
### Step 2. Connect to power.



### Step 3. Check the status.



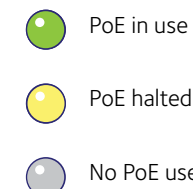
#### Power LED



On

Off

#### Right PoE LEDs (Ports 1-4)

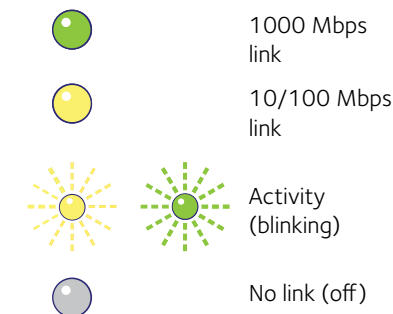


PoE in use

PoE halted

No PoE use (off)

#### Left Port LEDs (Ports 1-8)



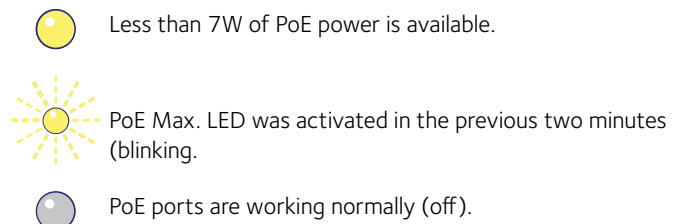
1000 Mbps link

10/100 Mbps link

Activity (blinking)

No link (off)

#### PoE Max LED



Less than 7W of PoE power is available.

PoE Max. LED was activated in the previous two minutes (blinking).

PoE ports are working normally (off).

NETGEAR®

## Specifications

Specification	Description
Network interface	RJ-45 connector for 10BASE-T, 100BASE-TX, or 1000BASE-T
Network cable	Category 5 (Cat 5) or better Ethernet cable
Ports	8
Power adapter	48V @ 1.25 A DC input
Power consumption	60W max.
PoE power budget	Ports 1-4: 15.4W maximum per PoE port, up to 53W total PoE power For more information, see <a href="#">PoE Specifications</a> .
Weight	0.46 kg (1.01 lb)
Dimensions (W x D x H)	158 mm x 101 mm x 26 mm 6.2 in. x 4 in. x 1.02 in.
Operating temperature	0–40°C (32–104°F)
Operating humidity	10%–90% relative humidity, noncondensing
Electromagnetic compliance	CE Class A, FCC 15 Class A, CCC
Safety agency approvals	CE mark, CB, CCC

## PoE Specifications

The maximum power that the GS308P can deliver to all Powered Devices is 53 Watts total, with a maximum power to each port of 15.4 Watts.

Supplied power is prioritized in ascending port order up to the total power budget of the device. If the power requirements for the attached devices exceeds the total power budget of the switch, the device on the highest numbered port will be disabled to ensure that the devices connected to the higher priority, lower numbered ports are supported first.

It is important to note that just because a device is listed as an 802.3af PoE Powered Device does not necessarily mean that it requires the maximum power limit of the specification. Many devices require less, allowing all four PoE ports to be active simultaneously.

## Support

Thank you for selecting NETGEAR products.

After installing your device, locate the serial number on the label of your product and use it to register your product at <https://my.netgear.com>.

You must register your product before you can use NETGEAR telephone support. NETGEAR recommends registering your product through the NETGEAR website.

For product updates and web support, visit <http://support.netgear.com>.

NETGEAR recommends that you use only the official NETGEAR support resources.

For the current EU Declaration of Conformity, visit [http://support.netgear.com/app/answers/detail/a\\_id/11621/](http://support.netgear.com/app/answers/detail/a_id/11621/).

For regulatory compliance information, visit <http://www.netgear.com/about/regulatory/>.

See the regulatory compliance document before connecting the power supply.



201-19408-03

September 2015

**NETGEAR, Inc.**  
350 East Plumeria Drive  
San Jose, CA 95134, USA

© NETGEAR, Inc., NETGEAR and the NETGEAR Logo are trademarks of NETGEAR, Inc. Any non-NETGEAR trademarks are used for reference purposes only.