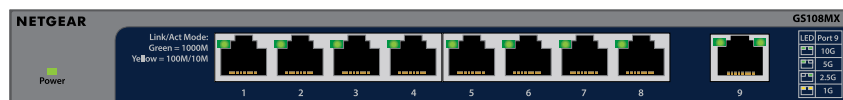


Installation Guide

8-port Gigabit Ethernet Unmanaged Switch with 1 Dedicated 10G SFP+ Port Model GS108X



8-port Gigabit Ethernet Unmanaged Switch with 1 Dedicated 10G/Multi-Gigabit Port Model GS108MX



Package contents

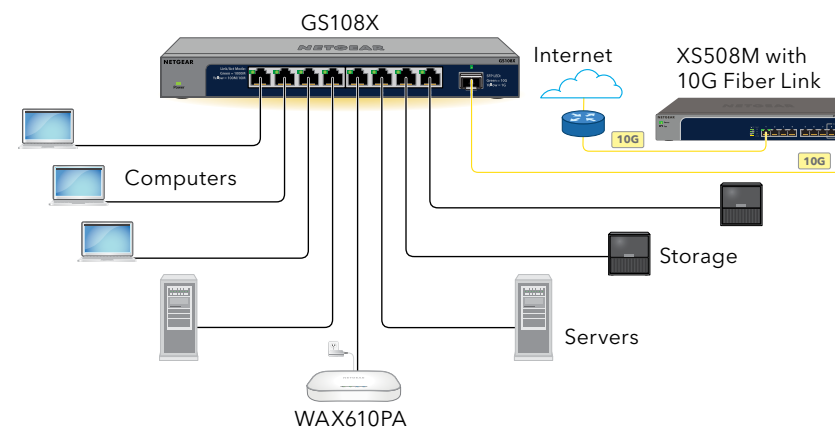
- NETGEAR 8-port Gigabit Ethernet Unmanaged Switch with 1 Dedicated 10G SFP+ Port (Model GS108X) or NETGEAR 8-port Gigabit Ethernet Unmanaged Switch with 1 Dedicated 10G/Multi-Gigabit Port (Model GS108MX)
- Power adapter (power plug varies by region)
- Wall-mount installation kit
- Rubber feet
- Installation Guide

1. Register the switch

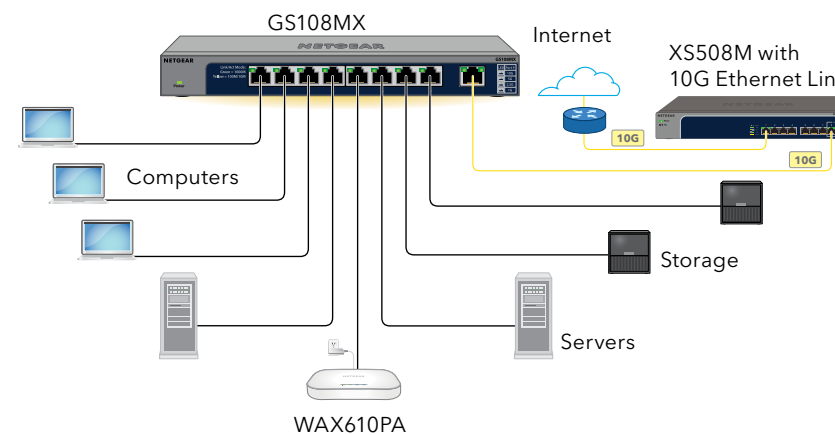
1. From a computer or mobile device that is connected to the Internet, visit my.netgear.com.
2. Log in to your NETGEAR account.
NOTE: If you don't have a free NETGEAR account, you can create one. The Your Registered Products page displays.
3. Click the **REGISTER NEW PRODUCT** button.
4. In the **SERIAL NUMBER** field, type the serial number of your switch. The serial number is 13 digits long. It is printed on the switch label.
5. From the **PURCHASE DATE** menus, select the date that you purchased the switch.
6. Click the **REGISTER** button.
Your switch is registered to your NETGEAR account.
A confirmation email is sent to your NETGEAR account email address.

2. Connect the switch

Sample GS108X connections



Sample GS108MX connections



NOTE: We recommend that you use a Category 6a (Cat 6a) cable or higher-rated cable for 10-Gigabit Ethernet connections, and a Category 5e (Cat 5e) cable or higher-rated cable for other Gigabit Ethernet connections.

This switch is designed for indoor use only. If you want to connect it to a device located outdoors, the outdoor device must be properly grounded and surge protected, and you must install an Ethernet surge protector inline between the switch and the outdoor device. Failure to do so can damage the switch.

WARNING: Before connecting this switch to outdoor cables or devices, see <https://kb.netgear.com/000057103> for safety and warranty information.

Power LED

- On
- Off

Gigabit Ethernet port LEDs for ports 1 through 8

- 1G link. Port LED lights green. Blinking LED indicates traffic activity.
- 100M/10M link LED lights yellow. Blinking LED indicates traffic activity.
- No link. Port LED off.

GS108X SFP+ LED for port 9

- 10G link (LED lit green).
- 1G link (LED lit yellow).
- No link. Port LED off.

GS108MX Multi-Gigabit Ethernet LEDs for port 9

- ■ 10G link (both port LEDs lit green). Both port LEDs blinking green indicates traffic activity.
- ■ 5G link (left port LED on, right port LED off). Left port LED blinking indicates traffic activity.
- ■ 2.5G link (left port LED off, right port LED on). Right port LED blinking indicates traffic activity.
- ■ 1G link (both port LEDs lit yellow). Both port LEDs blinking yellow indicates traffic activity.
- ■ No link (both port LEDs off).



Mount the switch on a wall

We recommend that you use the wall-mount screws that are included. The screws are 0.12 in. (3 mm) in diameter, 0.78 in. (20 mm) in length.

1. Locate the two mounting slots on the bottom panel of the switch.
2. Mark and drill two holes 4.25 in. (108 mm) apart, center-to-center in the wall where you want to mount the switch.

Use a 3/16" (4.7mm) drill bit.

The switch must be mounted horizontally with the ports on the bottom.

3. Insert the supplied anchors into the wall and tighten the screws with a No. 2 Phillips screwdriver.


Leave about 0.15 in. (4 mm) of each screw protruding from the wall to fit into the holes on the bottom panel.

4. Position the switch so that the mount holes are directly over the screws, and slide the switch down until the upper edge of each mount hole sits directly on the screw, attaching the switch securely to the wall.

Technical specifications

Specification	Description
Ethernet network interfaces	Ports 1-8: Gigabit Ethernet with RJ-45 connectors that support 100BASE-TX and 1000BASE-T
Uplink port	Port 9 GS108X: 1G/10G SFP+ Port 9 GS108MX: 10G/Multi-Gigabit (10G/5G/2.5G/1G)
Fanless	0 dBA
Power adapter	12V @ 1.5A DC input
Power consumption	4.63W
Dimensions (W x D x H)	9.3 x 4.0 x 1 in. (236 x 102 x 27 mm)
Weight	1.27 lb (575 g)
Operating temperature	32 to 104° F (0 to 40° C)
Operating humidity	10 to 90% relative humidity, noncondensing
Maximum operating altitude	10,000 ft. (3,000 m)
Storage temperature	-4 to 158° F (-20 to 70° C)
Storage humidity	5 to 95% relative humidity, noncondensing
Maximum storage altitude	10,000 ft. (3,000 m)
Electromagnetic certifications and compliance	FCC class B device, EU-RoHS
Safety certifications	CB, CE class B, VCCI class B, C-Tick/RCM class B

GS108X Supported Modules

Model	Description
1G Fiber SFP Transceivers	
AGM731F	NETGEAR 1000BASE-SX SFP LC Transceiver (multimode, 1000m OM4, 550m OM3 50/125µm, 275m OM2/OM1 62.5/125µm)
AGM732F	NETGEAR 1000BASE-LX SFP LC Transceiver (single mode, 10km 9/125µm)
1G Copper SFP Transceiver	
 CAUTION:	The SFP+ port on the GS108X supports 10G on fiber modules only. It does not support 10G copper modules and will not pass traffic through a 10G copper module. However, 1G copper modules are supported.
AGM734	NETGEAR 1000BASE-T SFP RJ45 Transceiver
10G SFP+ DAC	
AXC761	NETGEAR 10G Direct Attach SFP+ to SFP+ 1 Meter Passive DAC Cable
AXC763	NETGEAR 10G Direct Attach SFP+ to SFP+ 3 Meter Passive DAC Cable
10G Fiber SFP+ Transceiver	
AXM761	NETGEAR 10GBASE-SR SFP+ LC Transceiver (multimode, 550m OM4, 300m OM3 50/125µm, 33m OM2/OM1 62.5/125µm)
AXM762	NETGEAR 10GBASE-LR SFP+ LC Transceiver (single mode, 10km 9/125µm)
AXM764	NETGEAR 10GBASE-LR LITE SFP+ LC Transceiver (single mode, 2km 9/125µm)

Support and Community

Visit netgear.com/support to get your questions answered and access the latest downloads.

You can also check out our NETGEAR Community for helpful advice at community.netgear.com.

Regulatory and Legal

Si ce produit est vendu au Canada, vous pouvez accéder à ce document en français canadien à netgear.com/support/download/. (If this product is sold in Canada, you can access this document in Canadian French at netgear.com/support/download/.)

For regulatory compliance information including the EU Declaration of Conformity, visit netgear.com/about/regulatory/. See the regulatory compliance document before connecting the power supply. For NETGEAR's Privacy Policy, visit netgear.com/about/privacy-policy. By using this device, you are agreeing to NETGEAR's Terms and Conditions at netgear.com/about/terms-and-conditions. If you do not agree, return the device to your place of purchase within your return period.

Do not use this device outdoors. If you connect cables or devices that are outdoors to the switch, see kb.netgear.com/000057103 for safety and warranty information.

Applicable to 6 GHz devices only: Only use the device indoors. The operation of 6 GHz devices is prohibited on oil platforms, cars, trains, boats, and aircraft, except that operation of this device is permitted in large aircraft while flying above 10,000 feet. Operation of transmitters in the 5.925-7.125 GHz band is prohibited for control of or communications with unmanned aircraft systems.

NETGEAR, Inc.
350 East Plumeria Drive
San Jose, CA 95134, USA

NETGEAR INTERNATIONAL LTD
Floor 6, Penrose Two,
Penrose Dock, Cork, T23 YY06, Ireland