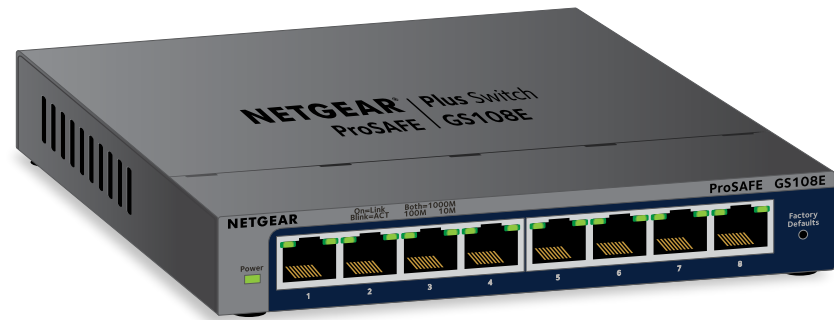


Installation

ProSAFE Plus 8-Port Gigabit Switch

Model GS108Ev3

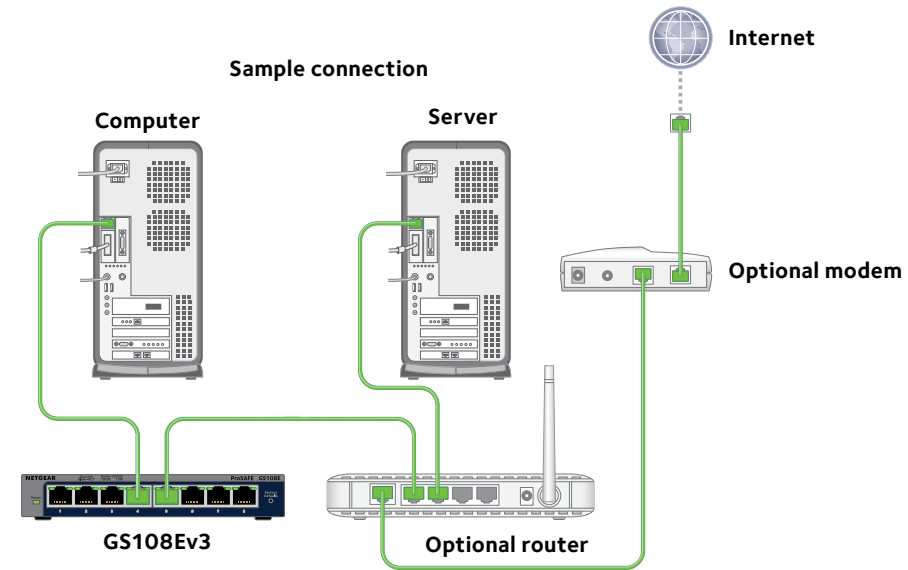


Package Contents

- ProSAFE® Plus 8-Port Gigabit Switch
- Power adapter (localized to country of sale)
- Wall-mount kit
- Resource CD
- Installation guide (this document)

NETGEAR

Connect the Switch to Your Network



1. Connect the switch.
2. Connect your devices to the ports on the switch.
3. Connect the power adapter to the switch and plug the power adapter into an electrical outlet.

The Power LED on the front of the switch lights and the port LEDs for connected devices light.

Access the Switch

ProSAFE Plus switches are plug-and-play, so you can use them without configuration. You can configure your switch using the local browser-based management interface or by using ProSAFE Plus Utility on a Windows-based computer. To use the local browser interface, you must know the IP address of the switch.

To find the firmware, documentation, software, or other files, visit downloadcenter.netgear.com. For information about updating the firmware, see the user manual.

Find the IP Address of the Switch Using the NETGEAR Insight App

1. On your iOS or Android mobile device, visit the App store or Google Play, search for NETGEAR Insight, and download the latest app.



2. Connect a port on the switch to a LAN port on a router that is connected to the Internet.
3. Connect your mobile device to the WiFi network of the router or access point that the switch is connected to.
4. Open the NETGEAR Insight app.
5. If you did not set up a NETGEAR account, tap **CREATE NETGEAR ACCOUNT** and follow the onscreen instructions.
6. To log in to your NETGEAR account, tap **LOG IN** and enter your credentials.

The NETGEAR Insight app can discover the switch and display its IP address.

Note: When configuring your GS108Ev3 switch, we recommend that you use a computer.

Find the IP Address of the Switch Using the NETGEAR Discovery Tool

The NETGEAR Switch Discovery Tool lets you discover the switch in your network and access the local browser interface of the switch from a Mac or a 64-bit Windows-based computer. Download the Switch Discovery Tool by visiting netgear.com/support/product/gs108ev3.aspx#download.

Web Browser Access

1. If you are configuring the switch off-network, record your computer's TCP/IP configuration settings, and then configure the computer with a static IP address of 192.168.0.210 and with 255.255.255.0 as the subnet mask.

Note: If you are unsure how to do this, visit netgear.com/support and search for **Static IP address on computer**.
2. Open a web browser and enter the IP address of the switch.
If the switch is off-network or connected to a network with no DHCP server (such as a router), use the switch's default IP address, <http://192.168.0.239>. If the switch is connected to a network with a DHCP server, use the IP address that the DHCP server assigned to the switch.
If you are unsure how to determine the IP address of the switch, you can use the NETGEAR Insight app, ProSAFE Plus Utility, or NETGEAR Switch Discovery Tool.
3. Enter the password.
The default password is **password**.
4. Click the **Login** button.
You can now configure additional options for the switch in the local browser interface.
5. When you finish configuring an off-network switch, return your computer to its original TCP/IP settings and connect the switch to your network using an Ethernet cable.

ProSAFE Plus Utility Access

The ProSAFE Plus Utility runs on Windows-based computers. You can use the utility to find the switch's IP address and configure the switch. The utility is on the resource CD that came with the switch. You can visit www.netgear.com/support/product/PCU to download the latest utility.

➤ To install the ProSAFE Plus Utility from the resource CD:

1. Insert the resource CD into a computer that is connected to the switch.
2. Click the **Install ProSAFE Plus Utility** link and follow the prompts to install the program.

The utility is installed in the program directory of your computer and a **ProSAFE Plus Utility** icon is placed on your desktop.

➤ To configure the switch:

1. Double-click the **ProSAFE Plus Utility** icon.
The configuration home screen displays a list of plus switches that it discovers on the local network.
2. Select the switch that you want to configure.
You are asked to enter the password for the switch.
3. Enter the switch's password.
The switch's default password is password.
4. Use the utility to configure the switch.
For a description of ProSAFE Plus features, see the *ProSAFE Plus Switch Configuration Utility User Guide*. You can access the user guide through links on the **Help** tab of the utility or on the resource CD.

Note: If you encounter an installation problem due to the firewall, Internet security, or antivirus programs or you cannot discover the switch when you use NETGEAR Discovery Tool or ProSAFE Plus Utility, temporarily disable all of these. After you complete installation and finish configuration settings, re-enable the security services on your computer.

Specifications

Specification	Description
Network interface	RJ-45 connector for 10BASE-T, 100BASE-TX, or 1000BASE-T
Network cable	Category 5e (Cat 5e) or better Ethernet cable
Ports	8
Power adapter	12V @ 0.5 A DC input
Power consumption	4.45W max.
Weight	1.12 lb (0.508 kg)
Dimensions (W x D x H)	6.2 in. x 4 in. x 1.14 in. (158 mm x 101 mm x 29 mm)
Operating temperature	32–104° F (0–40° C)
Operating humidity	10%–90% relative humidity, noncondensing

Support

Thank you for purchasing this NETGEAR product. You can visit www.netgear.com/support to register your product, get help, access the latest downloads and user manuals, and join our community. We recommend that you use only official NETGEAR support resources.

Si ce produit est vendu au Canada, vous pouvez accéder à ce document en français canadien à <http://downloadcenter.netgear.com/other/>. (If this product is sold in Canada, you can access this document in Canadian French at <http://downloadcenter.netgear.com/other/>.)

For the current EU Declaration of Conformity, visit <http://kb.netgear.com/11621>.

For regulatory compliance information, visit <http://www.netgear.com/about/regulatory/>.

See the regulatory compliance document before connecting the power supply.



201-18071-02



NETGEAR INTL LTD
Building 3, University Technology Centre
Curraheen Road, Cork, Ireland

NETGEAR, Inc.
350 East Plumeria Drive
San Jose, CA 95134, USA

© NETGEAR, Inc., NETGEAR and the NETGEAR Logo are trademarks of NETGEAR, Inc. Any non-NETGEAR trademarks are used for reference purposes only.

January 2018