

Reset the Configuration to Default Settings

This quick start guide provides information how to reset the ProSafe Wireless-N 8-Port Gigabit VPN Firewall FVS318N.



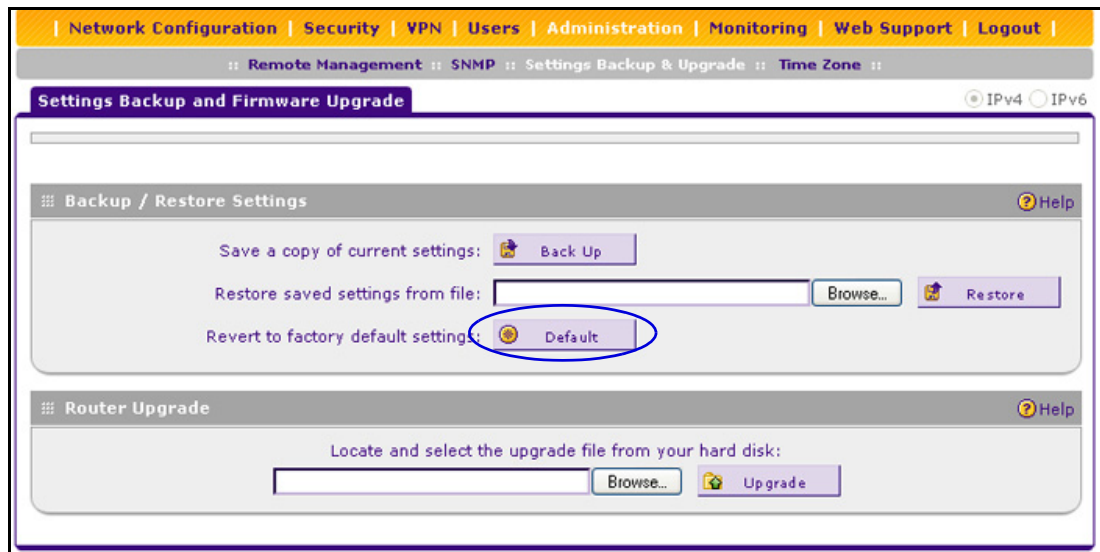
WARNING:

When you press the hardware factory default Reset button or click the software Default button, the wireless VPN firewall settings are erased. All firewall rules, VPN policies, LAN and WAN settings, and other settings are lost. Back up your settings if you intend on using them.

Tip: If your wireless VPN firewall's IP address has been changed and you do not know the current IP address but do not want to revert to the factory default settings and lose your configuration settings, you can reboot the wireless VPN firewall and use a sniffer to capture packets sent during the reboot. Look at the ARP packets to locate the wireless VPN firewall's LAN interface address.

➤ **To reset the wireless VPN firewall to the original factory default settings, use one of the following two methods:**

- Press the factory default **Reset** button on the rear panel of the wireless VPN firewall and hold the button for about 8 seconds until the Test LED turns on and begins to blink (about 30 seconds). To restore the factory default settings when you do not know the administration password or IP address, you need to use the factory default Reset button method.
- Use the Default button on the Settings Backup and Firmware Upgrade screen:
 - a. Select **Administration > Settings Backup and Firmware Upgrade**. The Settings Backup and Firmware Upgrade screen displays:



b. Click the **Default** button.

The wireless VPN firewall reboots. During the reboot process, the Settings Backup and Firmware Upgrade screen might remain visible, or a status message with a counter might show the number of seconds left until the reboot process is complete. The reboot process takes about 165 seconds. (If you can see the unit: The reboot process is complete when the Test LED on the front panel goes off.)

Note: After rebooting with factory default settings, the wireless VPN firewall's password is **password**, and the LAN IPv4 address is **192.168.1.1**. For more information about the default settings, see Appendix A, "Default Settings and Technical Specifications," in the *Reference Manual*.
