

# Copper Gigabit ports

boost your network instantly



## 10/100/1000 Mbps Fast Ethernet Switches

**FS510T FS518T**

Copper Gigabit ports in **NETGEAR**'s Fast Ethernet switches provide you with a fast and easy way to move up to Gigabit speeds. Increase your network performance in a flash without the cost and hassle of fiber cables. Maintain your network infrastructure, including installed cabling, and desktop software and hardware. **NETGEAR**'s FS510T and FS518T switches, with Plug and Play installation, deliver the power of Copper Gigabit Ethernet over copper to speed up server and backbone access for your small business or branch office.

### **CAPABLE**

Two copper Gigabit uplinks allow multiple clients to simultaneously access the server or the backbone network at 1000 Mbps—without creating a bottleneck.

### **ACCESSIBLE**

Eight or sixteen switched 10/100 Mbps ports provide dedicated 10 or 100 Mbps bandwidth for connecting one or multiple PCs, servers, and hubs. In full-duplex mode, each port supports up to 200 Mbps of throughput.

### **SAVVY**

Every port automatically senses the proper speed and duplex mode.

### **LUCID**

Ample 10/100 and 100/1000 Mbps Link LEDs are built into the RJ-45 ports, providing you with clear network status.

### **SELF-RELIANT**

Once powered on, these units start operating with no configuration required.

### **CONVENIENT**

Built into a sturdy, 13-inch metal case, these units can be mounted in a standard 19-inch rack.



Help is there when you need it!

NETGEAR provides free, 24x7

telephone and e-mail technical

support in English with selected

local language support during

office hours.

[www.NETGEAR.com](http://www.NETGEAR.com)

**NETGEAR™**

**NETGEAR Inc.**

4500 Great America Parkway  
 Santa Clara, CA 95054  
 USA

Phone: 1-888-NETGEAR  
 E-mail: support@NETGEAR.com  
 www.NETGEAR.com

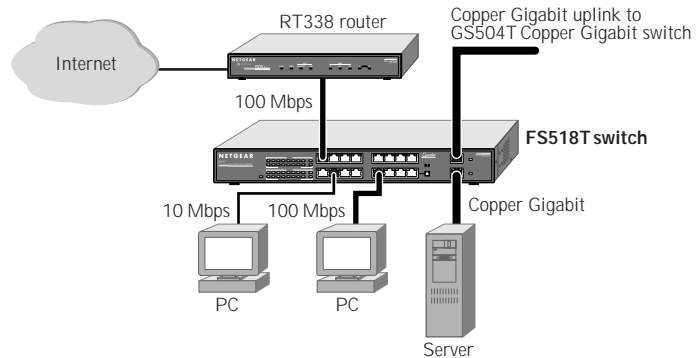
**In Country Phone Support**

(24x7 phone support in English, local language support during office hours.)

Australia	1800-787-638	Korea	00308-11-0319
Austria	00800-06384327 (00800-0-NETGEAR)	Netherlands	0800-023-0981
Canada	1-888-NETGEAR	New Zealand	00800-1233-4566
Denmark	808-82179	Norway	800-12041
Finland	0800-111-036	Singapore	001-800-1233-4566
France	0800-77-17-53	Sweden	0200-298-298
Germany	00800-06384327 (00800-0-NETGEAR)	Switzerland	00800-0638-4327 (00800-0-NETGEAR)
Hong Kong	001-800-1233-4566	United Kingdom	020-7216-0014
Japan	0120-66-5402	United States	1-888-NETGEAR
		All Other Countries	+1 801-236-8499

NETGEAR™ is a trademark of NETGEAR, Inc. Windows® is a registered trademark of Microsoft Corporation. Other brand and product names are trademarks or registered trademarks of their respective holders. Information is subject to change without notice. All rights reserved.

October 2000

**TECHNICAL SPECIFICATIONS****FS510T****Network Ports**

10/100 Mbps twisted-pair  
 RJ-45 ports: 8  
 100/1000 Mbps twisted-pair  
 RJ-45 ports: 2

**Performance (64 byte packets)**

Switching fabric: 7.2 gigabit per sec  
 10/100 buffer memory:  
 4 MB for 8 ports  
 Gigabit buffer memory:  
 4 MB for 2 ports  
 Forward rate (10 Mbps port): 14,800 packet per sec  
 Forward rate (100 Mbps port): 148,000 packet per sec  
 Forward rate (1000 Mbps port): 1,480,000 packet per sec  
 Latency (10 to 100 Mbps): 80 usec max  
 Latency (100 to 1000 Mbps): 8 usec max  
 MAC addresses: 8,000

**AC Power**

29 W  
 Auto-sensing 100 to 240V, 50/60 Hz  
 Localized power cord for North America, Japan, UK, Europe, Australia

**Standards Compliance**

IEEE 802.3i 10BASE-T Ethernet  
 IEEE 802.3u 100BASE-TX Fast Ethernet  
 IEEE 802.3ab 1000BASE-T Gigabit Ethernet

**Status LEDs**

Unit: power  
 Per network port: link, activity, full duplex/collision

**Dimensions**

W 330 mm (13")  
 D 207 mm (8")  
 H 43 mm (1.7")

**FS518T****Network Ports**

10/100 Mbps twisted-pair  
 RJ-45 ports: 16  
 100/1000 Mbps twisted-pair  
 RJ-45 ports: 2

**Performance (64 byte packets)**

Switching fabric: 9.6 gigabit per sec  
 10/100 buffer memory:  
 8 MB for 16 ports  
 Gigabit buffer memory:  
 4 MB for 2 ports

**AC Power**

45 W

**Weight**

2.3 kg (5.0 lb)

**Environmental Specifications**

Operating temperature: 0 to 40°C  
 Operating humidity: 90% maximum  
 relative humidity, noncondensing

**Electromagnetic Compliance**

CE mark, commercial  
 FCC Part 15 Class A  
 VCCI Class A  
 EN55022 (CISPR 22), Class A,  
 EN50082-1  
 C-Tick  
 TUV EN60950

**Safety Agency Approvals**

UL listed (UL 1950)/cUL  
 IEC950/EN60950

**Warranty**

Switch: 5 years  
 Power supply: 1 year

**PACKAGE CONTENTS**

Switch  
 Power cord  
 Rack-mount kit  
 User guide  
 Warranty card and Support phone card



D-FS510T/FS518T-001

www.NETGEAR.com

**NETGEAR™**