

Insert a microSD Card

You can also insert a microSD card into the USB modem for mass storage.

To insert a microSD card into the USB modem:

1. Slide the back cover off the USB modem.
2. Insert a microSD card into the corresponding card slot in the USB modem.
3. Slide the back cover back onto the USB modem.

Support

After installing your device, locate the serial number on the label of your product and use it to register your product at <https://my.netgear.com>.

You must register your product before you can use NETGEAR telephone support. NETGEAR recommends registering your product through the NETGEAR website.

For product updates and web support, visit <http://support.netgear.com>.

NETGEAR recommends that you use only the official NETGEAR support resources.

You can get the user manual online at <http://downloadcenter.netgear.com>.

For the current EU Declaration of Conformity, visit http://support.netgear.com/app/answers/detail/a_id/11621/.

For regulatory compliance information, visit <http://www.netgear.com/about/regulatory/>. See the regulatory compliance document before connecting the power supply.

NETGEAR, Inc.
350 East Plumeria Drive, San Jose, CA 95134 USA

December 2013

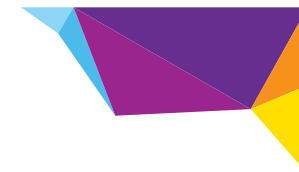
NETGEAR, the NETGEAR logo, and Connect with Innovation are trademarks and/or registered trademarks of NETGEAR, Inc. and/or its subsidiaries in the United States and/or other countries. Information is subject to change without notice. © NETGEAR, Inc. All rights reserved.



201-17811-01

NETGEAR®

Installation Guide



AC329U 3G USB Modem

Installation

Thank you for purchasing the AC329U 3G USB Modem. The dongle allows you to connect your computer to the Internet using a high-speed 3G network.

Insert a SIM Card

Before you can set up the USB modem, you must insert a SIM card into the USB modem.

To insert a SIM card into the USB modem:

1. Slide the back cover off the USB modem.
2. Insert a SIM card into the corresponding card slot in the USB modem.
3. Slide the back cover back onto the USB modem.

Set Up the Dongle

To set up the dongle, install the NETGEAR® Aircard® Mobile Broadband genie® on your computer using the Setup Wizard that is already installed in the USB modem.

To install the NETGEAR Aircard Mobile Broadband genie:

1. Insert the USB modem into the USB port on a computer.

The Setup Wizard displays.

Note: If the Setup Wizard does not display, browse the files on the USB modem and double-click **AutoRun.exe**.

2. Follow the onscreen instructions.

Connect Your Computer to the Internet

Use the NETGEAR Aircard Mobile Broadband genie to select your Internet service provider (ISP) and connect your computer to the Internet.

To select your ISP and connect to the Internet:

1. Insert the USB modem into the USB port on a computer.
2. Double-click the NETGEAR Aircard Mobile Broadband genie shortcut desktop icon on the desktop.

The NETGEAR Aircard Mobile Broadband genie home screen displays.

Note: If you did not create a shortcut desktop icon during the setup, search for the NETGEAR Aircard Mobile Broadband genie on your computer.

3. Click the **Connect** icon.
4. Select your ISP from the **Profile Name** drop-down menu and click the **Connect** button.

Your computer connects to the Internet.

Note: If your ISP is not listed in the drop-down menu, see [Create a Profile for Your ISP](#).

Create a Profile for Your ISP

1. On the NETGEAR Aircard Mobile Broadband genie home screen, click the **Settings** icon.
2. Click the **Profile Management** link.
3. Click the **New** button.
4. Select an ISP from the **Profile Name** drop-down menu.
5. Select the **Dynamic** or **Static** radio button.
6. Complete the **APN** field.
7. Complete the fields in the Authentication section.
8. Click the **Save** button.

Note: If you do not know the information for these fields, get the information from your ISP.

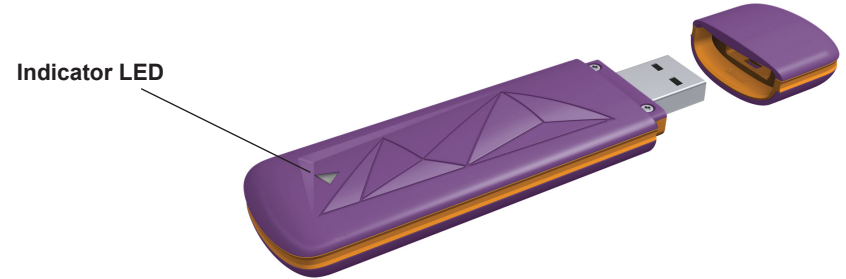
9. To set this profile as your default profile, click the **Set as Default** button.

10. To connect to the new profile, repeat Steps 1–4 in [Connect Your Computer to the Internet](#).

If you still have problems establishing an Internet connection, contact your ISP to get more help.

Indicator LED

The USB modem's Indicator LED is on the back of the USB modem.



The following table describes the activities indicated by the indicator LED:

Indicator LED activity	Description
LED lights solid blue.	The dongle is successfully connected to a USB port.
LED blinks red, then green, then blue.	The dongle is searching for a network.
LED blinks blue.	The dongle is connecting to a 3G network.
LED lights solid blue.	The dongle is connected to a 3G network.
LED blinks green.	The dongle is connecting to a 2G network.
LED lights solid green.	The dongle is connected to a 2G network.
LED lights solid red.	No SIM card is inserted in the dongle.