

Support and Community

Visit netgear.com/support to get your questions answered and access the latest downloads.

You can also check out our NETGEAR Community for helpful advice at community.netgear.com.

Regulatory and Legal

Si ce produit est vendu au Canada, vous pouvez accéder à ce document en français canadien à netgear.com/support/download. (If this product is sold in Canada, you can access this document in Canadian French at netgear.com/support/download.) For regulatory compliance information including the EU Declaration of Conformity, visit netgear.com/about/regulatory. See the regulatory compliance document before connecting the power supply. For NETGEAR's Privacy Policy, visit netgear.com/about/privacy-policy. By using this device, you are agreeing to NETGEAR's Terms and Conditions at netgear.com/about/terms-and-conditions. If you do not agree, return the device to your place of purchase within your return period.

Applicable to 6 GHz devices only: Only use the device indoors when the 6 GHz band is enabled. The operation of 6 GHz devices is prohibited on oil platforms, cars, trains, boats, and aircraft, except that operation of this device is permitted in large aircraft while flying above 10,000 feet. Operation of transmitters in the 5.925-7.125 GHz band is prohibited for control of or communications with unmanned aircraft systems.

NETGEAR®

NETGEAR, Inc.
NETGEAR INTERNATIONAL LTD

© NETGEAR, Inc., NETGEAR and the NETGEAR Logo are trademarks of NETGEAR, Inc. Any non-NETGEAR trademarks are used for reference purposes only.

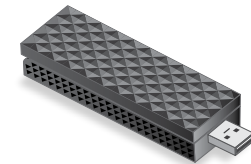
NETGEAR®

QUICK START

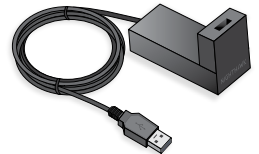
NIGHTHAWK® A9000

BE6500 WIFI 7 USB 3.0 ADAPTER

Package contents



WiFi USB adapter



USB cradle



USB thumb drive



201-31707-01

January 2025

Step 1: Copy or download the A9000 Installation Program file

Plug the supplied USB thumb drive into your computer, then copy the A9000 installation program file (**A9000 Windows Installation Program V1.x.x.xxx_x.x.xx.zip**) to your computer. After copying the installation program file to your computer, remove the USB thumb drive.

Instead of using the thumb drive, you can also visit netgear.com/A9000-download and download the A9000 installation program.

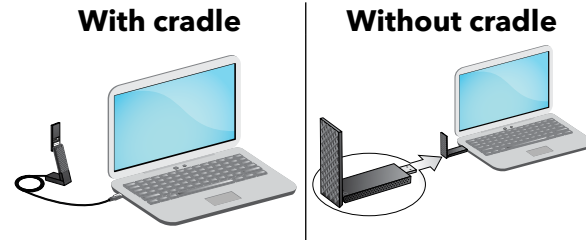
Step 2: Verify that Windows is up-to-date

Make sure that your computer is running an up-to-date version of Windows 11.

For more information about updating Windows, see Microsoft's [Update Windows](#) support article.

Step 3: Insert the adapter

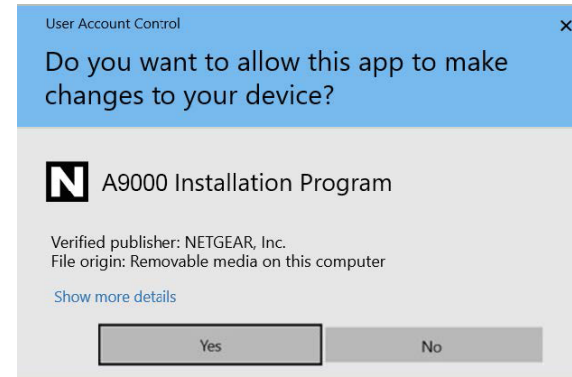
Select the connection that works best for you.



Step 4: Run the A9000 Installation Program

1. Right-click the the A9000 installation program file (**A9000 Windows Installation Program V1.x.x.xxx_x.x.xx.zip**) that you previously copied to your computer and select **Extract All**.
2. Click **Extract**.
3. Double-click **A9000 Windows Installation Program V1.x.x.xxx_x.x.xx.exe** to launch the installation program.

NOTE: If a User Account Control window appears that asks if you want to allow the app to make changes to your device, select **Yes**.



4. Follow the steps displayed on screen to complete installation.

NOTE: The installation program gives you the option to disable other WiFi adapters. For best performance, we recommend that you disable other adapters.

5. Click **Finish** to exit the installation wizard.

Step 5: Join a WiFi network

1. Open the WiFi network settings on your computer by right-clicking the WiFi icon (📶) or the No Internet Access icon (🌐) displayed in the lower right corner of your screen.

2. Click **Manage Wi-Fi connections (>)**, which is next to the WiFi icon.
3. Select your network's name.
4. Click **Connect**.
5. Enter the network security key (WiFi password).
6. Click **Next**.

When you see the message "Connected, secured", setup is complete.

7. Press the **ESC** key or click on the desktop to exit WiFi network settings.

Step 6: Register your A9000

Scan the QR code or visit netgear.com/register to register your A9000 and receive the latest driver updates and other information.

