

Support and Community

Get your questions answered and access the latest downloads at netgear.com/support, and check out our NETGEAR Community at community.netgear.com.

Si ce produit est vendu au Canada, vous pouvez accéder à ce document en français canadien à netgear.com/support/download. (If this product is sold in Canada, you can access this document in Canadian French at netgear.com/support/download.)

Regulatory and Legal

For regulatory compliance information including the EU Declaration of Conformity, visit netgear.com/about/regulatory. See the regulatory compliance document before connecting the power supply. For NETGEAR's Privacy Policy, visit netgear.com/about/privacy-policy.

Where permitted by law, by using this device, you are agreeing to NETGEAR's Terms and Conditions at netgear.com/about/terms-and-conditions. If you do not agree, return the device to your place of purchase within your return period.

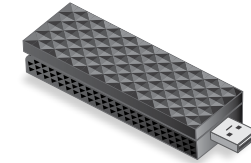
NETGEAR®

QUICK START

NIGHTHAWK® A8500

BE5000 WIFI 7 USB 3.0 ADAPTER

Package contents



WiFi USB adapter



USB thumb drive



201-32857-01

June 2025

NETGEAR®

NETGEAR, Inc.
NETGEAR INTERNATIONAL LTD

© NETGEAR, Inc., NETGEAR and the NETGEAR Logo are trademarks of NETGEAR, Inc. Any non-NETGEAR trademarks are used for reference purposes only.

Step 1: Copy or download the A8500 Installation Program file

Plug the supplied USB thumb drive into your computer, then copy the A8500 installation program file (**A8500 Windows Installation Program V1.x.x.xxx_x.x.xx.zip**) to your computer. After copying the installation program file to your computer, remove the USB thumb drive.

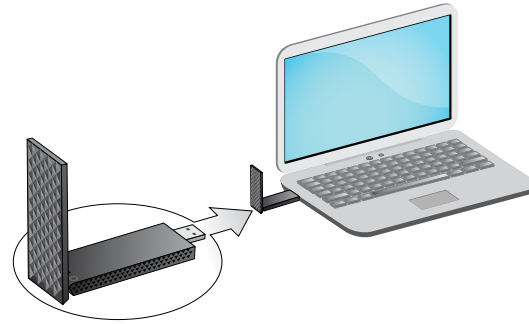
Instead of using the thumb drive, you can also visit netgear.com/A8500-download and download the A8500 installation program.

Step 2: Verify that Windows is up-to-date

Make sure that your computer is running an up-to-date version of Windows 11.

For more information about updating Windows, see Microsoft's [Update Windows](#) support article.

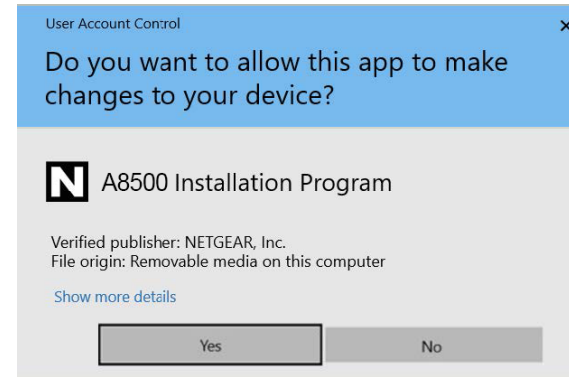
Step 3: Insert the adapter



Step 4: Run the A8500 Installation Program

1. Right-click the the A8500 installation program file (**A8500 Windows Installation Program V1.x.x.xxx_x.x.xx.zip**) that you previously copied to your computer and select **Extract All**.
2. Click **Extract**.
3. Double-click **A8500 Windows Installation Program V1.x.x.xxx_x.x.xx.exe** to launch the installation program.

NOTE: If a User Account Control window appears that asks if you want to allow the app to make changes to your device, select **Yes**.



4. Follow the steps displayed on screen to complete installation.

NOTE: The installation program gives you the option to disable other WiFi adapters. For best performance, we recommend that you disable other adapters.

5. Click **Finish** to exit the installation wizard.

Step 5: Join a WiFi network

1. Open the WiFi network settings on your computer by clicking the WiFi icon (📶) or the No Internet Access icon (🌐) displayed in the lower right corner of your screen.

2. Click **Manage Wi-Fi connections (>)**, which is next to the WiFi icon.
3. Select your network's name.
4. Click **Connect**.
5. Enter the network security key (WiFi password).
6. Click **Next**.

When you see the message "Connected, secured", setup is complete.

7. Press the **ESC** key or click on the desktop to exit WiFi network settings.

Step 6: Register your A8500

Scan the QR code or visit netgear.com/register to register your A8500 and receive the latest driver updates and other information.

