

A6200 WiFi USB Adapter 802.11ac Dual Band

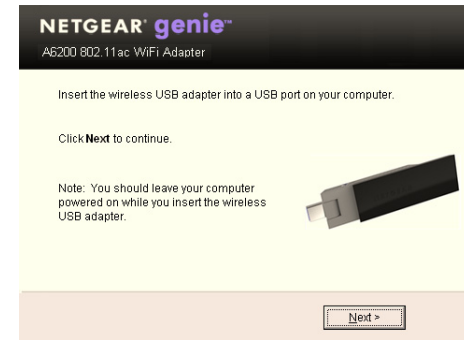
Package Contents



Installation

1. Insert the resource CD in your computer CD drive. If the CD main screen does not display, browse the files on the CD and double-click **autorun.exe**.
2. Click **Setup**.
The Software Update Check screen displays.
3. If you are connected to the Internet, click **Check for Updates**. If not, then click **Install from CD**.
4. Click **I agree** to accept the license agreement and then click **Next**.

A message displays asking you to wait while software is installed. After a few minutes, NETGEAR genie prompts you to insert your adapter.

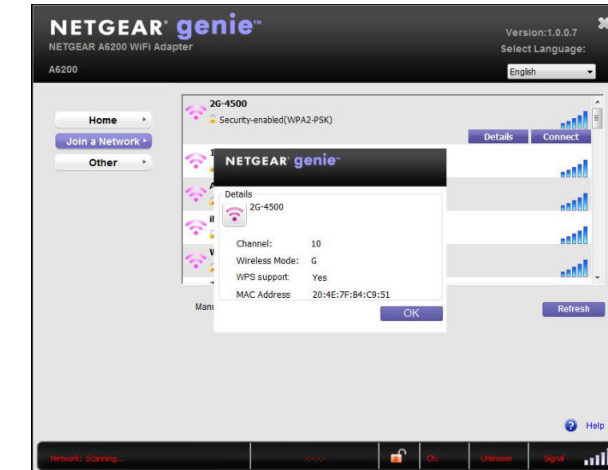


5. You can use the adapter with or without the desktop dock:
 - To use the adapter with the desktop dock, place the wireless adapter into the dock and connect the USB cable to the USB port on your computer.
 - To use the adapter without the desktop dock, insert the adapter into a USB port on your computer, as shown on the right.



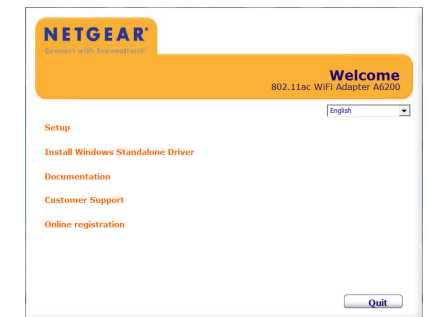
6. Click **Next**.

NETGEAR genie displays a list of wireless networks in your area.



Standalone Driver Installation

1. Insert the resource CD in your computer CD drive. If the CD main screen does not display, browse the files on the CD and double-click **autorun.exe**.
2. Click **Install Windows Standalone Driver**.
The driver installs on your computer.
3. When prompted, either insert the adapter into a USB port on your computer, or connect it with the USB cable that came in the package.

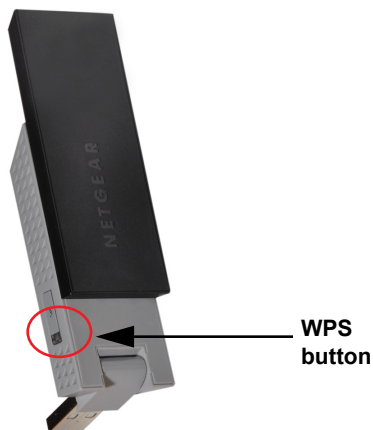


How to Join a Wireless Network

You can join a wireless network from the NETGEAR genie, or you can use Wi-Fi Protected Setup (WPS) if your wireless router supports it.

- **Option 1: NETGEAR genie.** Click your wireless network (SSID) to select it and click **Connect**. If the network is secure, enter its password or network key.
- **Option 2: WPS.** Press and hold the **WPS** button on the side of the adapter for 2 seconds.


Within 2 minutes, press the **WPS** button on your wireless router or gateway.




The adapter joins the network, which can take a few minutes. Your settings are saved in a profile.

How to Check Your Connection Status

When you install your adapter, the NETGEAR genie icon displays in the Windows system tray and on the desktop. You can double-click this icon to open NETGEAR genie to make changes or connect to a different wireless network. The color of the icon indicates the strength of your wireless connection:

 White: 3–5 bars (strong connection)

 Yellow: 1–2 bars (weak connection)

 Red: 0 (zero) bars (no connection)

If you remove your adapter, NETGEAR genie is not available, so the icon does not display. When you insert the adapter again, the icon returns.

Added Range and Performance

For added range and performance, you can flip the top portion of the adapter so that it is perpendicular to the adapter:



In this position, the internal antennas are extended out from the adapter for increased WiFi performance.

For the complete EU Declaration of Conformity, visit http://support.netgear.com/app/answers/detail/a_id/11621/.

Statement of Conditions: In the interest of improving internal design, operational function, and/or reliability, NETGEAR reserves the right to make changes to the products described in this document without notice. NETGEAR does not assume any liability that may occur due to the use or application of the product(s) or circuit layout(s) described herein.

Technical Support

After installing your device, locate the serial number on the label of your product, and use it to register your product at <https://my.netgear.com>.

You must register your product before you can use NETGEAR telephone support. NETGEAR recommends registering your product through the NETGEAR web site. For product updates and web support, visit <http://support.netgear.com>.

You can get the user manual online at <http://downloadcenter.netgear.com> or through a link in the product's user interface.



201-15571-02



September 2012



This symbol appears in accordance with the European Union Directive 2002/96 on the Waste Electrical and Electronic Equipment (the WEEE directive). If you dispose of this product in the European Union, treat and recycle it in accordance with your jurisdiction's laws that implement the WEEE directive.

NETGEAR, the NETGEAR logo, and Connect with Innovation are trademarks or registered trademarks of NETGEAR, Inc. and/or its subsidiaries in the United States and/or other countries. Information is subject to change without notice. Other brand and product names are trademarks or registered trademarks of their respective holders. ©NETGEAR, Inc. All rights reserved.

For indoor use only in all EU countries and Switzerland.