

# NETGEAR®

## Installation Guide

**A6100 WiFi USB Adapter**  
802.11ac Dual Band

## Package Contents



**A6100 WiFi USB Adapter**



**Resource CD**

## Installation

Follow these instructions to begin using your A6100 WiFi USB Adapter.

### To set up your adapter:

1. Insert the resource CD in your computer CD drive.

**Note:** If your computer does not have a CD drive, download the A6100 resource CD driver by visiting <http://support.netgear.com>. Click the **Support for Home Products** button and enter **A6100** in the search field.

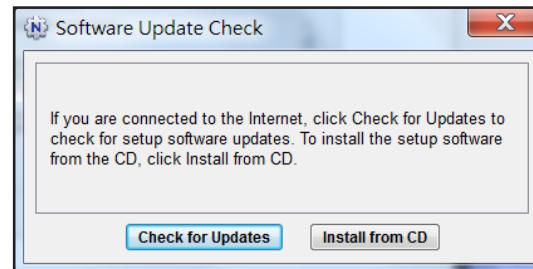
If the Resource CD screen does not display, browse the files on the CD and double-click **Autorun.exe**.

The NETGEAR Resource CD screen displays.



2. Click the **Setup** link.

The Software Update Check screen displays.



3. Install the setup software.

You have two options:

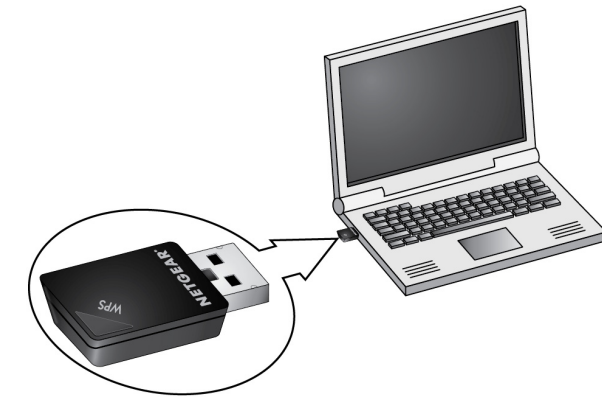
- **Connected to the Internet.** If you are connected to the Internet, click the **Check for Updates** button. After the software checks for updates, the Update Check Complete screen displays. Click the **Continue** button. The Welcome screen displays.
- **Not connected to the Internet.** If you are not connected to the Internet, click the **Install from CD** button. The Welcome screen displays.

4. Click the **I agree** radio button to accept the license agreement and then click the **Next** button.

A message displays asking you to wait while software is installed. After a few minutes, NETGEAR genie prompts you to insert your adapter.

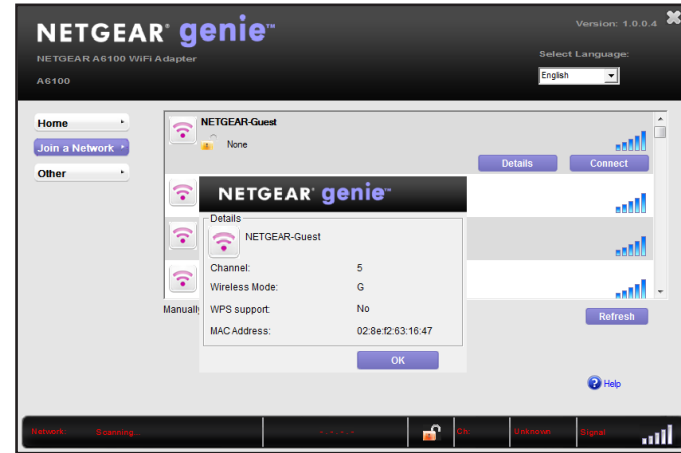


5. Insert the adapter into a USB port on your computer, as shown:



6. Click the **Next** button. The NETGEAR genie screen displays.

NETGEAR genie displays a list of wireless networks in your area.



## Standalone Driver Installation

### To install a standalone driver:

1. Insert the resource CD in your computer CD drive.

**Note:** If your computer does not have a CD drive, download the A6100 resource CD driver by visiting <http://support.netgear.com>. Click the **Support for Home Products** button and enter **A6100** in the search field.

If the Resource CD screen does not display, browse the files on the CD and double-click **Autorun.exe**.

2. Click the **Install Windows Standalone Driver** link.

The driver installs on your computer.

3. When prompted, insert the adapter into a USB port on your computer.

NETGEAR, the NETGEAR logo, and Connect with Innovation are trademarks and/or registered trademarks of NETGEAR, Inc. and/or its subsidiaries in the United States and/or other countries. Information is subject to change without notice. © NETGEAR, Inc. All rights reserved.



201-17247-03

NETGEAR, Inc.  
350 East Plumeria Drive  
San Jose, CA 95134 USA

August 2013

## Join a Wireless Network

You can join a wireless network from the NETGEAR genie, or you can use Wi-Fi Protected Setup (WPS) if your wireless router supports it.




- **NETGEAR genie.** From the NETGEAR genie screen, click the **Join a Network** button. Select your wireless network and click the **Connect** button. If the network is secure, enter its password or network key.
- **WPS.** Press and hold the **WPS** button on the adapter for two seconds. Within two minutes, press the **WPS** button on your wireless router or gateway.



The adapter joins the network, which can take a few minutes. Your settings are saved in a profile.

## Check Your Connection Status

When you install your adapter, the NETGEAR genie icon displays in the Windows system tray and on the desktop. You can double-click this icon to open NETGEAR genie to make changes or connect to a different wireless network. The color of the icon indicates the strength of your wireless connection:

-  **White.** 3–5 bars (strong connection)
-  **Yellow.** 1–2 bars (weak connection)
-  **Red.** 0 (zero) bars (no connection)

If you remove your adapter, NETGEAR genie is not available, so the icon does not display. When you insert the adapter again, the icon returns.

## Support

Thank you for selecting NETGEAR products.

After installing your device, locate the serial number on the label of your product and use it to register your product at <https://my.netgear.com>.

You must register your product before you can use NETGEAR telephone support. NETGEAR recommends registering your product through the NETGEAR website. For product updates and web support, visit <http://support.netgear.com>.

NETGEAR recommends that you use only the official NETGEAR support resources.

You can get the user manual online at <http://downloadcenter.netgear.com> or through a link in the product's user interface.

For the current EU Declaration of Conformity, visit [http://support.netgear.com/app/answers/detail/a\\_id/11621/](http://support.netgear.com/app/answers/detail/a_id/11621/).