

NETGEAR 10/100/1000 Mbps Gigabit CardBus Adapter GA511

Start Here

Before you begin installation, check the Package Contents section in your *Reference Manual* located on your *NETGEAR Adapter Resource CD*. Advanced configuration options are also covered in the *Reference Manual*.

Estimated Completion Time: 15 minutes.

Verify that System Requirements are Met

Before installing the GA511, please make sure that your computer meets the following minimum system requirements:

- A notebook PC with a Pentium® 300 MHz or higher compatible processor with an available CardBus slot
- A CD-ROM drive
- 64 MB of memory
- At least 5 MB of disk space
- Windows Vista, XP Home, Windows XP Professional, 2000, Me, 98SE (2nd edition), Windows 2000 Professional, Windows 2000 Server, or Windows 2000 Advanced Server. Some versions of Windows may ask for the Windows operating system installation files to complete the installation of the GA511 driver software.

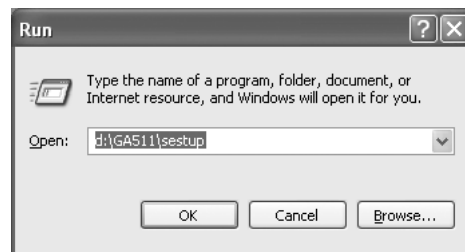
Important Vista Users! If you are installing the GA511 on a system running Windows Vista, install the GA511 Gigabit CardBus Adapter first, as shown in Step 2a., and restart your computer. Then, install the GA511 software, as shown in Step 1 (a through e).

Install the GA511 Gigabit CardBus Adapter

1. First, install the GA511 software.

- a. Power on your notebook, let the operating system boot up completely, and log in as needed.

- b. Insert the *NETGEAR Adapter Resource CD* into your CD-ROM drive. The Adapter Resource CD main page will load.
- c. From the Windows Start menu, select Run. The Run dialog box opens.



- d. Enter the path to the GA511 setup.exe file on the CD. For example, if your CD-ROM is drive D, enter **D:\GA511\setup** as the path. Then, click OK.
- e. Follow the InstallShield Wizard steps. Click Finish when done. Remove the *NETGEAR Adapter Resource CD*. If prompted, restart your computer.

Now, the GA511 driver and utility software are installed.

2. Next, install the GA511 Gigabit CardBus Adapter.

- a. Locate an available CardBus slot on the side of your notebook. Hold the PC Card with the NETGEAR logo facing up and insert it into the CardBus slot.


Note: Do not use excessive force, but make sure the card is fully inserted into the slot.

- b. Follow the **Found New Hardware Wizard** steps.



- c. Accept the **Install the software automatically** setting, and click **Next** to proceed.

Note: If Windows Vista, XP or 2000 displays a Windows XP Logo Testing or a Digital Signature Not Found warning, click Continue Anyway or Yes to proceed.

- d. Click **Finish** to complete the installation. If prompted to restart your computer, power down and restart the notebook. You will see the GA511 Smart Wizard icon  in the system tray on the lower right side of the Windows task bar.

3. Now, configure the GA511.


- a. Double-click the connection icon  in the Windows system tray to open the Windows network connection page.

If the connection icon is not visible, you can change the connection properties by going to Start > Control Panel > Network Connections.

- b. Double-click on the NETGEAR GA511 Gigabit CardBus Adapter connection.
- c. Click Configure.
- d. Click Properties and configure the GA511 according to your network requirements.


For assistance with configuring the network settings, please see the networking tutorials on the *NETGEAR Adapter Resource CD*.

4. Finally, verify network connectivity.

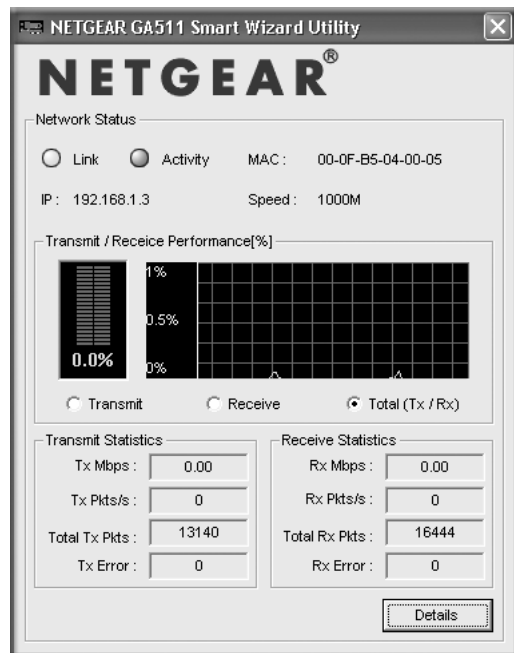
- a. Click the GA511 Smart Wizard icon  on the lower right side of the Windows task bar.
- b. Verify that the GA511 status information matches your network.

Note: If you are unable to connect, see the the Troubleshooting section below or the troubleshooting tips in the Reference Manual on the *NETGEAR Adapter Resource CD*.

GA511 Smart Wizard Utility

The GA511 Smart Wizard utility provides a convenient way to check the status of the adapter without needing to view the LEDs on the top of the adapter itself. Click the GA511 Smart Wizard utility icon  to view the current status.

If the utility is not displayed on the taskbar, you can start it by going to Start > Programs > NETGEAR GA511 Adapter > GA511 Smart Wizard Utility. Then, click **Details** to view the adapter settings.



Troubleshooting

If you have trouble setting up your GA511, check the tips below. You can also consult more extensive troubleshooting procedures on the NETGEAR, Inc. support website at <http://kbserver.netgear.com/products/GA511.asp>.

Symptom	Cause	Solution
The Adapter LED lights are not lit.	The GA511 is not inserted into the slot properly or the GA511 software is not loaded.	Make sure the notebook is fully powered on. Remove and reinsert the GA511. Check the Windows device manager to see if the GA511 Gigabit CardBus Adapter is recognized and enabled. Reload the GA511 software, if necessary.
The Link/Act LED light is lit, but the 100/1000 LED is not lit.	The GA511 is operating at 10 Mbps.	The computer is connected to a router or other network device that is operating at 10 Mbps. If you connect to a 100 Mbps device, the 100/1000 LED will be amber. If you connect to a 1000 Mbps device, the 100/1000 LED will be green.
The 100/1000 LED is blinking intermittently.	There is a problem with the link such as a speed mismatch, possible bad cable, bad connector, or configuration mismatch.	Check the network cable and make sure it is functioning properly. Try plugging the network cable into a different port on the router attached to the gigabit Ethernet adapter.

Technical Support

Thank you for selecting NETGEAR products.

After completing setup and configuration, locate the serial number on the bottom label of the GA511 Gigabit CardBus Adapter and use it to register your product at <http://www.netgear.com/register>.

Registration on the web site or over the phone is required before you can use our telephone support service. The phone numbers for worldwide regional customer support centers are on the Warranty and Support Information card that came with your product.

Go to <http://www.netgear.com/support> for product updates and web support.



201-10177-02

April 2007



This symbol was placed in accordance with the European Union Directive 2002/96 on the Waste Electrical and Electronic Equipment (the WEEE Directive). If disposed of within the European Union, this product should be treated and recycled in accordance with the laws of your jurisdiction implementing the WEEE Directive.

© 2007 by NETGEAR, Inc. All rights reserved. NETGEAR and the NETGEAR logo are registered trademarks of NETGEAR, Inc. in the United States and/or other countries. Other brand and product names are trademarks or registered trademarks of their respective holders. Information is subject to change without notice.