

# NETGEAR®

## Installation Guide

Connect with Innovation™

NETGEAR ProSafe FS752TP Smart Switch™

### Start Here

Follow these instructions to install your FS752TP Smart Switch and connect it to the network. Then, consult the *FS752TP Smart Switch Software Administration Manual* for information about configuring features such as VLANs, spanning tree protocol (STP), and Quality of Service (QoS).

### Verify the Package Contents

When you open the box, verify that you received everything. The package includes the following contents:

- NETGEAR FS752TP Smart Switch
- Rubber footpads for tabletop installation
- Power cord
- Rack-mount kit
- Installation Guide (this document)
- Resource CD that includes the NETGEAR Smart Control Center utility and *Hardware Installation Guide*. A link to the online *Software Administration Manual* is on the Resource CD.
- Warranty/Support Information Card.

### Install the Switch

Prepare the site so that the mounting, access, power source, and environmental requirements are met. If you have any questions about these requirements, see the *Hardware Installation Guide* for the FS752TP Smart Switch on your Resource CD.

Install the switch using one of the following methods:

- On a flat surface: Put one of the rubber footpads that came with the switch on each of the four concave spaces on the bottom of the switch.
- In a rack: Use the rack-mount kit supplied with your switch to install the switch in a 19-inch (48.3-centimeter) EIA standard equipment rack. Follow the installation instructions included in the *Hardware Installation Guide*.

### Prepare the Administrative Computer

The administrative computer is the Windows-based system you use to perform the initial switch setup and configuration. The administrative computer must have an Ethernet adapter with a connection to the network and a CD drive.

### Install the Smart Control Center Utility on the Computer

The NETGEAR Smart Control Center is a Windows-based application that discovers NETGEAR Smart switches in your network and helps you to perform management operations like firmware upgrades and IP address assignment.

To install the Smart Control Center utility on the administrative computer:

1. Insert the Resource CD into your CD drive.
2. Run the Setup program to install the Smart Control Center utility. The Installation Wizard guides you through the installation.

### Connect the Switch to the Network

If you use static IP addressing in your network, use the Smart Control Center utility to configure a static IP address on the switch before connecting it to your network. In the absence of a DHCP server, the switch uses a default IP address of 192.168.0.239 with a subnet mask of 255.255.255.0.

**IMPORTANT!** The DHCP client on the switch is enabled by default. If you use a DHCP server to provide the switch with an IP address, you **do not** need to configure the switch before connecting it to the network.

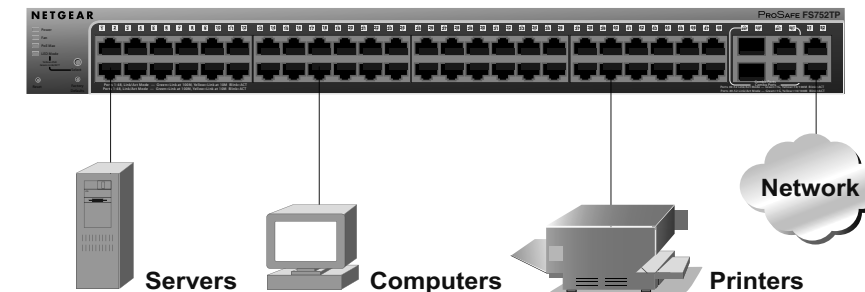
To configure the switch with a static IP address before connecting it to your network:

1. Configure a static IP address on the administrative PC in the 192.168.0.0/24 subnet, for example 192.168.0.1.

2. Use a category 5 (Cat5) unshielded twisted-pair (UTP) cable to connect the Ethernet port on the PC to any front-panel RJ-45 port on the switch.
3. Launch the Smart Control Center utility on the PC to discover the switch and configure the appropriate static IP address for your network. For detailed information about this step, see the online *FS752TP Smart Switch Software Administration Manual*.

To connect the switch to the network:


1. Connect each PC or other network device, such as a printer or server, to an RJ-45 network port on the switch front panel.  
Use Cat5 UTP cable terminated with an RJ-45 connector to make these connections.
2. Connect the switch to your network through a 1 Gbps uplink port.



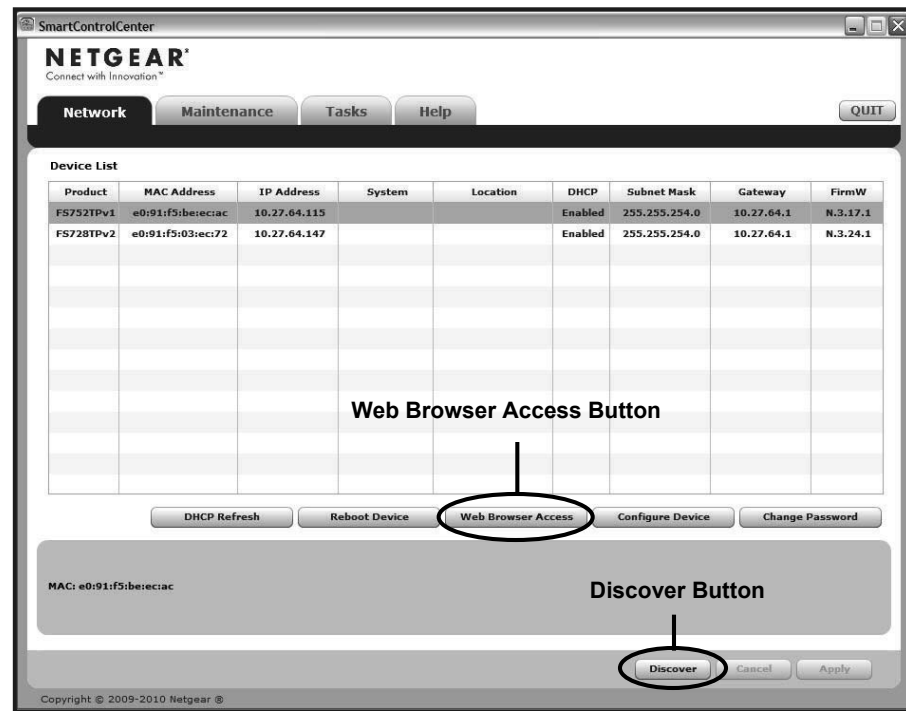
3. Connect one end of the supplied power cord to the switch and the other end to an AC power source to power on the switch.

### Discover the Switch with the Smart Control Center Utility

To discover the FS752TP switch by using the Smart Control Center utility:

1. Double-click the **Smart Control Center** icon  on your desktop or select the application from the Windows Start menu Programs to run the utility.
2. From the main Smart Control Center screen, click **Discover** to find your switch in the network.  
Make sure the switch has completed its boot cycle and is operational before you click **Discover**.

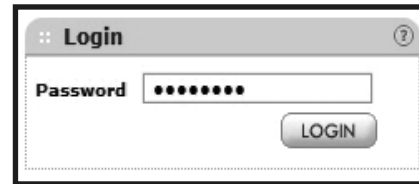
The Smart Control Center utility finds the switch and displays information such as its MAC Address, IP Address, and model number.



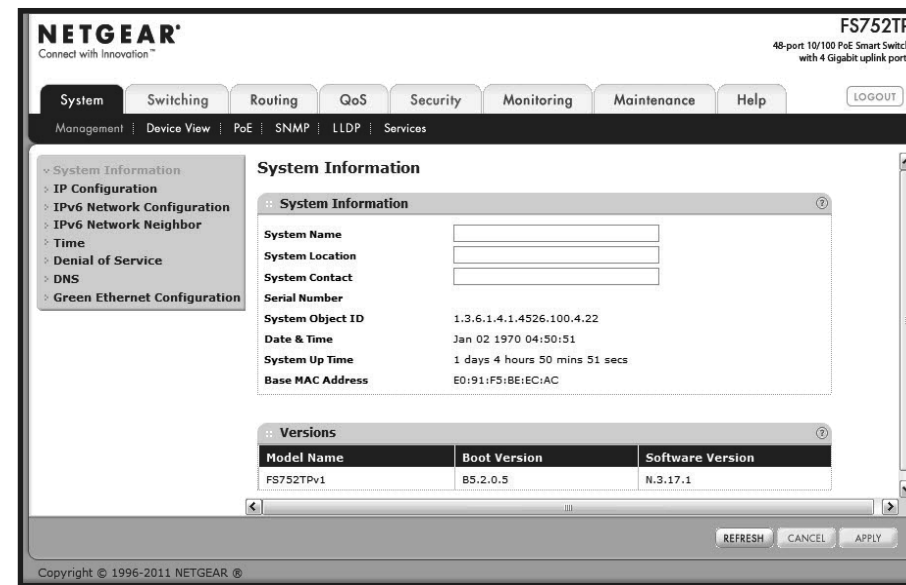
If you cannot view your switch, verify that the cable connections are secure and that the IP address configuration of the administrative computer is in the same subnet as the switch. Then click the **Discover** button.

- Click to select the line displaying the details of your switch. If there are multiple Smart Switches in your network, be sure to select the one you want to configure.


- Click **Web Browser Access** to launch a Web browser on the administrative computer and view the switch log in screen. The Login dialog appears.



- Enter the default password of **password** in lowercase letters and click **Login**. The **System Information** page appears.



- Configure the switch for your network.  
For information about switch features and for assistance with configuration procedures, consult the online *FS752TP Smart Switch Software Administration Manual*.

For information about each field to view or configure, click the help icon  available on each page of the switch user interface.

## Troubleshooting Tips

- Make sure the FS752TP Smart Switch is operational before you attempt to discover it.**  
After you power up the FS752TP switch, wait at least two minutes before you click the **Discover** button on the Smart Control Center utility.
- Make sure the Ethernet cables are securely plugged in.**  
For each powered-on device connected to the Smart Switch with a securely plugged in Ethernet cable, the corresponding port status LED will light.
- Make sure the administrative computer's network settings are correct.**  
In most cases, computers are configured to obtain an IP address automatically via DHCP. For help with this, refer to the *FS752TP Smart Switch Software Administration Manual*; a link to the online manual is on the Resource CD.  
If your network uses static IP addresses, be sure the switch and computer are configured with valid IP addresses that are in the same subnet.

## Technical Support

Thank you for selecting NETGEAR products.

After installing your device, locate the serial number on the label of your product and use it to register your product at <http://www.NETGEAR.com/register>. Registration is required before you can use the telephone support service. Registration via our website is strongly recommended.

Go to <http://support.netgear.com> for product updates and Web support.

For additional information about setting up, configuring, and using your switch, see the *FS752TP Smart Switch Software Administration Manual*.

For complete DoC please visit the NETGEAR EU Declarations of Conformity website at: [http://support.netgear.com/app/answers/detail/a\\_id/11621/](http://support.netgear.com/app/answers/detail/a_id/11621/)



This symbol was placed in accordance with the European Union Directive 2002/96 on the Waste Electrical and Electronic Equipment (the WEEE Directive). If disposed of within the European Union, this product should be treated and recycled in accordance with the laws of your jurisdiction implementing the WEEE Directive.

©2011 by NETGEAR, Inc. All rights reserved. NETGEAR and the NETGEAR logo are registered trademarks of NETGEAR, Inc. in the United States and/or other countries. Other brand and product names are trademarks or registered trademarks of their respective holders. Information is subject to change without notice.



201-13467-01

April 2011