

NETGEAR® Installation Guide

54 Mbps Wireless PC Card WG511

Installation Guide

Follow these quick steps to install your WG511

These basic setup instructions assume that you will connect to a wireless access point or wireless router, and you are not using WEP security. Please refer to the online help and the *Reference Manual* on your CD for instructions on configuring WEP, Ad-hoc mode, or advanced options.

Estimated Completion Time: 5-15 minutes for each notebook PC.

Windows XP Installation

1 First, Install the WG511 Software

- Power on your notebook, let the operating system boot up completely, and log in as needed.
- Insert the *Resource CD* for the WG511 into your CD-ROM drive. The CD main page shown below will load.



- Click the **Install Driver & Utility** link.
- Follow the InstallShield Wizard steps, and click **Finish** when done to restart your computer.

2 Next, Install the WG511 Wireless PC Card

- Hold the PC Card with the NETGEAR logo facing up and insert it into a CardBus slot. After a short delay, the Found New Hardware Wizard displays.



Note: If a Windows XP logo testing warning appears, click **Continue Anyway** to proceed.


- Next you will be prompted to enable the NETGEAR Smart Wireless Settings Utility configuration utility.



Click **Yes** to accept this option.

If you choose No, you must read the Windows XP documentation for an explanation of how to use the Windows XP wireless network configuration utility.

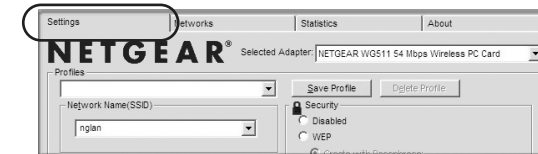
You will also be prompted to choose the country you are located in. Select your location from the nlist.

- Click **Finish** to complete the installation. You will see the WG511 system tray icon  on the lower right portion of the Windows task bar.

3 Now, Configure Your WG511 and Save the Profile

- Click the icon  in the Windows system tray to open the WG511 Smart Wireless Settings Utility.

The utility opens to the Settings tab page.



- Change the Network Name SSID to match your network.

Tip: To view the available wireless networks, use the drop-down list or the Networks tab and choose the one you want.

- Click **Apply** to activate the connection.

Tip: Create *work* and *home* profiles. Then, activate whichever one you need for your current location.

Note: The status bar at the bottom of the utility reports the speed of your connection. 54 Mbps speed is only possible when your wireless network has a 54 Mbps access point such as the NETGEAR WGR614 54 Mbps Wireless Router.

4 Finally, Verify Wireless Network Connectivity

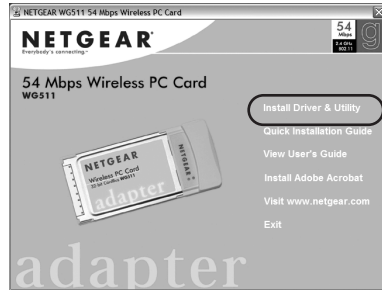
- Verify that the status monitor information at the bottom of the utility matches your wireless network.
- Check the WG511 LEDs: **Green** (Link light) – blinking indicates the WG511 is trying to establish a connection but is unable to do so; **Amber** (Activity light) – blinking indicates the WG511 has a connection and is transmitting or receiving data.
- Verify connectivity to the Internet or network resources.

Note: If you are unable to connect, see the *Troubleshooting Chapter* of the *Reference Manual* on the *Resource CD*.

Windows 2000, ME/98SE Installation

1 First, install the WG511 software

- Power on your notebook, let the operating system boot up completely, and log in as needed.
- Insert the *Resource CD* for the WG511 into your CD-ROM drive. The CD main page shown below will load.



- Click the **Install Driver & Utility** link.
- Follow the InstallShield Wizard steps, click **Finish** when done, and if prompted, restart your computer.

2 Next, install the WG511 Wireless PC Card


- Hold the PC Card with the NETGEAR logo facing up and insert it into a CardBus slot. After a short delay, the Found New Hardware Wizard displays.



Note: If a Windows 2000 displays a Digital Signature Not Found warning, click **Yes** to continue the installation.

- Follow the Found New Hardware Wizard steps, click **Finish** when done, and if prompted, restart your computer.

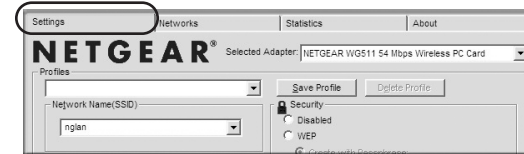
- Next, you will be prompted to choose the country where you are located. Select your location from the list.

You will now see the WG511 system tray icon  in the lower right area of the Windows task bar.

3 Now, configure your WG511 and save the Profile

- Open the WG511 Smart Wireless Settings Utility by clicking on the icon in the Windows system tray.

The utility opens to the Settings tab page.



- Change the Network Name SSID to match your network.

Tip: To view the available wireless networks, use the drop-down list or the Networks tab and choose the one you want.

- Click **Apply** to activate the connection.

Tip: Create work and home profiles. Then, activate whichever one you need for your current location.

Note: The status bar at the bottom of the utility reports the speed of your connection. 54 Mbps speed is only possible when your wireless network has a 54 Mbps access point such as the NETGEAR WGR614 54 Mbps Wireless Router.

4 Finally, verify wireless network connectivity

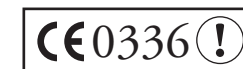
- Verify that the status monitor information at the bottom of the utility matches your wireless network
- Check the WG511 LEDs: **Green** (Link light) – blinking indicates the WG511 is trying to establish a connection but is unable to do so; **Amber** (Activity light) – blinking indicates the WG511 has a connection and is transmitting or receiving data.
- Verify connectivity to the Internet or network resources.

Note: If you are unable to connect, see the *Troubleshooting Chapter* of the *Reference Manual* on the *Resource CD*.

Technical Support

PLEASE REFER TO THE SUPPORT INFORMATION CARD THAT SHIPPED WITH YOUR PRODUCT.

By registering your product at www.NETGEAR.com/register, we can provide you with faster expert technical support and timely notices of product and software upgrades.



Attention: This device may be used throughout the European community. Some restrictions may apply in France and Italy.

©2004 NETGEAR, Inc. NETGEAR, the Netgear logo, Auto Uplink, ProSafe and Everybody's connecting are trademarks or registered trademarks of Netgear, Inc. in the United States and/or other countries. Microsoft and Windows are registered trademarks of Microsoft Corporation in the United States and/or other countries. Other brand and product names are trademarks or registered trademarks of their respective holders. Information is subject to change without notice. All rights reserved.



201-10170-01

May 2004