



Turn ON OFF TRU-Install

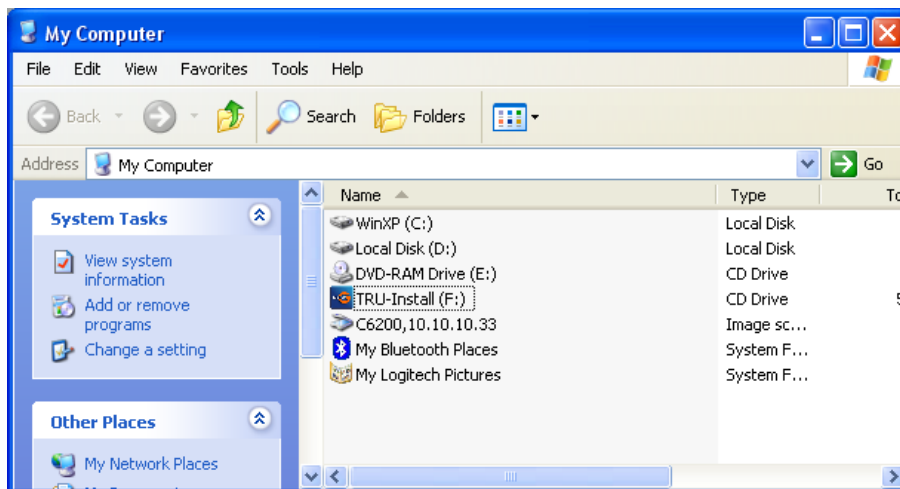
July 30, 2012 Version 03

Pre-Requisites:

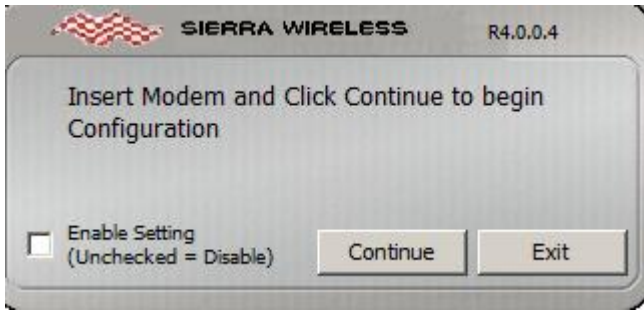
1. Download a copy of EnDisSWoC ver 4.0.0.4 (follow the link to Disable TRU-Install) from www.mobilefaq.com/downloads.htm
2. On Windows XP or Windows 7 machine, install current copy of Sierra Wireless Watcher connection manager. You can get a copy of Watcher from www.sierrawireless.com/support/downloads

Method Turn OFF TRU-Install:

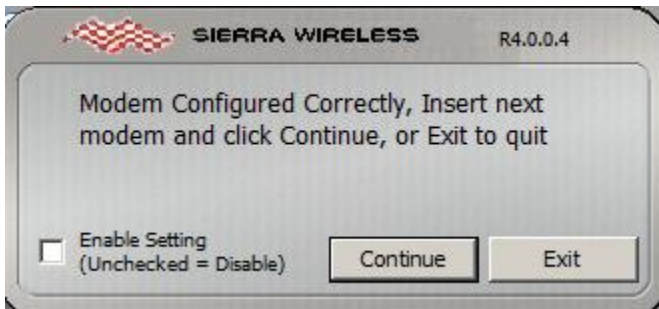
1. Plug in Sierra Wireless modem and let it complete enumerating (being detected by Windows).
2. This step may not be needed. If TRU-Install window pops up, then the current Watcher version installed is earlier than the one on the modem. To get around this so that the modem fully enumerates is to open File Explorer and Eject the TRU-Install drive (usually drive F:) by right clicking on it and selecting Eject.



3. Run EnDisSWoC and ensure the check box is cleared.



4. When the pop up box displays the following when successfully Turned OFF.



Method Turn ON TRU-Install:

1. Insert modem and wait until enumeration is completed (Windows has fully detected the modem).
2. Run EnDisSWoC but make sure check box is ticked.

