

# NETGEAR® Installation Guide

## N150 Wireless USB Adapter WNA1100

This guide explains Express installation with the NETGEAR Smart Wizard and Standalone Windows Driver installation (on the other side of this document).

**Note:** For help with custom installation, see the *User Manual* on the *Resource CD*.

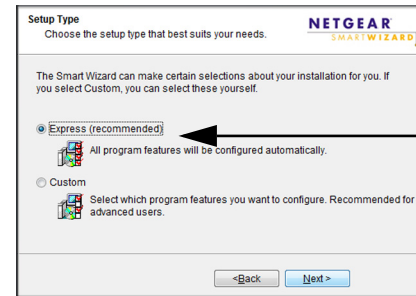
Estimated completion time: 10 minutes.

## Package Contents



## Smart Wizard Installation

1. Insert the **Resource CD** in your computer's CD drive. If the CD main screen does not display, browse the files on the CD and double-click **Autorun.exe**.
2. Click **Setup**. The Software Update Check screen displays.
3. If you are connected to the Internet, click **Check for Updates**. If not, then click **Install from CD**.
4. Accept the license agreement.
5. On the Setup Type screen, for **Express (recommended)** setup, click **Next**.



## Insert Your Adapter

You are prompted to insert your adapter.

1. Either insert the adapter into a USB port on your computer, or use the cradle and USB cable provided to connect the adapter. For help, see "Using the USB Cable" on the other side of this document.

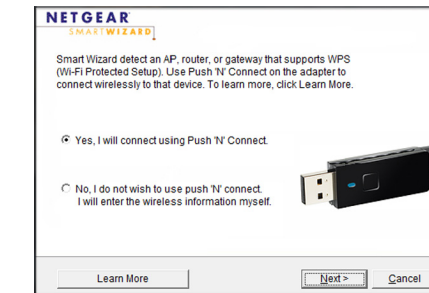
**Note:** For best results, put the wireless adapter at least 4 feet (1 meter) away from your router.

2. Click **Next**. The WNA1100 software detects the adapter.
3. Follow the onscreen prompts for the NETGEAR wizard.

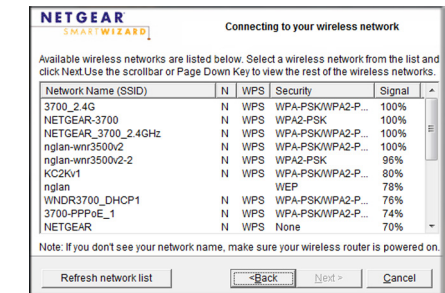


## Connect to a Network

You are prompted to connect to a wireless network with one of these screens:



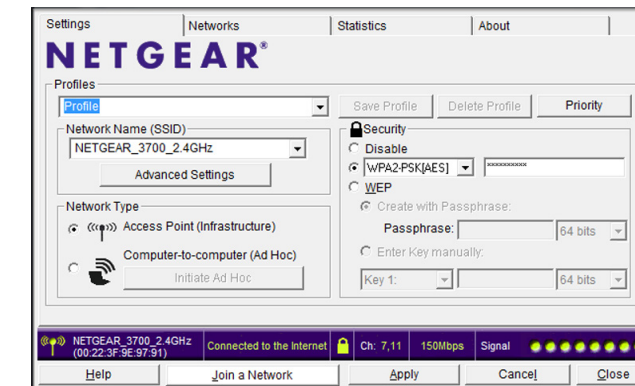
WPS network




No WPS networks

- **WPS network:** This network supports Push 'N' Connect (also called WPS). You can follow the steps to push the WPS button and connect without entering a password.
- **No WPS:** Select your wireless network from the list and click **Next**. To connect to a secure network, you must enter its passphrase or network key.

The adapter connects to the network, which can take a minute or two. The Smart Wizard Settings screen displays. Your settings are saved in a profile, which you can name.



The  icon appears in the system tray and on the desktop. You can use it to open the Smart Wizard to make changes or connect to a different wireless network.

# Standalone Driver Installation

1. Insert the **Resource CD** in your computer's CD drive. If the CD main screen does not display, browse the files on the CD and double-click **Autorun.exe**.

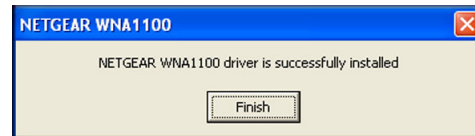
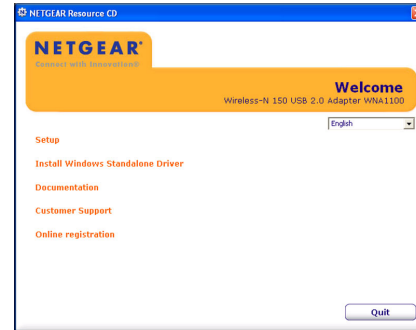
2. Click **Install Windows Standalone Driver**.

The driver is installed on your computer.

3. When prompted, either insert your adapter into a USB port on the computer, or use the cradle and USB cable to connect it.

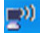
**Note:** For best results, put the wireless adapter at least 4 feet (1 meter) away from your router.

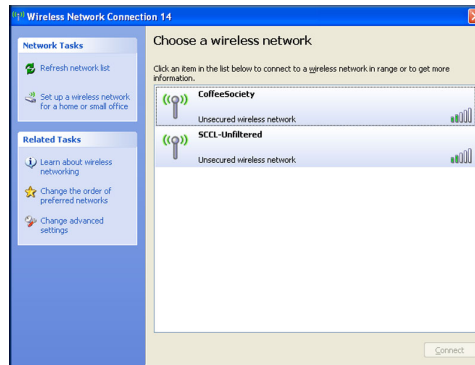
4. When this message displays, click **Finish**.



## Connect to a Network

The screen that displays after you install the driver depends on the Windows version on your computer. This example shows a Windows XP connection screen:

The  icon appears in the system tray. You can use it to make changes or connect to a different wireless network. For help managing wireless connections in Windows, see your Windows documentation.



# Using the USB Cable

You can use the USB cable and adapter cradle to extend the range of your adapter and obtain better wireless reception. Insert the adapter in the plastic cradle and attach the USB cable to the adapter and the computer.



# Technical Support

Thank you for selecting NETGEAR products.

After installing your device, locate the serial number on the label of your product and use it to register your product at <http://www.NETGEAR.com/register>. Registration is required before you can use the telephone support service. Registration at the NETGEAR website is strongly recommended.

Go to <http://support.netgear.com> for product updates and Web support.

For complete DoC please visit the NETGEAR EU Declarations of Conformity website at: [http://kb.netgear.com/app/answers/detail/a\\_id/11621](http://kb.netgear.com/app/answers/detail/a_id/11621)



March 2011



Este equipamento opera em caráter secundário, isto é, não tem direito a proteção contra interferência prejudicial, mesmo de estações do mesmo tipo, e não pode causar interferência a sistemas operando em caráter primário."

© 2011 by NETGEAR, Inc. All rights reserved. NETGEAR and the NETGEAR logo are registered trademarks of NETGEAR, Inc. in the United States and/or other countries. Other brand and product names are trademarks or registered trademarks of their respective holders. Information is subject to change without notice.