

N300 Wireless PCI Adapter WN311B

Estimated completion time: 15 minutes.

Package Contents



Antenna

Wireless PCI Adapter



Resource CD

Installation

1. Insert the *Resource CD* in your computer's CD drive. If the CD Welcome screen does not display, browse the files on the CD and double-click **Autorun.exe**.
2. Click **Install the Software**. The Software Update Check screen displays.
3. If you are connected to the Internet, click **Check for Updates**. If not, then click **Install from CD**.
4. Follow the wizard prompts to install the software.
5. When prompted by the Connection Wizard (as shown), shut down your computer.
6. Unplug your computer, open the case, and install the wireless PCI adapter into a PCI slot.
7. Connect the antenna to the adapter and place the antenna standing up.
8. Close the case, plug the power cord back in, and restart your computer.



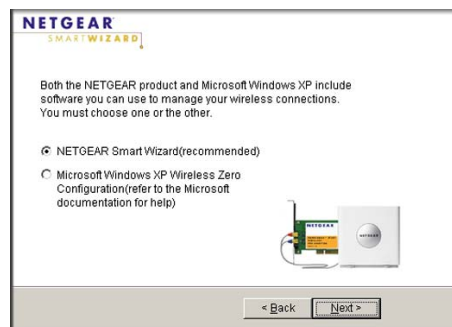
Set Up

When your computer starts up, the Smart Wizard prompts you to select the country where you are located.

1. Select your country and click **Agree**.

Note: If you are using Windows 2000, skip to Step 3.

2. Select either the NETGEAR Smart Wizard (recommended) or the Windows configuration utilities, and click **Next**.
3. You are asked if you want to let the Connection Wizard help you connect to a network (recommended). Click **Next** to accept.



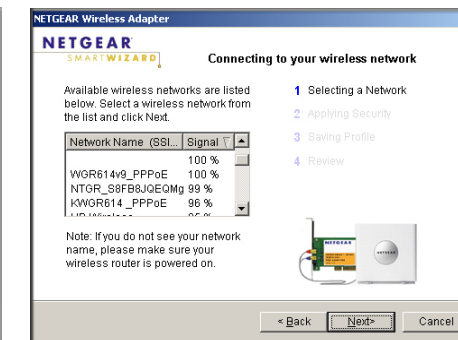
Connecting to a Wireless Network

Note: If you chose to bypass the NETGEAR Smart Wizard and use Windows utilities, see your Windows documentation for help with wireless network connections.

The Smart Wizard prompts you to connect to a wireless network with one of these screens:




WPS network



No WPS

- **WPS network¹:** This network supports Push 'N' Connect (also called WPS). You can follow the steps to use a WPS button or PIN to connect to a secure network without entering a password.
- **No WPS:** Select your wireless network from the list and click **Next**. To connect to a secure network, you must enter its passphrase or network key.

The adapter connects to the network, which can take a minute or two. The Smart Wizard Settings screen displays. Your settings are saved in a profile, which you can name.

The  icon appears in the system tray and on the desktop. You can use it to open the Smart Wizard to make changes or connect to a different wireless network.

1. The wireless PCI adapter supports WPS connections on Windows 7 and Windows XP, but not on Vista or Windows 2000.

Technical Support

Thank you for selecting NETGEAR products.

After installing your device, locate the serial number on the label of your product and use it to register your product at <http://www.NETGEAR.com/register>. Registration is required before you can use our telephone support service. Registration via our website is strongly recommended.

Go to <http://kbserver.netgear.com> for product updates and Web support.

For additional information about setting up, configuring, and using your N300 Wireless PCI Adapter WN311B, see the *User Manual*.

For complete DoC please visit the NETGEAR EU Declarations of Conformity website at: http://kb.netgear.com/app/answers/detail/a_id/11621/.



201-10904-04



June 2010



This symbol was placed in accordance with the European Union Directive 2002/96 on the Waste Electrical and Electronic Equipment (the WEEE Directive). If disposed of within the European Union, this product should be treated and recycled in accordance with the laws of your jurisdiction implementing the WEEE Directive.

©2010 by NETGEAR, Inc. All rights reserved. NETGEAR and the NETGEAR logo are registered trademarks of NETGEAR, Inc. in the United States and/or other countries. Other brand and product names are trademarks or registered trademarks of their respective holders. Information is subject to change without notice.