

NETGEAR[®]

Connect with Innovation[™]

NeoTV Streaming Player (NTV200) Installation Guide



© 2012 NETGEAR, Inc. All rights reserved.

No part of this publication may be reproduced, transmitted, transcribed, stored in a retrieval system, or translated into any language in any form or by any means without the written permission of NETGEAR, Inc.

Technical Support

Thank you for choosing NETGEAR. To register your product, get the latest product updates, or get support online, visit us at <http://support.netgear.com>.

Phone (US only): 1-888-NETGEAR

Phone (Other Countries):

See http://support.netgear.com/app/answers/detail/a_id/984.

Trademarks

NETGEAR, the NETGEAR logo, ReadyNAS, ProSafe, Smart Wizard, Auto Uplink, X-RAID2, and NeoTV are trademarks or registered trademarks of NETGEAR, Inc. Microsoft, Windows, Windows NT, and Vista are registered trademarks of Microsoft Corporation. Other brand and product names are registered trademarks or trademarks of their respective holders.

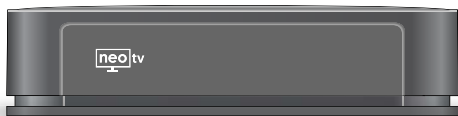
HDMI, the HDMI Logo, and HighDefinition Multimedia Interface are trademarks or registered trademarks of HDMI Licensing LLC in the United States and other countries.

Manufactured under license from Dolby laboratories. Dolby and the double-D symbol are trademarks of Dolby Laboratories.

Statement of Conditions

In the interest of improving internal design, operational function, and/or reliability, NETGEAR reserves the right to make changes to the products described in this document without notice. NETGEAR does not assume any liability that may occur due to the use or application of the product(s) or circuit layout(s) described herein.

What's Included in the Box



NeoTV Streaming Player



Power adapter

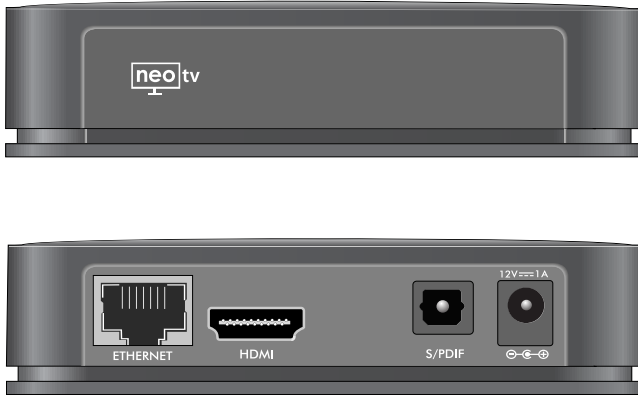


Installation guide



**Remote control
with
batteries**

Front and Rear Views

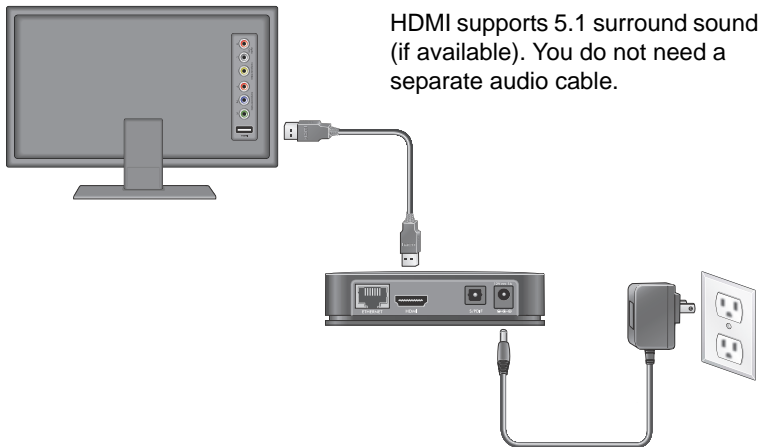


What You Need to Use Your NeoTV Player

- TV with HDMI port
- HDMI cable
- Broadband Internet connection
- A wireless or wired network
- Device with Internet browser for service activation

Connect to the TV

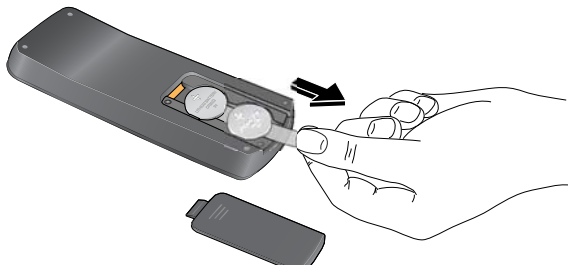
1. Make sure that your TV is on and set to display the correct video input.
2. Connect an HDMI cable (sold separately) to the HDMI port on your player and to the **HDMI IN** port on your TV.



3. Connect the power adapter to your player, and plug it into an electrical outlet.

Remote Control Batteries

To use the remote control, remove the plastic strip beneath the batteries as shown.



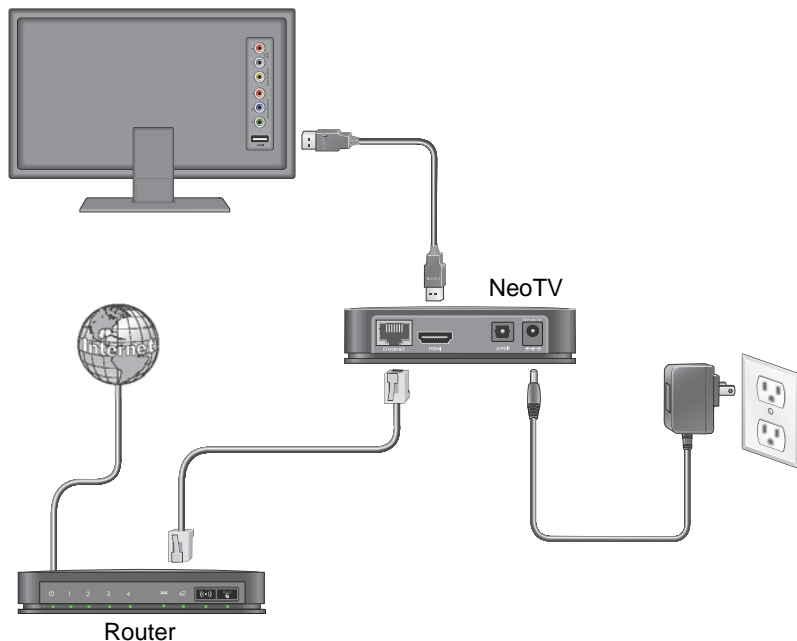
Connect to Your Home Network

To use your player, you need to connect it to your home network with either a wireless or a wired connection. After you get your network ready, the onscreen guided setup helps you connect your player to your network.

IMPORTANT: Do not place anything on top of your NeoTV player. Placing objects on top of your player can interfere with the wireless signal or cause the player to overheat.

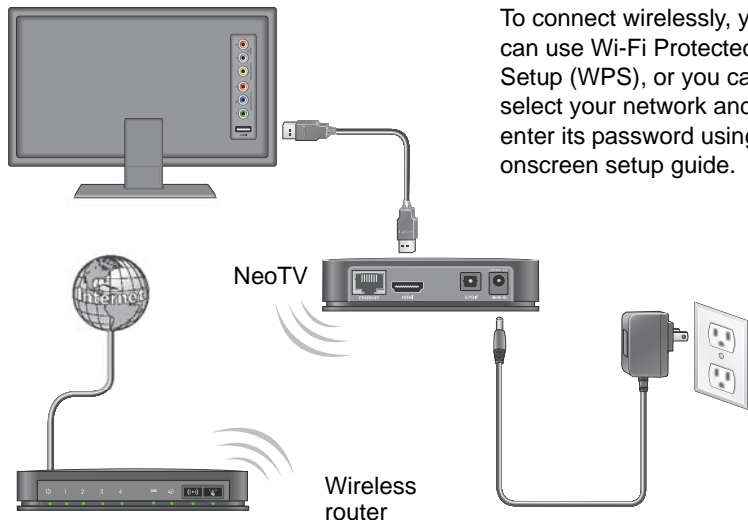
Wired Connection

Use an Ethernet cable (sold separately) to connect your player to a LAN port on your router.



Wireless Connection

If you are using a wireless connection, place your player within range of your wireless network. For best wireless reception, avoid enclosing your player in a cabinet.



If you do not receive a strong signal during the onscreen setup, rotate your player or move it closer to your router.

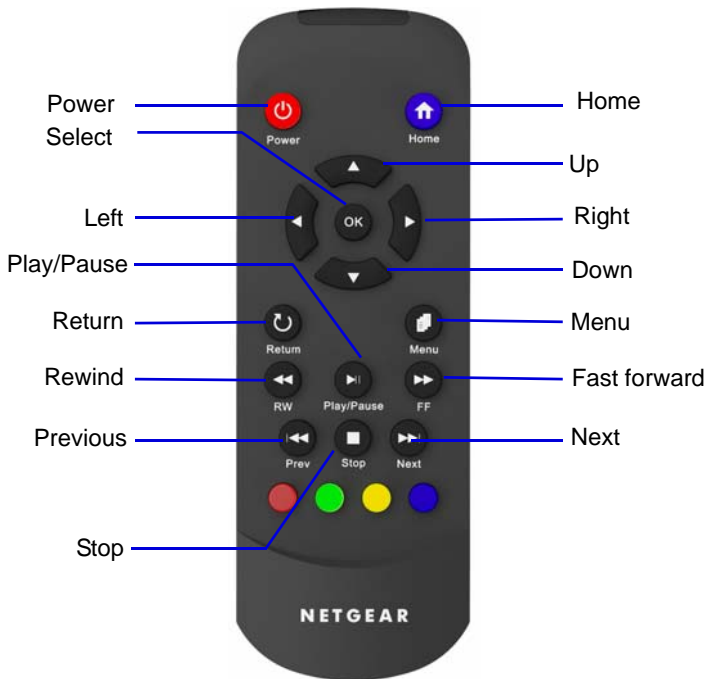
Onscreen Guided Setup

On your TV:

- Use the remote control to follow the NeoTV onscreen setup instructions, which include setting the output resolution to the TV, and the standby timing, connecting to a network, and checking for the latest NeoTV software update.
- Your player might download software updates or restart during setup.
- Once you complete setup, select a channel icon (such as Netflix or Pandora) to enjoy the content.



Remote Control



Remote Control App

NeoTV Remote app turns your iPhone or Android phone into a NeoTV Streaming Player remote control.



To Install the Remote Control App

1. Using your iPhone or Android smartphone, navigate to the Apple AppStore or Android Market, and search for NeoTV Remote. You can use the following QR codes to speed up this process:



Apple App Store



Android Market

2. Install the app on your phone.
3. Make sure that the phone is connected to the same WiFi network (SSID) as your NeoTV Streaming Player.
4. Launch the app, and it searches for your device and connects.

Technical Support

Thank you for selecting NETGEAR products.

After installing your device, locate the serial number on the label of your product and use it to register your product at www.NETGEAR.com/register. Registration is required before you can use our telephone support service. Registration through our website is strongly recommended.

Go to <http://support.netgear.com> for product updates and web support.

GPL might be included in this product; to view the GPL license agreement, go to <ftp://downloads.netgear.com/files/GPLnotice.pdf>.

Warning: DO NOT stack equipment, or place equipment in tight spaces, in drawers, or on carpets. Make sure your equipment is surrounded by at least 2 inches of air space.

NETGEAR, Inc.

350 East Plumeria Drive
San Jose, CA 95134, USA



201-13712-04

February 2012