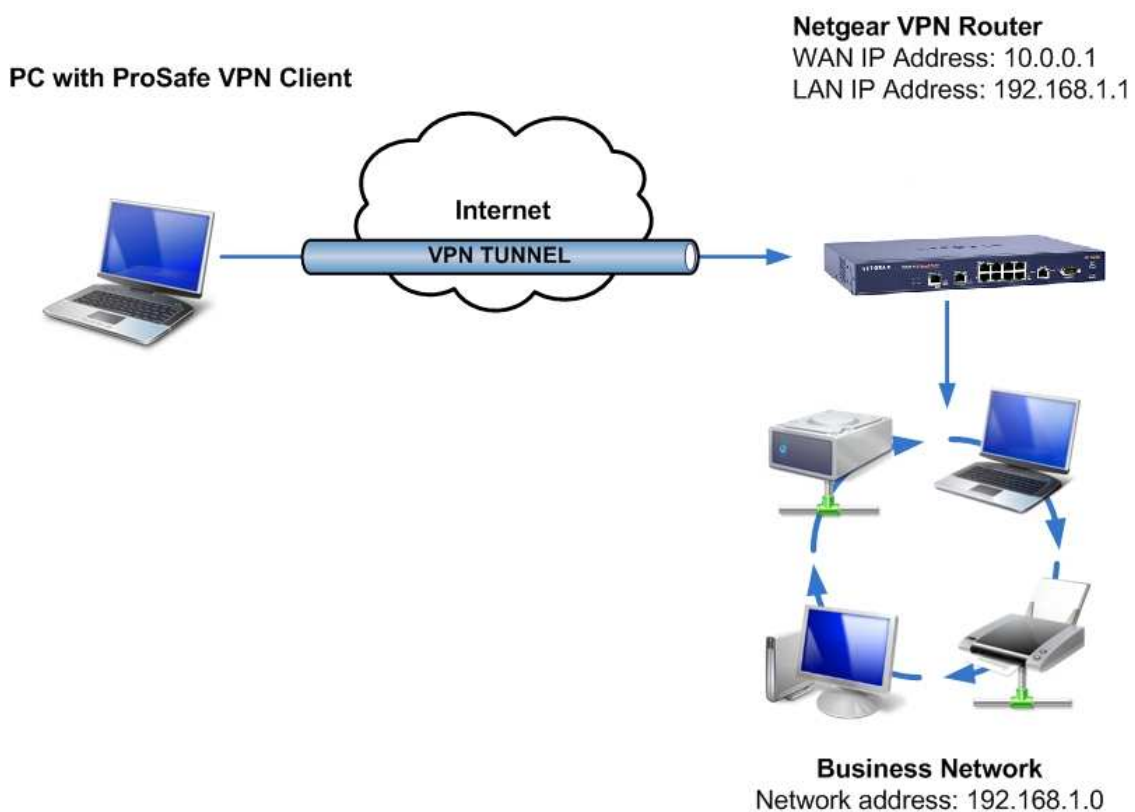




VPN Configuration of ProSafe VPN Lite software and NETGEAR ProSafe Router:

This document will guide you on how to create IKE and auto-VPN policies for your ProSafe NETGEAR Router, as well as how to configure the ProSafe VPN Lite Client in order to allow a Virtual Private Network to be established over the Internet.



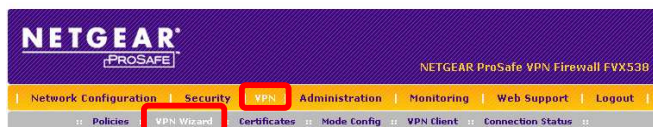
NOTE: This document assumes that your router is either receiving a public IP address on the WAN interface or that the gateway device(s) have the correct port forwarding or DMZ configured so that port 500 UDP is open for the router, these gateway devices must also allow VPN pass-through.

Router Settings:

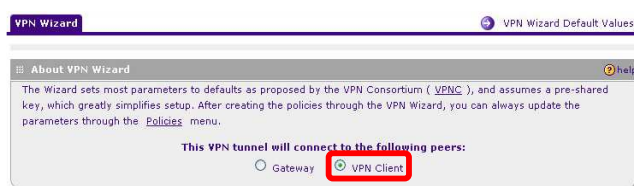
As we configure the NETGEAR VPN Router, there will be information we'll add which will later be used in the configuration of the ProSafe VPN Lite Client. This information will be marked with red-numbered circles. You can print this form to help keep track of this information.

- 1 Pre-Shared Key: _____
- 2 Remote Identifier Information: _____
- 3 Local Identifier Information: _____
- 4 Router's LAN Network IP Address: _____
- 5 Router's LAN Network Mask: _____
- 6 Router's WAN IP Address: _____

Creation of the VPN Policy on the ProSafe Router:

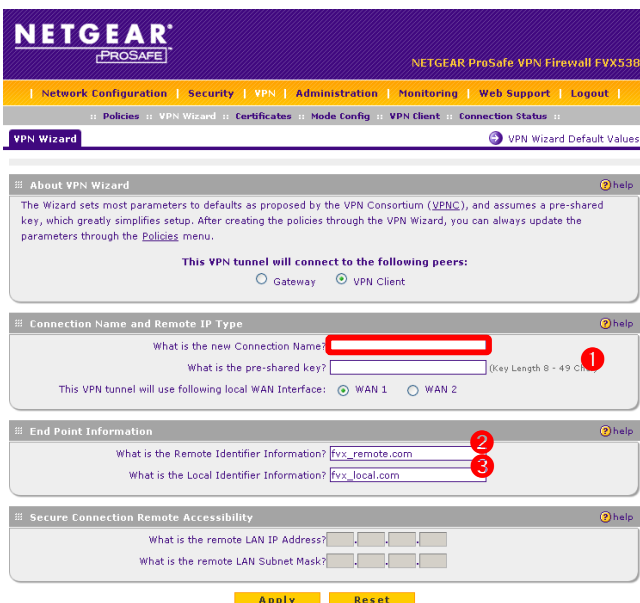


- From the Router's GUI, go to the VPN section and then select the VPN wizard.



- Select the VPN Client option.

The following fields will now be available:



- **Connection Name:** The name can be any alphanumeric string. The name identifies your tunnel, but it bears no relevance to the connection.
- 1 **Pre-Shared Key:** The pre-shared key can be any alphanumeric string from 8 to 49 characters long.
- 2 **Remote Identifier Information:** The Remote Identifier can be any alphanumeric string. It is a name that identifies the remote peer (Client) in the VPN Connection. You can leave the default or create your own identifier.
- 3 **Local Identifier Information:** The Local Identifier can be any alphanumeric string. It is a name that identifies the local peer (Router) in the VPN Connection. You can leave the default or create your own identifier.
- **WAN Interface:** If your router has more than one WAN Interface, you'll be prompted to select which interface to use for the VPN Tunnel.

Once you apply, you will see the policy we created in the list of VPN Policies. Make note of the following:

Operation succeeded.

List of VPN Policies								Help
#	Name	Type	Local	Remote	Auth	Encr	Action	
1	VPN*	Auto Policy	192.168.1.0/255.255.255.0	Any	SHA-1	3DES	edit	

* Client Policy

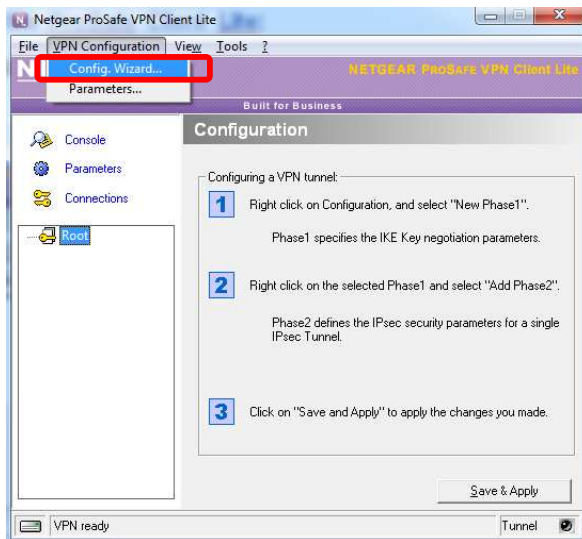
select all | delete | enable | disable | add ...

4 Router's LAN Network IP Address: The first segment in the "Local" box. In our screenshot described as 192.168.1.0 – but may change depending on the setup of your router.

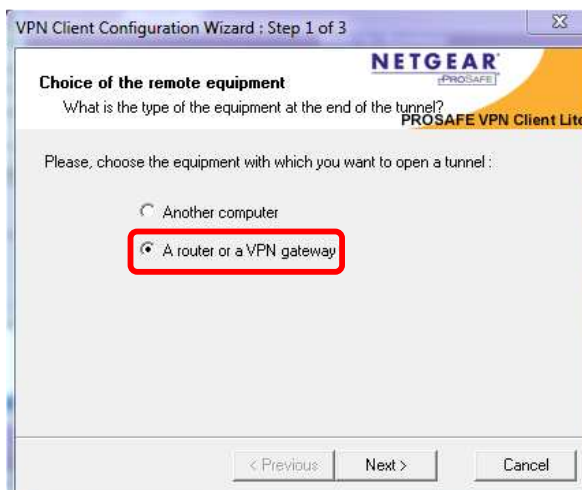
5 Router's LAN Network Mask: The second segment in the "Local" box. In our screenshot described as 255.255.255.0 – but may change depending on the setup of your router.

NOTE: The values you used for the fields marked with red circles will be referenced with the same circled numbers while configuring the ProSafe VPN Lite Client software.

Creation of the VPN Policy on the ProSafe Lite Client:



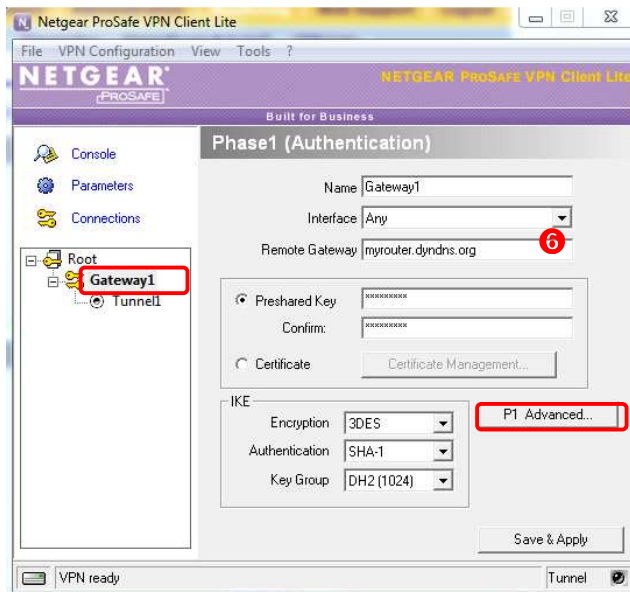
- After installing and activating the VPN Lite Client software, right-click on the VPN Client tray icon and select **Configuration Panel**.
- Select **Config Wizard** from the **VPN Configuration** option in the menu.



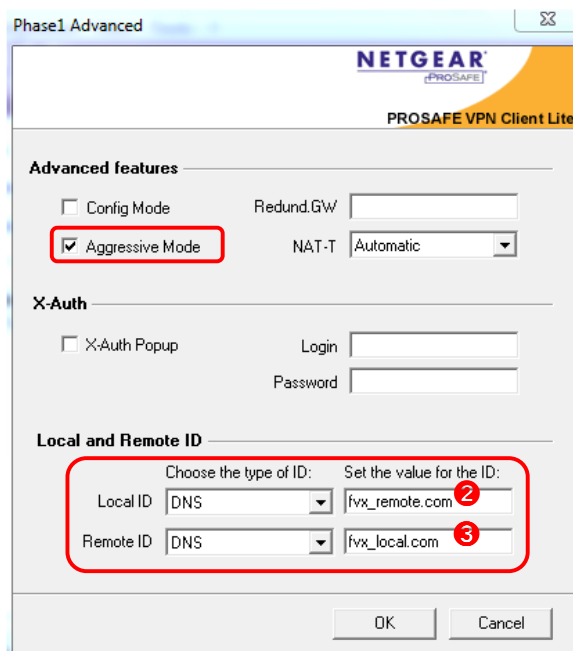
- Select **“A router or a VPN gateway”** to create a new policy to establish a Client-to-Box connection with a NETGEAR router or VPN gateway.

- 6 The IP or DNS public address of the remote equipment will be the value of your **Router's WAN IP** or FQDN.
- 1 Input the PreShared Key used when creating the VPN Policy on the Router.
- 4 The value of the Internal IP address of remote network field will be the value of your remote **Router's LAN Network IP Subnet**.

- Review the **Configuration Summary** and click **Finish** once you have confirmed that all the information is correct.



- A new policy should be added under Root.
- Verify the Remote Gateway to make sure that it is the remote **Router's WAN IP** or FQDN.
- Click on the policy name, then select the **P1 Advanced** button.



- Check **Aggressive Mode**.
- ② Select DNS and enter the router's **Remote Identifier Information**.
- ③ Select DNS and enter the router's **Local Identifier Information**.
- Click **OK** to go back to the **Phase1 (Authentication)** screen.
- Click **Save & Apply** to save the settings

Connecting:

To connect and establish the VPN tunnel between the VPN Lite Client and the remote router, click on **Tunnel1**, then **Open Tunnel**. If your settings are correct you'll receive a message confirming the connection.

