

Start Here

Follow these instructions to set up your smart switch. Before proceeding with the smart switch installation, familiarize yourself with the contents of the Resource CD, especially the reference manuals on your *Resource CD*.

First, Verify Package Contents

- NETGEAR Smart Switch
- Rubber footpads for tabletop installation
- Power cord
- Rack-mount kit for installing the switch in a 19-inch rack
- Installation Guide
- Smart Switch *Resource CD* that includes the Smartwizard Discovery utility and *GS700TR Series Hardware Installation Guide*. (A link to the online *GS700TR Software Administration User's Manual* is on the *Resource CD*.)
- Warranty/Support Information Card.

Then, Prepare to Install Your Smart Switch

Prepare a PC with an Ethernet adapter and a CD ROM drive.

Next, Install the Smartwizard Discovery Utility on a PC

1. Insert the resource CD into your CD drive.

2. Run the Setup program to install the Smartwizard Discovery. The Installation Wizard will guide you through.

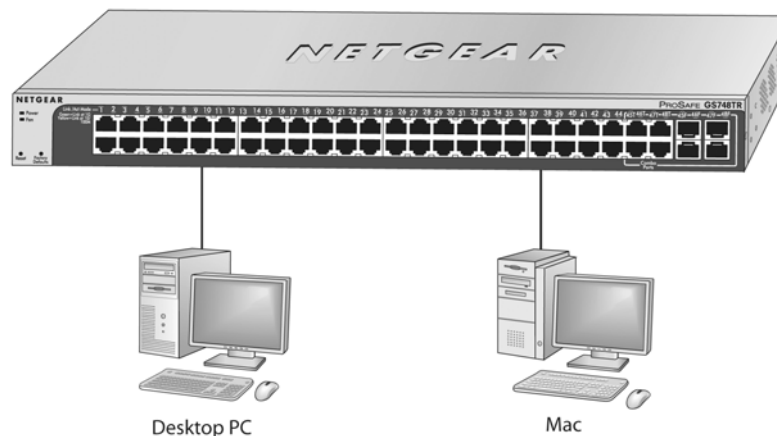
Next, Connect Your Smart Switch in the Correct Order

These instructions assume you are using DHCP in your network. If you are using static IP addressing in your network, configure the switch IP address before connecting it to your network. In the absence of a DHCP server, the switch will default to **192.168.0.239** for its IP address.

To configure the switch before connecting it to your network:

1. Set up the PC with a Static IP address in the **192.168.0.x** subnet, and connect the PC to the switch. Then, use the Smartwizard Discovery utility to configure the switch.
2. Connect each PC to an RJ-45 network port on the Switch front panel.

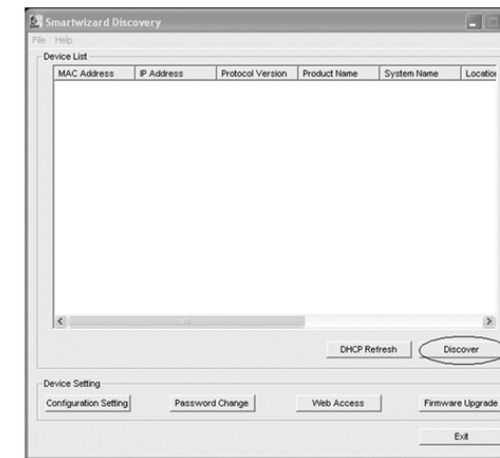
Use category 5 (Cat5) unshielded twisted-pair (UTP) cable terminated with an RJ-45 connector to make these connections.



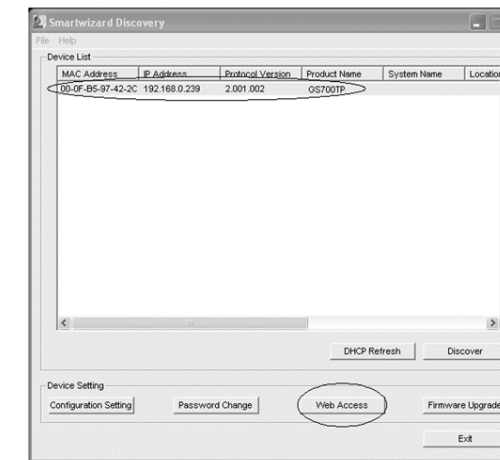
3. Connect the smart switch to your network.
4. Power on the switch.
5. Verify that the PC with the Smartwizard Discovery utility is on the same subnet as the switch.

Now, Configure the Switch with the Smartwizard

1. Click **Start > Programs** and select the Smartwizard utility.



2. Click **Discover** to find your switch in the network.



The Smartwizard Discovery utility finds the switch and displays its MAC Address, IP Address, and model number. If you cannot configure your switch, verify that the

cable connections are secure, and that the IP address configuration of the PC is in the same subnet as the switch.

3. Click **Discover** and select the line displaying the details of your switch.

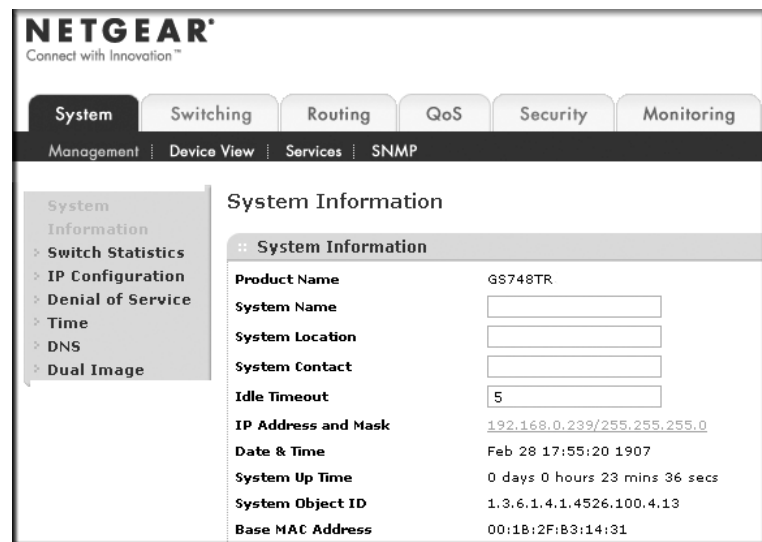
If there are multiple smart switches in your network, be sure to select the one you want to configure.

4. Click **Web Access** to view the switch log in screen.



5. Enter the default password of **password** in lower case letters and click **Login**. The main Web Access Menu displays.

6. Configure the switch for your network using the configuration menu options.



Consult the reference manuals on the *Resource CD* or the online help, available from the Help tab, for assistance with configuration procedures.

Troubleshooting Tips

Following are some tips for correcting simple problems you may have.

- Be sure to power on your PC and smart switch in the correct sequence.
- Follow this sequence. Turn off the smart switch and computer. First, turn on the smart switch and wait two minutes. Next turn on the computer.

Ensure the Ethernet cables are securely plugged in.

- For each powered on computer connected to the smart switch with a securely plugged in Ethernet cable, the corresponding smart switch LAN port status light will be lit.

Ensure the network settings of the computer are correct.

- In most cases, computers should be configured to obtain an IP address automatically via DHCP. For help with this, please see the animated tutorials on the CD or the “Troubleshooting” chapter in the *Hardware Reference Manual* on the *Resource CD*.
- If your network uses static IP addresses, be sure the switch and computer are configured with valid IP addresses.

Technical Support

Thank you for selecting NETGEAR products.

After completing setup and configuration, locate the serial number on the bottom label of the Smart switch and use it to register your product at <http://www.netgear.com/register>.

Registration on the web site or over the phone is required before you can use our telephone support service. The phone numbers for worldwide regional customer support centers are on the Warranty and Support Information card that came with your product.

Go to <http://www.netgear.com/support> for product updates and web support.



201-11145-01

December 2007



This symbol was placed in accordance with the European Union Directive 2002/96 on the Waste Electrical and Electronic Equipment (the WEEE Directive). If disposed of within the European Union, this product should be treated and recycled in accordance with the laws of your jurisdiction implementing the WEEE Directive.

© 2007 by NETGEAR, Inc. All rights reserved. NETGEAR and the NETGEAR logo are registered trademarks of NETGEAR, Inc. in the United States and/or other countries. Other brand and product names are trademarks or registered trademarks of their respective holders. Information is subject to change without notice.