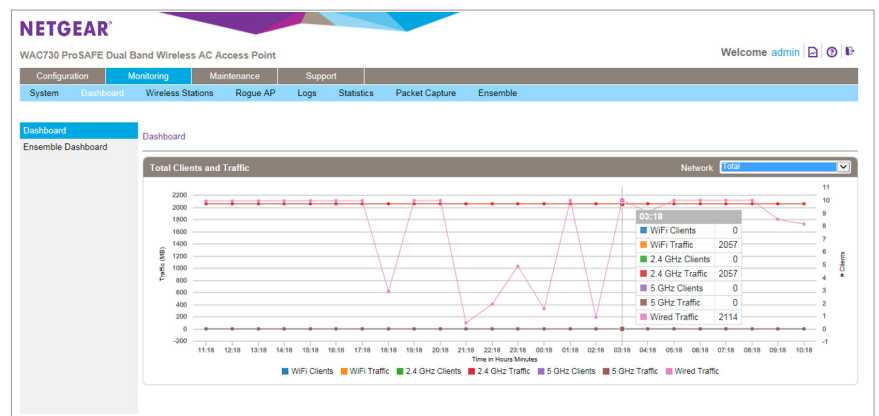
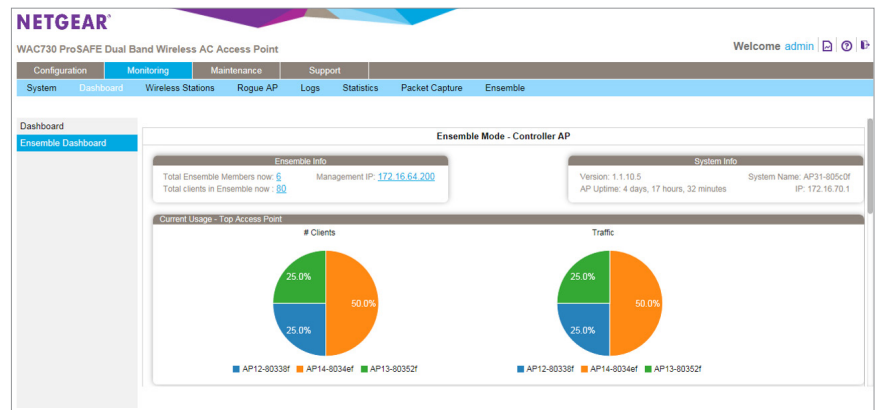




High Performance 802.11ac Wireless Access Point for Multimedia content with Quad Mode Management

The NETGEAR® ProSAFE® WAC730 is a high performance 3 x 3 business class dual band 802.11ac wireless Access Point (AP) that can support an aggregate throughput of up to 1.75Gbps (450Mbps for 2.4GHz and 1.3Gbps 802.11ac for 5 GHz). Equipped with industry unique capability of Quad Mode management, allowing user to flexibly switch access point from one management mode to another without complexity. Quad Mode management enables WAC730 to operate in standalone, ensemble, controller, and Business central modes, based on the required deployment scenario.

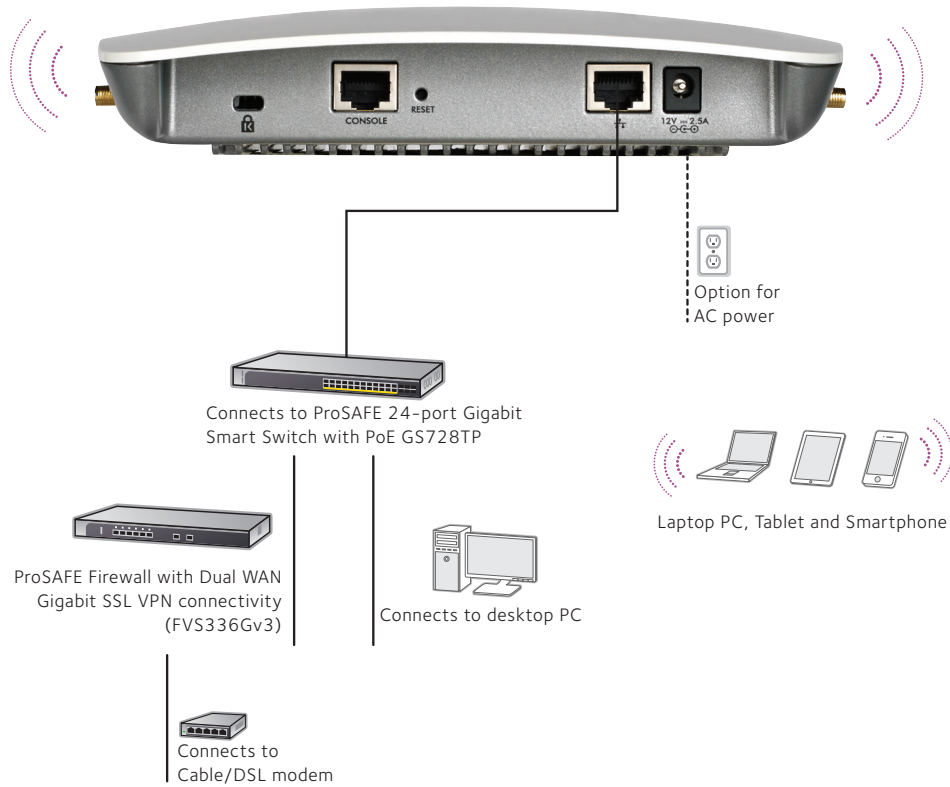
- Maximize the use of wireless medium for delivery of high throughput content
- Reliable wireless coverage with 3 streams of data based on 3 x 3 (Transmit and Receive) optimized internal antennas
- Compact and elegant design stylishly blends into the environment
- Concurrent operation in 2.4GHz (450Mbps) and 5GHz (1.3Gbps) for maximum wireless throughput
- Backward compatibility with 802.11a, 802.11b, 802.11g, and 802.11n network devices
- Integrated Power over Ethernet (IEEE 802.3af PoE) lowers deployment costs
- Ensemble mode management with support of up to 10 Access Points without the need for a controller
- Controller management by WC7600 and WC9500 allowing centralized management up to 600 Access Points in a cluster of controllers.
- Business Central management allowing Access Point to be centrally managed with secured and flexible cloud platform.
- Deploy wireless coverage over large areas with point-to-point and point-to-multipoint bridging via Wireless Distribution System (WDS)
- Business-class security features include WPA, WPA2, rogue AP detection and 802.1x with RADIUS support
- Easy mounting mechanism for quick wall or ceiling installation
- Internal antennas factory-optimized for maximum RF performance
- Antenna take-offs enable optional accessory antenna attachment for 2.4GHz and/or 5GHz operations



Intuitive dashboards of Ensemble Mode



Target Applications



Product Comparison

Features	WAC505	WAC510	WAC720	WAC730	WAC740
Frequency	2.4GHz and 5GHz	2.4GHz and 5GHz	2.4GHz and 5GHz	2.4GHz and 5GHz	2.4GHz and 5GHz
Wireless Mode (Transmit x Receive)	802.11ac (2x2)	802.11ac (2x2)	802.11ac (2x2)	802.11ac (3x3)	802.11ac (4x4)
802.11ac Wave	Wave 2	Wave 2	Wave 1	Wave 1	Wave 2
Multi-User MIMO	Yes	Yes	No	No	Yes
Maximum Theoretical Throughput	1.2Gbps AC1200	1.3Gbps AC1300	1.2Gbps AC1200	1.7Gbps AC1700	2.3Gbps AC2300
Maximum Throughput (2.4/5GHz)	300/867Mbps (2.4/5GHz)	400/867Mbps (2.4/5GHz)	300/867Mbps (2.4/5GHz)	450/1300Mbps (2.4/5GHz)	600/1700Mbps (2.4/5GHz)
Power over Ethernet (PoE) IEEE 802.3af	Yes	Yes	Yes	Yes	Yes, PoE+
PoE Power Consumption	8.9 Watts	9.3 Watts	11.0 Watts	12.9 Watts	17.9 Watts
Centralized Management	Insight App, Standalone	Insight App, Standalone	Quad Mode Management (Standalone, Ensemble™, Controller, and Business Central)	Quad Mode Management (Standalone, Ensemble™, Controller, and Business Central)	Controller
SNMP	v1, v2c	v1, v2c	v1, v2c	v1, v2c	v1, v2c
Secure SSH	Yes	Yes	Yes	Yes	Yes
Secure Socket Layer (SSL)	Yes	Yes	Yes	Yes	Yes
Router Mode	No	Yes	No	No	No
Wireless Distribution System (WDS)					
Repeater	Yes	Yes	Yes	Yes	No
Bridge point-to-point/multi-point	Yes	Yes	Yes	Yes	No
Simultaneous bridge & wireless client association	Yes	Yes	Yes	Yes	No
Antenna	Internal 3/4dBi (2.4/5GHz)	Internal 3/5dBi (2.4/5GHz)	Internal 5/6dBi (2.4/5GHz) Three (3) External reverse SMA connectors for 2.4/5GHz antennas	Internal 5/6dBi (2.4/5GHz) Two (2) External reverse SMA connectors for 2.4/5GHz antennas	Internal 5/6dBi (2.4/5GHz) four (4) External reverse SMA connectors for 2.4/5GHz antennas
Security					
WiFi Protected Access (WPA/WPA2), 802.11i	Yes	Yes	Yes	Yes	Yes
MAC address filtering with access control	Yes	Yes	Yes	Yes	Yes
802.1x RADIUS support with EAP TLS, TTLS, PEAP	Yes	Yes	Yes	Yes	Yes
Rogue AP detection	Yes	Yes	Yes	Yes	Yes
Block SSID Broadcast	Yes	Yes	Yes	Yes	Yes
VLAN Support	Yes	Yes	Yes	Yes	Yes
Guest Network/Captive Portal	Yes	Yes	Yes	Yes	Yes
Accepts external antennas	No	No	Yes	Yes	Yes
Easy ceiling mounting/wall mouting	Yes	Yes	Yes	Yes	Yes
Bandwidth management	Yes	Yes	Yes	Yes	Yes
Bonjour Gateway	No	No	Yes	Yes	Yes
Link Layer Discovery Protocol	Yes	Yes	Yes	Yes	Yes
Bandsteering	Yes	Yes	Yes	Yes	Yes

Technical Specifications

Wireless Characteristics

Standards

- IEEE 802.11ac Wave 1 standard
- WMM Wireless Multimedia Prioritization
- WDS Wireless Distribution System
- Power over Ethernet (PoE) IEEE 802.3af/802.3at

Physical Specifications

- Physical Dimensions (W x D x H): 197 x 197 x 40mm (7.76 x 7.76 x 1.57in)
- Weight: 726g (1.6lb)

Physical Interfaces

- One (1) 10/100/1000BASE-T Gigabit Ethernet (RJ-45) ports with Auto Uplink™ (Auto MDI-X) with IEEE 802.3af or 802.3at Power over Ethernet (PoE) support
- Power adapter (not included): 12V DC, 2.5A; plug is localized to country of sale
- One (1) console port with RJ45 Interface
- Three (3) reverse SMA antenna connectors for dual band 2.4 and 5GHz external antennas (not included)
- Five (5) LED: Power, Link/ACT, LAN, 2.4GHz, 5GHz

Security

- WiFi Protected Access (WPA, WPA2)
- IEEE 802.1x RADIUS authentication with EAP TLS, TTLS, PEAP
- Wireless access control to identify authorized wireless network devices
- MAC address authentication
- VPN pass-through support
- Secure SSH telnet
- Security Sockets Layer (SSL) remote management login

Management

- Ensemble Management for support of up to 10 like Access Points in a single cluster
- Controller management by WC7600 and WC9500 wireless controllers
- Cloud management through NETGEAR Business Central
- Remote configuration and management through Web browser, SNMP or telnet with command line interface (CLI)
- SNMP management supports SNMP MIB II, 802.11 MIB and proprietary configuration MIB

Advanced Wireless Features

Wireless Distribution System (WDS)

- Bridge mode: Point-to-point wireless WDS mode
- Bridge mode: Point-to-multipoint wireless WDS mode
- Repeater mode
- Adjustable Transmit Power Control (TPC)

Package Contents

- ProSAFE® Business Dual Band Wireless-AC Access Point (WAC730)
- Ethernet cable
- Ceiling and wall mount kit
- Installation guide

Accessories

Power Adapters with plug localized to country of sales

- PAV12V-100AUS (for Australia)
- PAV12V-100EUS (for Europe, outside of UK)
- PAV12V-100NAS (for North America)
- PAV12V-100PRS (for China)
- PAV12V-100UKS (for UK)

NETGEAR Warranty*

- NETGEAR ProSAFE® Lifetime Hardware Warranty.
- ProSUPPORT™ Lifetime Chat Technical Support (Remote diagnostics performed by our technical experts for prompt resolution of technical issues).
- ProSUPPORT 90 days(24/7) Live Phone Technical Support during business hours.
- Lifetime Next Business Day (NBD) Hardware replacement (See <http://onsite.netgear.com> for coverage, availability and terms and conditions).

Ordering Information

- **WAC730-10000S:** Everywhere except U.S and Canada
- **WAC730-100NAS:** U.S and Canada

* This product comes with a lifetime warranty that is valid only if purchased from a NETGEAR authorized reseller, and modifications to product may void the warranty—not software or external power supplies; see <http://www.netgear.com/about/warranty/> for details. Lifetime technical support includes basic phone support for 90 days from purchase date and lifetime online chat support when purchased from a NETGEAR authorized reseller. This product was tested for quality and its components may be recycled. For indoor use only.