



An ideal companion to the rapidly emerging class of 10-gigabit servers, the NETGEAR® ProSAFE® 28-port Gigabit Stackable Smart Managed Switch is the industry's first Smart Managed Switch with 10-gigabit connectivity – delivering maximum throughput in SMB networks for demanding tasks such as data replication and backup, virtualization, video on demand and high-volume transaction processing. At less than half the cost of a managed switch, the ProSAFE 28-Port Gigabit Smart Managed Switch provides 24 gigabit ports for connecting devices to the network, along with four 10GE SFP+ ports for stacking or uplink to servers. GS728TXS is able to be mixed and matched with GS752TXS in the same stack. As many as six switches can be stacked for a total of 300 network ports, with full redundancy for unsurpassed reliability. The GS728TXS offers a rich enterprise-class feature set, including advanced traffic management and security, yet can be easily configured and monitored through a web-based graphical user interface.

Enterprise-Class Features

With a rich set of L2+/Layer 3 Lite management features, the GS728TXS is efficient, secure and ready for the future. Static routing allows for segmentation of the network, with internal routing through the switch – reserving the router for external traffic routing only, making the entire network more efficient. Dynamic VLAN assignment increases security by imposing consistent policy and user credentials across the network, regardless of where users connect. Support for MLD Snooping greatly increase network efficiency by forwarding multicast traffic to designated hosts only, rather than flooding multicast packets across all ports. The GS728TXS also comes with full IPv6 support, comprehensive security and advanced multicast management.

Scalability and Reliability

The GS728TXS is a scalable solution that grows with a business. Starting with a single switch, the stack can grow to six switches with a mixed of GS728TXS and GS752TXS and a total of 300 network ports. Two out of the four 10-gigabit SFP+ ports on each switch can be used to create the stack, a single logical unit with up to 40 Gbps of stacking backplane that can be configured and managed as one switch – speeding up deployment while simplifying administration and maintenance. The stacked switches can be spread across multiple physical locations, by taking advantage of SFP+ fiber-optic connectivity, making the GS728TXS an ideal solution for remote and branch offices. All four 10GE ports can be used for network uplinks to servers and storage devices, or split with two ports for local or distant stacking and two ports for uplinks and link aggregation. Auto failover creates a safety net so that if one switch in the stack fails, all the other switches will be intact.

Flexible Management Options

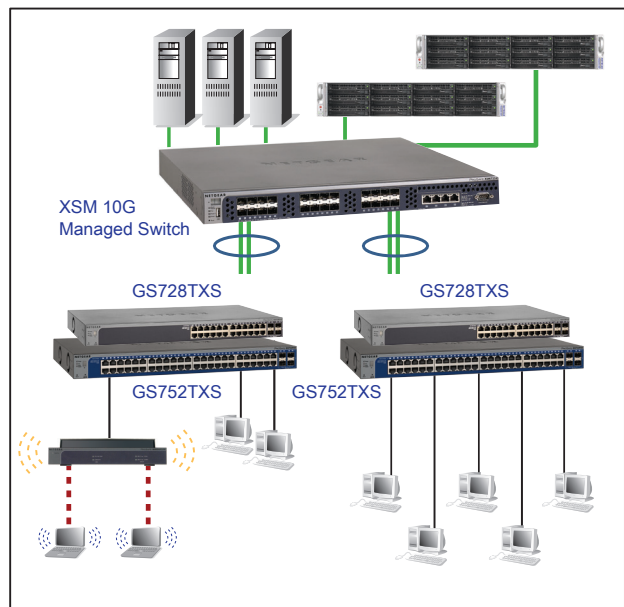
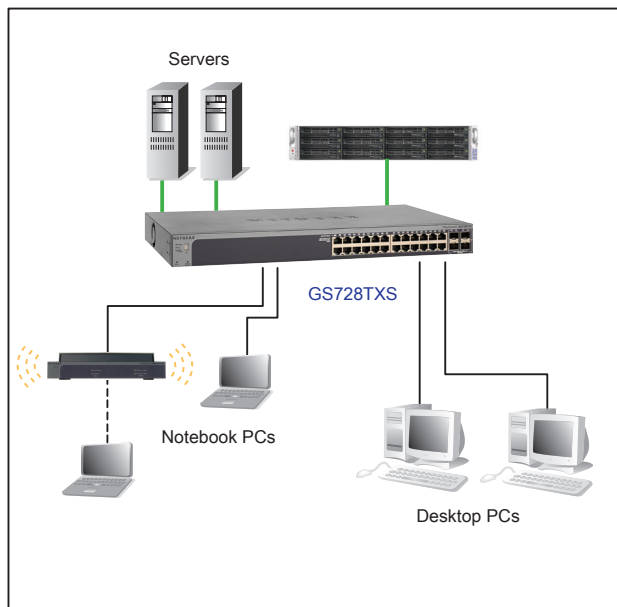
As a “Smart Managed” switch, IT administrators can decide how to manage the GS728TXS. Individual switches can be managed through a simple browser-based graphical user interface. The GS728TXS can also be managed through SNMP software for compatibility with existing SNMP-based consoles. For larger networks, NETGEAR's Smart Control Center, is a free Windows-based application for discovering, configuring and upgrading multiple smart managed switches across the network.

Like all NETGEAR ProSAFE Smart Managed Switches, the GS728TXS is backed by the NETGEAR ProSAFE Lifetime Warranty*, and 1-Year ProSupport 24x7 Advanced Technical Support**.



Features at a Glance

Hardware Main Features	Benefits
10-gigabit connectivity	<ul style="list-style-type: none"> Fully exploits the power of 10GE servers Supports high-bandwidth applications such as data backup and replication, virtualization, video on demand and high-volume transaction processing
Stack up to six switches	<ul style="list-style-type: none"> Fully exploits the power of 10GE servers Supports high-bandwidth applications such as data backup and replication, virtualization, video on demand and high-volume transaction processing Scalable switching that grows with the enterprise Auto failover creates a safety net so that if one switch in the stack fails, all other switches will be intact
Four 10GE SFP+ stacking/uplink ports	<ul style="list-style-type: none"> Up to 40Gbps of stacking backplane Fiber-optic connections allow stacked switches to be placed in multiple physical locations, supporting remote or branch offices
Software Main Features	Benefits
Dynamic VLAN assignment	<ul style="list-style-type: none"> Increases security by imposing consistent policy and user credentials across the network, regardless of where users connect
MLD snooping	<ul style="list-style-type: none"> Increases network efficiency by forwarding multicast traffic to designated hosts only, rather than flooding multicast packets across all ports
Full support for IPv6	<ul style="list-style-type: none"> Protects IT investment by future-proofing the network for the next generation of applications and extensions
DHCP snooping	<ul style="list-style-type: none"> Prevent access layer attacks such as DHCP server attacks, ARP man-in-the-middle attacks and IP/MAC spoofing attacks by using IP-to-MAC binding information
Protected ports	<ul style="list-style-type: none"> Increases security by isolating specific ports from communicating with other ports on the same switch Prevents an attacker from scanning a system to gain valuable services and information
Mixed Stacking between GS728TXS and GS752TXS	<ul style="list-style-type: none"> Provide flexibility in network configuration. Expand your network as you need while ensuring higher usability of network resources



— 10GE link — GE link - - - Wireless link

Technical Specifications

Network Protocol and Standards Compatibility

- IEEE 802.3 10BASE-T
- IEEE 802.3u 100BASE-TX
- IEEE 802.3ab 1000BASE-T
- IEEE 802.3z 1000BASE-X
- IEEE 802.3x full-duplex flow control
- IEEE802.3aq (10GEbase-LRM)
- IEEE802.3ae (10GEbase Ethernet)
- IEEE802.3az (EEE)

Interfaces

- 24 10/100/1000Mbps switching ports
- 4-10GEbps SFP+ slots (port 25-28) to support 10GEbps optical module and 1G optical module
- Port 27 and port 28 can be used as the stacking ports or as uplink ports.
 - Auto-sensing and auto-negotiating capabilities for all copper ports
 - Auto Uplink™ on all ports to make the right connection

Administrative Switch Management

- IEEE 802.1Q VLAN (256 groups, Static)
- IEEE 802.1p Class of Service (CoS)
- 8 hardware queues
- Port-based QoS
- IEEE 802.3ad Static or Dynamic Link Aggregation (LACP)
- IEEE 802.1D Spanning Tree Protocol
- IEEE 802.1w Rapid Spanning Tree Protocol
- IEEE 802.1s Multiple Spanning Tree Protocol
- SNMP v1, v2c, v3
- RFC 1213 MIB II
- RFC 1643 Ethernet Interface MIB
- RFC 1493 Bridge MIB
- RFC 2131 DHCP client
- IEEE 802.1x (RADIUS)

- IEEE 802.1x Dynamic VLAN Assignment
- HTTPS/SSL: Secure HTTP GUI
- RADIUS accounting
- Layer 3 (DSCP) Quality of Service (QoS)
- TACACS+
- Port-based security by locked MAC addresses
- TCP/UDP-based priority mapping
- IGMP snooping v1, v2, v3
- MLD Snooping
- ACLs (MAC, IPv4, IPv6 and TCP/UDP based)
- Storm control for broadcast, multicast and unknown unicast packets
- Port-based rate limiting
- SNTP
- DNS
- DoS and Auto DoS prevention
- IPv6 management, multicast and QoS
- Static Routing
- DHCP Snooping
- Green Features: Lower power consumption during link-down mode or EEE mode
- Protocol and MAC based VLAN
- RMON group 1, 2, 3, 9
- Private Enterprise MIB
- Port mirroring – many-to-one
- IEEE 802.3ab LLDP
- LLDP-MED
- Protected ports
- Cable test
- Smart Control Center discovery
- Web-based configuration
- Configuration backup/restore
- Password access control
- Firmware upgradeable

Performance Specifications

- Forwarding modes: Store-and-forward
- Bandwidth: 128Gbps
- Stack up to 6 switches for 300 ports per stack
- Stacking bandwidth: 40Gbps
- Network latency: Less than 20 microseconds for 64-byte frames in store-and-forward mode for 1000 Mbps to 1000 Mbps transmission
- Buffer memory: 2MB
- 128Mbytes system DDR SDRAM (32Mbx16)
- 32Mbytes flash memory
- Address database size: 16K media access control (MAC) addresses per system
- Addressing: 48-bit MAC address
- 256 VLANs; Maximum VLAN id is 4093
- 7 802.1p traffic classes
- 8 LAGs
- 32 static routes
- 15 routed VLANs
- 1024 ARP Cache entries
- 7 queues used for DiffServ
- 100 ACLs (MAC/IPv4/IPv6)
- 8K DHCP snooping binding
- 1024 DHCP static entries
- Mean time between failures (MTBF): 677,816 hours (~77.3 years) at 25°C 200,444 hours (~22.9 years) at 55°C

LEDs

- Unit: Power, master, stack ID, FAN
- Per port: Link, speed, activity

Power Supply

- Max Power consumption: 31.4w
- 100-240V AC/50-60Hz universal input

Technical Specifications (continued)

Physical Specifications

- Dimensions: (h x w x d):
43 x 440 x 257mm
(1.69 x 17.32 x 10.13in)
- Weight: 3.55kg (7.83lbs)
- Acoustic Noise Level @ 25C:
32.9dBA MTBF: 677,816 hours

Environmental Specifications

- Operating temperature: 32° to 104°F
(0° to 50°C)
- Storage temperature: -4° to 158°F
(-20° to 70°C)
- Operating humidity: 95% maximum
relative humidity, non-condensing
- Storage humidity: 95% maximum
relative humidity, non-condensing
- Operating altitude: 10,000 ft (3,000m)
maximum
- Storage altitude: 10,000 ft (3,000m)
maximum

Electromagnetic Compliance

- CE mark, commercial
- FCC Part 15 Class A
- VCCI Class A
- EN 55022 (CISPR 22)
- EN 55024 (CISPR 24)
- C-Tick

Safety

- CE mark, commercial
- CUL 60950 (Listed)/EN 60950
- (Low Voltage Directive)

Warranty and Support*

- ProSAFE Lifetime Warranty*
- Lifetime 24x7 Online Chat
Technical Support
- 90 days (24/7) Live Phone
Technical Support
- Lifetime Next Business Day (NBD)
Hardware Replacement

ProSUPPORT OnCall 24x7, Category 2** Service Packages

- PMB0312 (1 yr.)
- PBM0332 (3 yrs.)
- PMB0352 (5 yrs.)

Package Contents

- ProSAFE® 28-Port Gigabit Stackable
Smart Managed Switch with 10GE
uplinks
- Rubber footpads
- Power cord
- Rack-mount kit
- Resource CD installation guide
- Warranty/support information card

Modules

- AXM761 ProSAFE 10GEBASE-SR
SFP+ GBIC
- AXM762 ProSAFE 10GEBASE-LR
SFP+ GBIC
- AXM763 ProSAFE 10GEBASE-LRM
SFP+ GBIC
- AXC761 1m Direct Attach SFP+ Cable
- AXC763 3m Direct Attach SFP+ Cable
- AGM731F ProSAFE 1000BASE-SX SFP
GBIC: Module with LC connectors for
50um or 62.5um multi-mode fiber cable
- AGM732F ProSAFE 1000BASE-LX SFP
GBIC: Module with LC connectors for
9um single-mode fiber cable
- AGM733 ProSAFE

Ordering Information

- North America: GS728TXS-100NES
- Europe: GS728TXS-100NES
- Asia/Japan: GS728TXS-100AJS
- China: GS728TXS-100PRS

* This product comes with a limited warranty that is valid only if purchased from a NETGEAR authorized reseller, and modifications to product may void the warranty; covers hardware, fans, and internal power supplies—not software or external power supplies; see <http://www.netgear.com/about/warranty/> for details. Lifetime technical support includes basic phone support for 90 days from purchase date and lifetime online chat support when purchased from a NETGEAR authorized reseller.

** The NETGEAR OnCall 24x7 contract provides unlimited phone and email technical support for your networking product. For ProSAFE products purchased prior to 06/2014, also includes next business-day hardware replacement.