



### Gigabit Ethernet for Maximum Performance

- Connects up to 10x faster than Fast Ethernet for maximum performance†
- Move large files such as multimedia, gaming and Internet access across your network at high speeds
- Fanless design for quiet operation
- Plug-and-play installation delivers ease of use

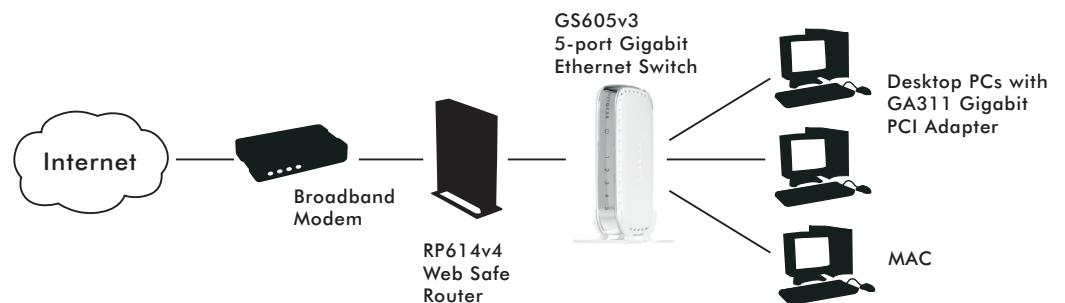
### Features

- Connects up to 5 or 8 devices delivering speeds up to 10x faster than Fast Ethernet†
- Plug-and-play technology
- Dual color LEDs monitor link, speed, and activity
- Supports Fast and Gigabit Ethernet devices with automatic speed-sensing and AutoUplink™ technology
- Supports Windows® and Macintosh® platforms

### Upgrading to Gigabit

Five great reasons to upgrade your network with Gigabit!

1. 10x faster than Fast Ethernet—Gigabit Ethernet delivers speeds of up to 1000 Mbps†
2. Significant boost in performance for bandwidth-intensive applications like video conferencing, video streaming, and gaming
3. Eliminates bottlenecks in your network
4. Backward compatible with 10 Mbps and 100 Mbps network devices
5. Affordable prices make it possible for you to join the technological revolution



## Technical Specifications

### • Network Ports

- GS605: 5 auto-speed sensing UTP ports
- GS608: 8 auto-speed sensing UTP ports

### • Forwarding Mode

- Store-and-forward
- 128K on-chip packet buffering

### • Performance

- Bandwidth:
  - GS605: 10 Gbps (non-blocking)
  - GS608: 16 Gbps (non-blocking)
- Forward Rate (10 Mbps port): 14,800 packets/sec
- Forward Rate (100 Mbps port): 148,000 packets/sec
- Forward Rate (1000 Mbps port): 1,480,000 packets/sec
- Latency @ 10 Mbps - 1250  $\mu$ s (max)
- Latency @ 100 Mbps - 125  $\mu$ s (max)
- Latency @ 1000 Mbps - 15  $\mu$ s (max)
- MAC address database: 4,000
- Mean time between failures (MTBF): 816,000 hours (9 years)

### • AC Power

- 12V AC, 1.0A; Plug is localized to country of sale
- GS605: 12W (12V, 1.0A)
- GS608: 12W (12V, 1.0A)

### • Status LEDs

- System power
- Link, speed and activity indicators for each port

### • Physical Specifications

- Dimensions (w x d x h):
  - GS605: 28.6 x 147 x 95.7mm (1.1 x 5.8 x 3.8in)
  - GS608: 31 x 177 x 117mm (1.2 x 7.0 x 4.6in)
- Weight:
  - GS605: 0.28kg (0.63 lb)
  - GS608: 0.31kg (0.69lb)

### • Environmental Specifications

- Operating temperature: 0° to 40° C (32° to 104° F)
- Operating humidity: 10% to 90% non-condensing
- Storage temperature: 20° to 70° C (-4° to 158° F)
- Storage humidity: 10% to 95% relative humidity

### • Standards Compliance

- IEEE 802.3i 10BASE-T Ethernet
- IEEE 802.3u 100BASE-TX Fast Ethernet
- IEEE 802.3ab 1000BASE-T Gigabit Ethernet
- IEEE 802.1p priority tags
- IEEE 802.3x Full-duplex flow control
- Jumbo frame support (9,000 byte frames)

### • Safety Agency Approvals

- C-Tick, CE Mark

### • Emissions

- FCC Class B and VCCI Class B, MIC

### Warranty

- NETGEAR 2-year Warranty

### System Requirements

- 10 Mbps - UTP Cat 3 (or better)
- 100 Mbps - UTP Cat 5 (or better)
- 1000 Mbps - UTP Cat 5e (or better)
- Gigabit Network card for each PC or server (e.g., NETGEAR GA311)
- Windows®, Mac® OS, NetWare™, Linux®

### Package Contents

- 5-port and 8-port 10/100/1000 Mbps Gigabit Ethernet Switch (GS605v3 or GS608)
- Vertical stand
- Power adapter
- Installation guide
- Warranty/support information card

## NETGEAR Related Products

- Gigabit Ethernet PCI Adapter (GA311)
- Gigabit Ethernet PC Card (GA511)
- 16-port Gigabit Desktop Switch (GS116)

## Ordering Information

### • GS605

- North America: GS605NA
- Australia: GS605AU
- Germany: GS605GR
- UK: GS605UK
- France: GS605FS
- Italy: GS605IS
- Eastern Europe: GS605EE

### • GS608

- North America: GS608NA
- Australia: GS608AU
- Germany: GS608GR
- UK: GS608UK
- France: GS608FS
- Italy: GS608IS

# NETGEAR®

350 E. Plumeria Drive  
San Jose, CA 95134-1911 USA  
1-888-NETGEAR (638-4327)  
E-mail: info@NETGEAR.com  
www.NETGEAR.com

© 2011 NETGEAR, Inc., NETGEAR, the NETGEAR Logo, and Connect with Innovation are trademarks and/or registered trademarks of NETGEAR, Inc. and/or subsidiaries in the United States and/or other countries. Mac and the Mac logo are trademarks of Apple Inc., registered in the U.S. and other countries. Other brand names mentioned herein are for identification purposes only and may be trademarks of their respective holder(s). Information is subject to change without notice. All rights reserved.

\*Actual data throughput will vary. Network conditions and environmental factors, including volume of network traffic, building material and construction, and network overhead, lower actual data throughput rate.