

N150 Wireless Router

WNR1000v3

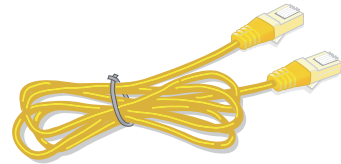
Package Contents:



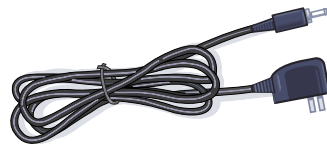
N150 Wireless Router



Router stand



Ethernet cable



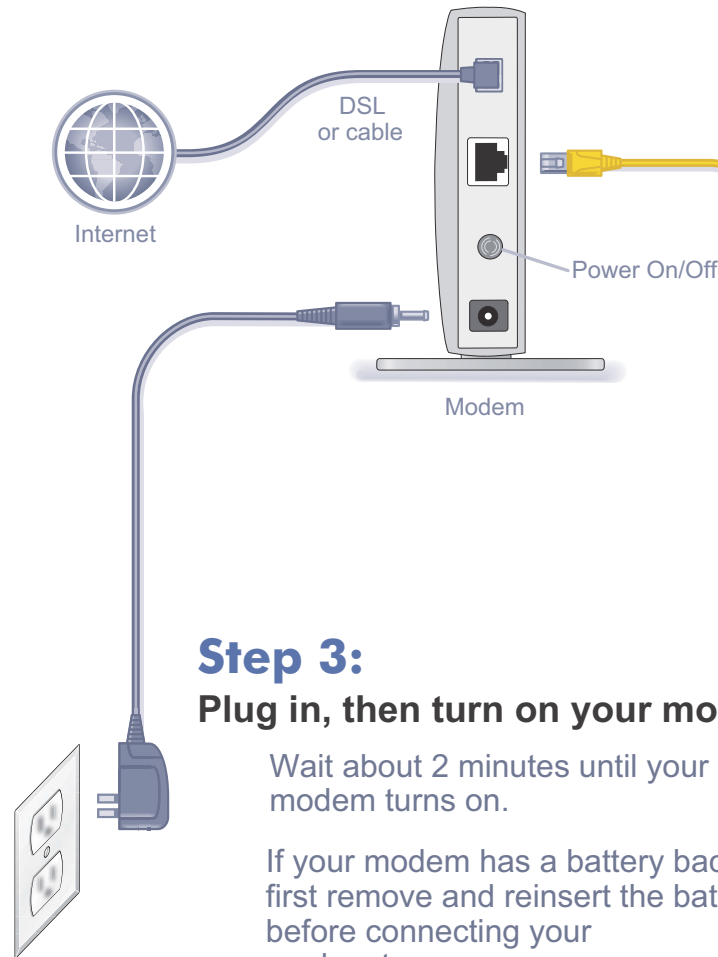
Power adapter

Attach the stand to the router:

1. Place the stand on a level surface.
2. Slide the router onto the stand.



Step 1: Unplug the power to turn off your modem.

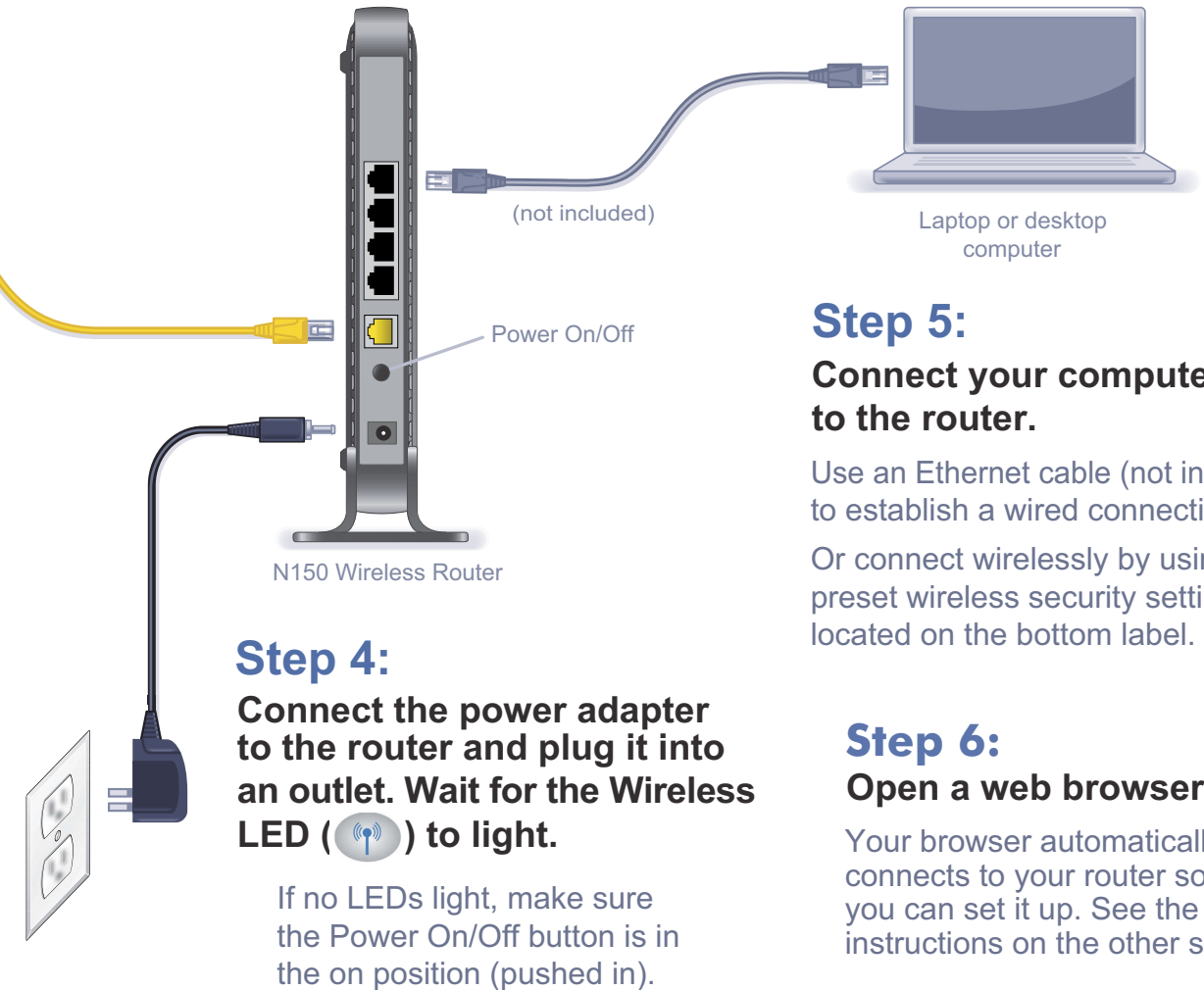


Step 3: Plug in, then turn on your modem.

Wait about 2 minutes until your modem turns on.

If your modem has a battery backup, first remove and reinsert the battery before connecting your modem to power.

Step 2: Connect one end of the yellow Ethernet cable to your modem and the other end to the Internet port.



Step 4: Connect the power adapter to the router and plug it into an outlet. Wait for the Wireless LED () to light.

If no LEDs light, make sure the Power On/Off button is in the on position (pushed in).

Step 5: Connect your computer to the router.

Use an Ethernet cable (not included) to establish a wired connection.

Or connect wirelessly by using the preset wireless security settings located on the bottom label.

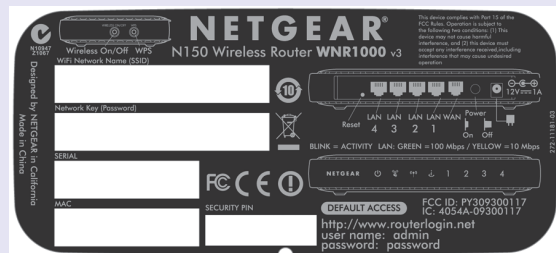
Step 6: Open a web browser.

Your browser automatically connects to your router so you can set it up. See the instructions on the other side.

Preset Wireless Security

This product has a unique WiFi network name (SSID) and network key (password). The default SSID and password are uniquely generated for every device (like a serial number), to protect and maximize your wireless security. This information is located on the label on the bottom of the product.

NETGEAR recommends that you do not change the preset SSID or password. If you do change the settings, the information on the bottom of the product does not apply.



Find the preset wireless settings on your router and record them here:

WiFi network name (SSID) _____

Network key (password) _____

If you change the preset wireless settings, record them here:

Wireless network name (SSID) _____

Network key (password) _____

If necessary to retrieve or update your password, type <http://www.routerlogin.net> in a web browser and log in using the default user name (**admin**) and password (**password**).

Select **Wireless Settings** to locate your wireless password.

Connect Wireless Devices to Your Router


Choose either the manual or WiFi Protected Setup (WPS) method to add wireless computers, and other devices to your wireless network.

Manual Method

1. Open the software utility that manages your wireless connections on the wireless device that you want to connect to your router (iPhone, laptop, computer, gaming device). This utility scans for all wireless networks in your area.
2. Look for the preset NETGEAR wireless network name (SSID), and select it. The SSID is located on the product label on the bottom of the router.
Note: If you changed the name of your network during the setup process, look for that network name.
3. Enter the preset password (or your custom password if you changed it), and click **Connect**.
4. Repeat steps 1–3 to add other wireless devices.

WPS Method

If your wireless device supports WPS (WiFi Protected Setup)—NETGEAR calls this method Push 'N' Connect—you might be prompted to press the WPS button on the router instead of entering a password. If this happens:

1. Press the **WPS** button  on the router.
2. Within 2 minutes, press the **WPS** button on the client device, or follow the WPS instructions that came with your wireless device to complete the WPS process. The device will then be connected to your router.
3. Repeat this process to add other WPS wireless devices.

Note: WPS does not support WEP security. If you try to connect a WEP client to your network using WPS, it will not work.

Troubleshooting

The browser cannot display the web page.

- Make sure that the computer is connected to one of the four LAN Ethernet ports, or wirelessly to the router.
- Make sure that the Wireless LED is lit.
- Close and reopen the browser to make sure that the browser does not cache the previous page.
- Browse to <http://routerlogin.net>.
- If the computer is set to a static or fixed IP address (this is uncommon), change it to obtain an IP address automatically from the router.

NETGEAR recommends that you use only the official NETGEAR support resources.

Support

Thank you for purchasing this NETGEAR product.

After installing your device, locate the serial number on the label of your product and use it to register your product at <https://my.netgear.com>. You must register your product before you can use NETGEAR telephone support. NETGEAR recommends registering your product through the NETGEAR website. For product updates and web support, visit <http://support.netgear.com>. NETGEAR recommends that you use only the official NETGEAR support resources.

You can get the user manual online at <http://downloadcenter.netgear.com> or through a link in the product's user interface. For the current EU Declaration of Conformity, visit http://support.netgear.com/app/answers/detail/a_id/11621/. For regulatory compliance information, visit <http://www.netgear.com/about/regulatory/>. See the regulatory compliance document before connecting the power supply.



Get the genie app.

Download the free genie app from www.NETGEAR.com/genie. Easily share media, files, and printers on the network from your smartphone, tablet, or laptop.



201-13873-04

August 2014

NETGEAR, the NETGEAR logo, and Connect with Innovation are trademarks and/or registered trademarks of NETGEAR, Inc. and/or its subsidiaries in the United States and/or other countries. Information is subject to change without notice. © NETGEAR, Inc. All rights reserved.