

NETGEAR RangeMax™ Dual Band Wireless-N USB Adapter WNDA3100

These setup instructions assume that you will connect to an access point or wireless router.

Estimated completion time: 10 minutes.

Installation

To complete this installation you must:

1. Install the WNDA3100 software.
2. When prompted, insert the wireless USB adapter and follow the Windows XP Found New Hardware wizard prompts (unless using Vista).
3. Set up the wireless USB adapter to connect to your wireless network.

1. Install the NETGEAR WNDA3100 software.

Insert the *Resource CD*. If the CD main page does not display, browse the files on the CD and double-click **Autorun.exe**.

- a. Click **Install the Software**. The Software Update Check screen displays.
- b. NETGEAR recommends that you upgrade when new firmware is available. If you are connected to the Internet, click **Check for Updates**. If not, install from the CD.

The NETGEAR Smart Wizard Welcome screen displays.

- c. Follow the onscreen instructions to install the NETGEAR WNDA3100 software.
 - For Windows XP, if a Windows logo testing message appears, click **Continue Anyway**.
 - If a message that Windows Vista cannot verify the publisher of this driver displays, click **Install this driver software anyway**.
- d. When the NETGEAR Smart Wizard Installation Complete screen displays, click **Next**.



2. Insert the USB adapter.

After you have installed the NETGEAR Smart Wizard, the following screen displays:



- a. Insert the wireless adapter in a USB port on your computer.
 - For best results, put the wireless adapter at least 4 feet (1 meter) away from your router.
 - To use the USB cable, connect it to the wireless USB adapter and a USB port. See “Placing the USB Adapter Cradle” on the other side of this document.
- b. For Windows Vista computers, the adapter and driver are automatically added. Click **Next** and then go to Step 3. For Windows XP computers, the Found New Hardware Wizard displays.
- c. Follow the onscreen instructions for the Found New Hardware Wizard.
- d. When the NETGEAR Smart Wizard screen returns, click **Next**.

3. Use the Smart Wizard to set up your wireless USB adapter.

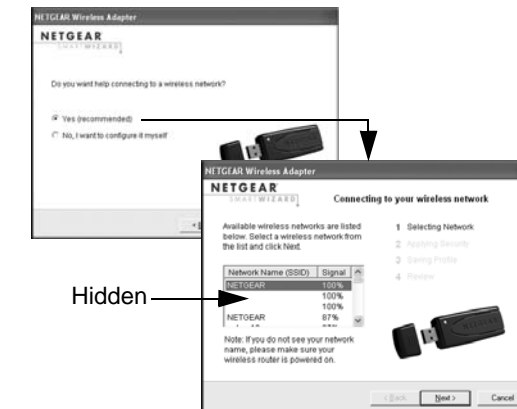
- a. Windows XP or Vista users can set up the wireless adapter either with the NETGEAR Smart Wizard (recommended) or the Windows configuration utilities.
 - **NETGEAR Smart Wizard.** Reveals more information about each network and makes it easier to troubleshoot network connection problems.
 - **Windows configuration utilities.** See the Windows documentation or the NETGEAR application note at: <http://documentation.netgear.com/reference/enu/winzerocfg/index.htm>.



- b. Click **Next**.

You are prompted to let the wizard help you connect to a network (recommended).


- c. Click **Next** to proceed.



Connecting to a Wireless Network

To use the Connection Wizard:

1. Select a wireless network from the drop-down list. The wizard records your choice.
 - Note:** Hidden networks do not broadcast the network name (SSID). These networks are in the drop-down list, but the Network Name (SSID) field is blank.
 - If the network uses security, then the Smart Wizard detects it.
2. Follow the wizard steps for security (if used) and for saving a profile.
3. After you have reviewed the settings, click **Finish**.

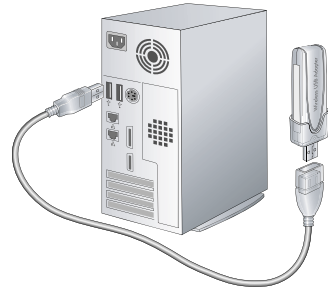
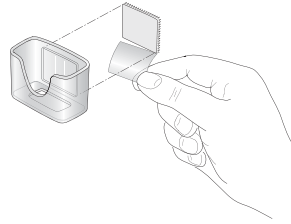
The WNDA3100 icon  appears in the system tray and on the desktop; the Settings tab displays. The wizard initiates your wireless connection. It could take up to a minute for your wireless connection to be established. Check the status bar. See “Using the Status Bar” on the other side of this document.

Placing the USB Adapter Cradle

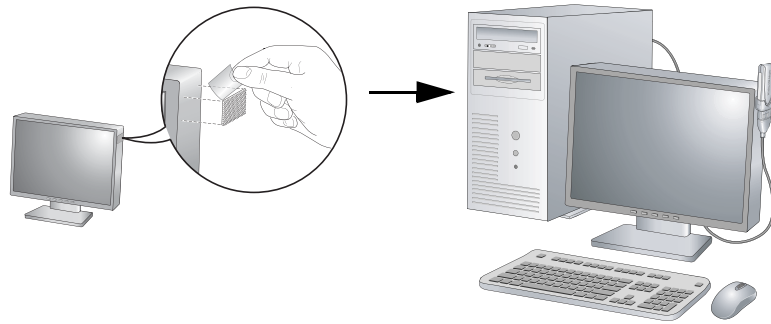
You can attach the wireless USB adapter directly to a USB port on your computer, or use the USB cable to extend the range and obtain better wireless reception.

To use the USB cable, plastic cradle, and loop-and-hook fastener for better USB adapter placement on a computer monitor:

1. The wireless USB adapter comes with three black fasteners. Locate the one with a prickly side, and attach it to the plastic cradle on the middle of the outside rear.
2. Insert the wireless USB adapter in the plastic cradle, and connect the USB cable.



3. Place one of the other pieces of loop-and-hook fastener on the side or back of your monitor near the top for better reception. Then join the pieces of the fastener to attach the USB adapter in the plastic cradle to the monitor.

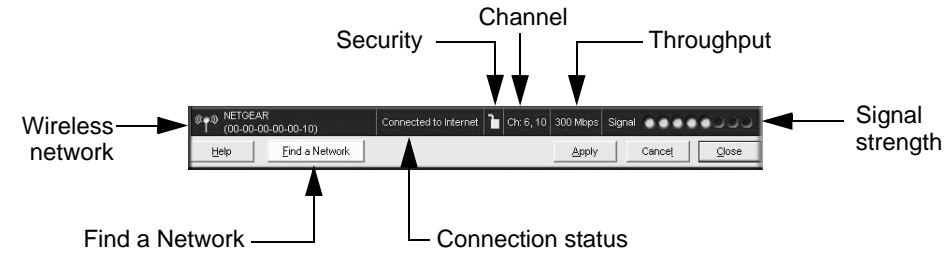


201-11193-01

December 2007

Using the Status Bar

The status bar is located at the bottom of the Settings tab.



Understanding the Status Bar	
Wireless network	Identifies which wireless network you have joined.
Security	<ul style="list-style-type: none"> • A closed lock indicates that security is enabled. • An open lock indicates an open network without wireless security.
Channel	The wireless channel used by the network. If many wireless networks in your area use the same channel, they can interfere with one another.
Throughput Mbps (megabits per second)	<ul style="list-style-type: none"> • To optimize wireless throughput, connect to a network with a high-speed router or access point and a high-speed Internet connection. • If there is wireless interference in the 2.4 GHz range, such as from a cordless phone, use the Advanced Settings to select 5 GHz. See the <i>NETGEAR RangeMax™ Dual Band Wireless-N USB Adapter WNDA3100 User Manual</i> on the Resource CD.
Signal strength	More dots indicates a stronger signal. Usually, you experience higher throughput when the signal is strongest.
Find a Network	Click Find a Network to start the Connection Wizard.
Connection status	The status of your network connection. <ul style="list-style-type: none"> • Connected to Internet. The wireless Internet connection is OK. • Connected to Router. The wireless connection to the router is OK, but the router is not connected to the Internet. • 169.254.x.x or _._._._. The wireless connection to the router is OK, but there is a problem with the router. See the <i>NETGEAR RangeMax™ Dual Band Wireless-N USB Adapter WNDA3100 User Manual</i> on the Resource CD.

Technical Support

After completing the Smart Wizard configuration assistant, locate the serial number on the bottom label of your product, and use it to register your product at <http://www.NETGEAR.com/register>.

Registration on the website or over the phone is required before you can use our telephone support service. The phone numbers for worldwide regional customer support centers are on the Warranty and Support Information card that came with your product. Go to <http://www.netgear.com/support> for product updates and Web support.



Attention: When you configure the wireless settings of this device, please make sure to select the correct country settings. Due to EU law, the country settings must be identical to the country where the device is operating.



This symbol was placed in accordance with the European Union Directive 2002/96 on the Waste Electrical and Electronic Equipment (the WEEE Directive). If disposed of within the European Union, this product should be treated and recycled in accordance with the laws of your jurisdiction implementing the WEEE Directive.

© 2007 by NETGEAR, Inc. All rights reserved. NETGEAR and the NETGEAR logo are registered trademarks of NETGEAR, Inc. in the United States and/or other countries. Other brand and product names are trademarks or registered trademarks of their respective holders. Information is subject to change without notice.