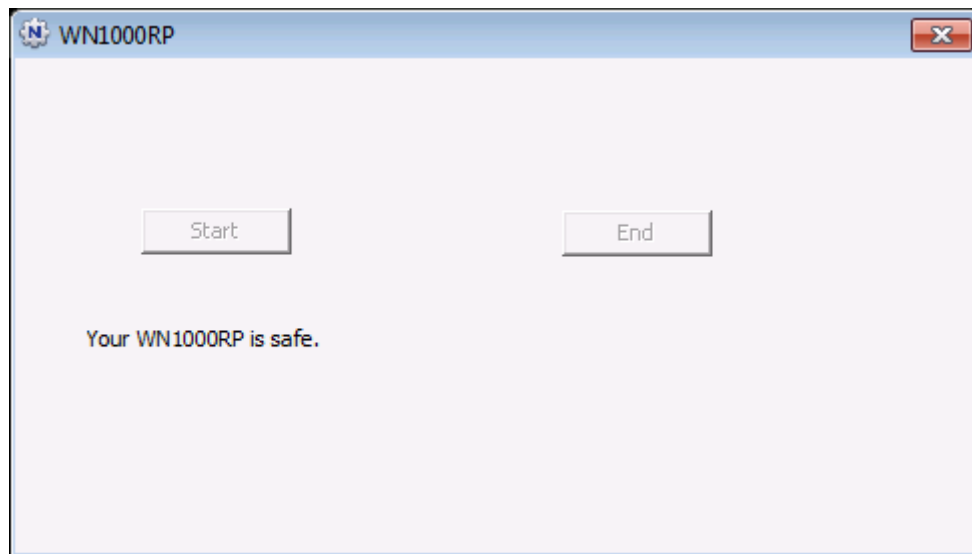
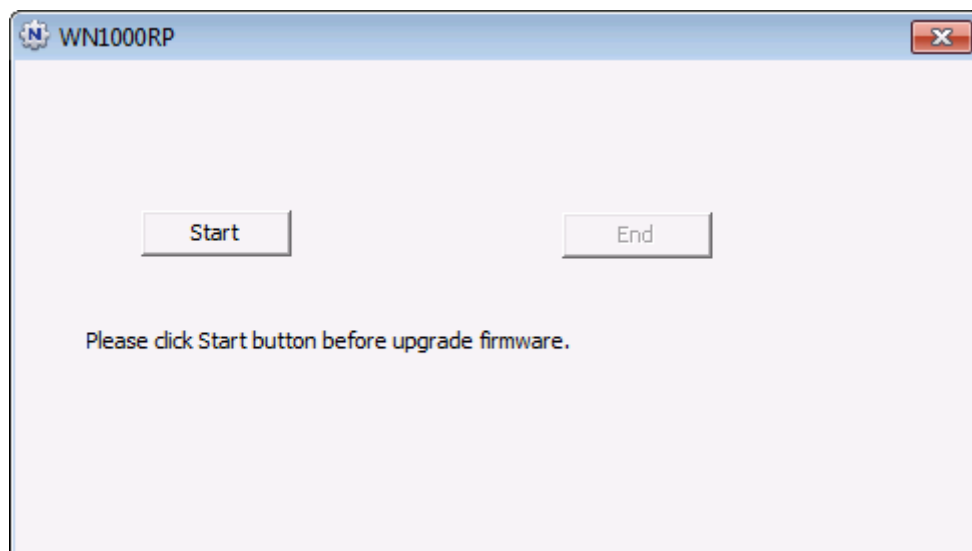


Use the following firmware upgrade instructions if your WN1000RP has firmware version that is lower than v1.0.0.32.

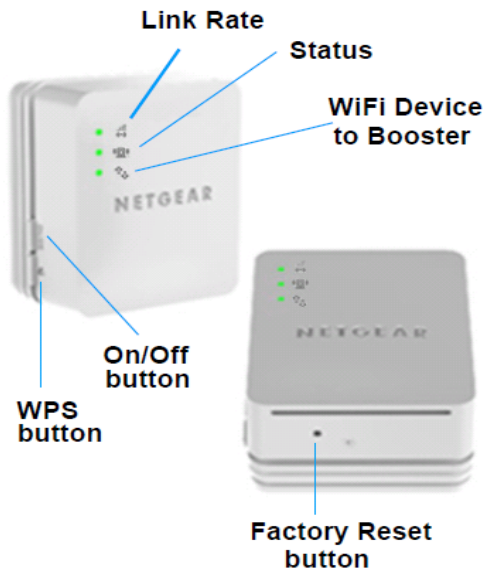
1. The downloaded archive file including latest WN1000RP (**wn1000rp-V1.0.0.32.img**) and upgrade utility (**WN1000RP_upgrade_utility.exe**).
2. Connect your PC to the WN1000RP WLAN and run the upgrade utility by double clicking *WN1000RP_upgrade_utility.exe*.
(A) If the below screen appears, you can reboot WN1000RP and proceed to step 7.



- (B) If you see the screen below, proceed to step 3.



3. Reset WN1000RP to factory default settings.



- (A) Power up WN1000RP.
- (B) Use paperclip to push **Factory Reset Button** and release when you see **Status LED** is blinking red.
- (C) WN1000RP will reset itself to factory default settings and reboot.

4. After device reboots, use your PC connect to WN1000RP's default network name (SSID) **"NETGEAR_EXT"**.

For detailed steps on how to connect, please refer to section **Option 2: Connecting with web browser setup guide** in WN1000RP's Installation Guide.

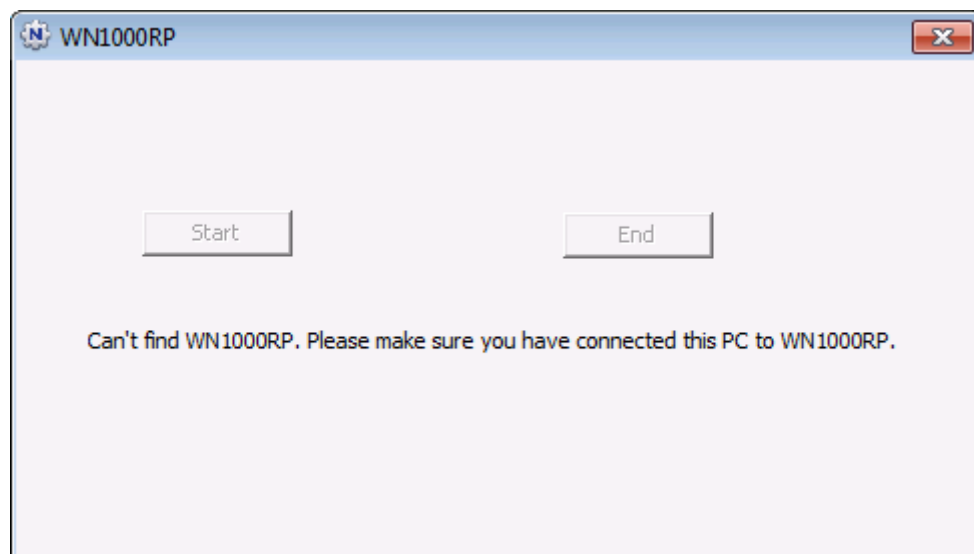
Installation guide can be downloaded here:

<http://support.netgear.com/product/WN1000RP>

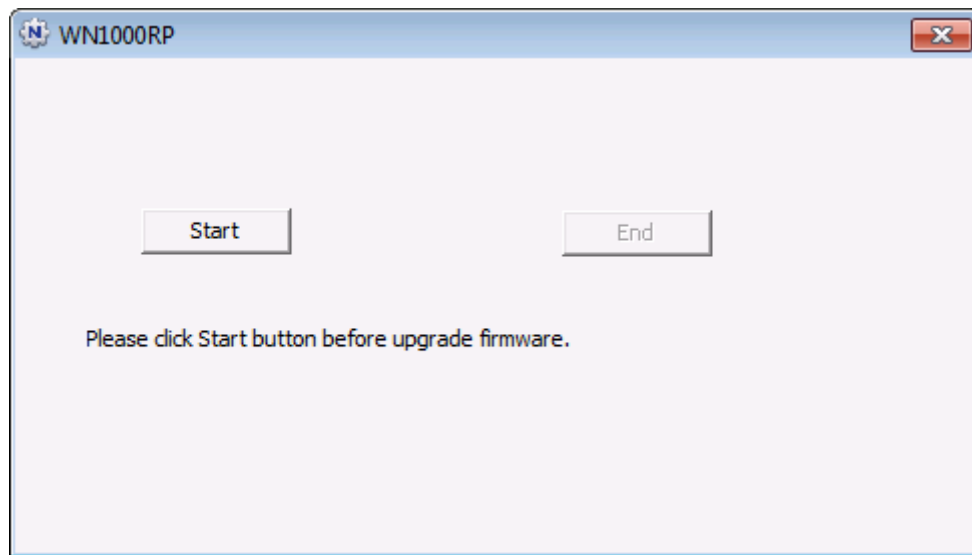
5. Open **WN1000RP_upgrade_utility.exe** again.

The utility will automatically detect and check connection to WN1000RP.

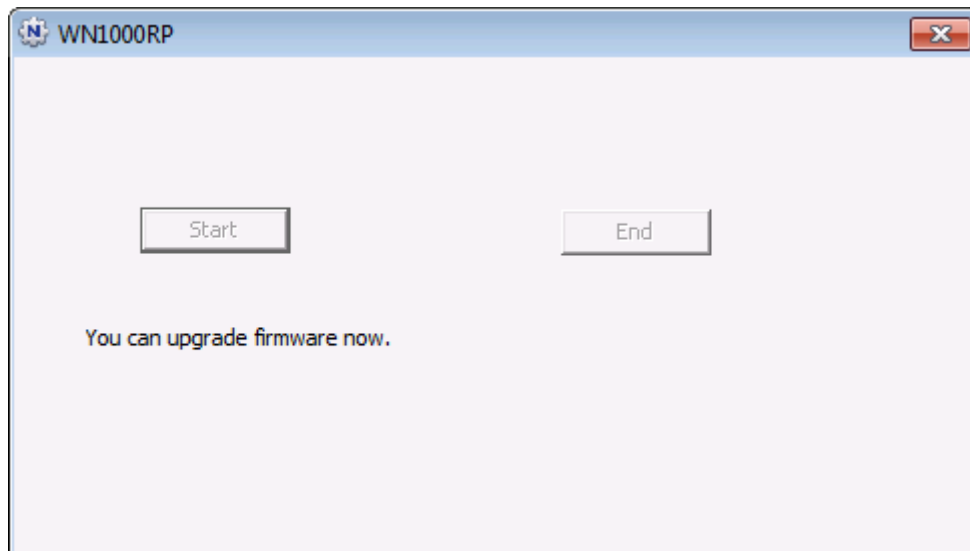
- A) If you see the below message, your PC might not be connected to WN1000RP. Please close the utility and repeat step 2 again



- B) If following screenshot shown, proceed to step 6.



- Using the utility, click the **Start** button and wait for the message **You can upgrade firmware now** as shown below.



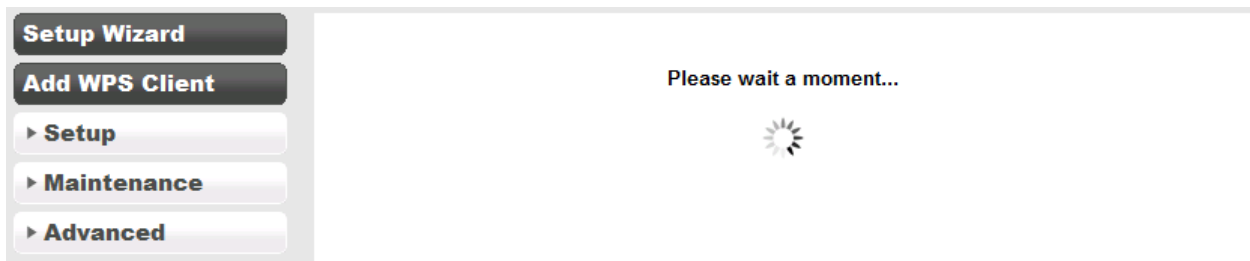
Please DO NOT close this window during firmware upgrade.

- Open your browser and connect to <http://www.mywifiext.net/>.

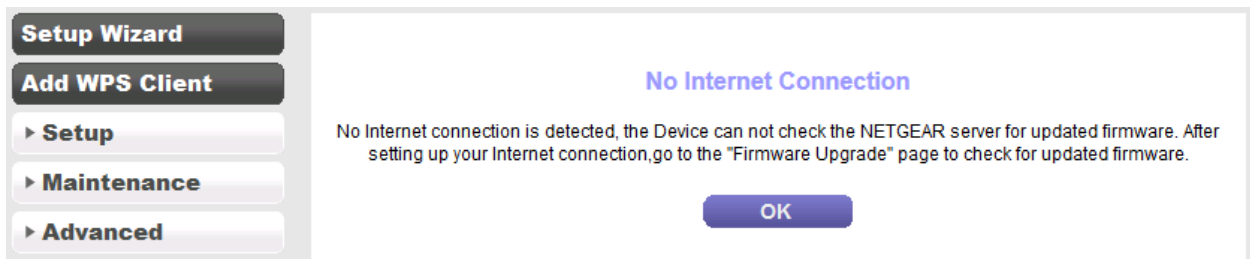
You will be prompted for a log in username/password. Use the default **admin** as username and **password** as password. You should be redirected to WN1000RP settings page. If not, please contact **Netgear Tech Support** at (1-888-NETGEAR).

IMPORTANT: Once you are logged in the WN1000RP GUI, , PLEASE wait until the detection is done and displays **"No Internet Connection"** page as shown below.

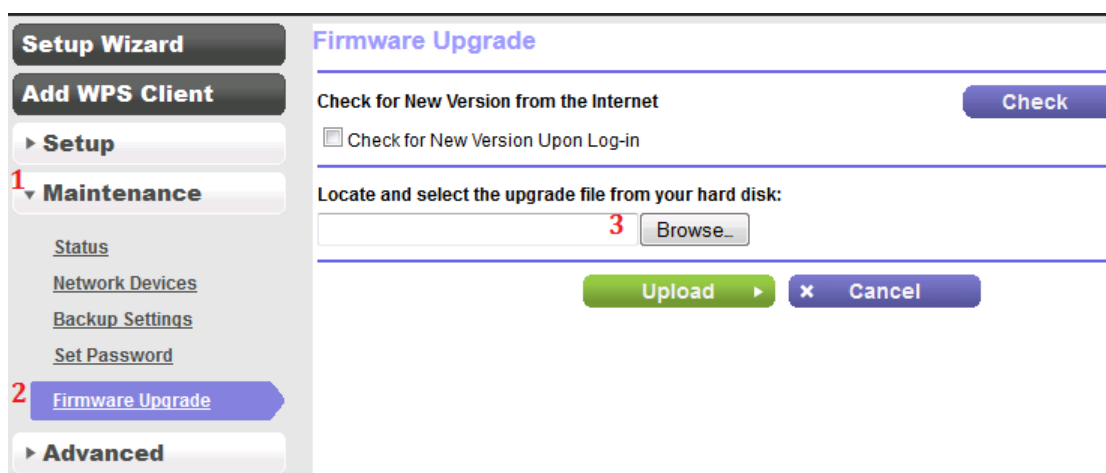
You will see the screen below during the automatic firmware check progress.



Firmware check incomplete due to the WN1000RP not being connected to the Internet.

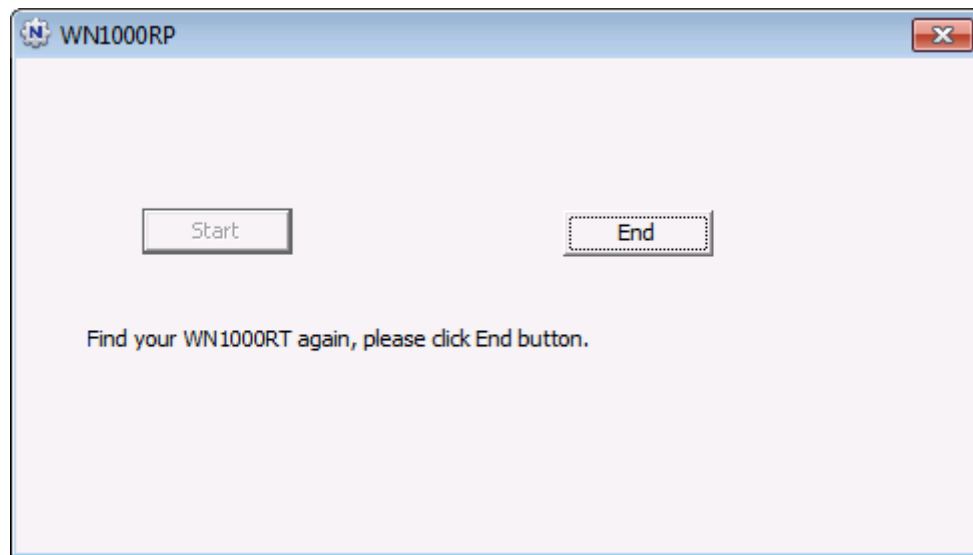


8. Go to **Maintenance** → **Firmware Upgrade**. Click **Browse** button and locate the firmware that you'd downloaded previously in step 1. Then, click **Upload** button.

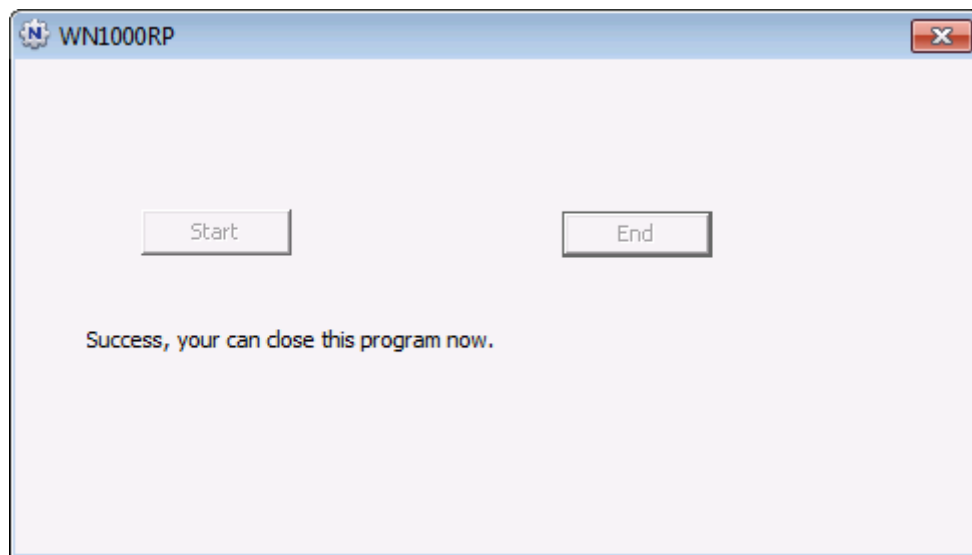


WN1000RP will go through the firmware update and automatically reboot. **Please note that your wireless connection will be dropped while the WN1000RP is restarting.**

9. Wait until WN1000RP restarts and **Status** LED becomes green. Make sure that the wireless connection to WN1000RP is established before doing the following procedures. Follow the Installation guide to install your WN1000RP again if necessary. Go to the utility again to check if the connection is established as shown in following screenshot.

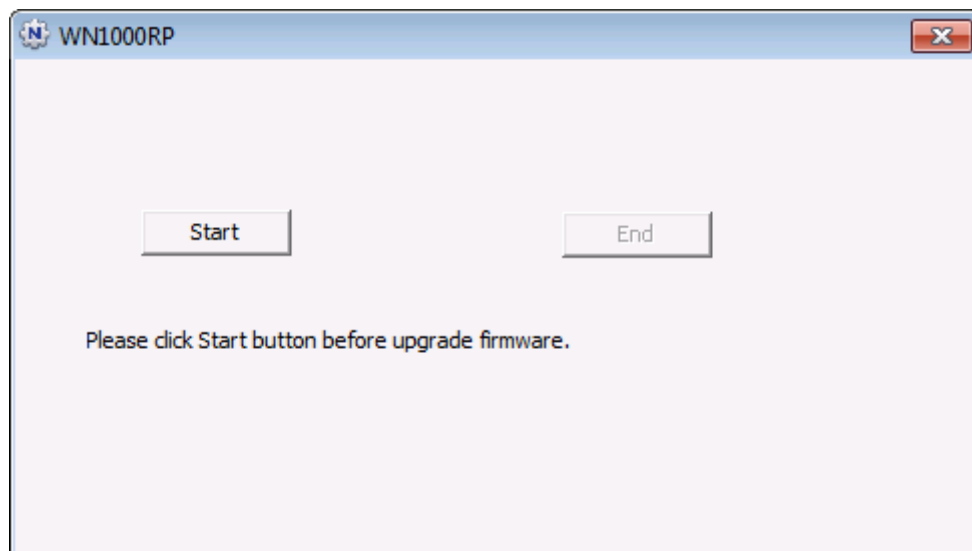


Click **End** button, and close the program.



The upgrade procedure is done, please follow next step to ensure upgrade is successful.

10. Run the utility again to ensure the software upgrade is successful. If you see the below screenshot, the upgrade failed. Please repeat the steps above starting with step 2.



If following screenshot is shown, your previously steps to upgrade firmware is successfully. You could close the program now.

