

NETGEAR Wireless-G USB 2.0 Adapter WG111v3

These setup instructions assume that you will connect to an access point or wireless router.

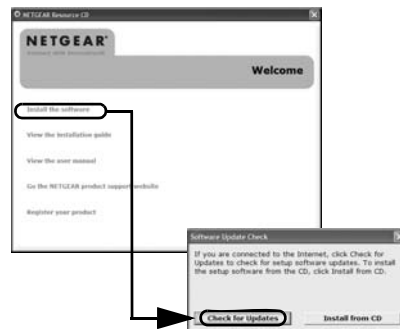
Estimated completion time: 10 minutes.

Installation

1. First, install the WG111v3 software.

Insert the *Resource CD*. If the CD main page does not appear, double click **Autorun.exe** on the CD.

- Click **Install the Software**. The Check for Updates window opens.
- If you are connected to the Internet, click **Check for Updates**. If not, you can choose to install from the CD.
- Follow the onscreen instructions for the InstallShield wizard and the NETGEAR Smart Wizard.
- When the Installation Complete message appears, click **Next**.



2. Now, insert the wireless USB adapter.

- When prompted, insert your wireless USB adapter.
- Click **Next**, and confirm the country where you are located.

The wireless USB adapter is automatically added with the installed driver.



3. Use the Smart Wizard to set up your wireless USB adapter.

- Windows 98SE, Me, or 2000 users go to Step b. Windows XP or Vista users can set up the wireless adapter either with the NETGEAR Smart Wizard (recommended) or the Windows Configuration Utilities.

- NETGEAR Smart Wizard:** Reveals more information about each network and makes it easier to troubleshoot network connection problems.
- Windows configuration utilities:** See the Windows documentation or “Using Windows XP and Vista Wireless Configuration Utilities” at: <http://documentation.netgear.com/reference/enu/winzerocfg/index.htm>

- Click **Next** to accept the Smart Wizard. You will be prompted to let the wizard help you connect to a network (recommended).
- Click **Next** to accept.



4. Connect to a wireless network.

The next screen that displays depends on whether there is a wireless router or access point at your location that supports Wi-Fi Protected Setup (WPS):




The wireless networks in your area do not support WPS.



One or more wireless networks with WPS are in your area.

- Follow the instructions on the Connecting to your wireless network screen:
 - If there are no WPS networks, select a wireless network from the drop-down list, and the wizard records your choice.

Note: Hidden networks do not broadcast the Network Name (SSID). These networks are in the drop-down list, but the Network Name (SSID) is blank. If the network uses security, then the Smart Wizard detects it.
 - If you are using WPS, click **Next** to continue.
- WPS allows you to click a button or create a PIN number to securely connect to a wireless router or access point. Both the wireless adapter and the router or access point must support WPS. For more information about WPS, see the *NETGEAR Wireless-G USB 2.0 Adapter WG111v3 User Manual* on the *Resource CD*.
- Follow the Smart Wizard steps to connect to a network and to save a Profile.
- After you have reviewed the settings, click **Finish**.

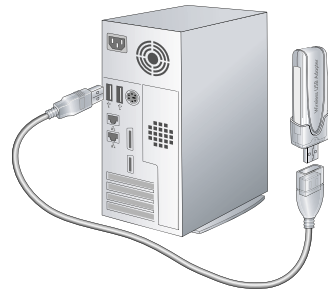
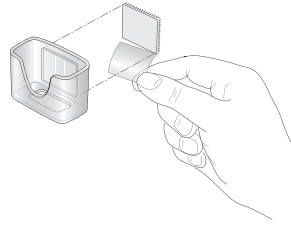
The  icon appears in the system tray and on the desktop; and the Settings page opens. The wizard initiates your wireless connection. It could take up to a minute for your wireless connection to be established. Check the status bar as described in *Using the Status Bar* on the other side of this document.

Placing the USB Adapter Cradle

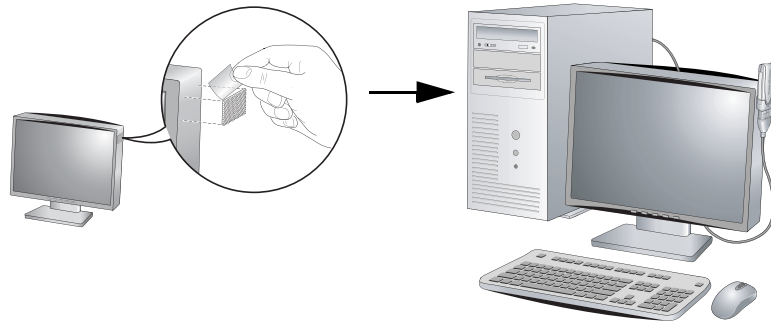
You can attach the wireless USB adapter directly to a USB port on your computer, or use the USB cable to extend the range and obtain better wireless reception.

To use the USB cable, plastic cradle, and loop-and-hook fastener for better USB adapter placement on a computer monitor:

1. The wireless USB adapter comes with three black fasteners. Locate the one with a prickly side, and attach it to the plastic cradle on the middle of the outside rear.
2. Insert the wireless USB adapter in the plastic cradle, and connect the USB cable.

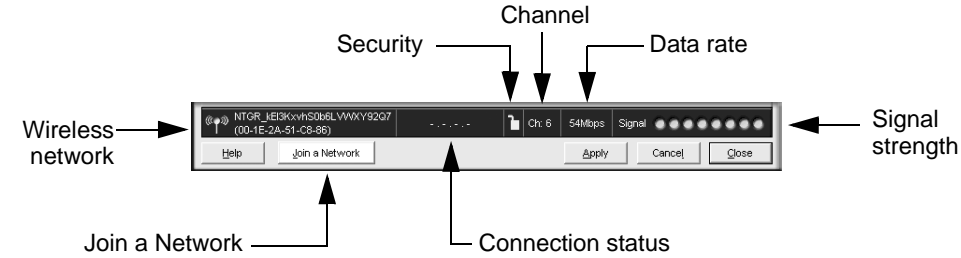


3. Place one of the other pieces of loop-and-hook fastener on the side or back of your monitor near the top for better reception. Then join the pieces of the fastener to attach the USB adapter in the plastic cradle to the monitor.



Using the Status Bar

The status bar is located at the bottom of the Settings screen.



Understanding the Status Bar	
Wireless network	Identifies which wireless network you have joined.
Security	<ul style="list-style-type: none"> • Locked: security enabled. • Unlocked: security not enabled.
Channel	The wireless channel used by the network. If many wireless networks in your area use the same channel they can interfere with one another.
Data rate	Wireless data rate measured in Megabits per second.
Signal strength	More dots indicates a stronger signal.
Join a Network	Click Join a Network to open the Connection Wizard.
Connection status	Identifies the status of your network connection. <ul style="list-style-type: none"> • Connected to Internet: Wireless Internet connection is OK. • Connected to Router: Wireless connection to the router is OK but the router is not connected to the Internet. • 169.254.x.x or _____.____.____.____: The wireless connection to the router is OK but there is a problem with the router. See the online help or the <i>NETGEAR Wireless-G USB 2.0 Adapter WG111v3 User Manual</i> on the <i>Resource CD</i>.

Technical Support

After completing the Smart Wizard configuration assistant, locate the serial number on the bottom label of your product and use it to register your product at <http://www.NETGEAR.com/register>.

Registration on the website or over the phone is required before you can use our telephone support service. The phone numbers for worldwide regional customer support centers are on the Warranty and Support Information card that came with your product.

Go to <http://www.netgear.com/support> for product updates and Web support.



This symbol was placed in accordance with the European Union Directive 2002/96 on the Waste Electrical and Electronic Equipment (the WEEE Directive). If disposed of within the European Union, this product should be treated and recycled in accordance with the laws of your jurisdiction implementing the WEEE Directive.



201-11025-02

March 2008

© 2008 by NETGEAR, Inc. All rights reserved. NETGEAR and the NETGEAR logo are registered trademarks of NETGEAR, Inc. in the United States and/or other countries. Other brand and product names are trademarks or registered trademarks of their respective holders. Information is subject to change without notice.