



# SPH200D Dual-mode Cordless Phone with Skype®

## Combine your cordless phone and Skype calls, all in one.

- Connect the base station to your phone line and router
- Use the cordless phone to make phone calls or Skype calls
- Crystal clear voice quality and longer range with DECT cordless technology
- Talk for free to Skype users anywhere, without a PC
- Call any phone worldwide for pennies a minute using SkypeOut\*

**How it works** Simply plug the Dual-mode Cordless Phone Station into your Internet router (Ethernet port) to enjoy making Skype calls. In addition, you can plug the base station into your phone line (PSTN) wall jack to make land line calls—from the same cordless phone. Up to 3 additional phones can be added—so you can replace your current cordless phones throughout your home with NETGEAR's Dual-mode Cordless Phone with Skype.

- Call your friends through the Internet, for FREE
- Make and receive traditional phone calls as well—this phone plugs into your “land line” phone jack
- Call ordinary phones worldwide for pennies per minute, NO MONTHLY FEES
- Manage your contact list and see who's available to talk to
- Use premium services like SkypeIn, SkypeOut, Skype Voicemail (additional fees apply)
- Supports up to 4 handsets per household (additional handsets sold separately)
- DECT Cordless—ideal for long range and clear voice quality
- Multiple Languages Supported

\* For calls made through Skype and or the SkypeOut service. Terms and conditions of the Skype services are subject to change at any time in the sole discretion of Skype Limited.



No emergency calling—emergency calls will need to be made by alternative methods. This phone will not function during a power failure or broadband outage. Use of Skype software, SkypeOut and/or SkypeIn is subject to Skype's terms of service and end user license agreement.

### Three Ways You Can Connect with the Dual-mode Cordless Phone with Skype



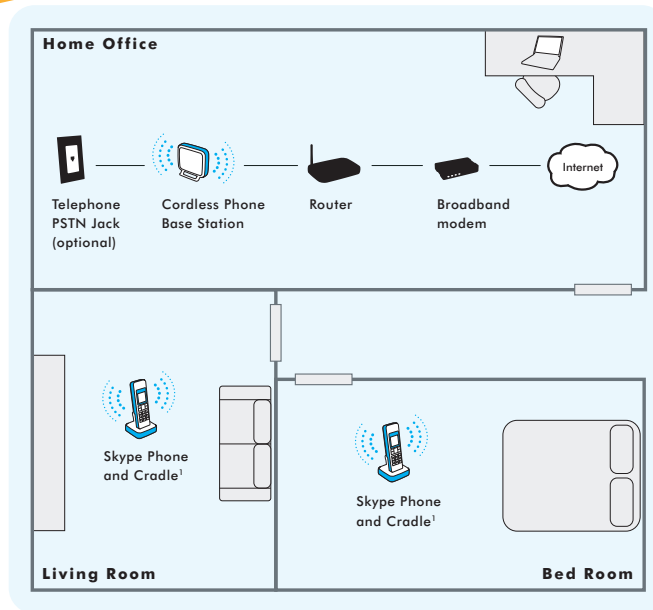
**Skype-to-Skype**  
These over-the-Internet calls are always free, anywhere in the world



**SkypeIn/SkypeOut**  
Used to make or receive regular phone calls over the Internet at pennies-per-minute



**Traditional Phone**  
Use the SPH200D as a regular phone through the use of a “Land Line”



<sup>1</sup>The SPH200D set includes one (1) Cordless Phone, Cradle and Base Station. Additional phones sold separately.

### System Requirements

- Requires high speed Internet connection (e.g. cable or DSL)

### Physical Specifications (Phone)

- Dimensions (HxWxD): 141.5 x 46 x 26 mm
- Weight: 130g with battery

### Physical Specifications (Base Station)

- Dimensions (HxWxD): 137 x 126.5 x 70 mm
- Weight: 235g

- **Frequency**
  - DECT (1.9 GHz)
- **Standards Compatibility**
  - DECT/UPCS, IEEE 802.3 Ethernet Standard
- **Battery Life**
  - Talk time (typical): 12 hours
  - Standby time (typical): 120 hours
- **Input**
  - Ethernet (RJ-45) and PSTN (RJ11) connector on Base Station unit
- **Network Connections/Speed**
  - 10/100 Mbps

### Package Contents

- One (1) Dual-mode Cordless Phone with Skype®
- Rechargeable Battery
- Cordless Base Station
- Power Adapter—Charging Cradle (localized to country of sale)
- Power Adapter—Cordless Base Station(localized to country of sale)
- Setup Guide
- Warranty/Support Information Card

### NETGEAR Related Products

- Skype WiFi Phone (SPH101)
- RangeMax™ Wireless Router (WPN824)
- RangeMax™ NEXT Wireless-N Router (WNR834B)
- RangeMax™ NEXT Wireless-N Modem Router (DG834N)

- **Warranty**
  - NETGEAR 1-Year Warranty

### Frequently Asked Questions on NETGEAR's Dual-mode Cordless Phone with Skype

- Q:** What is NETGEAR's Dual-mode Cordless Phone with Skype?
- A:** A cordless phone that enables you to make free Internet calls to anyone in the world who also has Skype; or inexpensive calls to any normal phone.
- Q:** Can I use this phone to make and receive calls through my home phone line?
- A:** Yes, you can use it to replace your home phone and make/receive calls through the use of a "land line."
- Q:** Isn't Skype designed to just work on PCs and laptops?
- A:** Not anymore. Now you can walk around untethered within your home and talk to other Skype users anywhere in the world.
- Q:** On a PC, Skype shows when my contacts are online. How does that work with this cordless phone?
- A:** An intuitive on-screen menu lets you see who is online and available to talk, similar to what you see on a PC.
- Q:** Can I use it to talk with non-Skype users?
- A:** For pennies a minute, and no monthly fee, you can use SkypeOut minutes to call any phone.
- Q:** How do I download Skype to the Dual-mode Cordless Phone??
- A:** It is pre-loaded with Skype and ready to use—just plug it in to a live Internet connection.
- Q:** What does the term "DECT" mean?
- A:** DECT is a cordless phone standard and stands for Digital Enhanced Cordless Telecommunications. DECT cordless phones provide long range, clear voice quality, and advanced digital features.
- \* Battery talk and standby times are estimates only and depend on network configuration, signal strength, features used, battery age and condition, charging practices, temperatures to which battery is exposed, and many other factors. Please note that the amount of time a phone is used for calls will affect its standby time. Likewise, the amount of time that the phone is turned on and in standby mode will affect its talk time. For further information please refer to the phone's user guide.



# NETGEAR®

4500 Great America Parkway  
Santa Clara, CA 95054 USA  
Phone: 1-888-NETGEAR  
E-mail: info@NETGEAR.com  
www.NETGEAR.com

©2006 NETGEAR, Inc. NETGEAR, the NETGEAR logo, Connect with Innovation, Everybody's connecting, the Gear Guy logo, IntelliFi, ProSafe, RangeMax and Smart Wizard are trademarks or registered trademarks of NETGEAR, Inc. in the United States and/or other countries. Microsoft and Windows are trademarks or registered trademarks of Microsoft Corporation in the United States and/or other countries. Other brand and product names are trademarks or registered trademarks of their respective holders. Information is subject to change without notice. All rights reserved.

This product has been tested for quality assurance and this product or its components may have been recycled.

The Skype service is offered and operated by Skype, and NETGEAR does not guarantee Skype service availability, quality, or pricing. This device is packaged with a limited warranty, the acceptance of which is a condition of sale.

\* Free basic installation support provided for 90 days from date of purchase. Advanced product features and configurations are not included in free basic installation support; optional premium support available.

SPH200D-2

