

NETGEAR<sup>®</sup>

NeoTV<sup>™</sup> MAX  
STREAMING PLAYER



Getting Started

## **Support**

Thank you for selecting NETGEAR products.

After installing your device, locate the serial number on the label of your product and use it to register your product at <https://my.netgear.com>.

You must register your product before you can use NETGEAR telephone support. NETGEAR recommends registering your product through the NETGEAR website.

For product updates and web support, visit <http://support.netgear.com>. NETGEAR recommends that you use only the official NETGEAR support resources.

You can get the user manual online at <http://downloadcenter.netgear.com> or through a link in the product's user interface.

# What's in the Box



**NeoTV Streaming Player**



**Remote control**

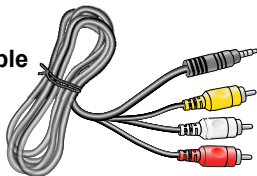


**Installation guide**

**Power adapter**



**AV cable**



## Front and Rear Views

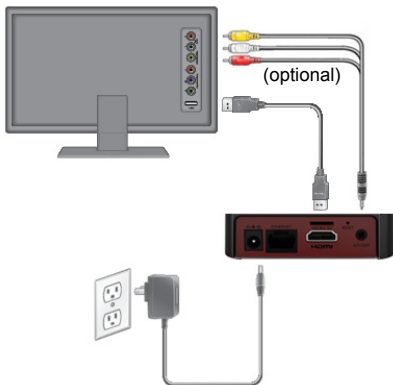


## What You Need to Get Started

- TV with HDMI or AV port
- HDMI cable
- Broadband Internet connection
- A wireless or wired network
- Device with Internet browser for service activation

## Connect to the TV

1. Make sure that your TV is on and set to display the correct video input.
2. Connect an HDMI cable (sold separately) to the HDMI port on your player and to the **HDMI IN** port on your TV. Alternatively, if your TV does not have an HDMI port, you can connect using the AV composite cable. When the HDMI cable is connected, there is no output to the AV composite port.



**TIP:** HDMI supports 5.1 surround sound (if available). You do not need a separate audio cable.

3. Connect the power adapter to your player, and plug it into an electrical outlet.

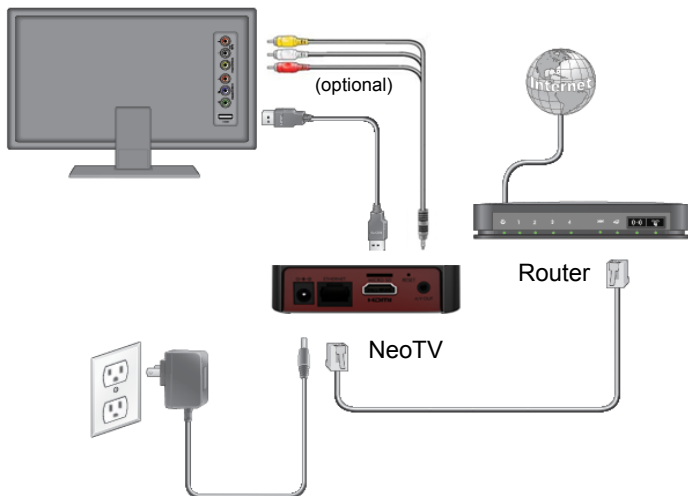
## Connect to Your Network

To start streaming, you must connect the NeoTV to your wireless or wired home network. After you get your network ready, the onscreen guided setup helps you connect your player to your network.

**TIP:** Do not place anything on top of your NeoTV player. Placing objects on top of your player can interfere with the wireless signal or cause the player to overheat.

## Wired Connection

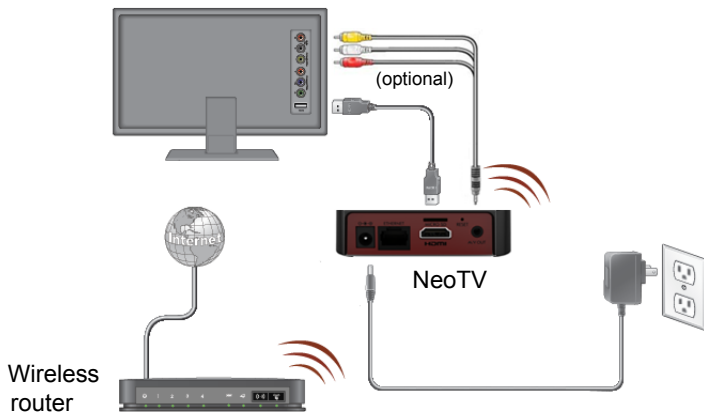
Use an Ethernet cable (sold separately) to connect your player to a LAN port on your router.



## Wireless Connection

1. If you are using a wireless connection, place your NeoTV within range of your wireless network.

To connect wirelessly, you can use Wi-Fi Protected Setup (WPS), or you can select your network and enter its security password using the onscreen setup guide.



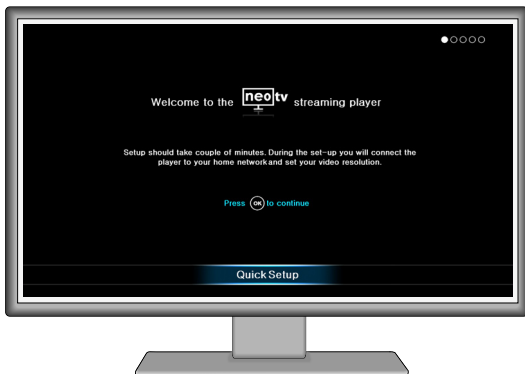
2. If you do not receive a strong signal during the onscreen setup, rotate your player or move it closer to your router.



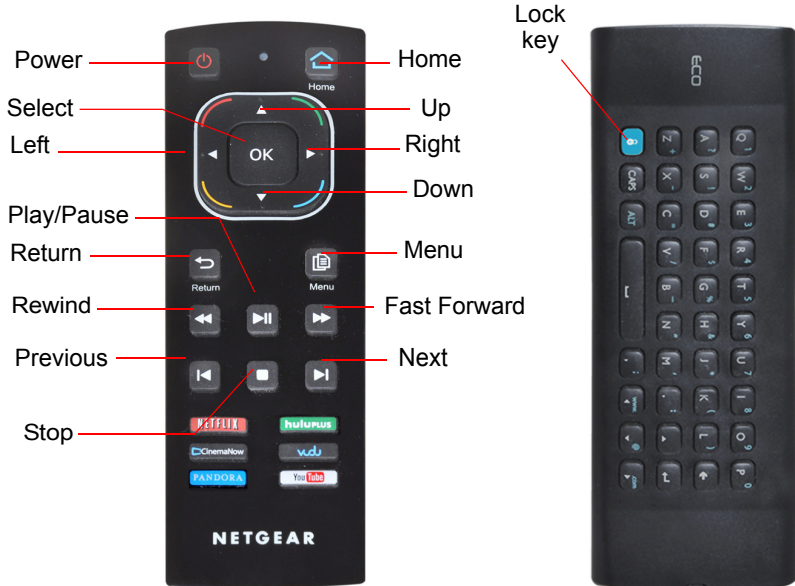
# Onscreen Guided Setup

On your TV:

- Use the remote control to follow the NeoTV onscreen setup instructions, which include setting the output resolution to the TV, and the standby timing, connecting to a network, and checking for the latest NeoTV software update.
- Your player might download software updates or restart during setup.
- Once you complete setup, select a channel icon (such as Netflix or Pandora) to enjoy the content.



# Remote Control



**TIP:** Before using the remote control, remove the yellow battery isolation strip at the bottom of the remote.

## Remote Control Lock Key Feature

This remote control feature prevents the accidental pressing of the keyboard buttons when you are using the opposite side of the remote control. By pressing the **Lock** button on the navigation side of the remote, the keyboard is automatically locked. To unlock and start using the keyboard, press the **Lock** button again. When the keyboard is locked and you press a key on the keyboard, the **Lock** button illuminates.

## Remote Control App

NeoTV Remote app turns your iPhone or Android phone into a NeoTV Streaming Player remote control.



## *To Install the Remote Control App*

1. Using your iPhone or Android smartphone, navigate to the Apple AppStore or Google Play, and search for NeoTV Remote. You can use the following QR codes to speed up this process:



**Apple App Store**



**Google Play**

2. Install the app on your phone.
3. Make sure that the phone is connected to the same WiFi network (SSID) as your NeoTV Streaming Player.
4. Launch the app, and it searches for your device and connects.

# Intel WiDi Channel


The Intel Wireless Display (WiDi) channel lets you display your laptop screen on your TV.

**Note:** To use the Intel WiDi channel, your laptop must:

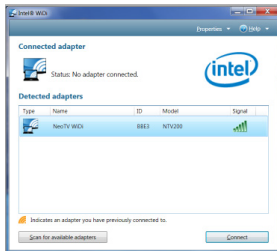
- Be Intel WiDi-capable
  - Have the Intel WiDi software installed
1. From the NeoTV main screen, use the remote to select the Intel WiDi channel:



The Ready for Connection screen displays.

2. On your laptop, launch the Intel WiDi software.
  - Select the Intel WiDi icon  on your computer desktop.
  - From Windows, select **Start**. Type **Intel WiDi** in the search field.
  - Select and run the Intel WiDi software.

3. Use the Intel WiDi software to scan and find the NeoTV WiDi adapter.

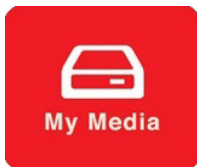


4. Double-click the detected NeoTV to connect to it. If you are connecting the laptop to the NeoTV for the first time, the NeoTV adapter displays a 4-digit security code on your TV.
5. Enter this security code into the Intel WiDi application on your laptop. Within a few seconds, the TV screen displays your laptop screen.
6. To exit the NeoTV WiDi connection or return to the NeoTV home page, you must disconnect the WiDi connection.
  - a. Click the **Disconnect** button on your laptop WiDi application, and wait for the Ready for Connection screen to appear on your TV.
  - b. Press the NeoTV remote **Home** button to return to the NeoTV home page.

## My Media

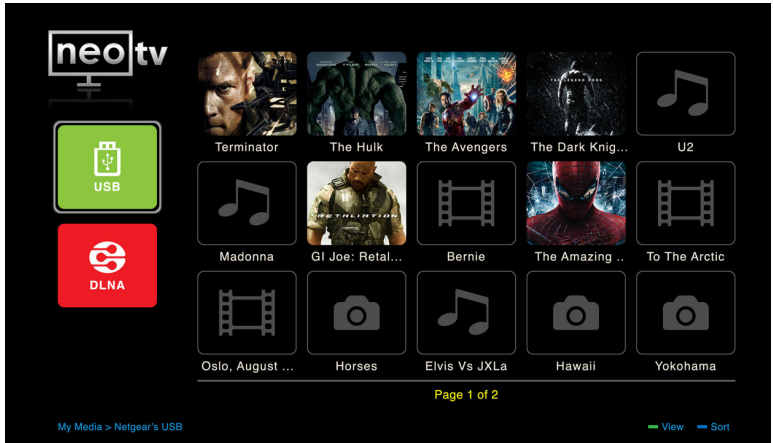
My Media channel lets you play back your local storage content from a USB disk drive, MicroSD card, and local network DLNA server.

1. Select the My Media icon from the NeoTV main screen.



2. Use the remote to select the storage device you want to browse. Valid devices display on the left.

3. Select a video, audio, or photo file and press **OK** on the remote to start playing.



4. Press the green button on the remote to change the thumbnail view. Press the green button again to remove the list mode view.







## **Trademarks**

NETGEAR, the NETGEAR logo, and Connect with Innovation are trademarks and/or registered trademarks of NETGEAR, Inc. and/or its subsidiaries in the United States and/or other countries. Information is subject to change without notice. © NETGEAR, Inc. All rights reserved.

## **Compliance**

For the current EU Declarations of Conformity, visit:

[http://support.netgear.com/app/answers/detail/a\\_id/11621/](http://support.netgear.com/app/answers/detail/a_id/11621/).

Intended for indoor use only in all EU member states, EFTA states, and Switzerland.

**NETGEAR, Inc.**

350 E. Plumeria Drive

San Jose, CA 95134-1911 USA



201-15503-05

January 2013