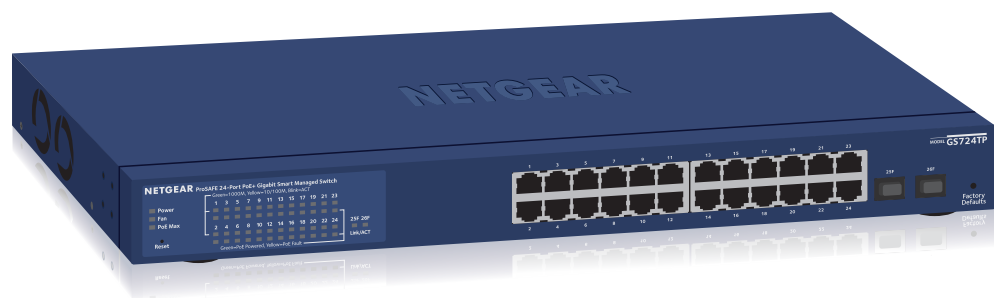


Installation

ProSAFE 24-Port Gigabit Smart Managed Switch With PoE+ and 2 SFP Ports

GS724TPv2



Package Contents

- NETGEAR ProSAFE® 24-Port Gigabit Smart Managed Switch GS724TPv2
- AC power cord (localized to country of sale)
- Rubber footpads for tabletop installation
- 19-inch rack-mount kit for rack installation
- Resource CD
- Installation guide

NETGEAR®

Configure the Switch With a Static IP Address

Note: If your network uses a DHCP server, this section does not apply. Go directly to [Connect the Switch to a Network](#).

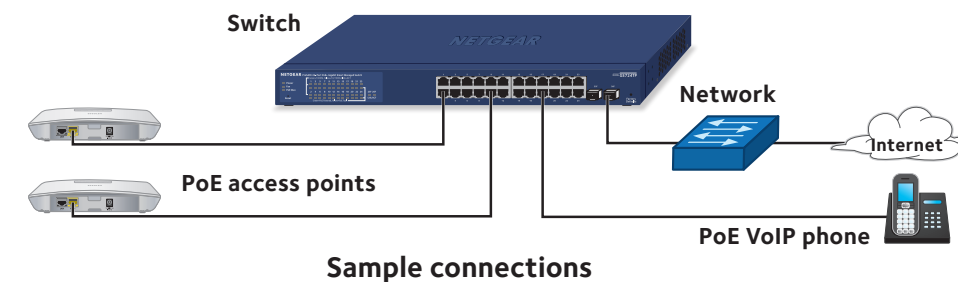
If you are using static IP addresses in your network, configure the switch IP address before you connect the switch to a network.

1. Configure a computer with a static IP address in the 192.168.0.x subnet.
2. Plug the switch into a power outlet and connect your computer to the switch using an Ethernet cable.
3. Open a web browser and enter **192.168.0.239** in the address bar. The default IP address of the switch is 192.168.0.239. A login page displays.
4. Enter **password** for the password. The System Information page displays.
5. Select **System > Management > IP Configuration**. The IP Configuration page displays.
6. Select the **Static IP Address** radio button.
7. Enter the static IP address, subnet mask, and default gateway IP address that you want to assign to the switch.
8. Click the **Apply** button. Your settings are saved.

Connect the Switch to a Network

1. Connect PoE (or non-PoE) devices to the RJ-45 PoE network ports on the switch front panel. Use Category 5e (Cat 5e) Ethernet cables terminated with RJ-45 connectors to make Gigabit connections.
2. Connect an RJ-45 port or SFP port on the switch to a network that includes a DHCP server.
Note: In a small office or home office network, connect the switch to the LAN port of a router that, in turn, is connected to an Internet modem. If you use an SFP port, you must insert an SFP transceiver module, which is available from NETGEAR.

3. Power on the switch and wait two minutes.



Check the PoE Status

The switch can supply up to 30W PoE+ (IEEE 802.3at) to each port, with a maximum PoE power budget of 190W across all active PoE+ ports.

The PoE Max LED indicates the status of the PoE budget on the switch:

- **Off.** Sufficient (more than 7W of) PoE power is available.
- **Solid amber.** Less than 7W of PoE power is available.
- **Blinking amber.** At least once during the previous two minutes, less than 7W of PoE power was available.

Configure the Switch

You can configure the switch either by using a computer's web browser or by installing the Smart Control Center Utility (see [Smart Control Center Utility](#)) on your Windows-based computer.

Web Browser Access

1. For initial configuration, open a web browser on a computer that is on the same network and subnet as the switch and enter the switch's IP address. If you are unsure how to determine the IP address of the switch, you can use the Smart Control Center Utility. A login page displays.
2. Enter **password** for the password.

The System Information page displays.

3. Configure the switch for your network.
For information about switch configuration, see the user manual for your switch, which you can download from downloadcenter.netgear.com.

Smart Control Center Utility

The Smart Control Center Utility runs on Windows-based computers. The utility is on the resource CD that came with the switch. You can also visit netgear.com/support/product/SCC to download the utility.

Install the Smart Control Center Utility From the CD

Note: The Smart Control Center Utility requires Adobe Air. If Adobe Air is not detected during Smart Control Center Utility installation, you are prompted to allow Adobe Air to be installed.

1. Insert the resource CD into a computer that is on the same network and the same subnet as the switch.
2. Click the **Smart Control Center Utility** link and follow the prompts to install the program.

The utility is installed in the program directory of your computer and a **Smart Control Center** icon is placed on your desktop.

Note: If the Resource CD Center does not automatically launch, open Windows Explorer, locate the CD content, right-click the **Autostart** file, and then select **Run as Administrator**.

3. If prompted, allow Adobe Air to be installed.

Note: For optimal discovery performance, we recommend that you restart your computer after installing the Smart Control Center Utility.

Configure the Switch With the Smart Control Center Utility

1. Connect the computer to the network.
The computer that is running the Smart Control Center Utility must be on the same network (with same broadcast domain) as the switch.
2. Double-click the **Smart Control Center** icon.
The Smart Control Center displays.
3. Click the **Discover** button.
The Smart Control Center Utility finds Smart Managed Switches on the network and displays each switch's MAC address, IP address, and model number.
If the utility does not discover your switch, verify that the cable connections are secure and that the computer's IP address is in the same subnet as the switch, and click the **Discover** button.
You might need to temporarily turn off the antivirus program, firewall, or both on the computer so that the utility can discover the switch.
4. Select the switch that you want to configure.
5. Click the **Web Browser Access** button.
6. When prompted, enter the password.
The default password is **password**.
7. Click the **Login** button.
The System Information page displays.
8. Configure the switch for your network.
For information about switch configuration, see the user manual for your switch, which you can download from downloadcenter.netgear.com.
9. When you are finished with the configuration, return the computer's antivirus program and firewall to their usual settings.

Troubleshooting Tips

Here are some tips for correcting simple problems that might occur:

- Be sure to power on your computer and switch in the following sequence:
 1. Turn on the switch and wait two minutes.
 2. Turn on the computer and connect it to the switch.
- Make sure that the network settings for the computer or device are correct. You might need to temporarily turn off the antivirus program, firewall, or both on the computer so that the utility can discover the switch.
- To use the Smart Control Center Utility, you must configure your computer's security software to allow broadcast UDP packets to go through to the destination IP address of 255.255.255.255. The Smart Control Center Utility uses UDP source and destination ports 63323 and 63324.
- Make sure that the Ethernet cables are plugged in correctly. For each PoE device connected to the switch, the corresponding lower port LED on the switch lights solid green. (The LEDs are located to the left of the ports.) If the corresponding lower port LED lights solid amber, a PoE fault occurred.
- Make sure that the PoE Max LED is off. If the PoE Max LED is solid amber, disconnect one or more PoE devices to prevent PoE oversubscription.

Support

Thank you for selecting NETGEAR products. You can visit www.netgear.com/support to register your product, get help, access the latest downloads and user manuals, and join our community. We recommend that you use only official NETGEAR support resources.

For the current EU Declaration of Conformity, visit http://support.netgear.com/app/answers/detail/a_id/11621/.

For regulatory compliance information, visit <http://www.netgear.com/about/regulatory/>.

See the regulatory compliance document before connecting the power supply.



201-21380-01



NETGEAR INT LTD
Building 3 University Technology Centre
Curraheen Road Cork Ireland

NETGEAR, Inc.
350 East Plumeria Drive
San Jose, CA 95134, USA

© NETGEAR, Inc., NETGEAR and the NETGEAR Logo
are trademarks of NETGEAR, Inc. Any non-NETGEAR
trademarks are used for reference purposes only.

March 2017