

24 ports =
gigabit power to spare



24 Port

10/100/1000 Mbps Gigabit Switch

GS524T

NETGEAR's GS524T 10/100/1000 Mbps Gigabit Switch gives your office network a megaboost of speed and capacity. Its 24 ports can blast 2000 Mbps per port of data throughput in full-duplex mode. Ideal for combining 10, 100, and 1000 Mbps devices, this unmanaged, rack-mountable switch features 10/100/1000 automatic speed and full/half-duplex sensing plus Auto Uplink™ on every port. Users can take advantage of the GS524T's ability to deliver large amounts of multimedia, image, and video information in no time at all. Use it as a robust and reliable network backbone for your 50- to 250-employee company.

HIGH-CAPACITY

Plenty of bandwidth for all users, with 24 switched 10/100/1000 ports for PCs, servers, or switches.

ALERT

Each port is equipped with automatic speed and duplex sensing, plus Auto Uplink™ to adjust for straight-through or crossover cables and make the right link.

HIGH-PERFORMANCE

Shoots data across your network at speeds of up to 2000 Mbps per port.

UNCOMPLICATED

Easy to set up and easy to use, this unmanaged switch features integrated LEDs on every port for effortless network monitoring.



Help is there when you need it!

NETGEAR provides free, 24x7

telephone and e-mail technical

support in English, with selected

local language support during

office hours.

www.NETGEAR.com

NETGEAR®

NETGEAR Inc.

4500 Great America Parkway
 Santa Clara, CA 95054
 USA

Phone: 1-888-NETGEAR
 E-mail: support@NETGEAR.com
 www.NETGEAR.com

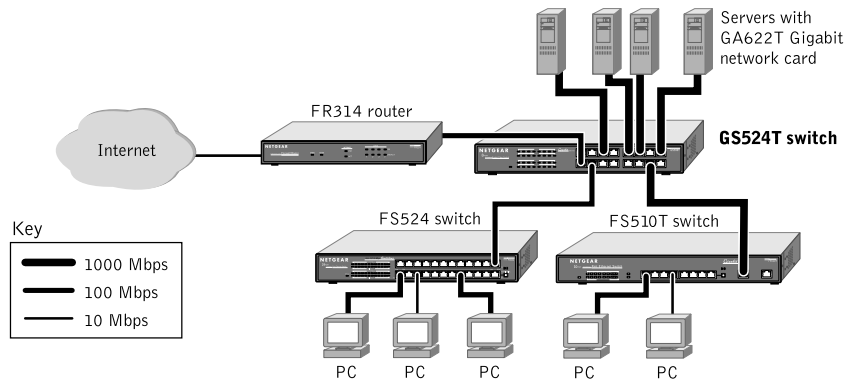
In-Country Phone Support

(24x7 phone support in English, local language support during office hours.)

Australia	1800-787-638	Korea	00308-11-0319
Austria	00800-06384327 (00800-0-NETGEAR)	Netherlands	0800-023-0981
Denmark	808-82179	New Zealand	00800-1233-4566
Canada	1-888-NETGEAR	Norway	800-12041
Finland	0800-111-036	Singapore	001-800-1233-4566
France	0800-77-17-53	Sweden	0200-298-298
Germany	00800-06384327 (00800-0-NETGEAR)	Switzerland	00800-0638-4327 (00800-0-NETGEAR)
Hong Kong	001-800-1233-4566	United Kingdom	020-7216-0014
Japan	0120-66-5402	United States	1-888-NETGEAR
		All Other Countries	+1 801-236-8499

NETGEAR® is a trademark of NETGEAR, Inc. Windows® is a registered trademark of Microsoft Corporation. Other brand and product names are trademarks or registered trademarks of their respective holders. Information is subject to change without notice. All rights reserved.

November 2001

**TECHNICAL SPECIFICATIONS****Network Ports**

10/100/1000 Mbps twisted-pair RJ-45 ports

Performance (64 byte packets)

Switching fabric: 20 gigabit per sec

Forward rate (1000 Mbps port):

1,480,000 packet per sec

Forward rate (100 Mbps port):

148,000 packet per sec

Forward rate (10 Mbps port):

14,800 packet per sec

Latency (1000 to 1000 Mbps): 30 µs max

MAC addresses: 32,000

Power Consumption

70 W maximum

Localized power cord for North America,
 Japan, UK, Europe, Australia

Standards Compliance

IEEE 802.3i 10BASE-T Ethernet

IEEE 802.3u 100BASE-TX Fast Ethernet

IEEE 802.3ab 1000BASE-T Gigabit Ethernet

IEEE 802.3x Flow Control

Status LEDs

Unit: power

Per network port: link, activity, full
 duplex/collision, speed

Dimensions

W 330 mm (13")

D 207 mm (8.2")

H 43 mm (1.7")

Weight

2.4 kg (5.3 lb)

Environmental Specifications

Operating temperature: 0 to 40°C

Operating humidity: 90% maximum relative
 humidity, noncondensing

Electromagnetic Compliance

CE mark, commercial

FCC Part 15 Class A

VCCI Class A

EN 55022 (CISPR 22), Class A, EN 50082-1,
 EN 55024

C-Tick

Safety Agency Approvals

UL listed (UL 1950)/cUL

IEC950/EN60950

TUV EN 60950

Warranty

Switch: 5 years

Power supply: 2 year

PACKAGE CONTENTS

Switch

Power cord

Rack-mount kit

User guide

Warranty card

Support information card



www.NETGEAR.com

NETGEAR®