

# Four copper Gigabit ports

for a faster and easier way to connect



## 100/1000 Mbps Copper Gigabit Switch

**GS504T**

Copper Gigabit ports in this Ethernet switch give you high-speed connectivity without the cost and hassle of fiber cables. Providing backbone for power workgroups, data centers, and server farms—with convenient Plug and Play installation—**NETGEAR**'s high-performance GS504T Copper Gigabit Switch delivers the power of Copper Gigabit Ethernet to optimize your small to medium-sized business network.

### **CAPABLE**

Four copper Gigabit ports provide high-performance backbone connectivity between workgroups, data centers, and server farms.

### **ACCESSIBLE**

Multiple 100 Mbps users can simultaneously access the backbone and servers without network congestion.

### **POWERFUL**

Delivers up to 5.9 million packets per second as it supports 8,000 users or devices on the network.

### **SAVVY**

Supports auto-negotiation so every port automatically senses the proper speed and operates at the optimum rate.

### **EASY-GOING**

Self-configuring and easy to install, it's compliant with all major network software and protocols.



Help is there when you need it!

NETGEAR provides free, 24x7

telephone and e-mail technical

support in English with selected

local language support during

office hours.

[www.NETGEAR.com](http://www.NETGEAR.com)

**NETGEAR™**

**NETGEAR** Inc.  
4500 Great America Parkway  
Santa Clara, CA 95054  
USA

Phone: 1-888-NETGEAR  
E-mail: support@NETGEAR.com  
www.NETGEAR.com

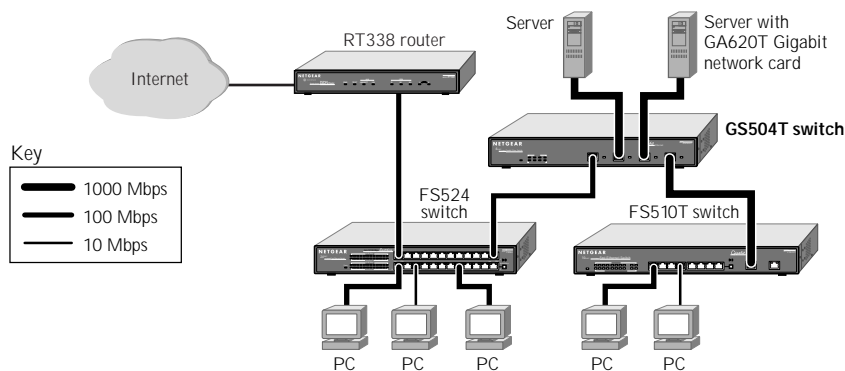
**In-Country Phone Support**

(24x7 phone support in English, local language support during office hours.)

Australia	1800-787-638	Korea	00308-11-0319
Austria	00800-06384327 (00800-0-NETGEAR)	Netherlands	0800-023-0981
Denmark	808-82179	New Zealand	00800-1233-4566
Canada	1-888-NETGEAR	Norway	800-12041
Finland	0800-111-036	Singapore	001-800-1233-4566
France	0800-77-17-53	Sweden	0200-298-298
Germany	00800-06384327 (00800-0-NETGEAR)	Switzerland	00800-0638-4327 (00800-0-NETGEAR)
Hong Kong	001-800-1233-4566	United Kingdom	020-7216-0014
Japan	0120-66-5402	United States	1-888-NETGEAR
		All Other Countries	+1 801-236-8499

NETGEAR™ is a trademark of NETGEAR, Inc. Windows® is a registered trademark of Microsoft Corporation. Other brand and product names are trademarks or registered trademarks of their respective holders. Information is subject to change without notice. All rights reserved.

October 2000



**TECHNICAL SPECIFICATIONS**

**Network Ports**

100/1000 Mbps twisted-pair RJ-45 ports

**Performance (64 byte packets)**

Switching fabric: 9.6 gigabit per sec

Forward rate (100 Mbps port):

148,000 packet per sec

Forward rate (1000 Mbps port):

1,480,000 packet per sec

Latency (100 to 1000 Mbps): 8 usec max

MAC addresses: 8,000

Gigabit buffer memory: 8 MB for 4 ports

**Power Consumption**

65 W maximum

Localized power cord for North America, Japan, UK, Europe, Australia

**Standards Compliance**

IEEE 802.3u 100BASE-TX Fast Ethernet

IEEE 802.3ab 1000BASE-T Gigabit Ethernet

**Status LEDs**

Unit: power

Per network port: link, activity, full duplex/collision

**Dimensions**

W 330 mm (13")

D 207 mm (8.2")

H 43 mm (1.7")

**Weight**

2.4 kg (5.3 lb)

**Environmental Specifications**

Operating temperature: 0 to 40°C

Operating humidity: 90% maximum relative humidity, noncondensing

**Electromagnetic Compliance**

CE mark, commercial

FCC Part 15 Class A

VCCI Class A

EN 55022 (CISPR 22), Class A, EN 50082-1

C-Tick

TUV EN 60950

**Safety Agency Approvals**

UL listed (UL 1950)/cUL

IEC950/EN60950

**Warranty**

Switch: 5 years

Power supply: 1 year

**PACKAGE CONTENTS**

Switch

Power cord

Rack-mount kit

User guide

Warranty card

Support phone card



www.NETGEAR.com

**NETGEAR™**