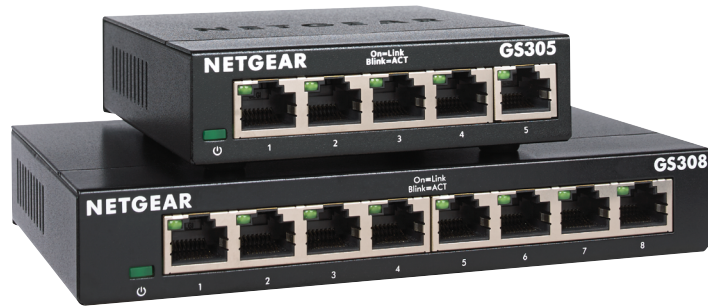


Installation Guide

5-Port and 8-Port Gigabit Ethernet Unmanaged Switch

Model GS305v3 and GS308v3



Package contents

- Switch
- Power adapter (varies by region)
- Installation guide

Ethernet cables are not included.

1. Register with the NETGEAR Insight app

Use the NETGEAR Insight App to register your switch, activate your warranty, and access support.

1. On your iOS or Android mobile device, visit the app store, search for NETGEAR Insight, and download the latest app.

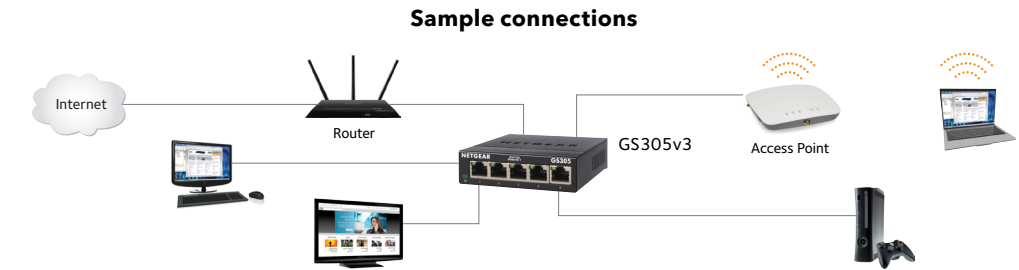


2. Open the NETGEAR Insight app.
3. If you did not set up a NETGEAR account, tap **Create NETGEAR Account** and follow the onscreen instructions.
4. Tap the menu in the upper left corner to open it.
5. Tap **REGISTER ANY NETGEAR DEVICE**.
6. Enter the serial number located on the bottom of the switch, or use the camera on your mobile device or tablet to scan the serial number bar code.
7. Tap **Go**.
8. Tap **View Device** to add the switch to a network.

The switch is registered and added to your account. You can now view your switch in the NETGEAR Insight app.

Note: Because this is an unmanaged switch, you cannot configure or manage it in NETGEAR Insight.

2. Connect the switch



3. Power on the switch

- For switch model GS308v3 only, move the **Off/On** switch to the **On** position.
- Connect the power adapter to the switch and plug it into an electrical outlet.

The LEDs indicate the status.

LED	Description
Power	<ul style="list-style-type: none">• On. The switch is receiving power.• Off. The switch is not receiving power.
Port	<ul style="list-style-type: none">• Solid green. The switch detected a link with a powered on device on this port.• Blinking green. The port is sending or receiving traffic.• Off. The switch does not detect a link on this port.

Support

Thank you for purchasing this NETGEAR product. You can visit <https://www.netgear.com/support/> to register your product, get help, access the latest downloads and user manuals, and join our community. We recommend that you use only official NETGEAR support resources.

Si ce produit est vendu au Canada, vous pouvez accéder à ce document en français canadien à <https://www.netgear.com/support/download/>.
(If this product is sold in Canada, you can access this document in Canadian French at <https://www.netgear.com/support/download/>.)

For regulatory compliance information including the EU Declaration of Conformity, visit <https://www.netgear.com/about/regulatory/>.

See the regulatory compliance document before connecting the power supply.

Do not use this device outdoors. If you connect cables or devices that are outdoors to this device, see <https://kb.netgear.com/000057103> for safety and warranty information.



201-24447-03

Aug 2019

© NETGEAR, Inc., NETGEAR and the NETGEAR Logo are trademarks of NETGEAR, Inc. Any non-NETGEAR trademarks are used for reference purposes only.

NETGEAR, Inc.
350 East Plumeria Drive
San Jose, CA 95134, USA



NETGEAR INTL LTD
Floor 1, Building 3, University
Technology Centre
Curraheen Road, Cork,
T12EF21, Ireland